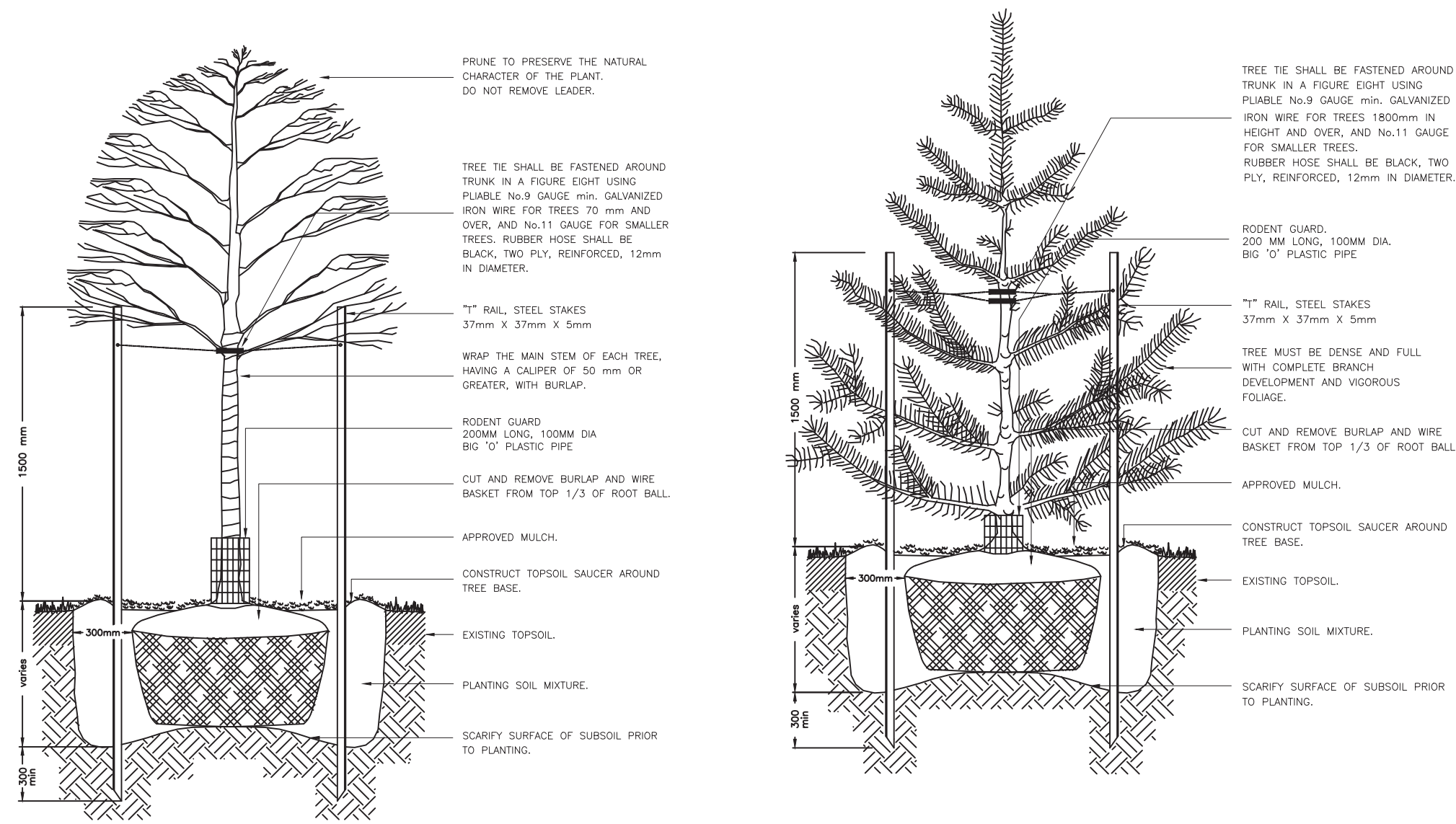


Key	Botanical Name	Common Name	Cal.	Ht.	Spr.	Cond.	Remarks	Total
ORNAMENTAL TREES								
Fsd	Fagus Sylvatica 'Dawcyk Green'	Dawcyk Green Beech	50mm			WB	Tree Form	3
CONIFEROUS TREES								
Pr	Pinus resinosa	Red Pine		175cm		WB	Uniform Specimen	2
Toe	Thuja occidentalis 'Emerald'	Emerald Cedar		175cm		WB	Uniform Specimen	10
LARGE DECIDUOUS SHRUBS								
ac	Amelanchier canadensis	Serviceberry		150cm		15 GAL	Multi-stem	1
CONIFEROUS/ EVERGREEN SHRUBS								
jhb	Juniperus horizontalis 'Blue Chip'	Blue Chip Juniper		40cm		3 GAL	Uniform Specimen	8
tmh	Taxus x media 'Hicksii'	Hick's Yew		80cm		5 GAL	Uniform Specimen	12

PLANT LIST - LOT A

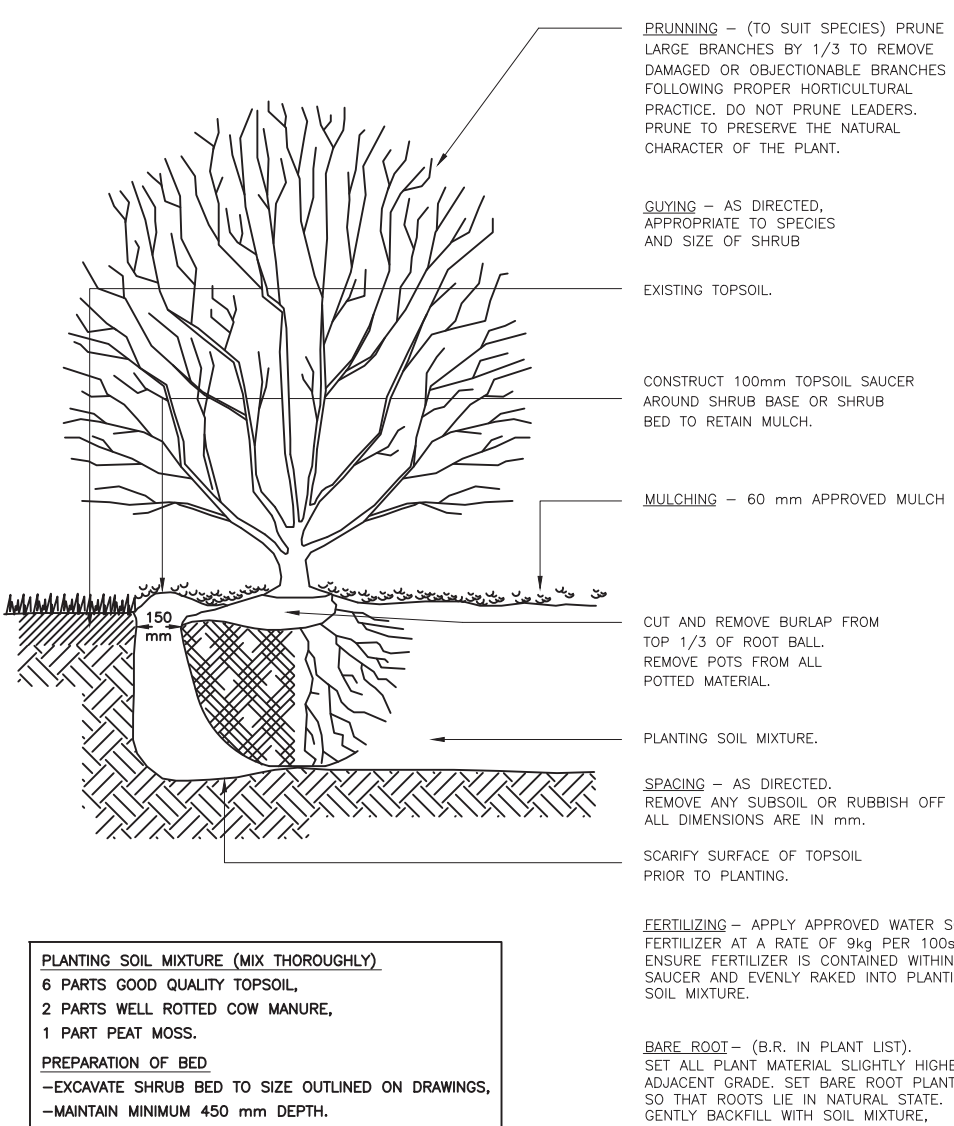


NOTES:
 - TREES UNDER 70mm REQUIRE TWO STAKES, TREES 70mm CAULIPER AND OVER REQUIRE THREE STAKES.
 - SET TREE 50mm HIGHER THAN SURROUNDING GRADE TO ALLOW FOR SETTLEMENT.
 - THE ABOVE DETAIL DOES NOT REPRESENT ANY PARTICULAR SPECIES.

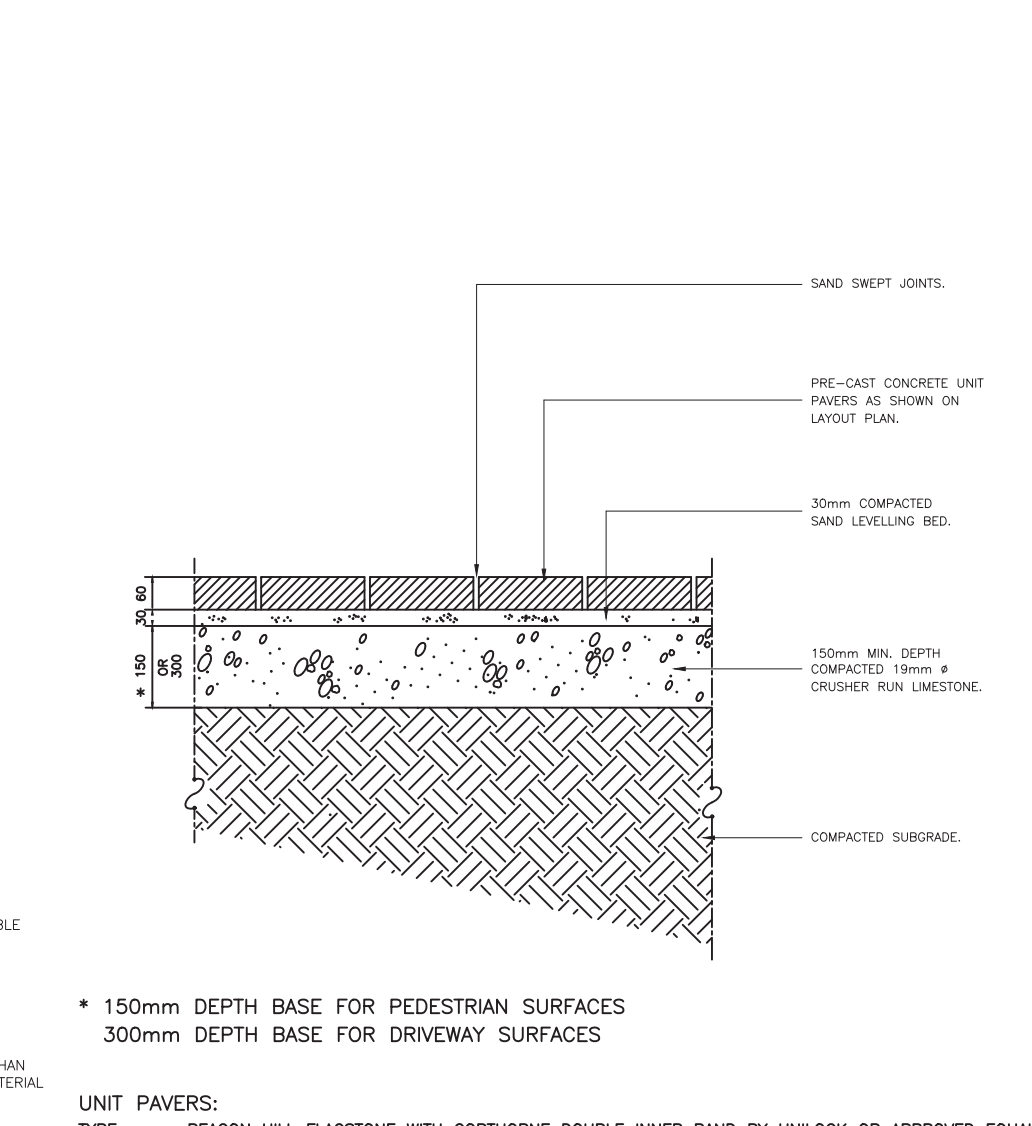
NOTES:
 - TREES UNDER 1800mm REQUIRE TWO STAKES, TREES OVER 1800mm REQUIRE THREE STAKES.
 - SET TREE 50mm HIGHER THAN SURROUNDING GRADE TO ALLOW FOR SETTLEMENT.
 - THE ABOVE DETAIL DOES NOT REPRESENT ANY PARTICULAR SPECIES.

DECIDUOUS TREE PLANTING DETAIL NO. 1

CONIFEROUS TREE PLANTING DETAIL NO. 2



NOTES:
 - PLANTING METHOD ILLUSTRATED, SHALL APPLY EQUALLY TO BARE ROOT STOCK AND BALLED STOCK.
 - SET SHRUBS 50 mm HIGHER THAN SURROUNDING GRADE TO ALLOW FOR SETTLEMENT.
 - SHRUBS PLANTED IN GROUPS SHALL BE SET IN CONTINUOUS BEDS.
 - THE ABOVE DETAIL DOES NOT REPRESENT ANY PARTICULAR SPECIES.

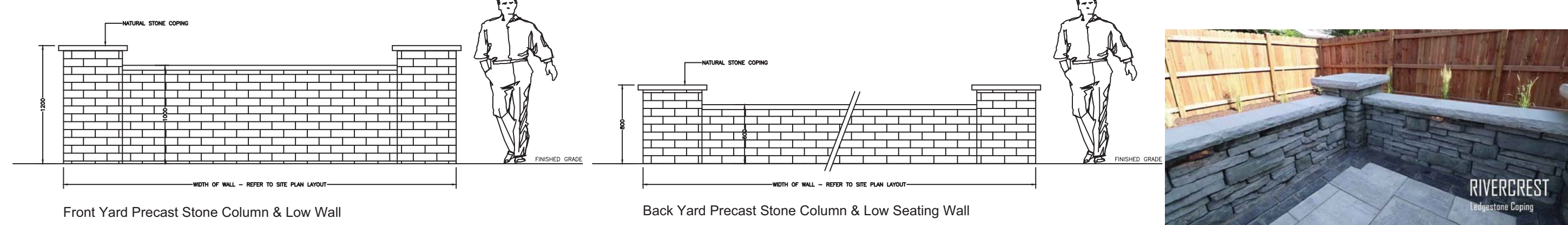


NOTES:
 - SUBGRADE AND GRANULAR COMPACTION TO CONFORM WITH OPSS FORM 501.
 - PRECAST CONCRETE UNIT PAVERS TO BE UNLOCK PRODUCT OR APPROVED EQUAL.
 - CRUSHER RUN LIMESTONE TO CONFORM WITH OPSS FORM 1010 GRADATION FOR GRANULAR 'A'.

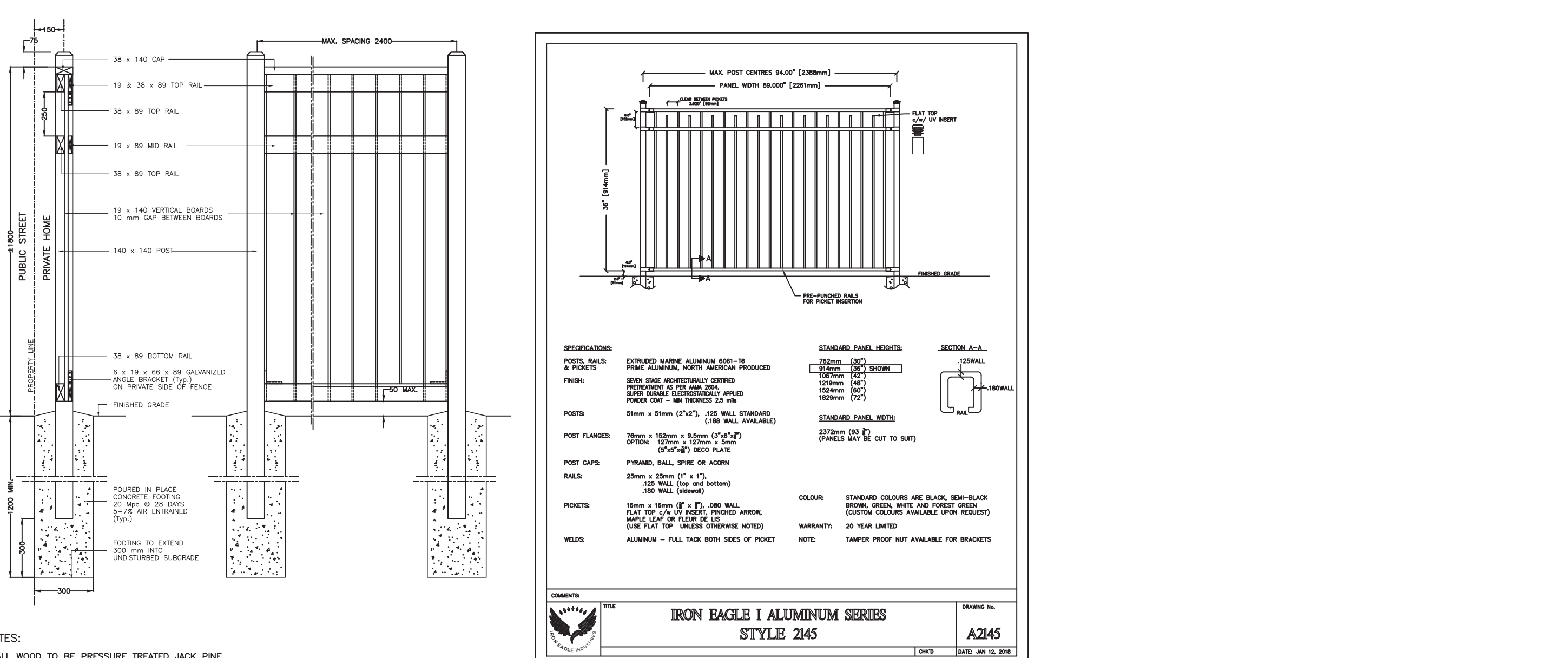
SHRUB PLANTING DETAIL NO. 3

INTERLOCKING STONE PAVERS DETAIL NO. 4

LANDSCAPE SITE PLAN

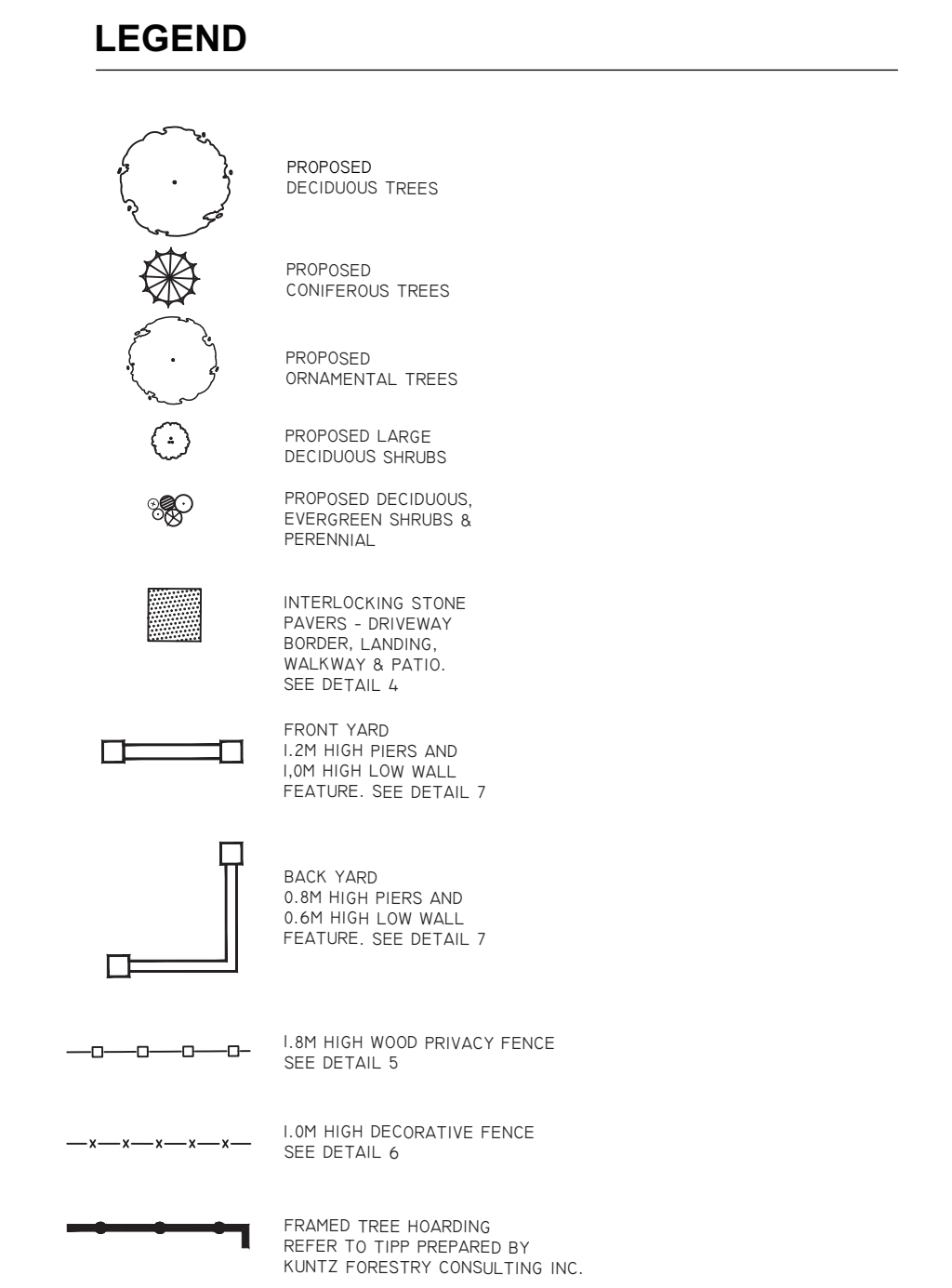
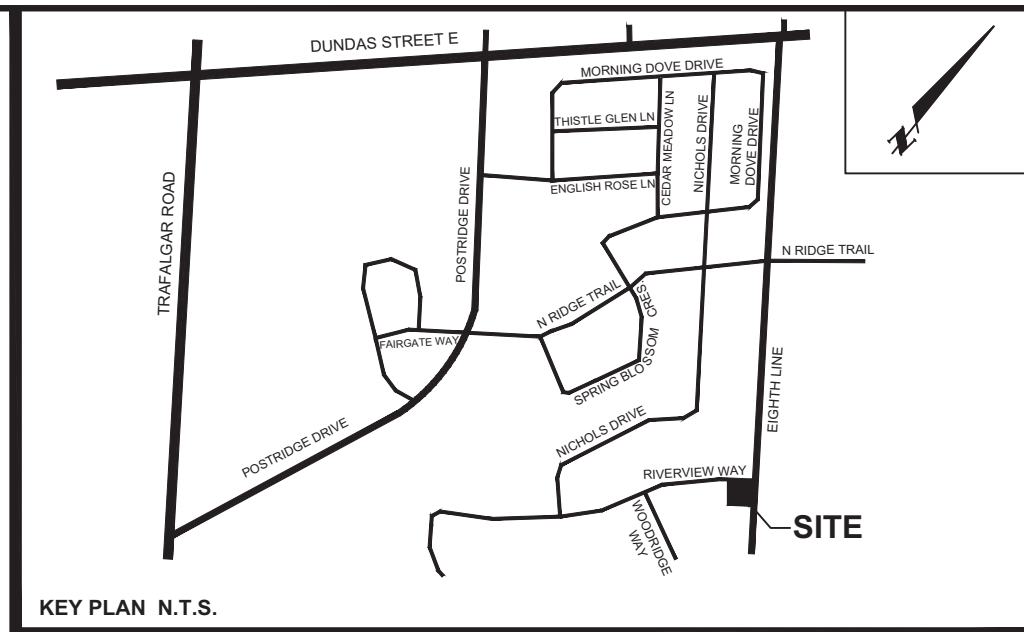
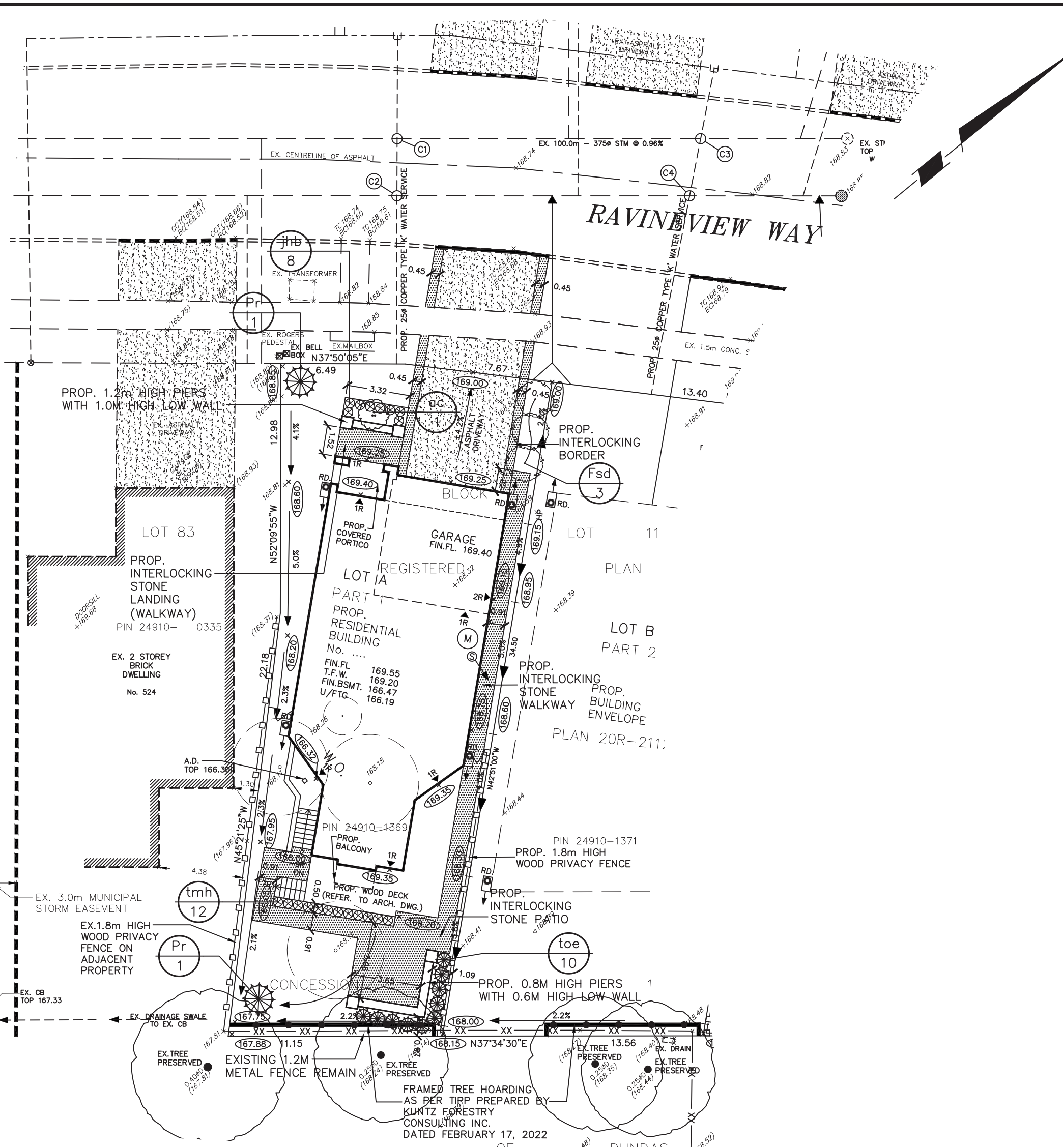


FRONT & BACK YARD PIERS & WALLS DETAIL NO. 7



1.8M HT. WOOD PRIVACY FENCE DETAIL NO. 5

1.0M HT. DECORATIVE METAL FENCE DETAIL NO. 6



NOTE:
 FOR ADDITIONAL INFORMATION, DETAILS, DIMENSIONS AND CONFORMITY TO THE SITE PLAN, THE CONTRACTOR MUST REFER TO THE ARCHITECTURAL SITE PLAN PREPARED BY: VERUS DESIGN
 FOR GRADING INFORMATION, SERVICING & UTILITIES, THE CONTRACTOR MUST REFER TO GRADING PLAN PREPARED BY: SKIRA ASSOCIATES LTD.

No.	DATE	REVISION	INIT.
2	MAR. 10/22	FIRST SUBMISSION TO TOWN	P.H.
1	FEB. 28/22	ISSUED TO ARCH & BORISAT FOR REVIEW	P.H.

TODESIGN landscape designer
 34 Sequoia Drive, Markham, Ontario L6C 3J1
 416 993 1968

PROPOSED RESIDENTIAL BUILDINGS
 PART OF BLOCK 116, REGISTERED PLAN 20M-706, AND PART OF LOT 11,
 CONSESSION 1, SOUTH OF DUNDAS STREET

2358 EIGHTH LINE

MEADOWRIDGE DEVELOPERS INC.
 13182 BRITANNIA ROAD, MILTON, ONTARIO L5E 0V5 TEL: (647) 533-8780

TOWN OF OAKVILLE

LANDSCAPE PLAN FOR LOT A

REGION FILE: **LP-01**

DATE: FEBRUARY 2022 AREA: OAKVILLE
 SCALE: 1:200 DRAWN BY: P.H.