

PLANT LIST (MASTER)

DECIDUOUS TREES
 KEY QTY. BOTANICAL NAME COMMON NAME CAL. HT. SPREAD ROOTS REMARKS
 (mm) (cm) (cm)

KEY	QTY.	BOTANICAL NAME	COMMON NAME	CAL. (mm)	HT. (cm)	SPREAD (cm)	ROOTS (cm)	REMARKS
GTS	2	Gleditsia triacanthos "Shademaster"	Shademaster Honeylocust	60	-	-	WB	-
AFJ	3	Acer x freemanii "Jeffersred"	Autumn Blaze Maple	60	-	-	WB	-
SRI	3	Syringa reticulata "Ivory Silk"	Ivory Silk Tree Lilac	60	-	-	WB	-
TCR	2	Tilia cordata "Greenspire"	Greenspire Linden	60	-	-	WB	-

DECIDUOUS SHRUBS
 KEY QTY. BOTANICAL NAME COMMON NAME CAL. HT. SPREAD ROOTS REMARKS
 (mm) (cm) (cm)

Rr	27	Rosa rugosa	Rugosa Rose	-	-	-	3 gal. pot	-
----	----	-------------	-------------	---	---	---	------------	---

REFER TO ARBORIST REPORT
 FOR TREE PROTECTION FENCE
 DETAIL AND TREE PROTECTION
 ZONES

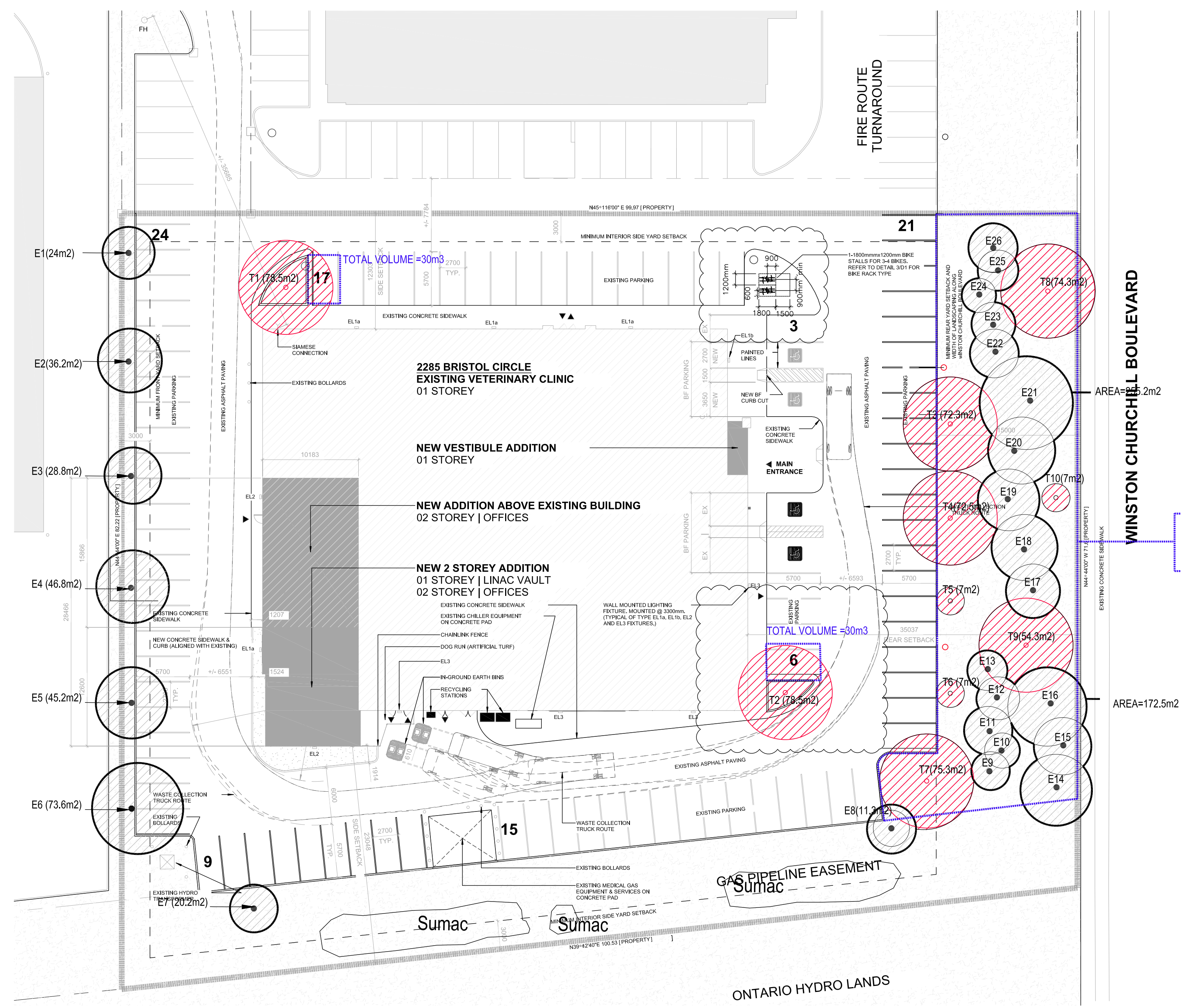
6				
5				
4				
3				
2	Re-issued as per cpmments	23/03/15	MR	
1	Issued for Site Plan submission	22/09/28	HP	
DESIGNED BY / CONSULTANT	M RUHLAND	CHECKED BY / DESIGNER	M RUHLAND	
DRAWN BY / DESIGNER	H P			

ARCHITECT	CONSULTANT
CONSULTANT	CONSULTANT

PROJECT / LOCATION
**VCA/MOVEH
 RENOVATION AND
 ADDITION**
 2285 BRISTOL CIRCLE
 OAKVILLE, ON

DRAWING
LANDSCAPE PLAN

DATE	SEPT. 2022	SHEET NO.	L-1
PROJECT NO.	22-1695		



TOTAL SOIL AREA=990m2
 AT 0.9M DEPTH = TOTAL VOLUME OF 891m3
 TOTAL VOLUME PER TREE (26 TREES)=34.27m3

Proposed Canopy on Site

Tree#	Species	Stature (S/M/L)	Soil volume per Tree (m3)	Canopy Area Sub-total (m2)
T1	Acer x freemanii 'Jeffersred'	M	30	78.5
T2	Acer x freemanii 'Jeffersred'	M	30	78.5
T3	Tilia cordata 'Greenspire'	M	34.27	72.3
T4	Tilia cordata 'Greenspire'	M	34.27	72.5
T5	Syringa reticulata 'Ivory silk'	S	34.27	7
T6	Syringa reticulata 'Ivory silk'	S	34.27	7
T7	Acer x freemanii 'Jeffersred'	M	34.27	75.3
T8	Gleditsia triacanthos 'Shademaster'	M	34.27	74.3
T9	Gleditsia triacanthos 'Shademaster'	M	34.27	54.3
T10	Syringa reticulata 'Ivory silk'	S	34.27	7

Subtotal of proposed canopy 526.7m2

Existing Canopy Canopy on Site

Tree#	Species	Stature	Soil volume per Tree (m3)	Canopy Area (m2)
E1	Gleditsia triacanthos 'Shademaster'	M	30	24
E2	Gleditsia triacanthos 'Shademaster'	M	30	36.2
E3	Gleditsia triacanthos 'Shademaster'	M	30	28.8
E4	Gleditsia triacanthos 'Shademaster'	M	30	46.8
E5	Gleditsia triacanthos 'Shademaster'	M	30	45.2
E6	Gleditsia triacanthos 'Shademaster'	M	30	73.6
E7	Acer platanoides	M	34.27	20.3
E8	Acer platanoides	M	34.27	11.3
E9	Picea glauca	S	34.27	
E10	Picea pungens	S	34.27	
E11	Picea pungens	S	34.27	
E12	Picea pungens	S	34.27	
E13	Picea pungens	S	34.27	
E14	Acer platanoides	M	34.27	
E15	Acer platanoides	M	34.27	
E16	Acer platanoides	M	34.27	
E17	Gleditsia triacanthos 'Shademaster'	M	34.27	
E18	Gleditsia triacanthos 'Shademaster'	M	34.27	
E19	Gleditsia triacanthos 'Shademaster'	M	34.27	
E20	Gleditsia triacanthos 'Shademaster'	M	34.27	
E21	Gleditsia triacanthos 'Shademaster'	M	34.27	
E22	Picea glauca	S	34.27	
E23	Picea glauca	S	34.27	
E24	Picea pungens	S	34.27	
E25	Picea pungens	S	34.27	
E26	Picea pungens	S	34.27	

Subtotal of existing canopy 714m2
 Multiplied by 1.5 1071m2

Total # of trees	Total Canopy Area (m2)
36	1597.7

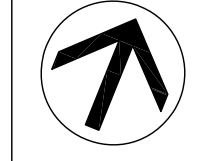
CANOPY SUMMARY

Total Site Area	7,281m2
Site Canopy Cover	21.94%
Canopy Cover Target by Land Use	20%



6			
5			
4			
3			
2	Re-Issued as per cpmnts	23/03/15	MR
1	Issued for Site Plan submission	22/09/28	HP

SCALE: FOR SITE 1:300



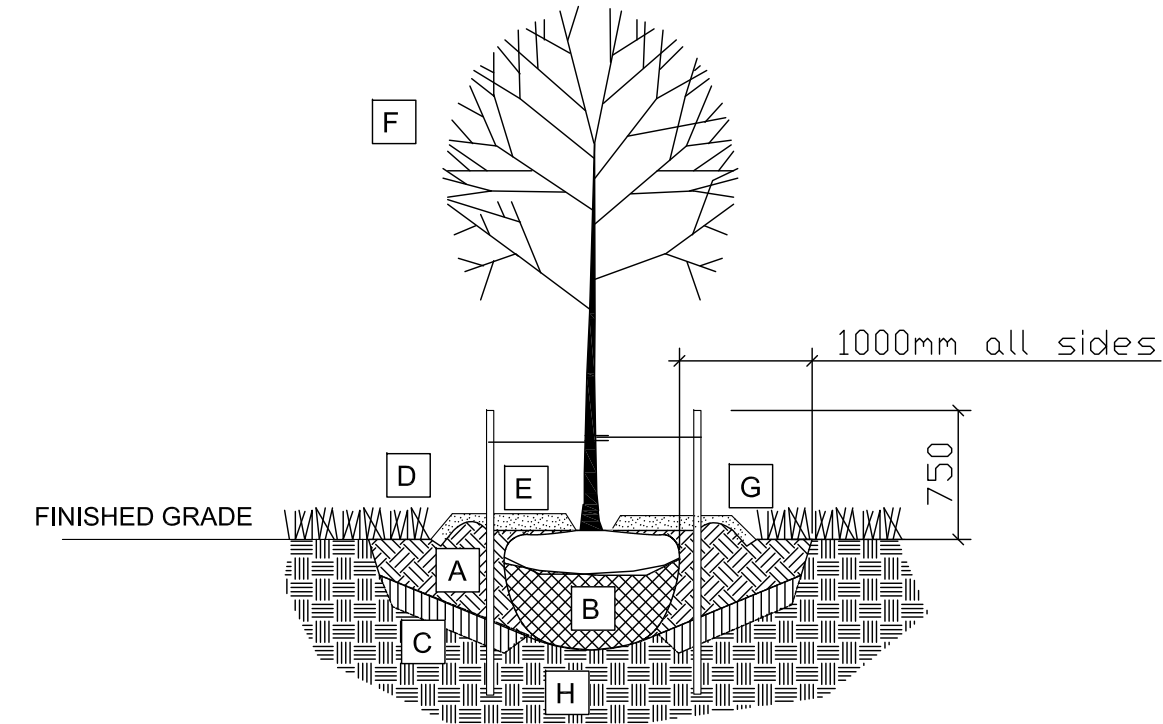
ARCHITECT	CONSULTANT
CONSULTANT	CONSULTANT

PROJECT / LOCATION
 VCA / MOVEH
 RENOVATION AND
 ADDITION
 2285 BRISTOL CIRCLE
 OAKVILLE, ON

CANOPY COVER PLAN

DATE	SEPT. 2022	SHEET NO.	L-2
PROJECT NO.	22-1695		

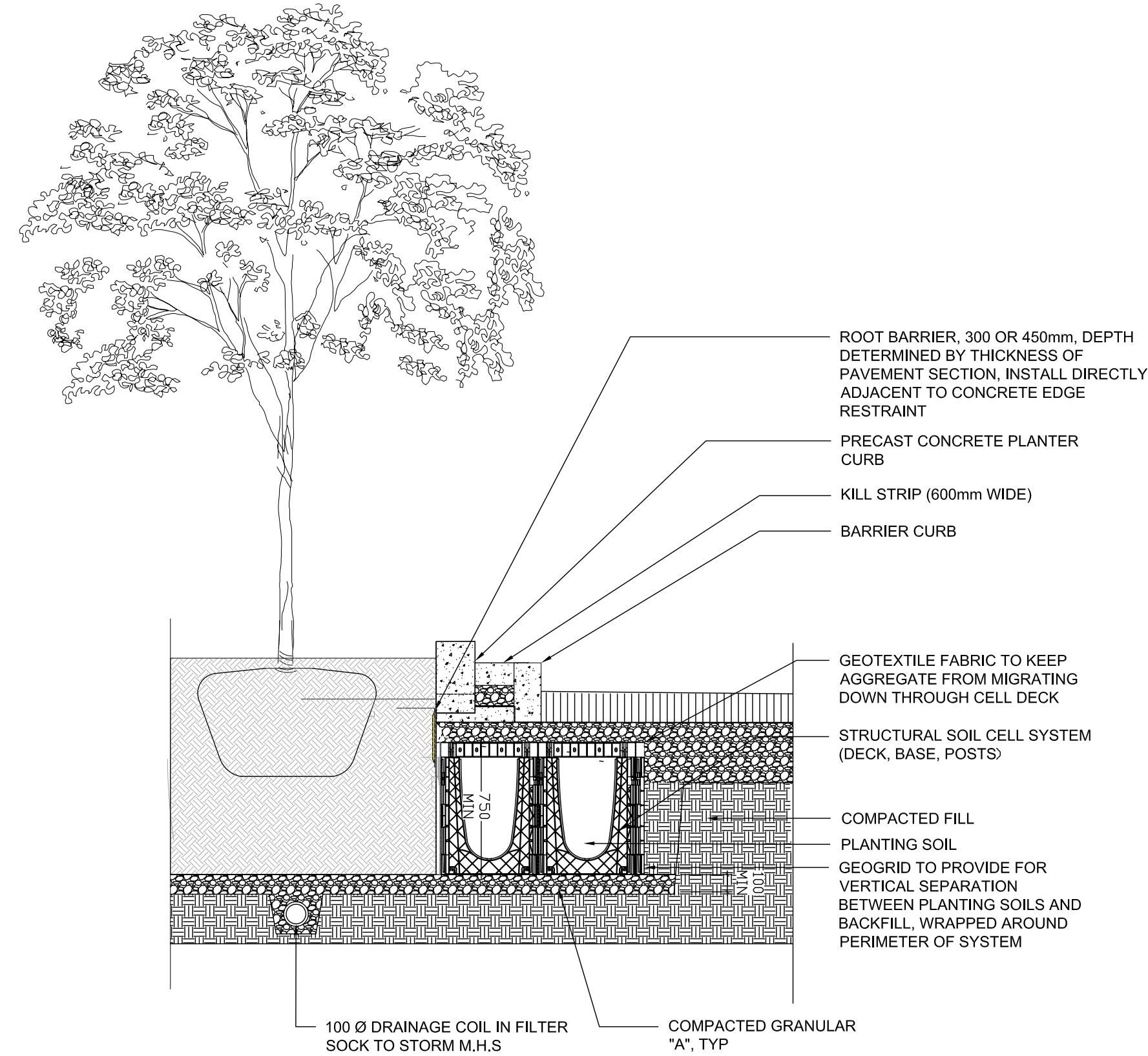
- A COMPACTED PLANTING MEDIUM
- B ROOTBALL, TOP OF ROOT CROWN TO BE FLUSH WITH PLANTING SOIL AND 50mm ABOVE SOIL OUTSIDE PLANTING PIT
- C LOOSEN PIT BOTTOM TO DEPTH OF 200mm (EXCEPT IMMEDIATELY BENEATH ROOT BALL), IF BASE OF PIT IS OVER EXCAVATED RAISE TO PROPER LEVEL WITH COMPACTED TOPSOIL
- D EDGE TO DEPTH OF 100mm
- E 50-75 mm MULCH LAYER, KEEP MULCH AWAY FROM STEMS
- F PRUNE DAMAGE, DISEASED OR WEAK BRANCHES AS PER ACCEPTED HORTICULTURAL PRACTICE, DO NOT DAMAGE OR REMOVE LEADER
- G PROVIDE 150 mm DEEP SAUCER AT TREES
- H APPROVED SUBGRADE (NATIVE OR IMPORTED)



TREE PLANTING:

- 1 CUT AND REMOVE TOP 1/3 OF BURLAP AND WIRE BASKET FROM ROOTBALL.
- 2 PLACE 2-METAL POSTS (40 x 40 x 2100 mm) AT OUTSIDE OF ROOTBALL AND FASTEN TO TRUNK WITH APPROVED TREE TIES.
- 3 WATER THOROUGHLY SUBSEQUENT TO PLANTING.
- 4 WRAP TREE TRUNK AFTER INSPECTION OF TREES BY LANDSCAPE ARCHITECT.
- 5 PROTECT TREE FROM RODENT DAMAGE.
- 6 REMOVE TREE RINGS, STAKES AND TRUNK WRAPPING AFTER WARRANTY PERIOD.

1 B&B/WIRE BASKET DECIDUOUS TREE PLANTING SCALE: NTS



2 STRUCTURAL SOIL CELLS SCALE: NTS

200 SERIES

MBR-0200-00005
Legacy # MBR200-S

Sustainability Facts	
Unit Size	One (1) 200 Bike Rack
Min. VAC	
Carbon Footprint (GWP)	118 147 Kg CO2-Eq
<small>(Measured in kilograms of carbon dioxide equivalent)</small>	
Total energy use (TPE)	1900 2470 MJ-Eq
<small>(Measured in megajoules of energy equivalent)</small>	
Water use (WCP)	1.27 1.82 m3 water
<small>(Measured in cubic metres of water)</small>	
Material recyclability	100%

LEED v4 Credits

Type II Environmental Product Declaration	Yes/No
Material Inventory	Yes
Low VOC finishes	Yes
Free of Red List substances	Yes

Copyright © 2022 Maglin Site Furniture
All rights reserved. No part of this publication may be reproduced or transmitted in any form or by any means, electronic or mechanical, including photocopying, recording, or by any information storage and retrieval system, without permission in writing from Maglin Site Furniture.

DESCRIPTION: 200 Series - 200 Bike Rack: H.S. Steel Tube, Aluminum Top Casting, Surface Mount, 2 Bike Configuration

FINISH: All steel components are protected with E-Coat Rust Proofing. The Maglin Powdercoat System provides a durable finish on all metal surfaces.

INSTALLATION: The bike rack is delivered pre-assembled.

TO SPECIFY: Select MBE-0200-00005
Choose:
- Powdercoat Color

HEIGHT: 35.94" (91.3cm) DIAMETER: 16.63" (42.2cm) WEIGHT: 18.45lb (8.37kg)

MAGLIN Site Furniture
7 650 718 8806
877 380 8133
www.maglin.com
sales@maglin.com

All drawings, specifications, design and details on this page are the property of Maglin Site Furniture Inc. and may not be used without Maglin authorization.
* Details and specifications may vary due to continuing improvements of our products.

3 SURFACE MOUNTED BIKE RACK (BY MAGLIN OR APPROVED EQUAL) SCALE: NTS



6				
5				
4				
3				
2	Re-issued as per cpmnts	23/03/15	MR	
1	Issued for Site Plan submission	22/09/28	HP	

DESIGNED BY / CONSULTANT	CHECKED BY / DESIGNED PAR
M RUHLAND	M RUHLAND
DRAWN BY / DESIGNED PAR	
H P	

SCALE: FOR FILE: 1:300

ARCHITECT	CONSULTANT
CONSULTANT	CONSULTANT

PROJECT / LOCATION
**VCA/MOVEH
RENOVATION AND
ADDITION**

2285 BRISTOL CIRCLE
OAKVILLE, ON

DRAWING

DETAILS

DATE SEPT. 2022	SHEET NO. D-1
PROJECT NO. 22-1695	