

**LEGEND:**

- STUDY AREA
  - EXISTING CONTOUR
  - CORE AREA
  - PROVINCIALLY SIGNIFICANT WETLAND (PSW)
  - LINKAGE PRESERVE AREA
  - NON PARTICIPATING LANDOWNERS (FUTURE DEVELOPMENT)
  - MAJOR SYSTEM DRAINAGE BOUNDARY
  - OVERLAND FLOW ROUTE
  - STORM SEWER, MANHOLE AND FLOW DIRECTION
  - CLEAN WATER SEWER, MANHOLE AND FLOW DIRECTION
  - STORM HIH ID
  - PROPOSED GROUND ELEVATION
  - PROPOSED SEWER INVERTS
- |                  |   |
|------------------|---|
| <b>100YR-1</b>   | MAJOR SYSTEM CAPTURE LOCATION ID  |
| <b>2.17ha</b>    | MAJOR SYSTEM CAPTURE AREA (ha)  |
| <b>0.75</b>      | RUNOFF COEFFICIENT x AREA (ha)  |
| <b>1.640cms</b>  | CONSTANT FLOW (m <sup>3</sup> /s) CAPTURED IN PIPE AT LOW POINT (Q100-Q5) |
| <b>10.83 min</b> | TIME OF CONCENTRATION (min)   |

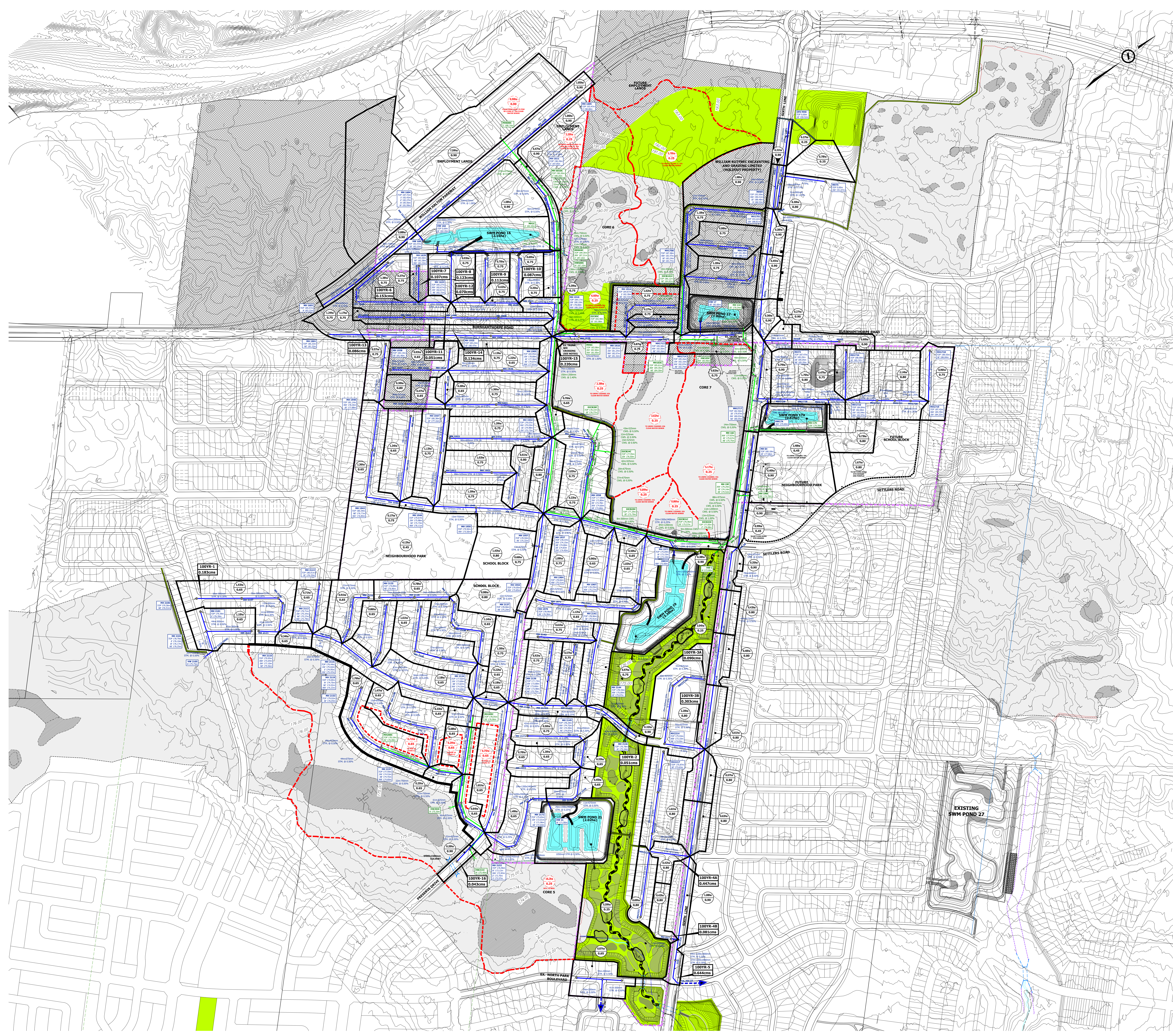


**ENVIRONMENTAL IMPLEMENTATION REPORT AND FUNCTIONAL SERVICING STUDY ADDENDUM UPPER WEST MORRISON CREEK UWM1 NORTH OAKVILLE**

**DRAWING 8.5B  
MAJOR SYSTEM STORM DRAINAGE PLAN**

File: P:\Projects\17-528-ESS\DWG\KORSIAK\KORSIAK\Drawings and Figures\8 - GRADING DRAINAGE AND STORMWATER MANAGEMENT\DRAWING 8.5B\_Major System Storm Drainage Plan.dwg - Revised by: GPK/... - Rev. 11/12/2020 - 01/11/20





**LEGEND:**

- STUDY AREA
- EXISTING CONTOUR
- CORE AREA
- PROVINCIAL SIGNIFICANT WETLAND (PSW)
- LINEAGE PRESERVE AREA
- NON PARTICIPATING LANDOWNERS (FUTURE DEVELOPMENT)
- CLEAN WATER SEWER DRAINAGE BOUNDARY
- MINOR SYSTEM STORM DRAINAGE AREA BOUNDARY
- CLEAN WATER SEWER DRAINAGE AREA (ha)  
0.29ha  
0.65 RUNOFF COEFFICIENT
- MINOR SYSTEM STORM DRAINAGE AREA (ha)  
2.50ha  
0.65 RUNOFF COEFFICIENT
- STORM SEWER, MANHOLE AND FLOW DIRECTION
- CLEAN WATER SEWER, MANHOLE AND FLOW DIRECTION
- STORM MH ID  
PROPOSED GROUND ELEVATION  
PROPOSED SEWER INVERTS
- CLEAN WATER MH ID  
PROPOSED GROUND ELEVATION  
PROPOSED SEWER INVERTS
- MAJOR SYSTEM CAPTURE LOCATION ID (REFER TO DRAWING 8.5B)  
100YR-1  
1.640cms  
CONSTANT FLOW (m³/s) CAPTURED IN PIPE AT LOW POINT (Q100-Q5)

**BURNHAMTHORPE ROAD EXISTING TRUNK WATERMAIN NOTES:**

- THE PROPOSED 1200mm STORM SEWER WILL CROSS BENEATH THE EXISTING 1200mm TRUNK WATERMAIN AT THE INTERSECTION OF PRESERVE DRIVE AND BURNHAMTHORPE ROAD WITH 0.5m VERTICAL CLEARANCE AT THE ELEVATIONS SHOWN ON THIS PLAN. AT THE SAME INTERSECTION, THE 1200mm CLEAN WATER SEWER WILL CROSS OVER THE EXISTING WATERMAIN WITH 0.5m CLEARANCE AT THE ELEVATIONS SHOWN ON THIS PLAN.
- THE CLEAN WATER SEWER/OUTFALL FROM POND 17 WILL CROSS BENEATH THE EXISTING 1200mm TRUNK WATERMAIN WITH 1m CLEARANCE AT THE ELEVATIONS SHOWN ON THIS PLAN.

**BURNHAMTHORPE ROAD CULVERT NOTES:**

- PRE-DEVELOPMENT DRAINAGE TO CORE 7 FROM THE HOLDOUT PROPERTY NORTH OF BURNHAMTHORPE ROAD IS MAINTAINED VIA THE EXISTING 450mm CULVERTS.
- SHOULD BURNHAMTHORPE ROAD URBANIZATION PROCEED IN ADVANCE OF THE DEVELOPMENT OF WILLIAM KUTYNECK EXCAVATING AND GRADING LTD. (HOLDOUT PROPERTY), THE EXISTING 450mm CULVERTS SHALL BE EXTENDED TO THE ULTIMATE RIGHT-OF-WAY LIMIT, WHICH WILL MAINTAIN PRE-DEVELOPMENT DRAINAGE TO CORE 7.
- WHEN KUTYNECK EXCAVATING AND GRADING LTD. (HOLDOUT PROPERTY) PROCEEDS WITH DEVELOPMENT, WETLAND WATER BALANCE TO BE RE-EVALUATED TO DETERMINE IF POST-DEVELOPMENT DRAINAGE TO CORE 7 FEATURES NEEDS TO BE MAINTAINED. IF REQUIRED, A SEPARATE CLEAN WATER SEWER DISCHARGING TO PSW 15 TO BE PROVIDED.

**HOLDOUT PROPERTY NOTES:**

- ECOLOGICAL ASSESSMENT OF WETLANDS LOCATED WITHIN HOLDOUT PROPERTIES WILL BE COMPLETED UPON RECEIPT OF CONSENT FROM PROPERTY OWNERS.
- POST-DEVELOPMENT DRAINAGE FROM HOLDOUT PROPERTIES TO BE RE-EVALUATED AT TIME OF FUTURE EIR/ISS SUBMISSIONS IN SUPPORT OF THOSE DEVELOPMENTS.
- GRADING, SERVICING AND DRAINAGE FOR HOLDOUT PROPERTIES IS SHOWN CONCEPTUALLY AND IS BASED ON CURRENTLY AVAILABLE LAND USE PLAN FOR NEIGHBOURHOODS 10 & 11 BY KORSAK URBAN PLANNING.

**ENVIRONMENTAL IMPLEMENTATION REPORT AND FUNCTIONAL SERVICING STUDY ADDENDUM UPPER WEST MORRISON CREEK UWM1 NORTH OAKVILLE**

**DRAWING 8.5A  
 MINOR SYSTEM STORM DRAINAGE PLAN**