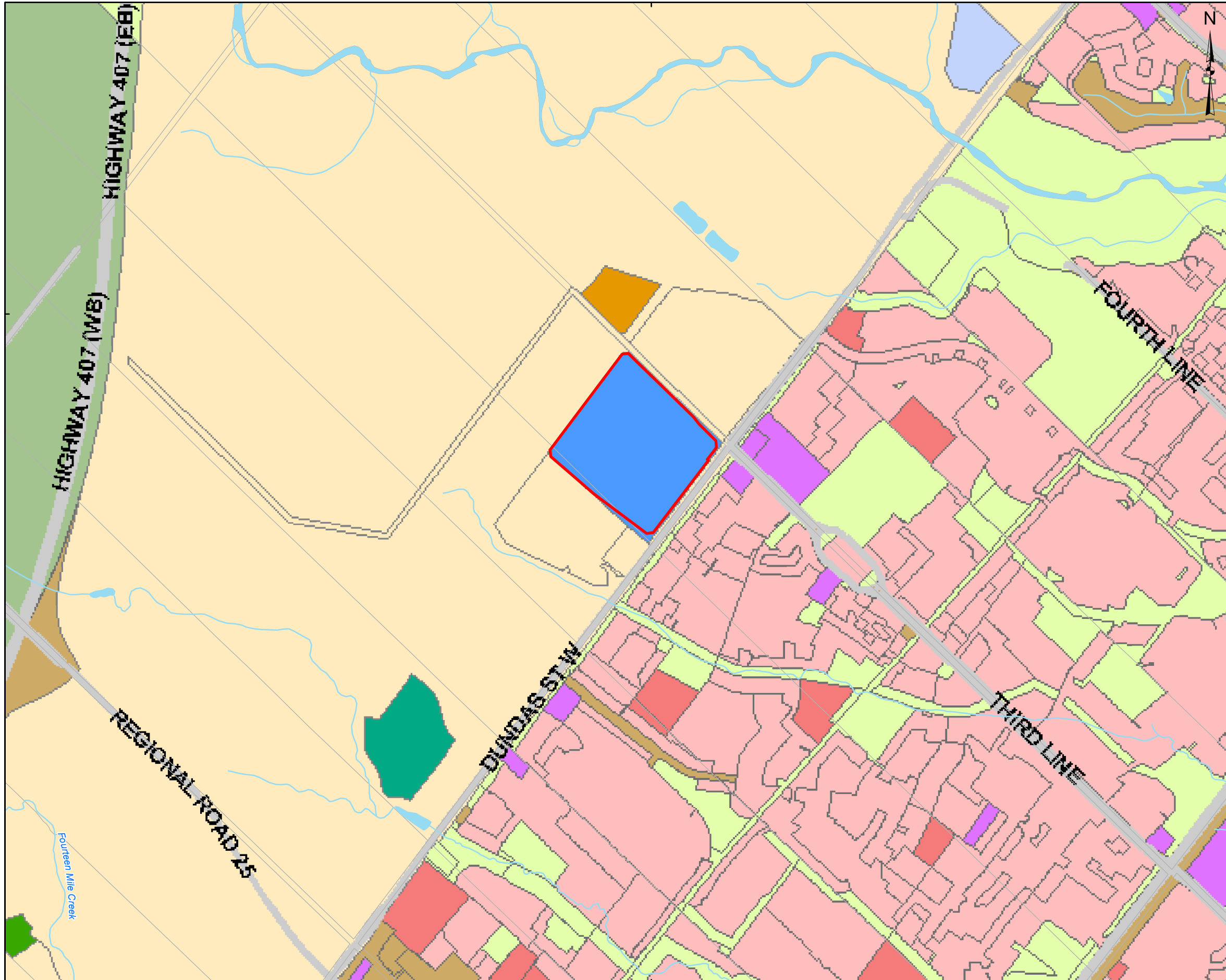


4812000

600000



HIGHWAY 407 (WB)

HIGHWAY 407 (EB)

DUNDAS ST W

FOURTH LINE

THIRD LINE

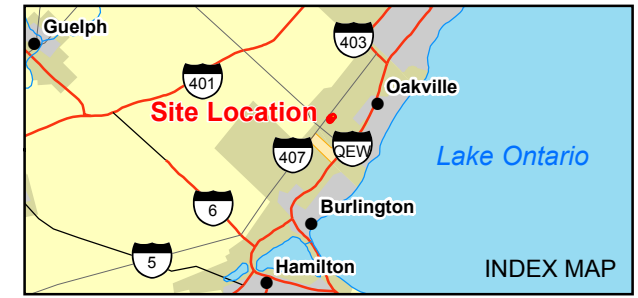
REGIONAL ROAD 25

Fourteen Mile Creek

600000

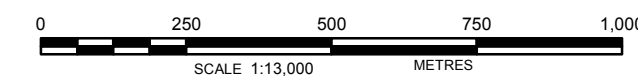
**LEGEND**

- Watercourse
- Waterbody
- Wetland
- Lot Fabric
- Property Boundary
- Zoning**
- Agricultural
- Commercial
- Community Park
- Existing Development
- Institutional
- Light Employment
- Open Space
- Public Use
- Park Belt
- Residential



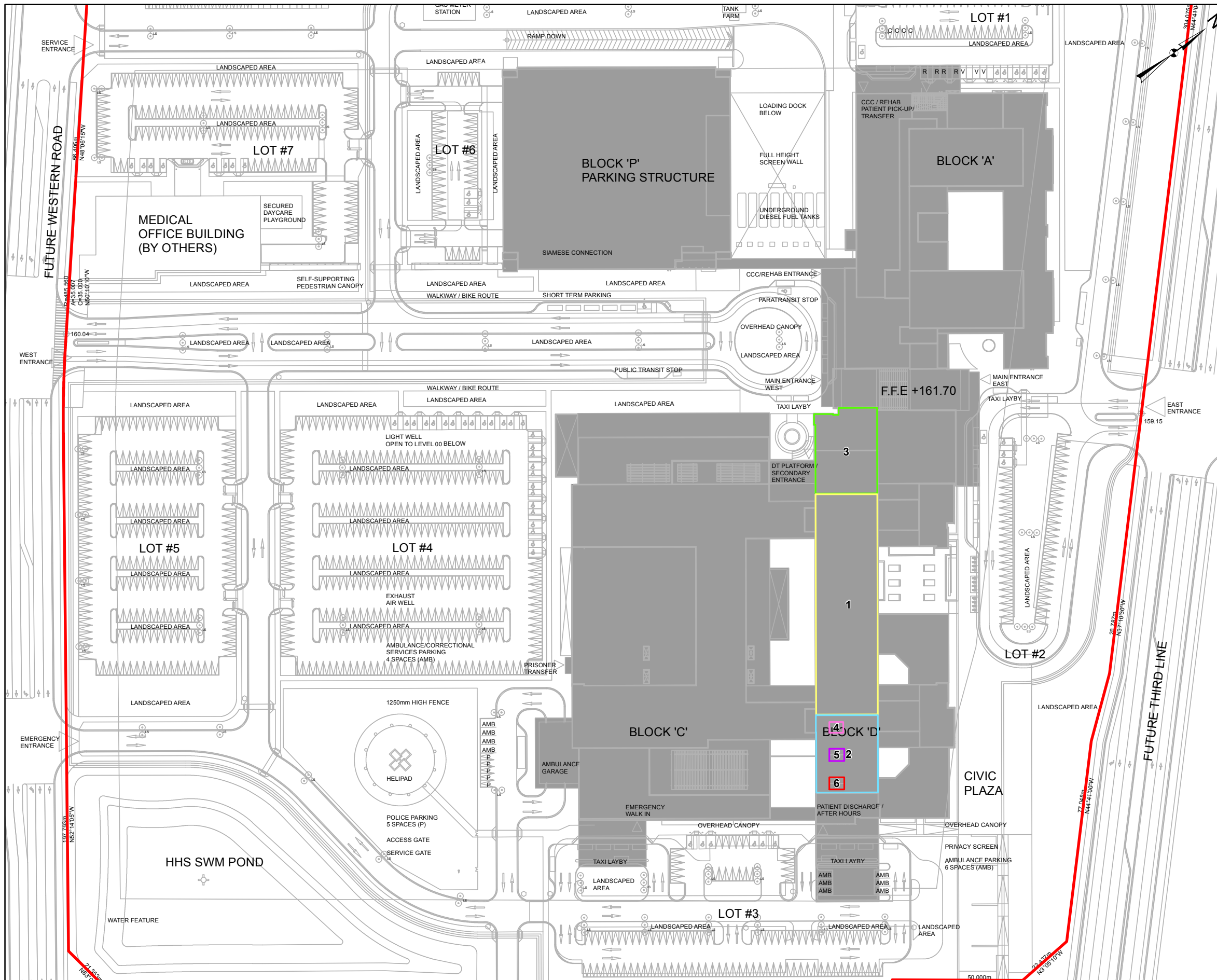
**REFERENCE**

Base Data - MNR LIO, obtained 2009  
 Produced by Golder Associates Ltd under licence from  
 Ontario Ministry of Natural Resources, © Queens Printer 2012  
 Zoning Map - Obtained from City of Oakville Online Mapping tool.  
 Projection: Transverse Mercator Datum: NAD 83 Coordinate System: UTM Zone 17



PROJECT		OAKVILLE HOSPITAL HPAQB APPLICATION	
TITLE		ZONING	
 Golder Associates Mississauga, Ontario	PROJECT NO.	10-1151-0350	SCALE AS SHOWN
	DESIGN	JO 16 Jan. 2012	REV. 0.0
	GIS	JO 15 Mar. 2012	
	CHECK	KA 15 Mar. 2012	
	REVIEW	EKL 15 Mar. 2012	

**FIGURE: 3**



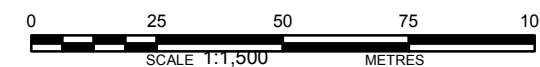
**LEGEND**

- Building 1 - 54.28m
- Building 2 - 45.1m
- Building 3 - 45.1m
- Building 4 - 54.28m
- Building 5 - 54.28m
- Building 6 - 54.28m
- Hospital
- Property Boundary

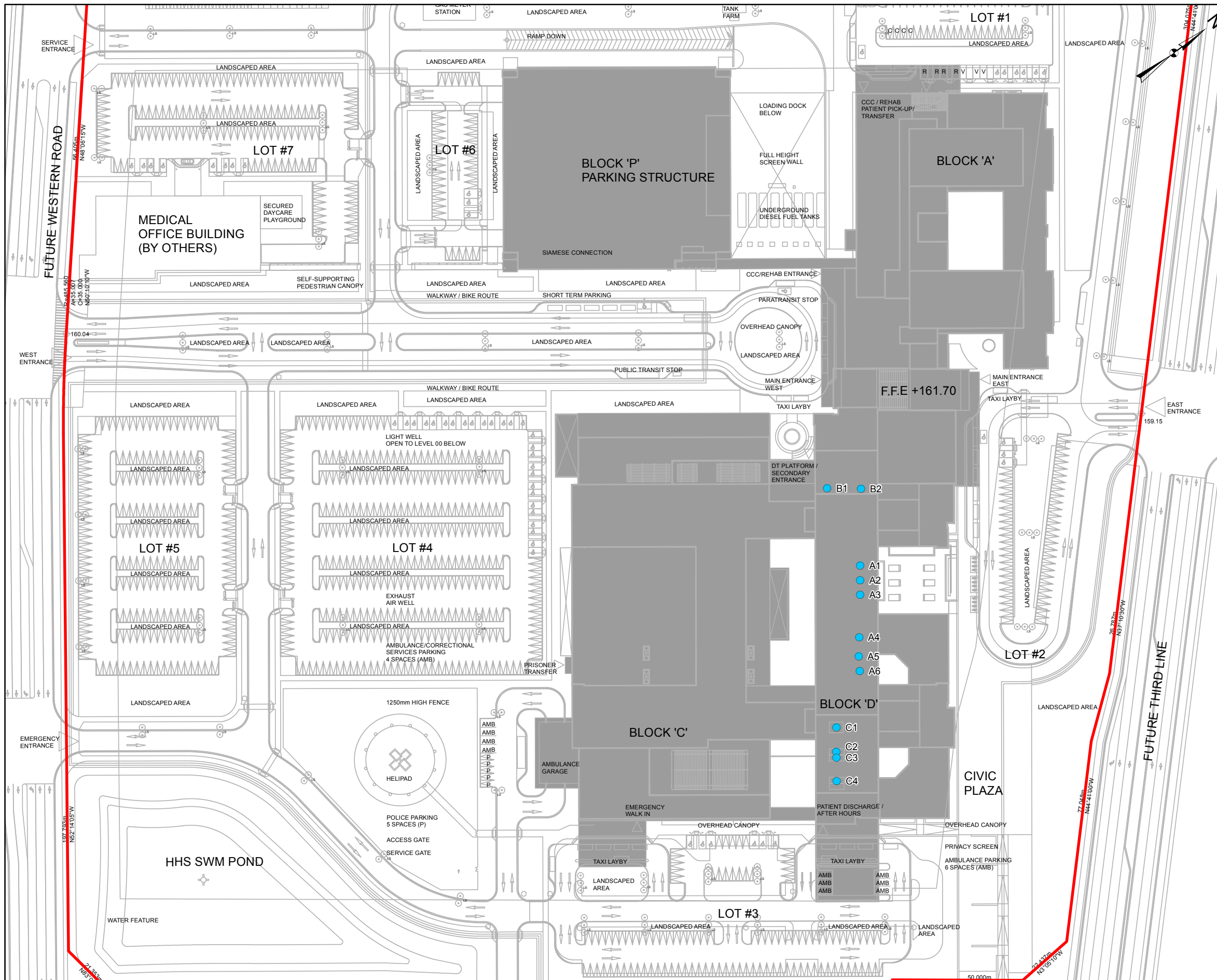


**REFERENCE**

Base Data - MNR LIO, obtained 2009  
 Produced by Golder Associates Ltd under licence from  
 Ontario Ministry of Natural Resources, © Queens Printer 2012  
 Site Details provided by client. Digital file name:  
 10-1151-0350 Ax1-001.dwg. Obtained 11/24/2011.  
 Projection: Transverse Mercator Datum: NAD 83 Coordinate System: UTM Zone 17

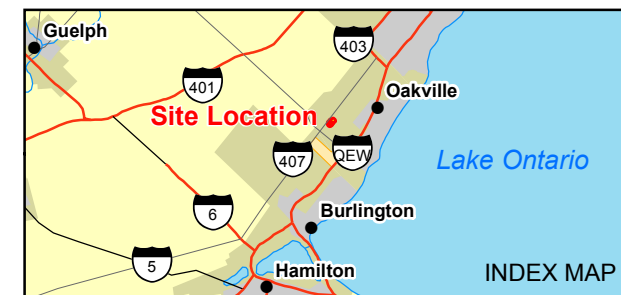


<b>PROJECT</b>	<b>OAKVILLE HOSPITAL HPAQB APPLICATION</b>		
<b>TITLE</b>	<b>BUILDING PLAN</b>		
 <b>Golder Associates</b> <small>Mississauga, Ontario</small>	PROJECT NO. 10-1151-0350	SCALE AS SHOWN	REV. 0.0
	DESIGN JO 16 Jan. 2012		
	GIS JO 15 Mar. 2012		
	CHECK KA 15 Mar. 2012		
REVIEW EKL 15 Mar. 2012			FIGURE: 4



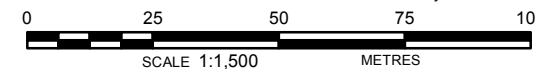
**LEGEND**


- Point Source
- Hospital
- Property Boundary

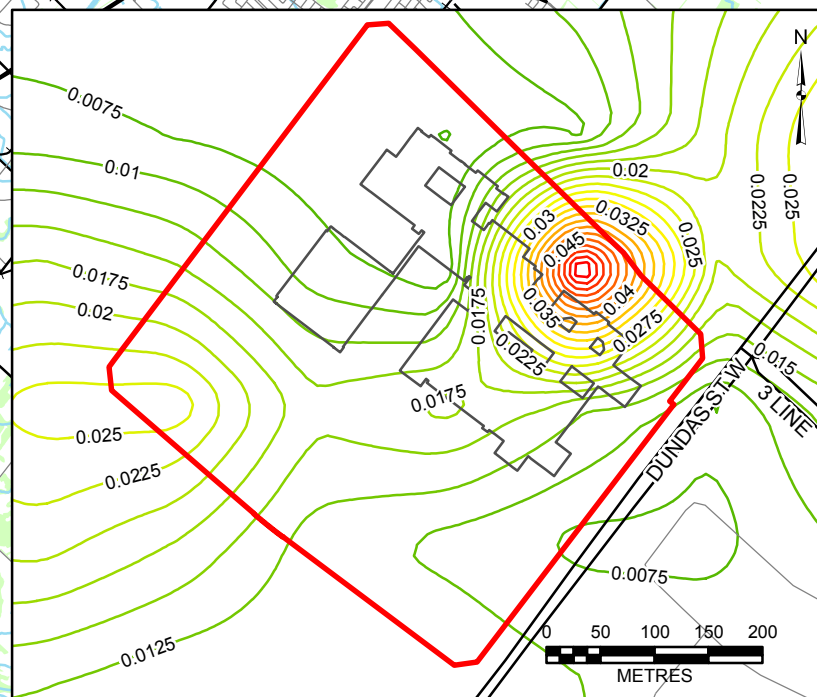
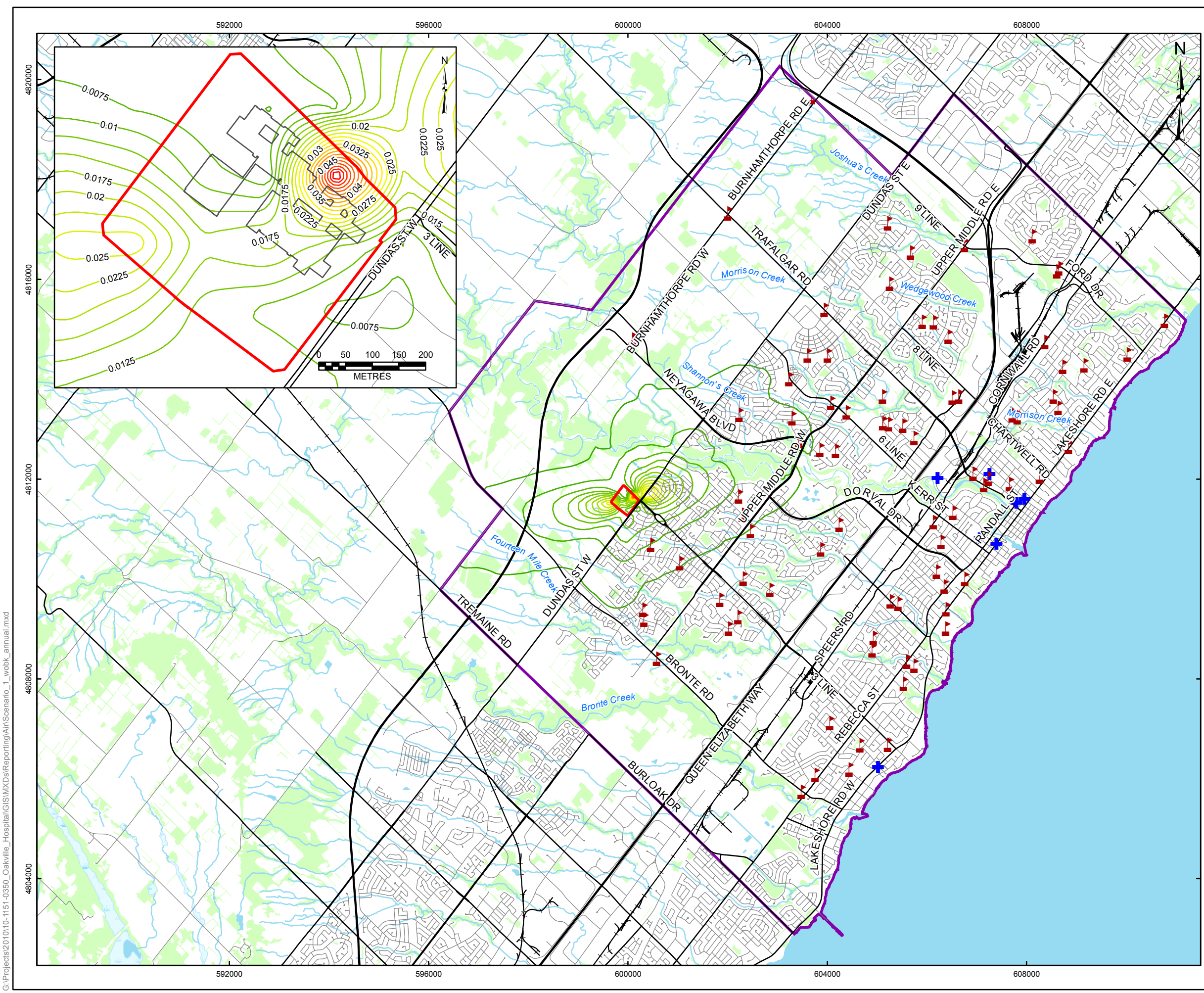


**REFERENCE**

Base Data - MNR LIO, obtained 2009  
 Produced by Golder Associates Ltd under licence from Ontario Ministry of Natural Resources, © Queens Printer 2012  
 Site Details provided by client. Digital file name: 10-1151-0350 Ax1-001.dwg. Obtained 11/24/2011.  
 Projection: Transverse Mercator Datum: NAD 83 Coordinate System: UTM Zone 17



PROJECT	OAKVILLE HOSPITAL HPAQB APPLICATION		
TITLE	DISPERSION MODELLING PLAN		
 Mississauga, Ontario	PROJECT NO.	10-1151-0350	SCALE AS SHOWN
	DESIGN	JO 16 Jan. 2012	REV. 0.0
	GIS	JO 25 Jul. 2012	<b>FIGURE: 5</b>
	CHECK	KA 25 Jul. 2012	
REVIEW	EKL 25 Jul. 2012		

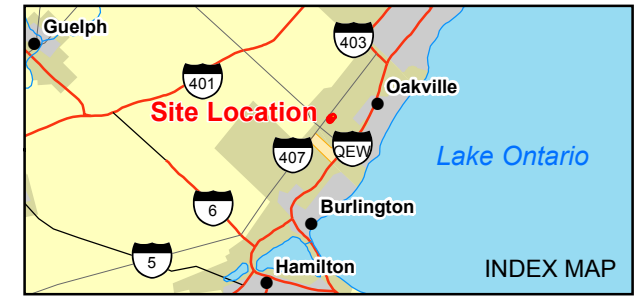


**LEGEND**

- Education
- Health Care
- Road
- Railways
- Watercourse
- Waterbody
- Wetland
- Wooded Area
- Property Boundary
- Town of Oakville

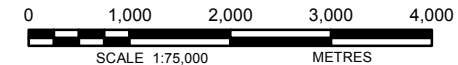
**Concentration (µg/m³)**

- 0.0025
- 0.005
- 0.0075
- 0.01
- 0.0125
- 0.015
- 0.0175
- 0.02
- 0.0225
- 0.025
- 0.0275
- 0.03
- 0.0325
- 0.035
- 0.0375
- 0.04
- 0.0425
- 0.045
- 0.0475
- 0.05
- 0.0525
- 0.055



**REFERENCE**

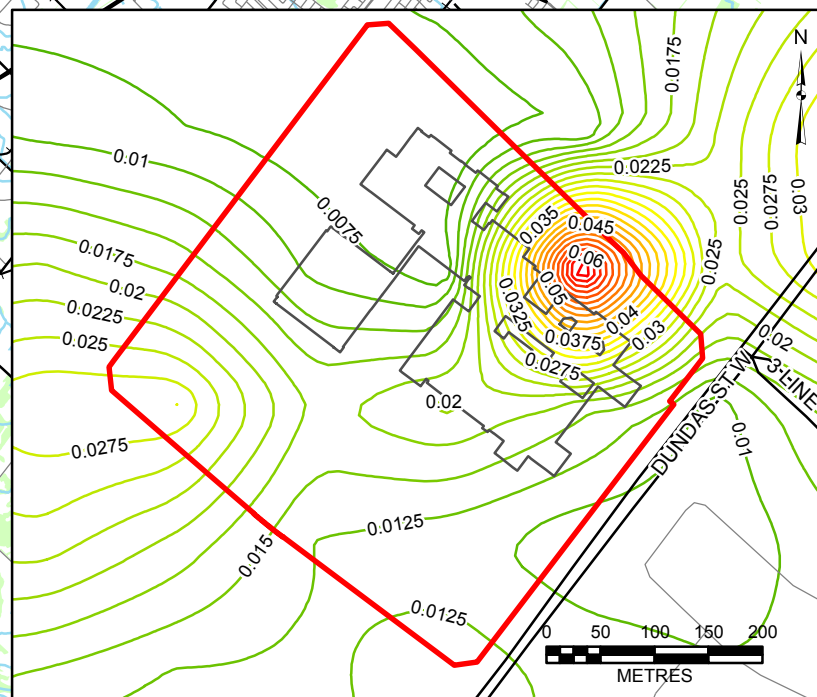
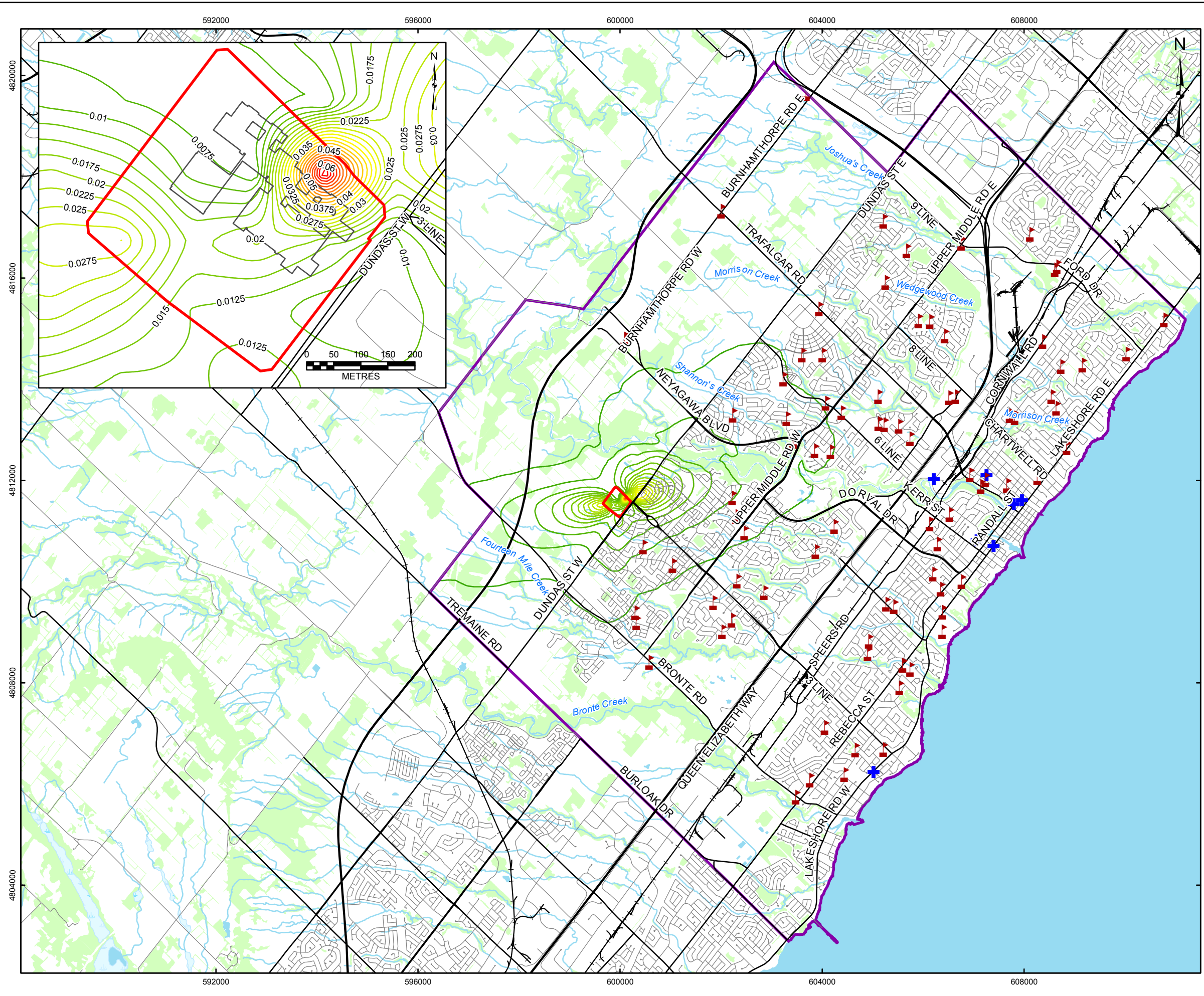
Base Data - MNR LIO, obtained 2009  
 Produced by Golder Associates Ltd under licence from  
 Ontario Ministry of Natural Resources, © Queens Printer 2012  
 Projection: Transverse Mercator Datum: NAD 83 Coordinate System: UTM Zone 17



PROJECT	OAKVILLE HOSPITAL HPAQB APPLICATION		
TITLE	FACILITY-INDUCED FPM CONTOUR MAP (AVERAGE)		
	PROJECT NO.	10-1151-0350	SCALE AS SHOWN
	DESIGN	JO 16 Jan. 2012	REV. 0.0
	GIS	JO 26 Jul. 2012	
	CHECK	JM 26 Jul. 2012	
	REVIEW	EKL 26 Jul. 2012	

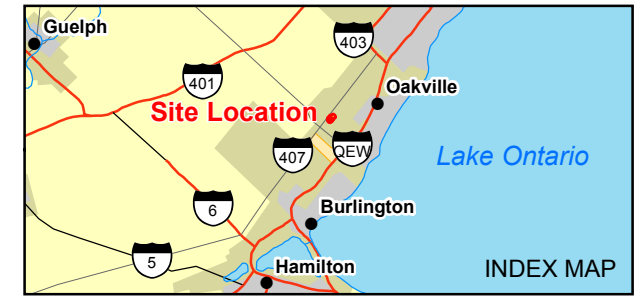
**FIGURE: 6**

G:\Projects\2010\10-1151-0350\_Oakville\_Hospital\GIS\MXDs\Reporting\Air\Scenario\_2\_wobk\_annual.mxd



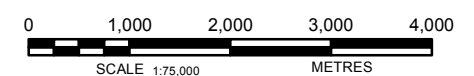
**LEGEND**

- Education
  - Health Care
  - Road
  - Railways
  - Watercourse
  - Waterbody
  - Wetland
  - Wooded Area
  - Property Boundary
  - Town of Oakville
- Concentration ( $\mu\text{g}/\text{m}^3$ )**
- 0.0025
  - 0.005
  - 0.0075
  - 0.01
  - 0.0125
  - 0.015
  - 0.0175
  - 0.02
  - 0.0225
  - 0.025
  - 0.0275
  - 0.03
  - 0.0325
  - 0.035
  - 0.0375
  - 0.04
  - 0.0425
  - 0.045
  - 0.0475
  - 0.05
  - 0.0525
  - 0.055
  - 0.0575
  - 0.06
  - 0.0625
  - 0.065



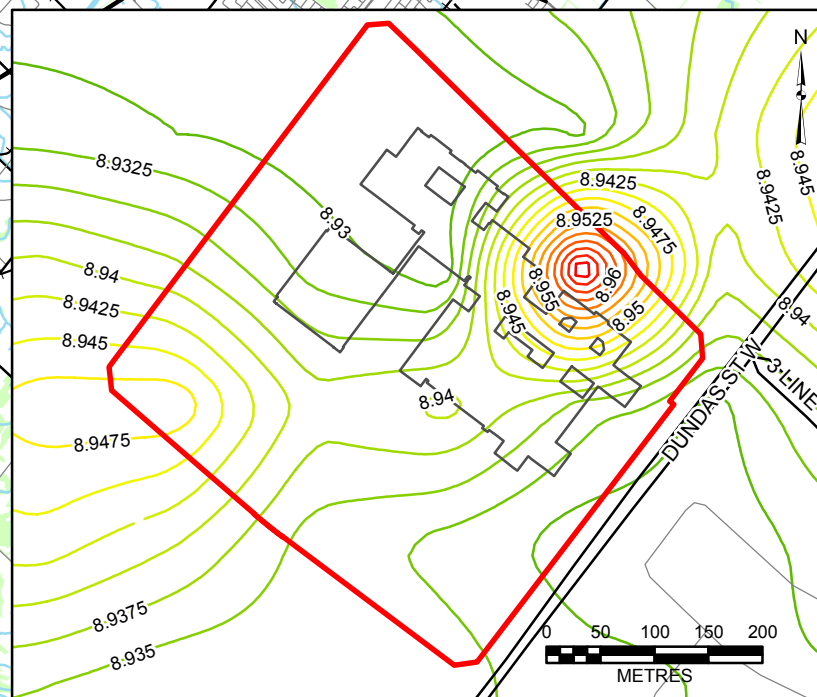
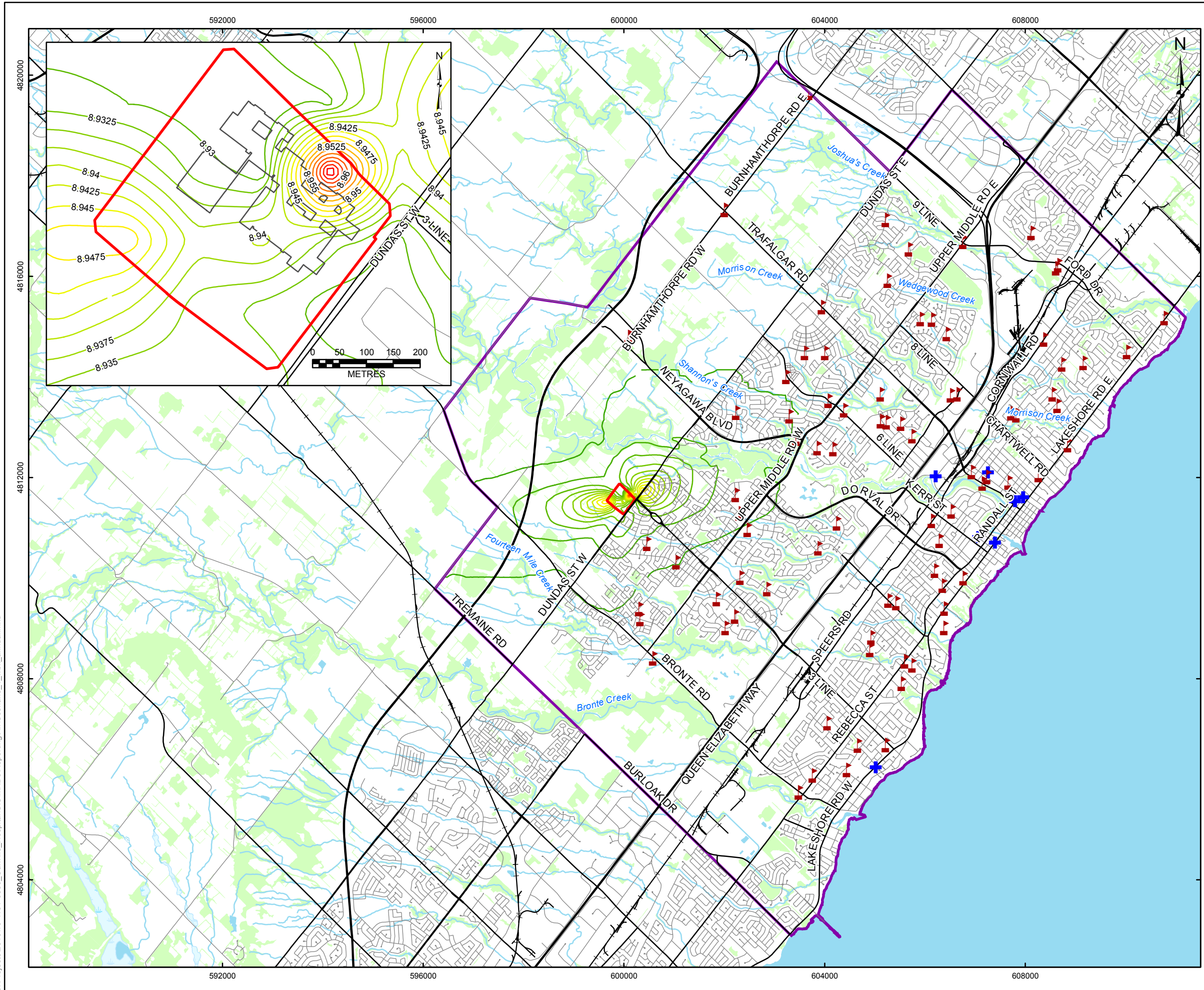
**REFERENCE**

Base Data - MNR LIO, obtained 2009  
 Produced by Golder Associates Ltd under licence from  
 Ontario Ministry of Natural Resources, © Queens Printer 2012  
 Projection: Transverse Mercator Datum: NAD 83 Coordinate System: UTM Zone 17



PROJECT	OAKVILLE HOSPITAL HPAQB APPLICATION		
TITLE	FACILITY-INDUCED FPM CONTOUR MAP (WORSE)		
Golder Associates Mississauga, Ontario	PROJECT NO.	10-1151-0350	SCALE AS SHOWN
	DESIGN	JO	16 Jan. 2012
	GIS	JO	26 Jul. 2012
	CHECK	JM	26 Jul. 2012
	REVIEW	EKL	26 Jul. 2012
			<b>FIGURE: 7</b>

G:\Projects\2010\10-1151-0350\_Oakville\_Hospital\GIS\MXDs\Reporting\Air\Scenario\_1\_wbk\_annual.mxd

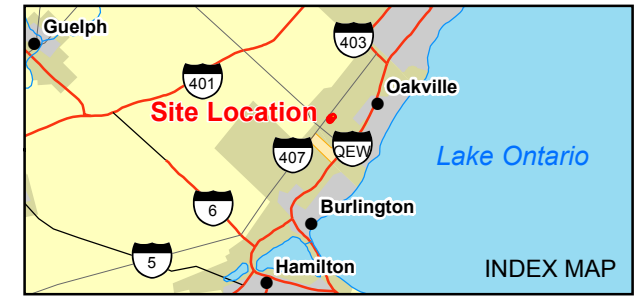


**LEGEND**

- Education
- Health Care
- Road
- Railways
- Watercourse
- Waterbody
- Wetland
- Wooded Area
- Property Boundary
- Town of Oakville

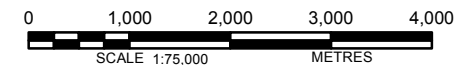
**Concentration (µg/m³)**

- 8.925
- 8.9275
- 8.93
- 8.9325
- 8.935
- 8.9375
- 8.94
- 8.9425
- 8.945
- 8.9475
- 8.95
- 8.9525
- 8.955
- 8.9575
- 8.96
- 8.9625
- 8.965
- 8.9675



**REFERENCE**

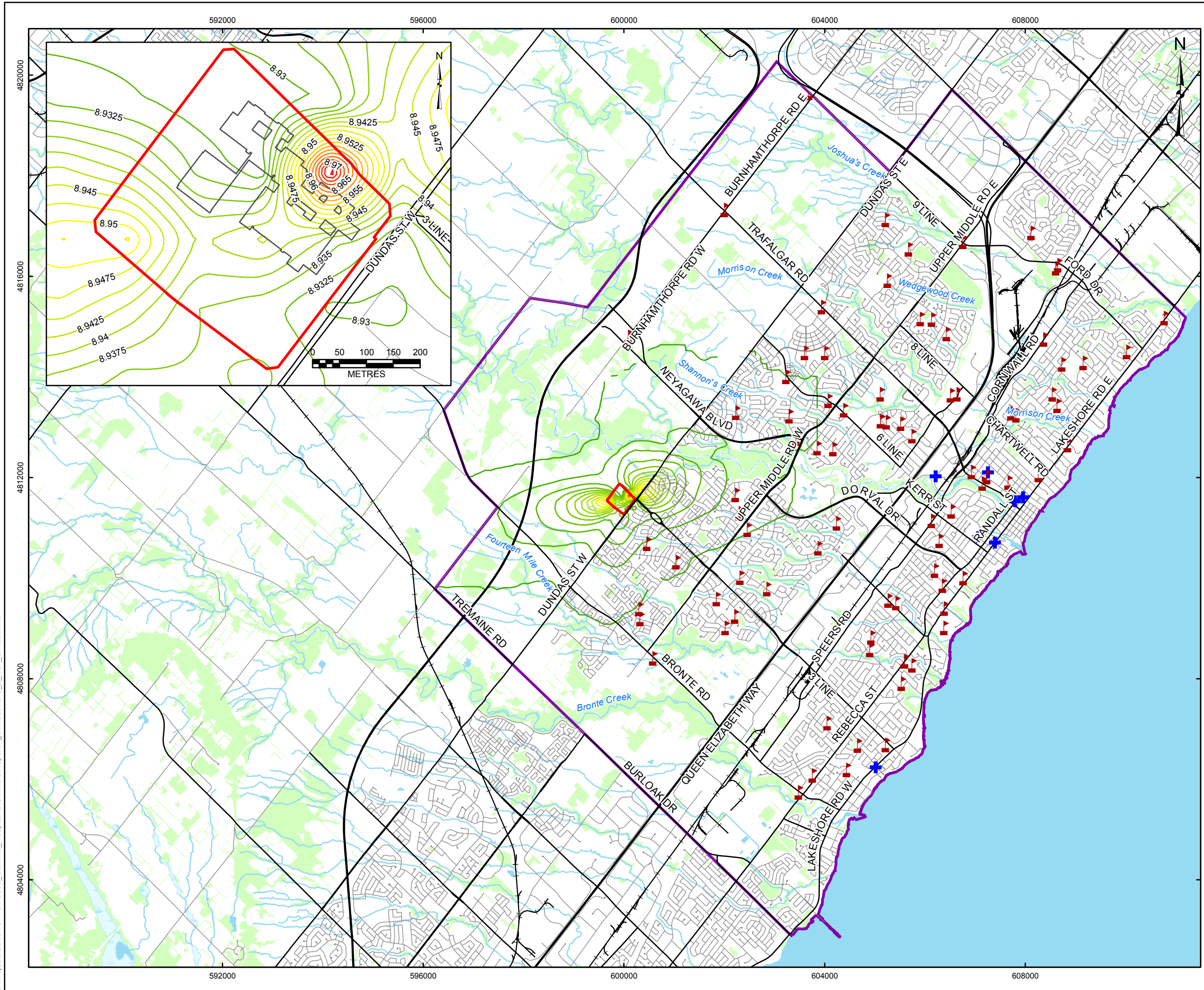
Base Data - MNR LIO, obtained 2009  
 Produced by Golder Associates Ltd under licence from  
 Ontario Ministry of Natural Resources, © Queens Printer 2012  
 Projection: Transverse Mercator Datum: NAD 83 Coordinate System: UTM Zone 17



PROJECT	OAKVILLE HOSPITAL HPAQB APPLICATION		
TITLE	CUMULATIVE FPM CONTOUR MAP (AVERAGE)		
Golder Associates Mississauga, Ontario	PROJECT NO.	10-1151-0350	SCALE AS SHOWN
	DESIGN	JO 16 Jan. 2012	REV. 0.0
	GIS	JO 26 Jul. 2012	
	CHECK	JM 26 Jul. 2012	
	REVIEW	EKL 26 Jul. 2012	

**FIGURE: 8**

G:\Projects\2010\10-1151-0350\_Oakville\_Hospital\GIS\MXDs\Reporting\Air\Scenario\_2\_wbk\_annual.mxd

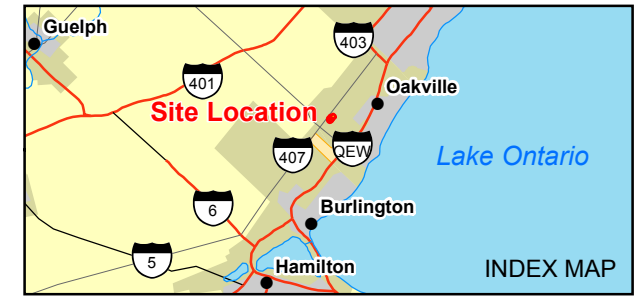


**LEGEND**

- Education
- Health Care
- Road
- Railways
- Watercourse
- Waterbody
- Wetland
- Wooded Area
- Property Boundary
- Town of Oakville

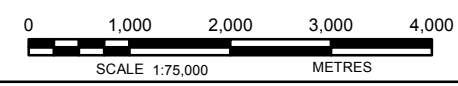
**Concentration ( $\mu\text{g}/\text{m}^3$ )**

- 8.925
- 8.9275
- 8.93
- 8.9325
- 8.935
- 8.9375
- 8.94
- 8.9425
- 8.945
- 8.9475
- 8.95
- 8.9525
- 8.955
- 8.9575
- 8.96
- 8.9625
- 8.965
- 8.9675
- 8.97
- 8.9725
- 8.975



**REFERENCE**

Base Data - MNR LIO, obtained 2009  
 Produced by Golder Associates Ltd under licence from  
 Ontario Ministry of Natural Resources, © Queens Printer 2012  
 Projection: Transverse Mercator Datum: NAD 83 Coordinate System: UTM Zone 17



PROJECT	OAKVILLE HOSPITAL HPAQB APPLICATION		
TITLE	CUMULATIVE FPM CONTOUR MAP (WOSRE)		
Golder Associates Mississauga, Ontario	PROJECT NO.	10-1151-0350	SCALE AS SHOWN
	DESIGN	JO 16 Jan. 2012	REV. 0.0
	GIS	JO 26 Jul. 2012	
	CHECK	JM 26 Jul. 2012	
	REVIEW	EKL 26 Jul. 2012	

**FIGURE: 9**