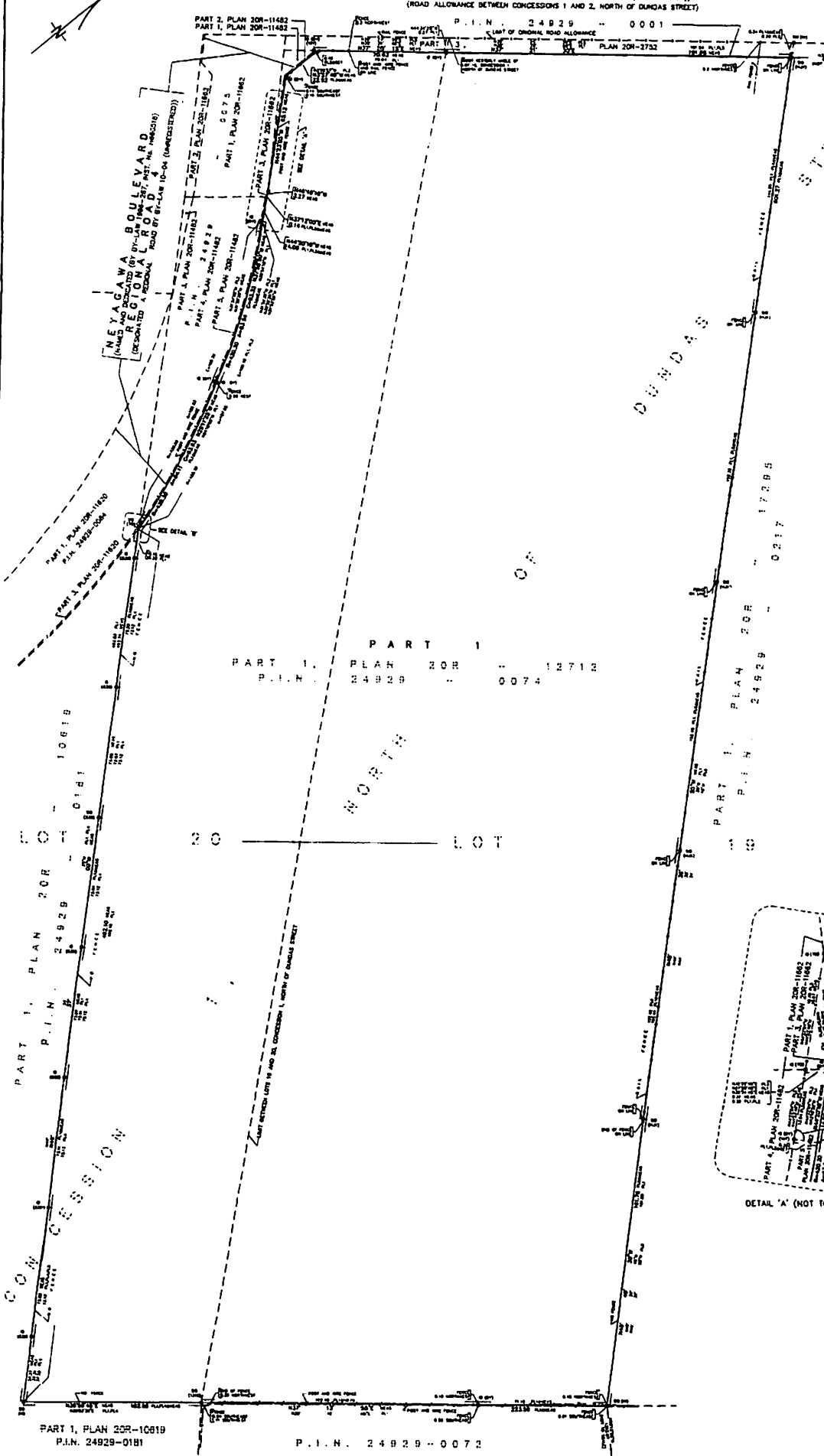


BURNHAMTHORPE ROAD  
(REGIONAL ROAD 27)  
(DESIGNATED A REGIONAL ROAD BY BY-LAW 10-04 (UNREGISTERED))  
(ROAD ALLOWANCE BETWEEN CONCESSIONS 1 AND 2, NORTH OF DUNDAS STREET)

I REQUIRE THIS PLAN TO BE DEPOSITED UNDER THE LAND FILES ACT.  
DATE Jan 31<sup>st</sup> 2007  
*R. D. G. Galt*  
A CONVEYOR'S FILE

PLAN 20R-17950  
RECEIVED AND DEPOSITED  
DATE August 9, 2007  
*John McLean*  
DEPUTY REGISTRAR FOR THE LAND FILES  
(CONVEYOR OF HALTON (04.32))

SCHEDULE		ALL OF PLAN	
PART 1 OF LOTS 19 AND 20	1	NORTH OF	2007-0874
		DUNDAS STREET	



PLAN OF SURVEY OF  
PART OF LOTS 19 AND 20  
CONCESSION 1  
NORTH OF DUNDAS STREET  
(GEOGRAPHIC TOWNSHIP OF TRAFALGAR)  
TOWN OF OAKVILLE  
REGIONAL MUNICIPALITY OF HALTON

SCALE 1:1000  
BY  
RADI-PEXTEK & EDWARD SURVEYING LTD., O.L.S.  
METRIC  
DISTANCES SHOWN ON THIS PLAN ARE IN METRES AND CAN BE CONVERTED TO FEET BY DIVIDING BY 0.3048.

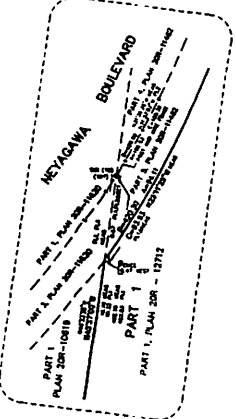
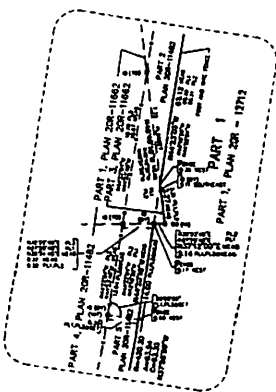
- NOTES**
- (M) CONTOUR MONUMENT FOUND
  - (S) CONTOUR STATION MONUMENT FOUND
  - (B) CONTOUR BENCH MARK
  - (P) CONTOUR PROPERTY CORNER MARK
  - (P.L.) CONTOUR PLAN 20R-17913
  - (P.L.1) CONTOUR PLAN 20R-11482
  - (P.L.2) CONTOUR PLAN 20R-11482
  - (P.L.3) CONTOUR PLAN 20R-10819
  - (P.L.4) CONTOUR PLAN 20R-17913
  - (P.L.5) CONTOUR PLAN 20R-17913
  - (P.L.6) CONTOUR PLAN 20R-17913
  - (P.L.7) CONTOUR PLAN 20R-17913
  - (P.L.8) CONTOUR PLAN 20R-17913
  - (P.L.9) CONTOUR PLAN 20R-17913
  - (P.L.10) CONTOUR PLAN 20R-17913
  - (P.L.11) CONTOUR PLAN 20R-17913
  - (P.L.12) CONTOUR PLAN 20R-17913
  - (P.L.13) CONTOUR PLAN 20R-17913
  - (P.L.14) CONTOUR PLAN 20R-17913
  - (P.L.15) CONTOUR PLAN 20R-17913
  - (P.L.16) CONTOUR PLAN 20R-17913
  - (P.L.17) CONTOUR PLAN 20R-17913
  - (P.L.18) CONTOUR PLAN 20R-17913
  - (P.L.19) CONTOUR PLAN 20R-17913
  - (P.L.20) CONTOUR PLAN 20R-17913
  - (P.L.21) CONTOUR PLAN 20R-17913
  - (P.L.22) CONTOUR PLAN 20R-17913
  - (P.L.23) CONTOUR PLAN 20R-17913
  - (P.L.24) CONTOUR PLAN 20R-17913
  - (P.L.25) CONTOUR PLAN 20R-17913
  - (P.L.26) CONTOUR PLAN 20R-17913
  - (P.L.27) CONTOUR PLAN 20R-17913
  - (P.L.28) CONTOUR PLAN 20R-17913
  - (P.L.29) CONTOUR PLAN 20R-17913
  - (P.L.30) CONTOUR PLAN 20R-17913
  - (P.L.31) CONTOUR PLAN 20R-17913
  - (P.L.32) CONTOUR PLAN 20R-17913
  - (P.L.33) CONTOUR PLAN 20R-17913
  - (P.L.34) CONTOUR PLAN 20R-17913
  - (P.L.35) CONTOUR PLAN 20R-17913
  - (P.L.36) CONTOUR PLAN 20R-17913
  - (P.L.37) CONTOUR PLAN 20R-17913
  - (P.L.38) CONTOUR PLAN 20R-17913
  - (P.L.39) CONTOUR PLAN 20R-17913
  - (P.L.40) CONTOUR PLAN 20R-17913
  - (P.L.41) CONTOUR PLAN 20R-17913
  - (P.L.42) CONTOUR PLAN 20R-17913
  - (P.L.43) CONTOUR PLAN 20R-17913
  - (P.L.44) CONTOUR PLAN 20R-17913
  - (P.L.45) CONTOUR PLAN 20R-17913
  - (P.L.46) CONTOUR PLAN 20R-17913
  - (P.L.47) CONTOUR PLAN 20R-17913
  - (P.L.48) CONTOUR PLAN 20R-17913
  - (P.L.49) CONTOUR PLAN 20R-17913
  - (P.L.50) CONTOUR PLAN 20R-17913
  - (P.L.51) CONTOUR PLAN 20R-17913
  - (P.L.52) CONTOUR PLAN 20R-17913
  - (P.L.53) CONTOUR PLAN 20R-17913
  - (P.L.54) CONTOUR PLAN 20R-17913
  - (P.L.55) CONTOUR PLAN 20R-17913
  - (P.L.56) CONTOUR PLAN 20R-17913
  - (P.L.57) CONTOUR PLAN 20R-17913
  - (P.L.58) CONTOUR PLAN 20R-17913
  - (P.L.59) CONTOUR PLAN 20R-17913
  - (P.L.60) CONTOUR PLAN 20R-17913
  - (P.L.61) CONTOUR PLAN 20R-17913
  - (P.L.62) CONTOUR PLAN 20R-17913
  - (P.L.63) CONTOUR PLAN 20R-17913
  - (P.L.64) CONTOUR PLAN 20R-17913
  - (P.L.65) CONTOUR PLAN 20R-17913
  - (P.L.66) CONTOUR PLAN 20R-17913
  - (P.L.67) CONTOUR PLAN 20R-17913
  - (P.L.68) CONTOUR PLAN 20R-17913
  - (P.L.69) CONTOUR PLAN 20R-17913
  - (P.L.70) CONTOUR PLAN 20R-17913
  - (P.L.71) CONTOUR PLAN 20R-17913
  - (P.L.72) CONTOUR PLAN 20R-17913
  - (P.L.73) CONTOUR PLAN 20R-17913
  - (P.L.74) CONTOUR PLAN 20R-17913
  - (P.L.75) CONTOUR PLAN 20R-17913
  - (P.L.76) CONTOUR PLAN 20R-17913
  - (P.L.77) CONTOUR PLAN 20R-17913
  - (P.L.78) CONTOUR PLAN 20R-17913
  - (P.L.79) CONTOUR PLAN 20R-17913
  - (P.L.80) CONTOUR PLAN 20R-17913
  - (P.L.81) CONTOUR PLAN 20R-17913
  - (P.L.82) CONTOUR PLAN 20R-17913
  - (P.L.83) CONTOUR PLAN 20R-17913
  - (P.L.84) CONTOUR PLAN 20R-17913
  - (P.L.85) CONTOUR PLAN 20R-17913
  - (P.L.86) CONTOUR PLAN 20R-17913
  - (P.L.87) CONTOUR PLAN 20R-17913
  - (P.L.88) CONTOUR PLAN 20R-17913
  - (P.L.89) CONTOUR PLAN 20R-17913
  - (P.L.90) CONTOUR PLAN 20R-17913
  - (P.L.91) CONTOUR PLAN 20R-17913
  - (P.L.92) CONTOUR PLAN 20R-17913
  - (P.L.93) CONTOUR PLAN 20R-17913
  - (P.L.94) CONTOUR PLAN 20R-17913
  - (P.L.95) CONTOUR PLAN 20R-17913
  - (P.L.96) CONTOUR PLAN 20R-17913
  - (P.L.97) CONTOUR PLAN 20R-17913
  - (P.L.98) CONTOUR PLAN 20R-17913
  - (P.L.99) CONTOUR PLAN 20R-17913
  - (P.L.100) CONTOUR PLAN 20R-17913

BEARINGS SHOWN HEREON ARE OLD BEARINGS DERIVED FROM THE ONTARIO GEODESIC SYSTEM AND ALL WERE (1) ZONE 17, CENTRAL MERIDIAN BY WEST LONGITUDE, USING CORRECTION, (2) LOCAL, (3) PROXIMATE, (4) FROM THE 4200-2000 EASTING, (5) FROM THE CONTROL STATION 042000000, (6) FROM THE 4200000 EASTING, (7) 042772439

DISTANCES ARE GROUND DISTANCES AND CAN BE CONVERTED TO HORIZONTAL BY MULTIPLYING BY A CORRECTION SCALE FACTOR OF 0.9997

**SURVEYOR'S CERTIFICATE**

I CERTIFY THAT  
1. THIS SURVEY AND PLAN ARE CORRECT AND IN ACCORDANCE WITH THE SURVEYORS ACT, THE SURVEYORS REGULATION AND THE LAND FILES ACT AND THE REGULATIONS MADE UNDER THEM.  
2. THE SURVEY WAS COMPLETED ON THE 1<sup>st</sup> DAY OF Jan, 2007.  
DATE Jan 31<sup>st</sup> 2007  
*R. D. G. Galt*  
ONTARIO LAND SURVEYOR



**rpe** RADI-PEXTEK & EDWARD SURVEYING LTD.  
ONTARIO LAND SURVEYORS  
843 Christie Road, Suite 7  
Woodbridge, Ontario L4L 8A3  
Tel: (416) 335-3000 Fax: (416) 335-5001  
Tel: (905) 264-0881 Fax: (905) 264-2099  
Website: www.rpe.ca  
DRAWN: D.J.G. CHECKED: R.D.G.  
CAD FILE No. 03061901 JOB No. 05-081  
Jan 31, 2007 - 14:05:20