

Key Plan
N.T.S.



Legend

NORTH PARK SPORTS PARK
REFER TO LANDSCAPE
DRAWINGS BY MBTW

**SIXTEEN MILE COMMUNITY
CENTRE AND LIBRARY
AREA B**

NORTH PARK SPORTS PARK
REFER TO LANDSCAPE
DRAWINGS BY MBTW

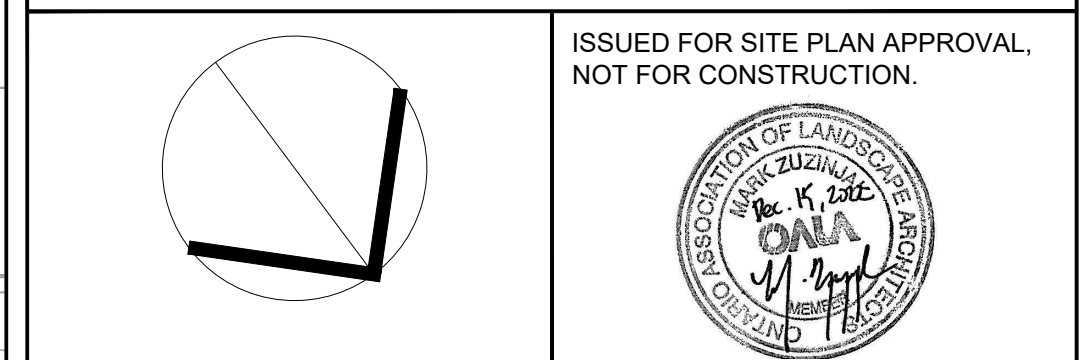
**SIXTEEN MILE COMMUNITY
CENTRE AND LIBRARY
AREA A**

GENERAL NOTES:

1. Drawings not to be used for construction unless authorized by the Landscape Architect.
2. Contractor shall report any discrepancies between the drawings and site conditions prior to commencement of the work.
3. All utility locates are the responsibility of the Contractor. Hand dig within the limits recommended by the service utility. Utility conflicts with proposed tree locations must be reported immediately to the Landscape Architect.
4. Sixteen Mile Community Centre & Library base drawing provided by Diamond Schmitt Architects.
5. For Sixteen Mile Community Centre grading information refer to drawing by MTE Consultants.
6. North Park Sports Park base drawings provided by The MBTW Group.
7. Landscape drawings show engineering information for design purposes only. Do not construct engineering works from these drawings.

LANDSCAPE KEY PLAN

North Park Development: Community Centre,
Library and Sports Park, Oakville, ON



DATE	ISSUE	BY
Nov 2 2021	Preliminary Landscape Schematics	MZ
Feb 4 2022	Issued for Site Plan Application 1	ER
June 10 2022	Issued for Site Plan Application 2	ER
June 10 2022	Issued for Minor Variance	ER
July 11 2022	Issued for 80% CD	MZ
Sept 12 2022	Issued for Committee of Adjustments	MZ
Sept 21 2022	Issued for 60% CD	MZ
Nov 14 2022	Issued for Tender	MZ
Dec 15 2022	Issued for Site Plan Application 3	MZ

DATE	REVISIONS	BY
Jan 25 2022	Issued for Coordination	ER
Jan 27 2022	Issued for Coordination	ER
Mar 11 2022	Issued for Coordination	MZ
May 27 2022	Issued for Coordination	MZ

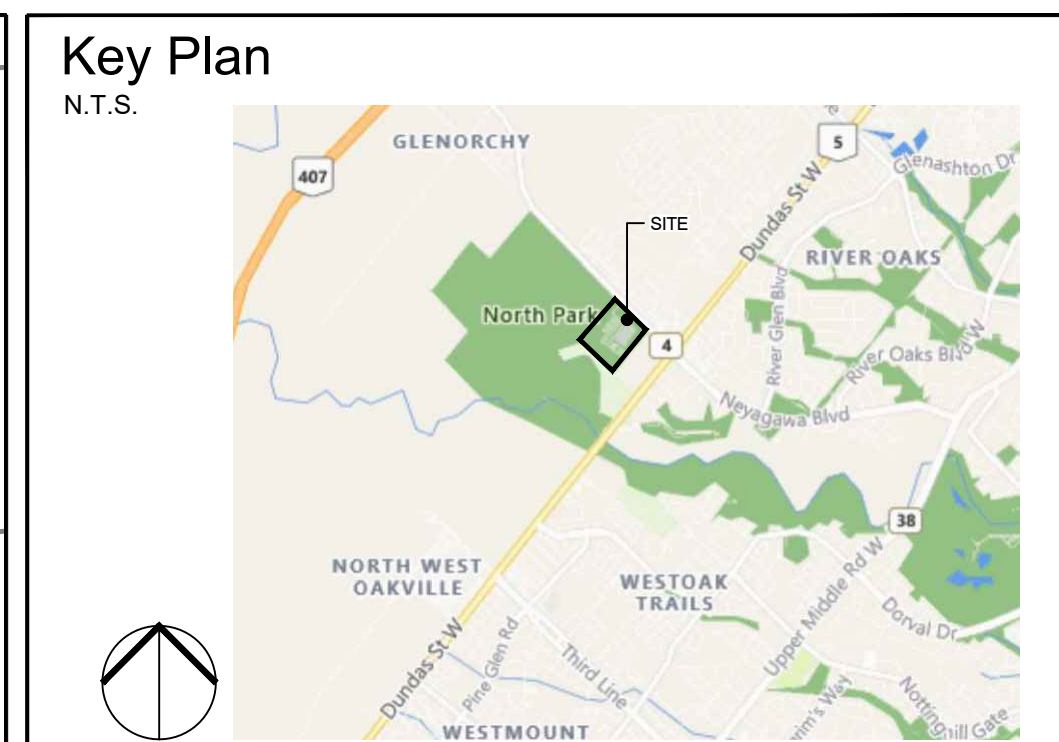
GSP group
www.gspgroup.ca

Date: June 2022
Scale: 1:750 @ 35x48
Project No: 21337

ISSUED FOR SITE PLAN APPROVAL,
NOT FOR CONSTRUCTION.

10 0 0 10 20 30
1:750 (ft)

00.07

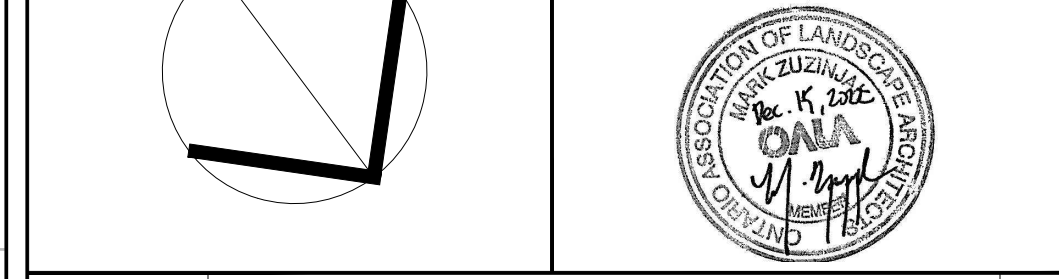


- ### Legend
- PROPERTY LINE
 - LIMIT OF WORK
 - EXISTING TREES
 - PROPOSED TREES
 - SHRUB PLANTING
 - ORNAMENTAL GRASS PLANTING
 - SOD (TYPE 1)
 - SOD (TYPE 2)
 - UPLAND SEED MIX
 - LOW LYING SEED MIX
 - THRESHOLD PAVING
 - CONCRETE PAVING W/ BROOM FINISH
 - PLAZA PAVING (TYPE 1)
 - PLAZA PAVING (TYPE 2)
 - PLAZA PAVING (TYPE 3)
 - BENCH (TYPE 1)
 - BENCH (TYPE 2)
 - BENCH (TYPE 3)
 - BENCH (TYPE 4)
 - BENCH (TYPE 5)
 - BIKE RACK
 - COMBINED WASTE RECEPTACLE
 - GROUP TABLE & UMBRELLA
 - ACCESSIBLE GROUP TABLE
 - BICYCLE REPAIR STATION
 - OVAL PLANTER / BENCH
 - LIGHT STANDARDS (REFER TO ELECTRICAL)

- ### REFERENCE NOTES
- Survey provided by Town of Oakville, received on [Date].
 - Refer to traffic consultant drawings for all lane crossings and accessible parking aisle treatments.
 - Grading and servicing shown for reference only. Refer to grading, servicing, curbs and curb ramp information.
 - Lighting for reference only. Refer to electrical drawings for detailed lighting information.
 - Refer to park landscape drawings by MBTW for existing tree species and canopy cover plan.
- ### GENERAL NOTES:
- Drawings not to be used for construction unless authorized by the Landscape Architect.
 - Contractor shall report any discrepancies between the drawings and site conditions prior to commencement of the work.
 - All utility locations are the responsibility of the Contractor. Hand dig within the limits recommended by the service utility. Utility conflicts with proposed tree locations must be reported immediately to the Landscape Architect.
 - Sixteen Mile Community Centre & Library base drawing provided by Diamond Schmitt Architects.
 - For Sixteen Mile Community Centre grading information refer to drawing by MTE Consultants.
 - North Park Sports Park base drawings provided by The MBTW Group.
 - Landscape drawings show engineering information for design purposes only. Do not construct engineering works from these drawings.

LANDSCAPE SITE PLAN AREA A

North Park Development: Community Centre, Library and Sports Park, Oakville, ON



DATE	ISSUE	BY
Feb 8 2022	Issued for Site Plan Application 1	MZ
June 10 2022	Issued for Site Plan Application 2	ER
June 10 2022	Issued for Minor Variance	ER
July 11 2022	Issued for 30% CD	ZH
Sept 12 2022	Issued for Committee of Adjustments	MZ
Sept 21 2022	Issued for 60% CD	MZ
Nov 14 2022	Issued for Tender	MZ
Dec 15 2022	Issued for Site Plan Application 3	MZ

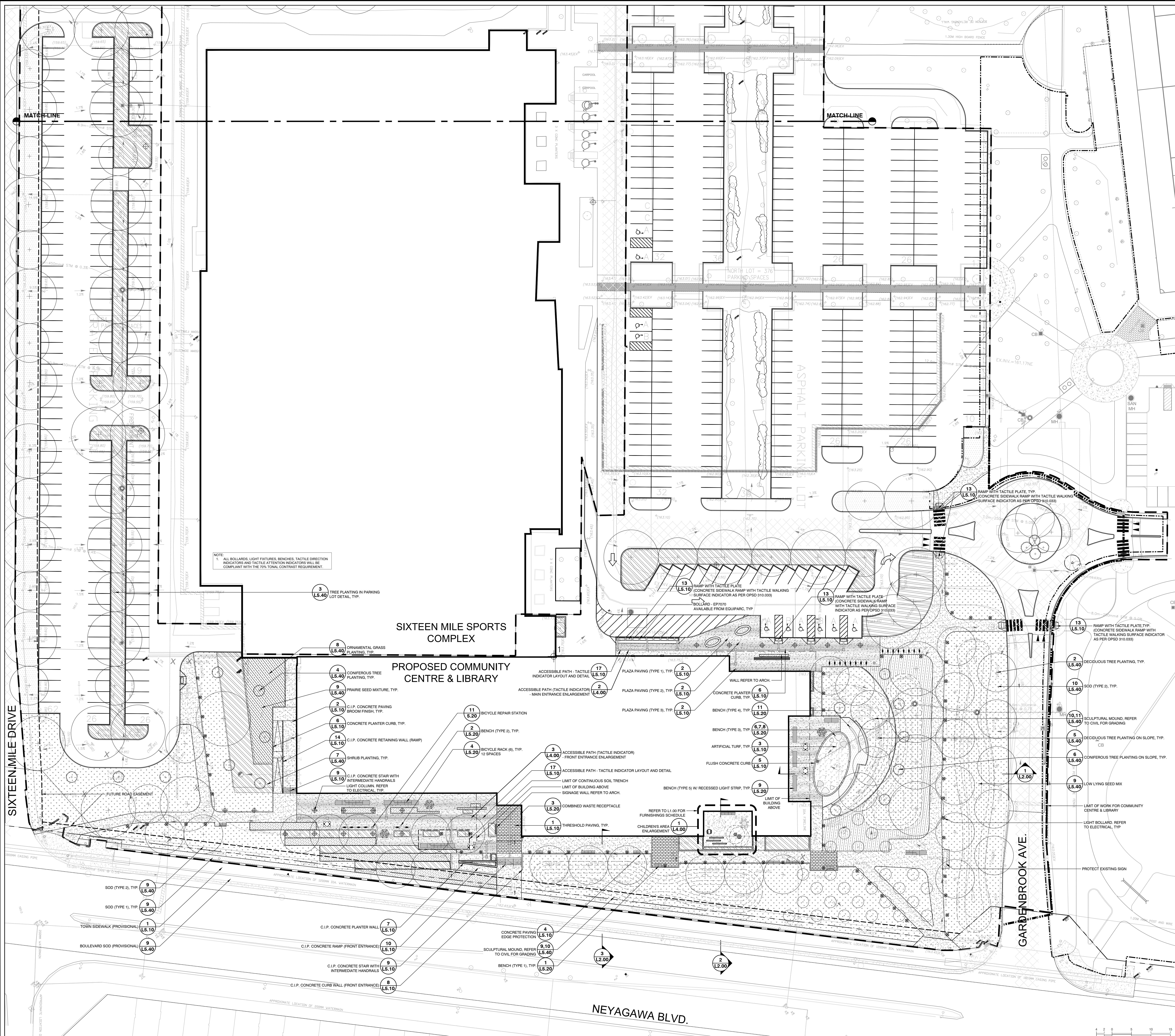
DATE	REVISIONS	BY
Jan 25 2022	Issued for Coordination	ER
Jan 27 2022	Issued for Coordination	ER
May 2 2022	Issued for Coordination	MZ

1500 Steeles Ave. East, Suite 101
Markham, Ontario L3R 9V7
www.gsgroup.ca

Date: June 2022
Scale: 1:300 @ 35x48

ISSUED FOR SITE PLAN APPROVAL, NOT FOR CONSTRUCTION.

Drawn by: MZ, ER
Project No.: 21337



L1.00

Key Plan
N.T.S.

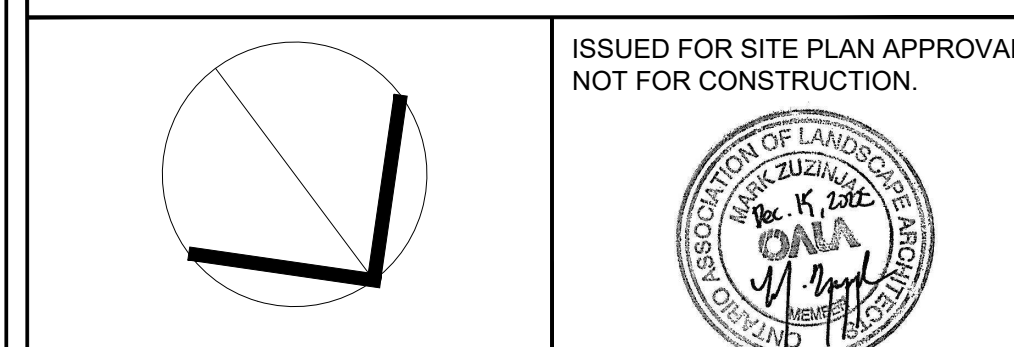


Legend

- PROPERTY LINE
- - - LIMIT OF WORK
- EXISTING TREES
- PROPOSED TREES
- ▨ SHRUB PLANTING
- ▨ ORNAMENTAL GRASS PLANTING
- ▨ SOD (TYPE 1)
- ▨ SOD (TYPE 2)
- ▨ UPLAND SEED MIX
- ▨ LOW LYING SEED MIX
- ▨ THRESHOLD PAVING
- ▨ CONCRETE PAVING W/ BROOM FINISH
- ▨ PLAZA PAVING (TYPE 1)
- ▨ PLAZA PAVING (TYPE 2)
- ▨ PLAZA PAVING (TYPE 3)
- ▨ BENCH (TYPE 1)
- ▨ BENCH (TYPE 2)
- ▨ BENCH (TYPE 3)
- ▨ BENCH (TYPE 4)
- ▨ BENCH (TYPE 5)
- ▨ BIKE RACK
- ▨ COMBINED WASTE RECEPTACLE
- ▨ GROUP TABLE & UMBRELLA
- ▨ ACCESSIBLE GROUP TABLE
- ▨ BICYCLE REPAIR STATION
- ▨ OVAL PLANTER / BENCH
- ▨ LIGHT STANDARDS (REFER TO ELECTRICAL)

- GENERAL NOTES:**
- Drawings not to be used for construction unless authorized by the Landscape Architect.
 - Contractor shall report any discrepancies between the drawings and site conditions prior to commencement of the work.
 - All utility locations are the responsibility of the Contractor. Hand dig within the limits recommended by the service utility. Utility conflicts with proposed tree locations must be reported immediately to the Landscape Architect.
 - Sixteen Mile Community Centre & Library base drawing provided by Diamond Schmitt Architects.
 - For Sixteen Mile Community Centre grading information refer to drawing by MTE Consultants.
 - North Park Sports Park base drawings provided by The MBTW Group.
 - Landscape drawings show engineering information for design purposes only. Do not construct engineering works from these drawings.

**LANDSCAPE SITE PLAN
AREA B**
North Park Development: Community Centre,
Library and Sports Park, Oakville, ON



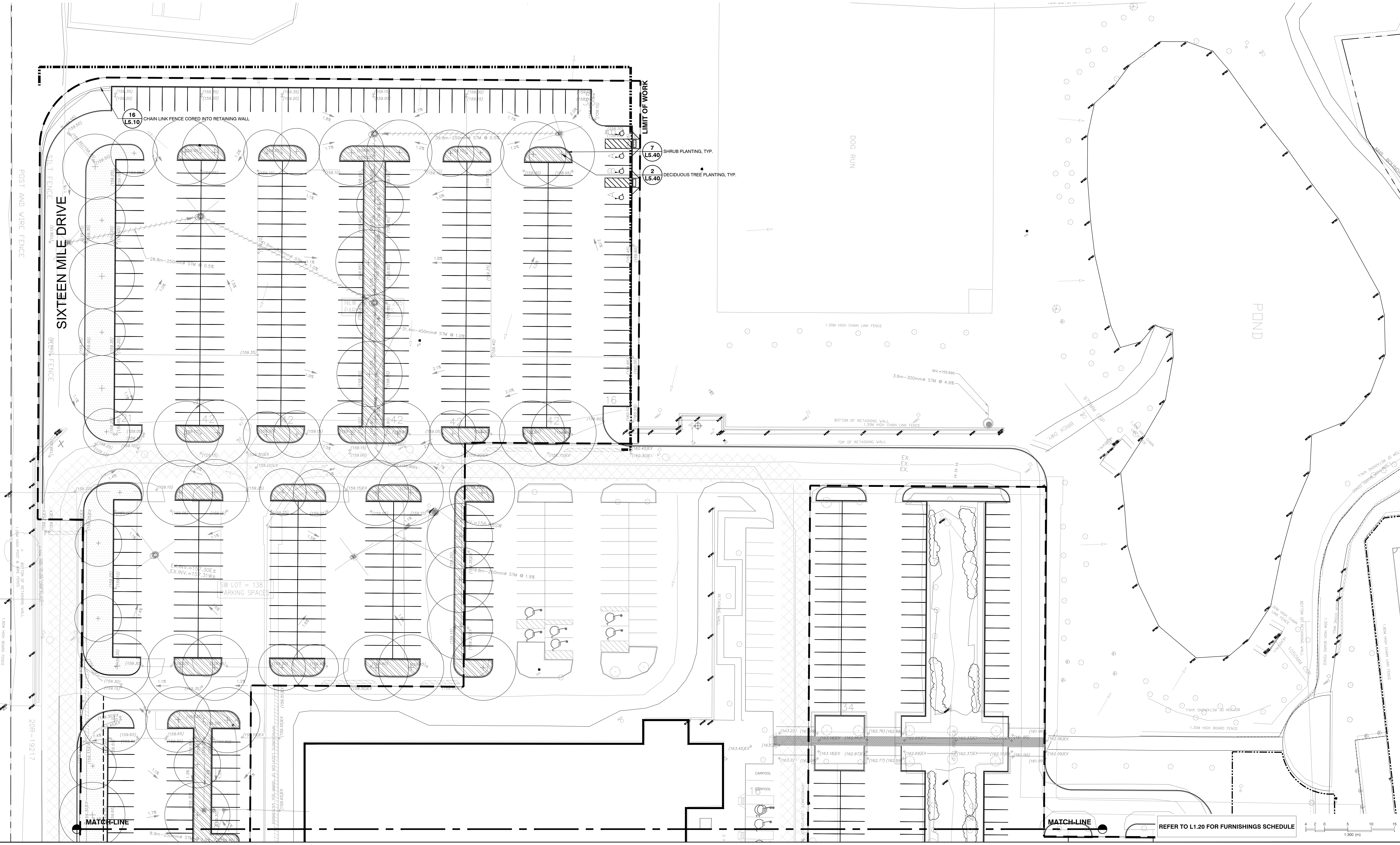
DATE	ISSUE	BY
March 10, 2022	Issued for Site Plan Approval	BT
June 10, 2022	Issued for Site Plan Application 2	BT
June 11, 2022	Issued for Minor Variance	BT
July 11, 2022	Issued for 50% CD	ZH
Sept 12, 2022	Issued for Committee of Adjustments	MZ
Sept 21, 2022	Issued for 60% CD	MZ
Nov 14, 2022	Issued for Tender	MZ
Dec 15, 2022	Issued for Site Plan Application 3	MZ

DATE	REVISIONS	BY
May 2, 2022	Issued for Coordination	MZ

GSP group
25 Stone Street, Suite 201 | 1020 Stone Street, Suite 201
Oakville, Ontario L6M 3K8 | Oakville, Ontario L6M 3K8
1-888-888-8888 | 905-847-8888
www.gspgroup.ca

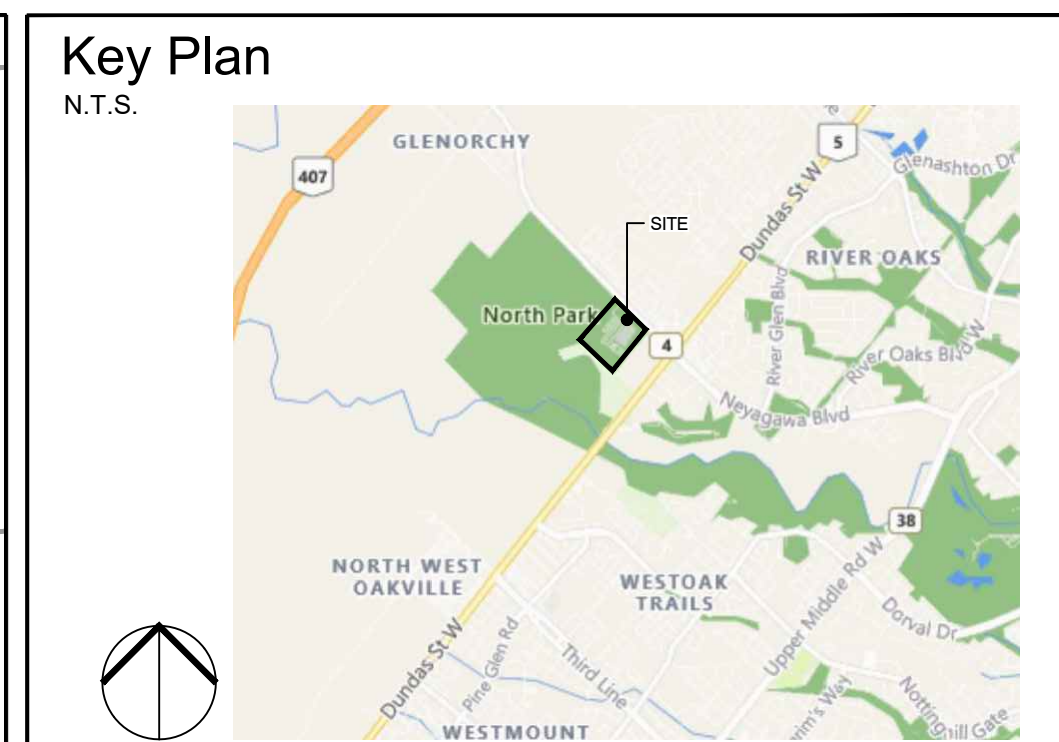
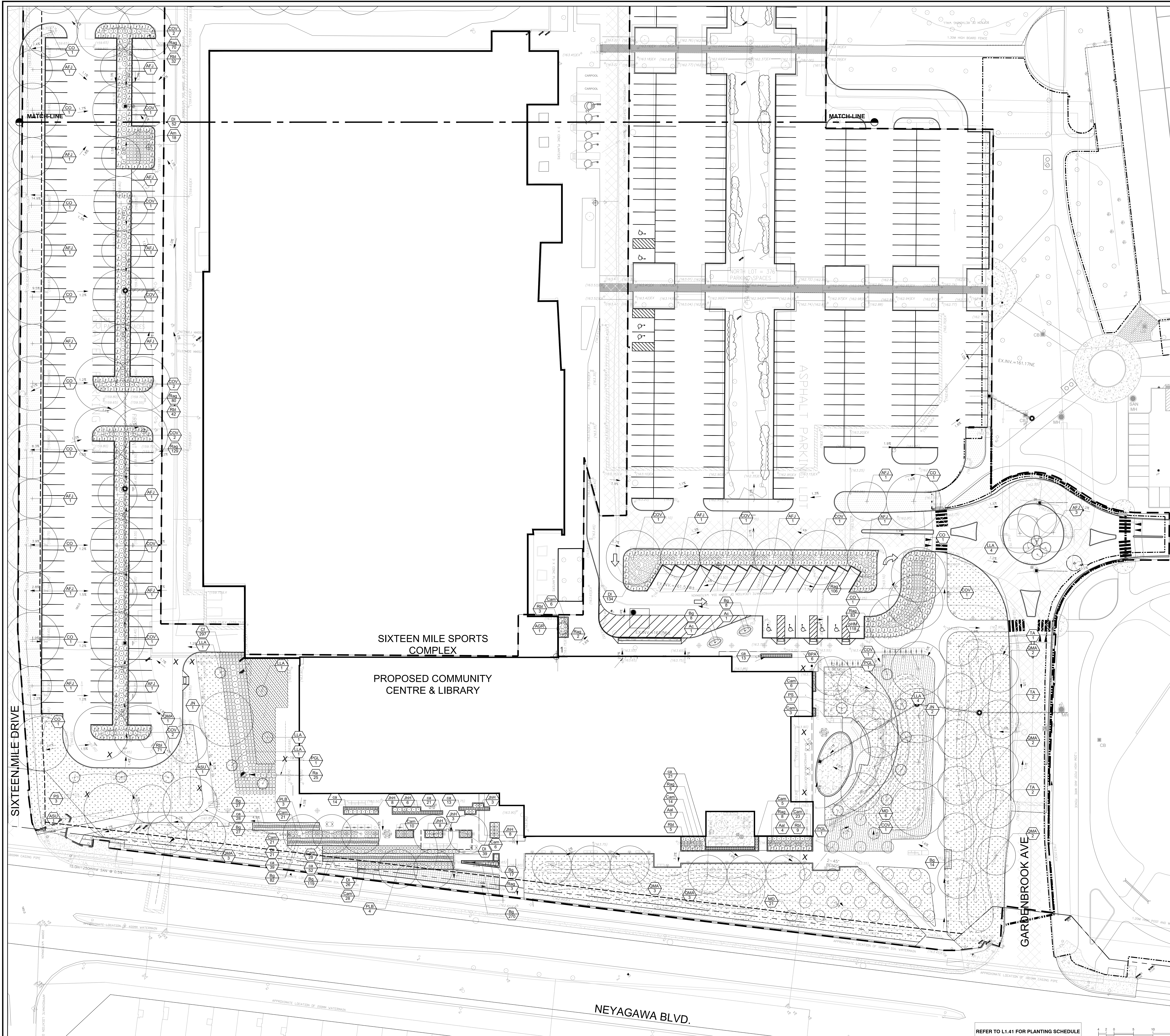
Date: June 2022
Scale: 1:300 @ 35x48
Drawn By: MZ, BT
Project No.: 21337

L1.01



REFER TO L1.20 FOR FURNISHINGS SCHEDULE

1 2 3 4 5 6 7 8 9 10 15
1:300 (m)



- Legend**
- PROPERTY LINE
 - - - - - LIMIT OF WORK
 - EXISTING TREES
 - PROPOSED TREES
 - ▨ SHRUB PLANTING
 - ▨ ORNAMENTAL GRASS PLANTING
 - ▨ SOD (TYPE 1)
 - ▨ SOD (TYPE 2)
 - ▨ UPLAND SEED MIX
 - ▨ LOW LYING SEED MIX
 - ▨ THRESHOLD PAVING
 - ▨ CONCRETE PAVING W/ BROOM FINISH
 - ▨ PLAZA PAVING (TYPE 1)
 - ▨ PLAZA PAVING (TYPE 2)
 - ▨ PLAZA PAVING (TYPE 3)
 - ▨ BENCH (TYPE 1)
 - ▨ BENCH (TYPE 2)
 - ▨ BENCH (TYPE 3)
 - ▨ BENCH (TYPE 4)
 - ▨ BENCH (TYPE 5)
 - ▨ BIKE RACK
 - ▨ COMBINED WASTE RECEPTACLE
 - ▨ GROUP TABLE & UMBRELLA
 - ▨ ACCESSIBLE GROUP TABLE
 - ▨ BICYCLE REPAIR STATION
 - ▨ OVAL PLANTER / BENCH
 - ▨ LIGHT STANDARDS (REFER TO ELECTRICAL)

- GENERAL NOTES:**
1. Drawings not to be used for construction unless authorized by the Landscape Architect.
 2. Contractor shall report any discrepancies between the drawings and site conditions prior to commencement of the work.
 3. All utility locates are the responsibility of the Contractor. Hand dig within the limits recommended by the service utility. Utility conflicts with proposed tree locations must be reported immediately to the Landscape Architect.
 4. Sixteen Mile Community Centre & Library base drawing provided by Diamond Schmitt Architects.
 5. For Sixteen Mile Community Centre grading information refer to drawing by MTE Consultants.
 6. North Park Sports Park base drawings provided by The MBTW Group.
 7. Landscape drawings show engineering information for design purposes only. Do not construct engineering works from these drawings.

**PLANTING PLAN
AREA A**

North Park Development: Community Centre,
Library and Sports Park, Oakville, ON

DATE	ISSUE	BY
Feb 4 2022	Issue for Site Plan Application 1	MR
June 10 2022	Issue for Site Plan Application 2	MR
July 11 2022	Issue for 30% CD	JH
Sept 12 2022	Issue for Committee of Adjustments	MZ
Sept 22 2022	Issue for 60% CD	MZ
Nov 14 2022	Issue for Tender	MZ
Dec 15 2022	Issue for Site Plan Application 3	MZ

DATE	REVISIONS	BY
Jan 27 2022	Issue for Coordination	MR
May 2 2022	Issue for Coordination	MZ

1600 Steeles East, Suite 101
Markham, Ontario L3R 9V7
1-877-474-7777

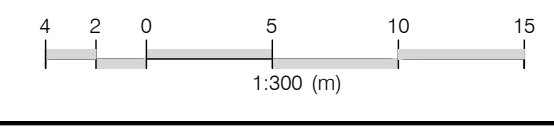
1600 Steeles East, Suite 101
Markham, Ontario L3R 9V7
1-877-474-7777

www.gspgroup.ca

Date: June 2022
Scale: 1:300 @ 35x48
Drawn By: MZ: BR
Project No: 21337

L1.40

REFER TO L1.41 FOR PLANTING SCHEDULE



PLANT SCHEDULE COMMUNITY

CONFEROUS TREES	QTY	BOTANICAL NAME	COMMON NAME	SIZE	CONTAINER	REMARKS
LLA	12	Larix laricina	Larch	175cm Ht.	W.B./B&B	Native
PGL	3	Picea glauca	White Spruce	175cm Ht.	W.B./B&B	Native
PS	4	Pinus strobus	White Pine	175cm Ht.	W.B./B&B	Native

DECIDUOUS TREES	QTY	BOTANICAL NAME	COMMON NAME	SIZE	CONTAINER	REMARKS
AFJ	42	Acer freemanii 'Jeffersred' TM	Autumn Blaze Maple	60mm Cal.	W.B./B&B	Native Cultivar
ASU	2	Acer saccharum	Sugar Maple	60mm Cal.	W.B./B&B	Native
AGR	1	Amelechier x grandiflora 'Robin Hill'	Apple Serviceberry	175cm Ht.	W.B./B&B	Clump Form
BPA	6	Betula papyrifera	Paper Birch	60mm Cal.	W.B./B&B	Native Clump form.
COV	46	Coryx avata	Shagbark Hickory	60mm Cal.	W.B./B&B	Native
CO	16	Celtis occidentalis	Common Hackberry	60mm Cal.	W.B./B&B	Native
JN	3	Juglans nigra	Black Walnut	60mm Cal.	W.B./B&B	Native
MD	27	Malus x 'Dolgo'	Dolgo Crabapple	40mm Cal.	W.B./B&B	Native
PLB	7	Platanus acerifolia 'Bloodgood'	London Plane Tree	60mm Cal.	W.B./B&B	Native Cultivar
QMA	16	Quercus macrocarpa	Burr Oak	60mm Cal.	W.B./B&B	Native
TA	5	Tilia americana	Basswood	60mm Cal.	W.B./B&B	Native

CONFEROUS SHRUBS	QTY	BOTANICAL NAME	COMMON NAME	SIZE	CONTAINER	SPACING	REMARKS
JHH	36	Juniperus horizontalis 'Hughes'	Hughes Juniper	60cm	3 gal.	1.2m	

DECIDUOUS SHRUBS	QTY	BOTANICAL NAME	COMMON NAME	SIZE	CONTAINER	SPACING	REMARKS
Aal	5	Amelechier alternifolia	Saskatoon Serviceberry	60cm	3 gal.	1.5m	Native
Ac	2	Amelechier canadensis	Canadian Serviceberry	250cm ht.	10 gal.	3m	Native Drought Tolerant.
Am	18	Aronia melanocarpa	Black Chokeberry	60cm	3 gal.	0.9m	Native
Cam	148	Ceanothus americanus	New Jersey Tea	60cm	3 gal.	0.9m	Native
CT	297	Comus sericea 'Farrow' TM	Asiatic Fire Red Twig Dogwood	60cm	3 gal.	0.9m	Native
DI	272	Diervilla lonicera	Dwarf Bush Honeysuckle	60cm	3 gal.	0.9m	Native
Ra	25	Rhus aromatica	Fragrant Sumac	3 gal.	1.5m	Native	
Rag	876	Rhus aromatica 'Gro-Low'	Gro-Low Fragrant Sumac	60cm	3 gal.	1.5m	Native
Rbl	348	Rosa blanda	Smooth Rose	40cm	3 gal.	1.2m	Native

ORNAMENTAL GRASSES	QTY	BOTANICAL NAME	COMMON NAME	SIZE	CONTAINER	SPACING	REMARKS
ca	205	Calamagrostis scoufiora 'Karl Foerster'	Feather Reed Grass	40-60cm	1 gal.	0.6m	
pHM	118	Panicum virgatum 'Heavy Metal'	Heavy Metal Switch Grass	40-60cm	1 gal.	0.6m	Native Cultivar

ORNAMENTAL GRASSES	QTY	BOTANICAL NAME	COMMON NAME	SIZE	CONTAINER	SPACING	REMARKS
Bg	572	Bouteloua gracilis 'Blonde Ambition'	Blue Grama Grass	1 gal.	Pot	600mm	Native Cultivar. Drought Tolerant.

PLANTING NOTES:

1. ALL PLANT MATERIAL SHALL BE NO. 1 NURSERY GROWN, MEETING SPECIFICATIONS FOR SIZE, HEIGHT, SPREAD, GRADING, QUALITY, METHOD OF CULTIVATION, AND BOLLING AND BOLLUP SPECIFICATIONS AS SET OUT IN THE 8TH EDITION 2009 GUIDE SPECIFICATION FOR NURSERY STOCK PREPARED BY THE CNLA.
2. NO SUBSTITUTIONS IN SPECIES, CULTIVAR, QUANTITY, SIZE OR CONDITION WILL BE PERMITTED WITHOUT THE WRITTEN APPROVAL OF THE CONSULTANT. ANY UNAPPROVED SUBSTITUTED MATERIAL WILL BE REQUIRED TO BE REMOVED FROM THE SITE AT THE EXPENSE OF THE CONTRACTOR.
3. ANY INCONSISTENCIES FOUND IN THE QUANTITIES AS SHOWN ON THE PLAN AND THE PLANT LIST SHALL BE IMMEDIATELY REPORTED TO THE CONSULTANT.
4. LAYOUT SHALL BE THE RESPONSIBILITY OF THE CONTRACTOR. LAYOUT, PLANT STAKE-OUT AND DELIVERED PLANT MATERIAL SHALL BE APPROVED BY THE CONSULTANT PRIOR TO INSTALLATION.
5. NATIVE OR IMPORTED TOPSOIL SHALL BE TESTED AS SPECIFIED AND APPROVED BY THE CONSULTANT PRIOR TO ADDING ANY AMENDMENTS AND PLANTING. PLANTING MIX WHERE INDICATED SHALL FOLLOW THE MIX SPECIFICATIONS.
6. PROVIDE A MINIMUM MAXIMUM DEPTH OF APPROVED TOPSOIL OR PLANTING MIX IN ALL BEDS. UNLESS OTHERWISE NOTED. ALL BEDS SHALL BE MULCHED WITH APPROVED MULCH TO A MINIMUM DEPTH OF 75MM UNLESS OTHERWISE NOTED. DEPTHS SHALL BE THOSE ACHIEVED UNDER LIGHT COMPACTION. AREAS TO BE SOODED OR SEEDED SHALL BE PROVIDED WITH 100 MM OF APPROVED TOPSOIL, COMPACTED TO 85% STD.
7. NO BARE-ROOT PLANTING SHALL BE PERMITTED BETWEEN MAY 15 AND OCTOBER 15.
8. PLANT MATERIAL SHALL BE THOROUGHLY WATERED AT THE TIME OF PLANTING.
9. THOSE AREAS NOT SPECIFICALLY IDENTIFIED FOR PLANTING, OR OTHERWISE NOTED, SHALL BE SOODED. SOODING SHALL BE MAINTAINED AND WARRANTED UNTIL FIRST CUT. SEEDING SHALL BE MAINTAINED AND WARRANTED UNTIL OCTOBER 15 FOR SPRING SEEDING AND JUNE 15 FOR FALL SEEDING.
10. ALL TREES AND SHRUBS SHALL BE UNDER WARRANTY FOR A PERIOD OF 24 MONTHS COMMENCING ON THE DATE OF ACCEPTANCE.
11. THE CONTRACTOR SHALL PROVIDE MAINTENANCE IMMEDIATELY AFTER THE PLANTS ARE INSTALLED AND CONTINUE THROUGHOUT THE ENTIRE WARRANTY PERIOD. MAINTENANCE REQUIREMENTS SHALL INCLUDE ALL PROCEDURES CONSISTENT WITH PROPER HORTICULTURAL PRACTICES TO ENSURE NORMAL, VIGOROUS, AND HEALTHY GROWTH OF ALL MATERIAL PLANTED. ALL STAKES, WIRE, HOSE, AND OTHER ACCESSORIES MUST BE REMOVED PRIOR TO FINAL WARRANTY INSPECTION.
12. ALL PLANT MATERIAL USED AS REPLACEMENTS FOR UNACCEPTABLE MATERIAL SHALL BE OF THE SAME QUALITY AND REQUIREMENTS PRESCRIBED FOR THE ORIGINAL MATERIAL. REPLACEMENTS SHALL BE MADE ONCE UNDER THE WARRANTY.

GROWING MEDIUM NOTES:

- 1.1. GROWING MEDIUMS (TOPSOIL, PLANTING MIXES) AND ORGANIC AMENDMENTS MUST BE TESTED BY AN OMAFRA ACCREDITED AGENCY AND APPROVED PRIOR TO USE. TEST TOPSOIL FOR PH, P, CA AND MG. MINOR ELEMENT VALUES, SOLUBLE SALT CONTENT, ORGANIC MATTER, TEXTURE AND PH VALUE APPROPRIATE FOR THE ESTABLISHMENT AND GROWTH OF ORNAMENTAL NURSERY STOCK. SUBMIT TEST RESULTS AND ANALYSIS INCLUDING RECOMMENDATIONS FOR AMENDMENTS AND FERTILIZER TO THE CONSULTANT.
- 2.1. TOPSOIL:
 - 2.1. TOPSOIL SHALL BE FERTILE, FRIABLE, TOPSOIL, FREE OF FRAGMENTS LARGER THAN 75MM IN SIZE, STONES OVER 25MM IN DIAMETER, DEBRIS, PLANTS OR THEIR ROOTS, STICKS, NOXIOUS SEED PLANTS, STICKS, SEEDS, SALTS, SOIL STERILANTS, CHEMICAL CONTAMINANTS, OTHER MATERIALS DETRIMENTAL TO PLANT GROWTH.
 - 2.2. FERTILIZER AND AMENDMENTS: MUST BE MADE AS PER SOIL TESTING AGENCY RECOMMENDATIONS.
 - 2.3. ALL TOPSOIL FOR THE INTENSIVE USE LAWN AREAS SHALL BE SANDY LOAM CLASS ONLY.
 - 2.4. TOPSOIL SHALL NOT BE MOVED, DELIVERED OR WORKED ON WHILE IN A FROZEN STATE OR CONDITION.
- 3.0. GROWING MEDIUM - PLANTING MIXES:
 - 3.1. PLANTING MIX (WHERE SPECIFIED) SHALL BE THOROUGHLY COMBINED PRIOR TO PLACEMENT IN PLANTING BED AREAS TO THE FOLLOWING PROPORTIONS: 4 PARTS APPROVED TOPSOIL, 1 PART COMPOST, 1 PART SCREENED PEAT MOSS AND AN APPLICATION OF HIGH PHOSPHORUS FERTILIZER (0-20-0).
 - 3.2. MIXES CONTAINING A SIGNIFICANT AMOUNT OF PEAT MOSS SHALL NOT BE PERMITTED TO DRY OUT. THE MOISTURE CONTENT OF THE PEAT MOSS AT THE TIME OF MIXING SHALL BE NOT LESS THAN 60% TO 70%.

4.0. FERTILIZER AND AMENDMENTS:

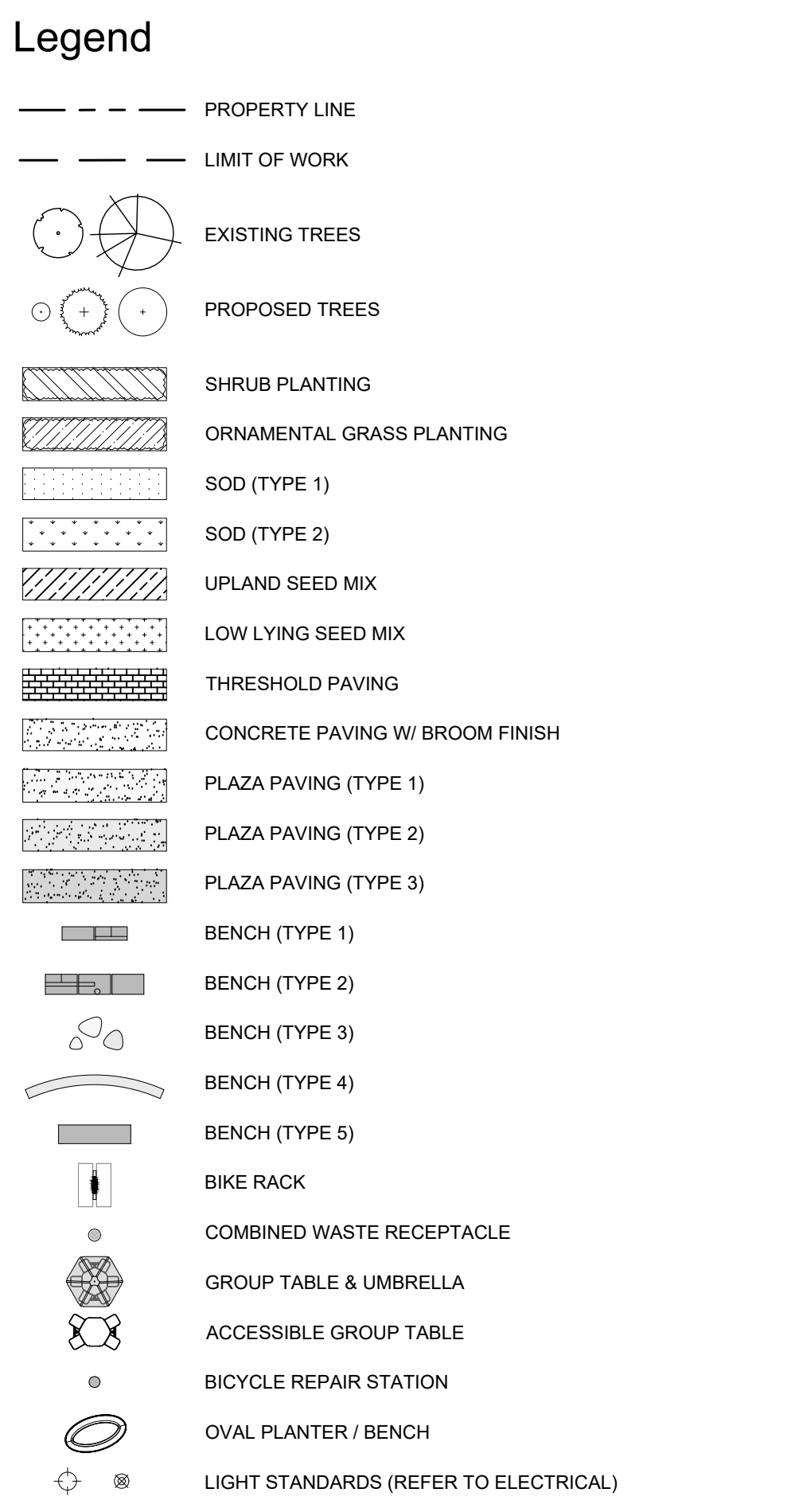
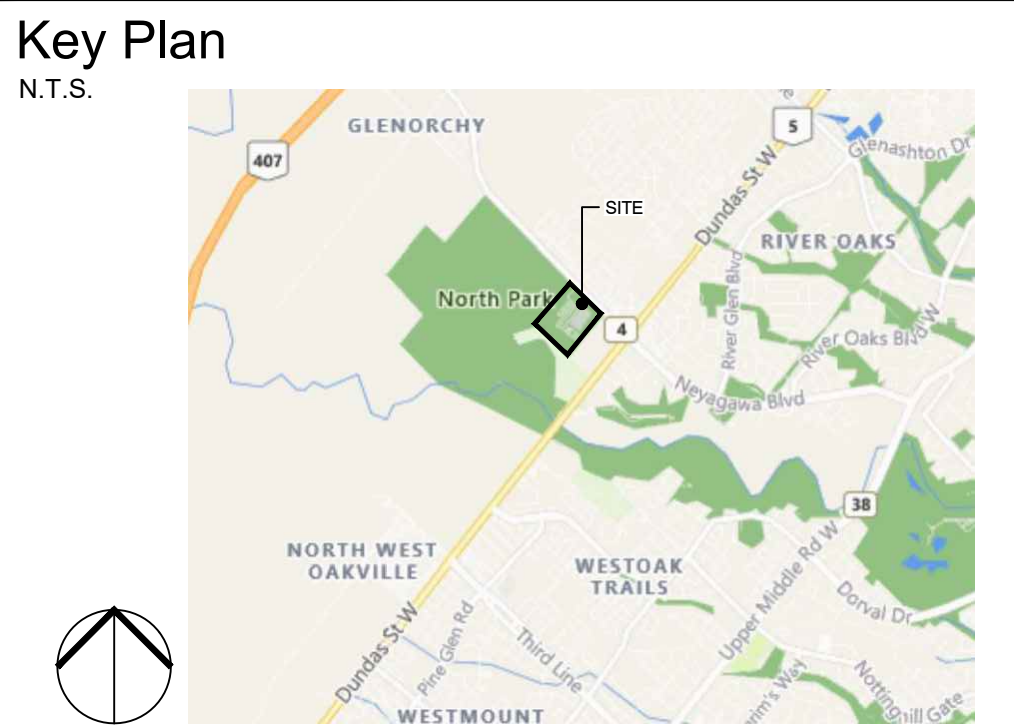
- 4.1. ORGANIC SOIL ADDITIVE: "GRO-BARK" FINE COMPOSTED PINE MULCH OR AN APPROVED ALTERNATIVE.
- 4.2. FERTILIZER: COMPLETE COMMERCIAL FERTILIZER WITH 50% OF THE ELEMENTS DERIVED FROM ORGANIC SOURCES.
- 4.3. PEAT MOSS: DECOMPOSED PLANT MATERIAL, FAIRLY ELASTIC AND HOMOGENOUS, FREE OF RECOMPOSED COLLOIDAL RESIDUE, WOOD, SUI-PHUR AND IRON AND OR BROWN COLOUR CONTAINING MINIMUM 6% ORGANIC MATTER BY WEIGHT, MOISTURE CONTENT NOT EXCEEDING 15% AND PH VALUE OF 3.4 - 5.5.
- 4.4. COMPOST AND MANURE: SHALL MEET THE STANDARDS FOUND IN THE INTERIM GUIDELINES FOR THE PRODUCTION AND USE OF AEROBIC COMPOST IN ONTARIO PUBLISHED BY THE ONTARIO MINISTRY OF ENVIRONMENT AND ENERGY (MEE), AND SHALL BE VERTICALLY FREE FROM ALL VALUABLE NURSERY STOCK, OR OTHER PLANT REPRODUCTIVE PARTS, PATHOGENS, CHEMICALS OR TOXIC CONTAMINANTS. MANURE SHALL BE WELL ROTTED, UNBLEACHED CATTLE MANURE, FREE FROM HARMFUL CHEMICALS AND OTHER NEUROLOGICAL SUBSTANCES, AT LEAST EIGHT MONTHS OLD, BUT NOT MORE THAN TWO YEARS OLD AND WITH NO MORE THAN 20% STRAW, LEAVES OR OTHER MATERIALS. PHYSICAL CONTAMINANTS SUCH AS ROCK, PLASTIC, METAL OR GLASS SHALL BE LESS THAN 0.5% TOTAL CARBON TO NITROGEN RATIO IN THE RESULTING GROWING MEDIUM SHALL NOT EXCEED 30:1.
- 4.5. LIMESTONE: LIME STONE CONTAINING NOT LESS THAN 8% OF CALCIUM AND MAGNESIUM CARBONATES COMBINED, FINELY GROUND TO PASS A 10 MESH SIEVE WITH AT LEAST ONE HALF PASSING A 100 MESH SIEVE. RATE OF APPLICATION SHALL BE DETERMINED AFTER THE PH OF THE TOPSOIL.
- 4.6. BOHEMIAL: RAW, FINELY GROUND WITH A MINIMUM ANALYSIS OF 4% NITROGEN AND 20% PHOSPHORIC ACID.
- 4.7. SAND: SHARP, CLEAN SAND, TO DSS 100-3.

UPLAND SEED MIXTURE:

1. TABLELAND PRAIRIE GRASS NATIVE SEED MIXTURE #165 BY OSC SEEDS OR APPROVED SUBSTITUTE
2. CONTAINS: BIG BLUESTEM (ANDRPOOON GARARDI), CANADA WILD RYE (ELYMUS CANADENSIS), INDIAN GRASS (SORGHASTRUM NOTARI), LITTLE BLUESTEM (SCHIZACHYRIUM SCOPARIUM), PRAIRIE CORDOGRASS (SPARTINA PECTINATA), SWITCHGRASS (PANICUM VIRGATUM) APPLY SEED MIXTURE AT 500 g/100 m² OR 25 g/m².
3. NURSE CROP TO BE SELECTED FROM CONSERVATION HALTONS LANDSCAPING AND TREE PRESERVATION GUIDELINES, APPENDIX 3. RECOMMENDED NURSE CROP SPECIES LIST SPECIES SELECTION TO BE BASED ON THE SPRING OR FALL SOWING, AND SUBMITTED FOR APPROVAL WITH THE UPLAND SEED MIXTURE.
4. NURSE CROP TO BE MIXED WITH TABLELAND PRAIRIE GRASS NATIVE SEED MIXTURE PRIOR TO APPLICATION.
5. TO BE APPLIED WITH TERRA-SEEDING AS PER SPECIFICATION.

LOW LYING SEED MIXTURE:

1. SEASONALLY FLOODED NATIVE SEED MIXTURE #240 BY OSC SEEDS OR APPROVED SUBSTITUTE
2. CONTAINS: DEER TONGUE (PANDUM CLANDESTINUM), FOWL BLUEGRASS (POA CALMIDRIS), FOX SEDGE (CAREX VULPINOIDEA), WOODING BUR MARSHLO (BIEDENS CERNUAL), OX EYE SUNFLOWER (HELIANTHUS HELIANTHOIDES), SWITCHGRASS (PANICUM VIRGATUM), VIRGINIA WILD RYE (ELYMUS VIRGINICUS). APPLY SEED MIXTURE AT 500 g/100 m² OR 25 g/m².
3. NURSE CROP TO BE SELECTED FROM CONSERVATION HALTONS LANDSCAPING AND TREE PRESERVATION GUIDELINES, APPENDIX 3. RECOMMENDED NURSE CROP SPECIES LIST SPECIES SELECTION TO BE BASED ON THE SPRING OR FALL SOWING, AND SUBMITTED FOR APPROVAL WITH THE LOW LYING SEED MIXTURE.
4. NURSE CROP TO BE MIXED WITH SEASONALLY FLOODED NATIVE SEED MIXTURE PRIOR TO APPLICATION.
5. PREPARE SEED MIXTURE WITH PLANTING SOL AND APPLY TERRA-SEEDING AS PER SPECIFICATION.



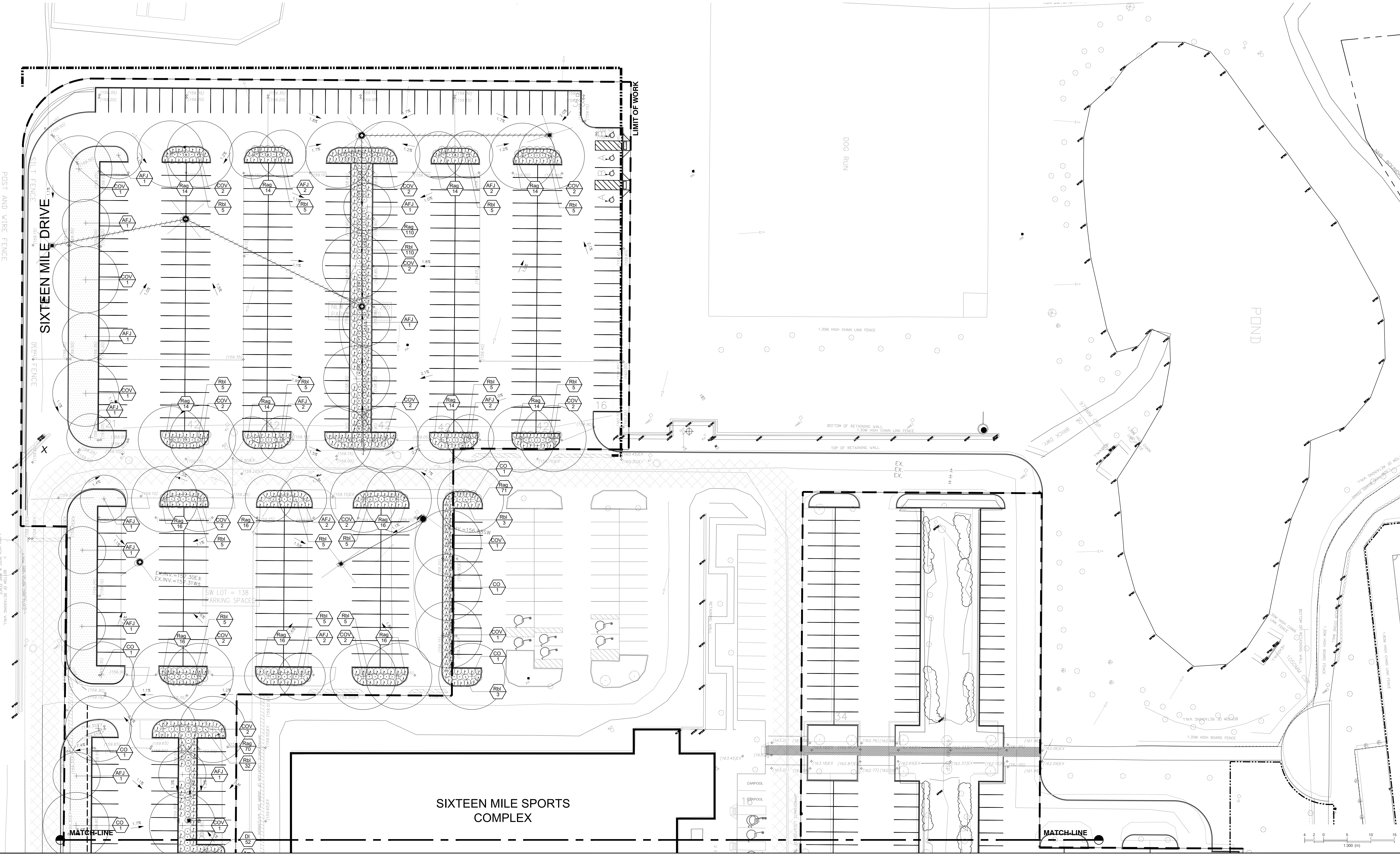
- GENERAL NOTES:**
1. Drawings not to be used for construction unless authorized by the Landscape Architect.
 2. Contractor shall report any discrepancies between the drawings and site conditions prior to commencement of the work.
 3. All utility locations are the responsibility of the Contractor. Hand dig within the limits recommended by the service utility. Utility conflicts with proposed tree locations must be reported immediately to the Landscape Architect.
 4. Sixteen Mile Community Centre & Library base drawing provided by Diamond Schmitt Architects.
 5. For Sixteen Mile Community Centre grading information refer to drawing by MTE Consultants.
 6. North Park Sports Park base drawings provided by The MBTW Group.
 7. Landscape drawings show engineering information for design purposes only. Do not construct engineering works from these drawings.

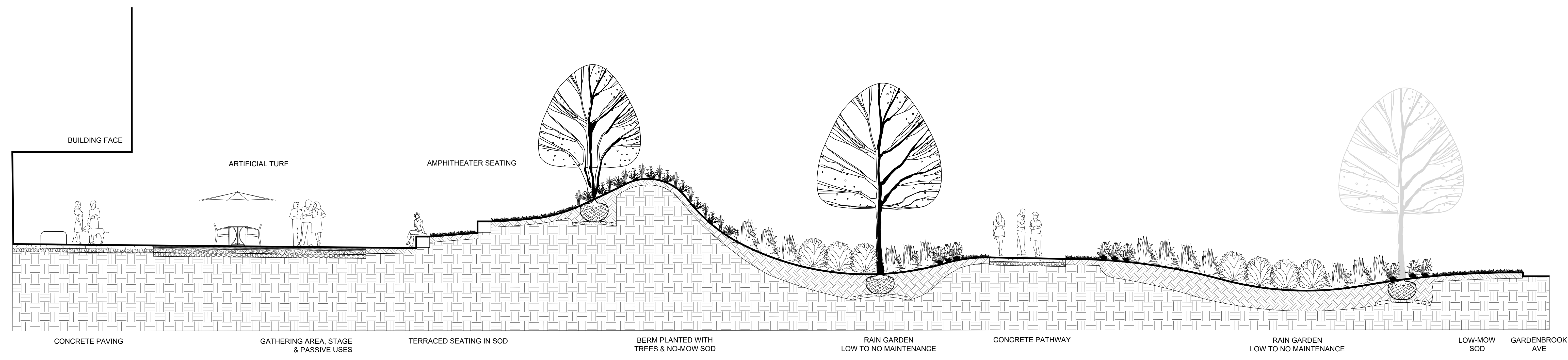
PLANTING PLAN AREA B
North Park Development: Community Centre, Library and Sports Park, Oakville, ON

DATE	ISSUE	BY
Feb 4 2022	Issued for Site Plan Application 1	BR
June 10 2022	Issued for Site Plan Application 2	BR
July 11 2022	Issued for 30% CD	JH
Sept 12 2022	Issued for Committee of Adjustments	MZ
Sept 22 2022	Issued for 60% CD	MZ
Nov 14 2022	Issued for Tender	MZ
Dec 15 2022	Issued for Site Plan Application 3	MZ

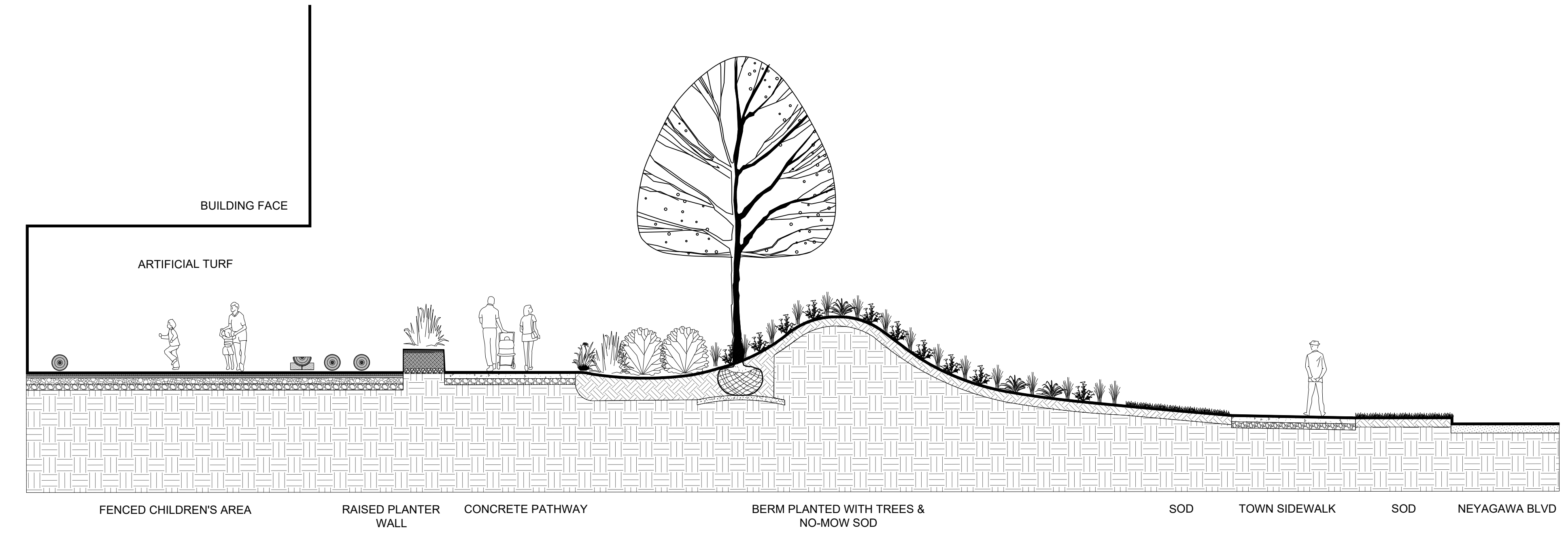
DATE	REVISIONS	BY
Jan 27 2022	Issued for Coordination	BR
May 2 2022	Issued for Coordination	MZ

L1.41

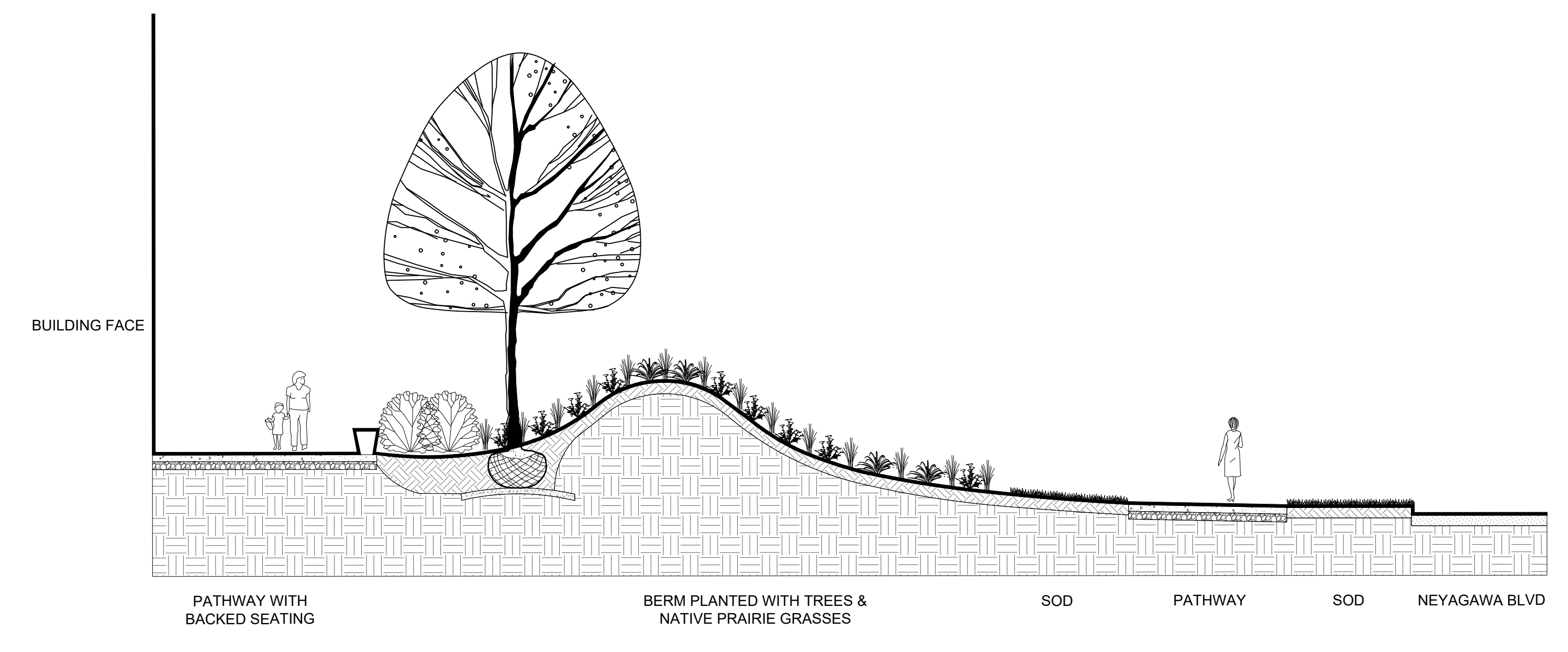




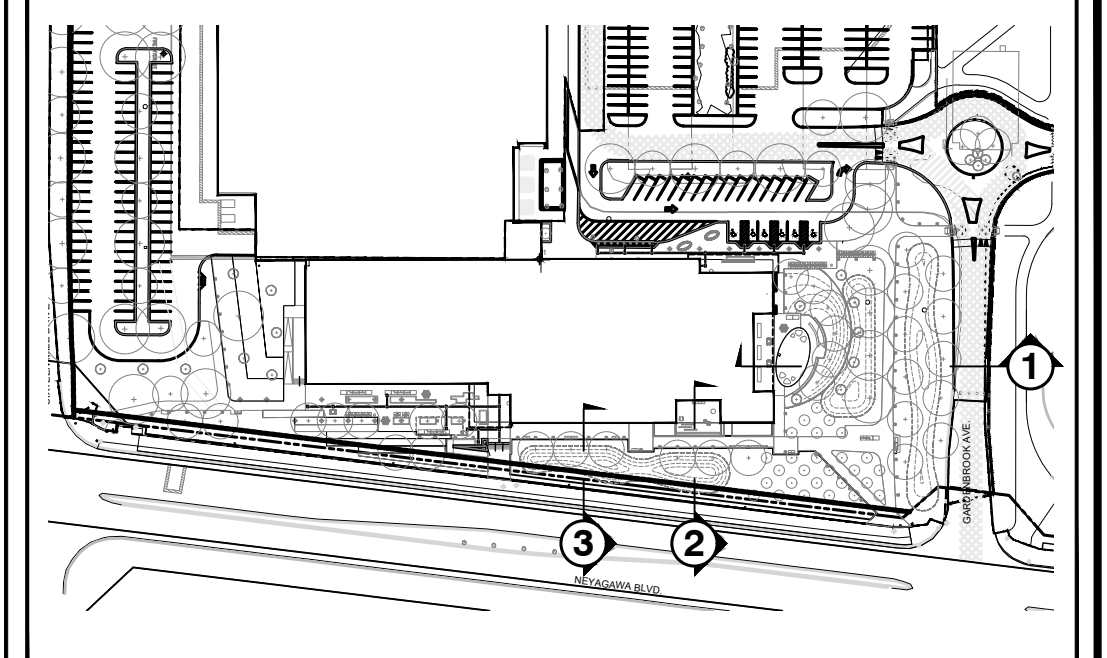
1 WEST SECTION
1:75



2 NORTH SECTION 1



3 NORTH SECTION 2



Legend

- GENERAL NOTES:**
- Drawings not to be used for construction unless authorized by the Landscape Architect.
 - Contractor shall report any discrepancies between the drawings and site conditions prior to commencement of the work.
 - All utility locates are the responsibility of the Contractor. Hand dig within the limits recommended by the service utility. Utility conflicts with proposed tree locations must be reported immediately to the Landscape Architect.
 - Sixteen Mile Community Centre & Library base drawing provided by Diamond Schmitt Architects.
 - For Sixteen Mile Community Centre grading information refer to drawing by MTE Consultants.
 - North Park Sports Park base drawings provided by The MBTW Group.
 - Landscape drawings show engineering information for design purposes only. Do not construct engineering works from these drawings.

LANDSCAPE SECTIONS

North Park Development: Community Centre,
Library and Sports Park, Oakville, ON



DATE	ISSUE	BY
Feb 4 2022	Issued for Site Plan Application 1	MZ
June 10 2022	Issued for Site Plan Application 2	SI
July 11 2022	Issued for 30% CD	JH
Sept 12 2022	Issued for Committee of Adjustments	MZ
Sept 28 2022	Issued for 60% CD	MZ
Nov 14 2022	Issued for Tender	MZ
Dec 15 2022	Issued for Site Plan Application 3	MZ

DATE	REVISIONS	BY
Dec 22, 2021	Issued for Review	SI
Jan 27 2022	Issued for Coordination	SI
May 2 2022	Issued for Coordination	MZ

GSP group

11 Stoney Creek Drive, Suite 201
Stoney Creek, Ontario L3R 9W8
1-877-888-8888

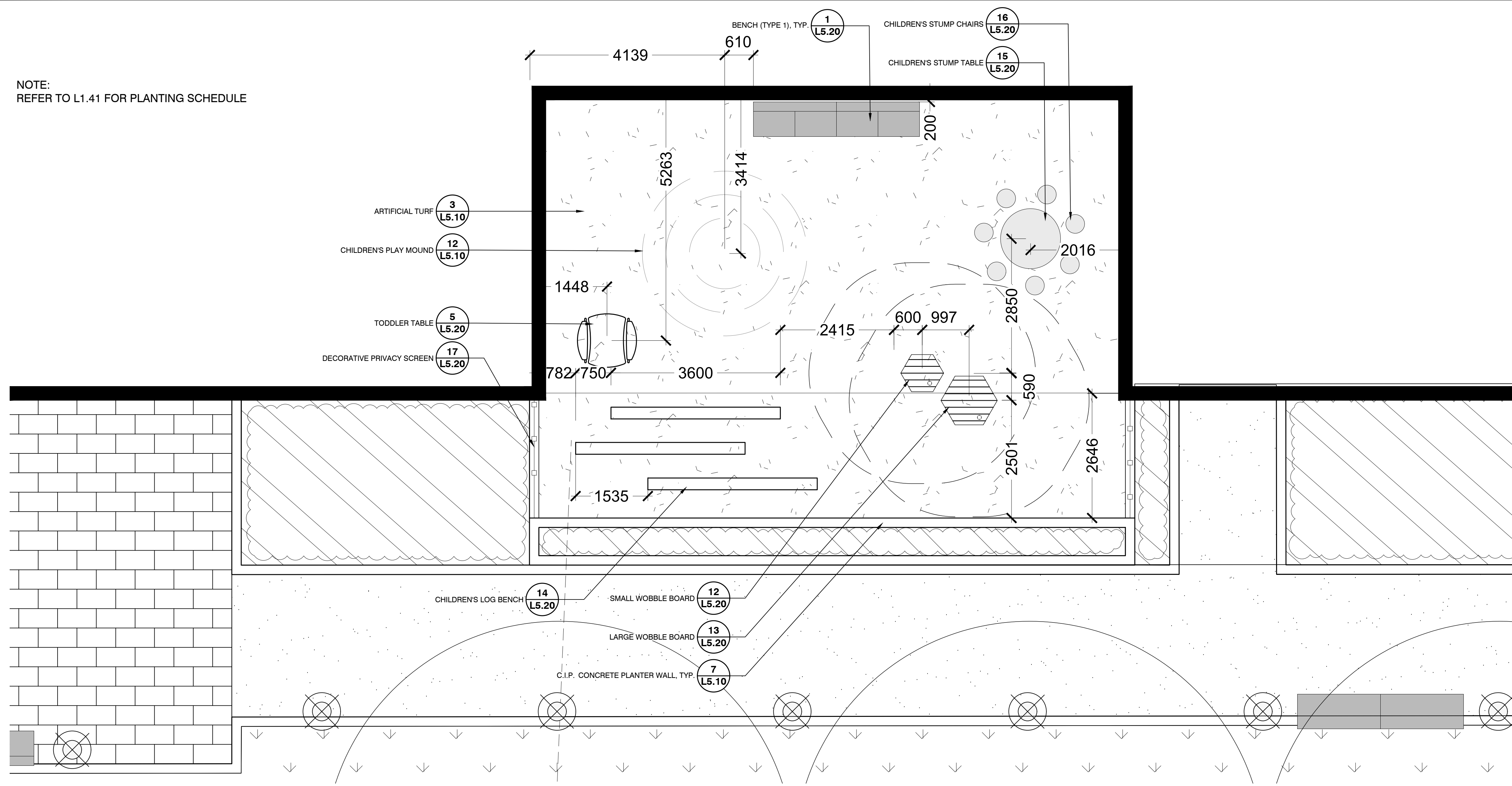
100 West Beaver Creek, Suite 200
Richmond Hill, Ontario L4B 1N7
www.gspgroup.ca

Date: June 2022
Scale: AS SHOWN

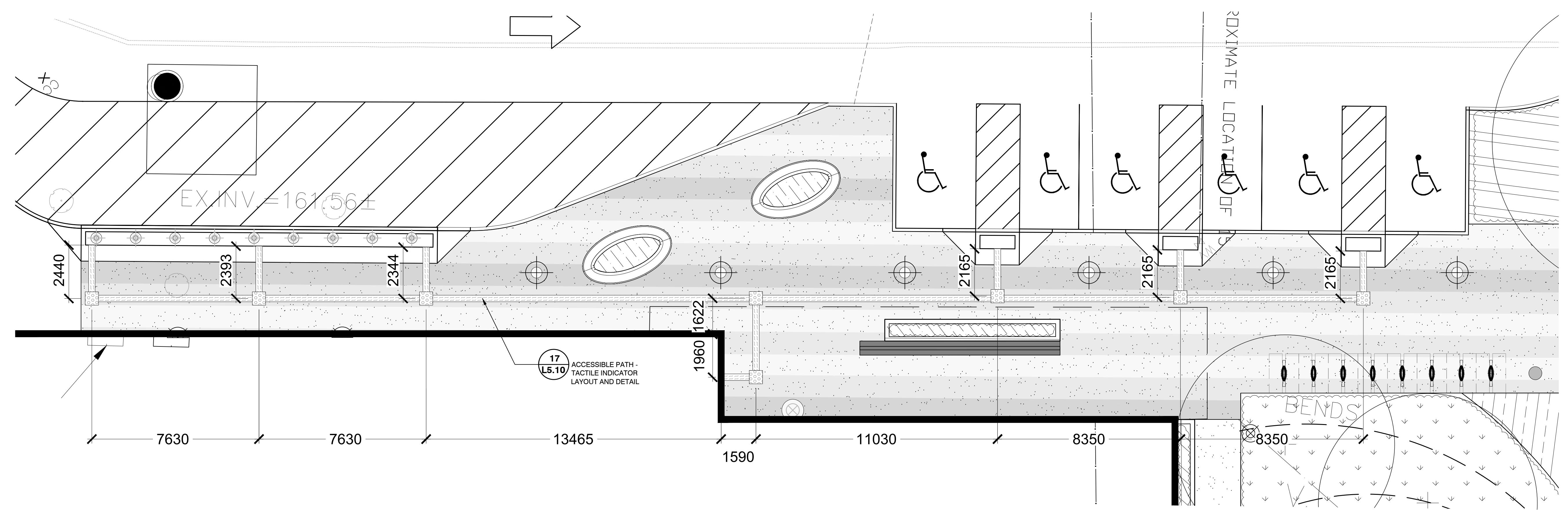
Drawn By: MZ, SI
Project No.: 21337

L2.00

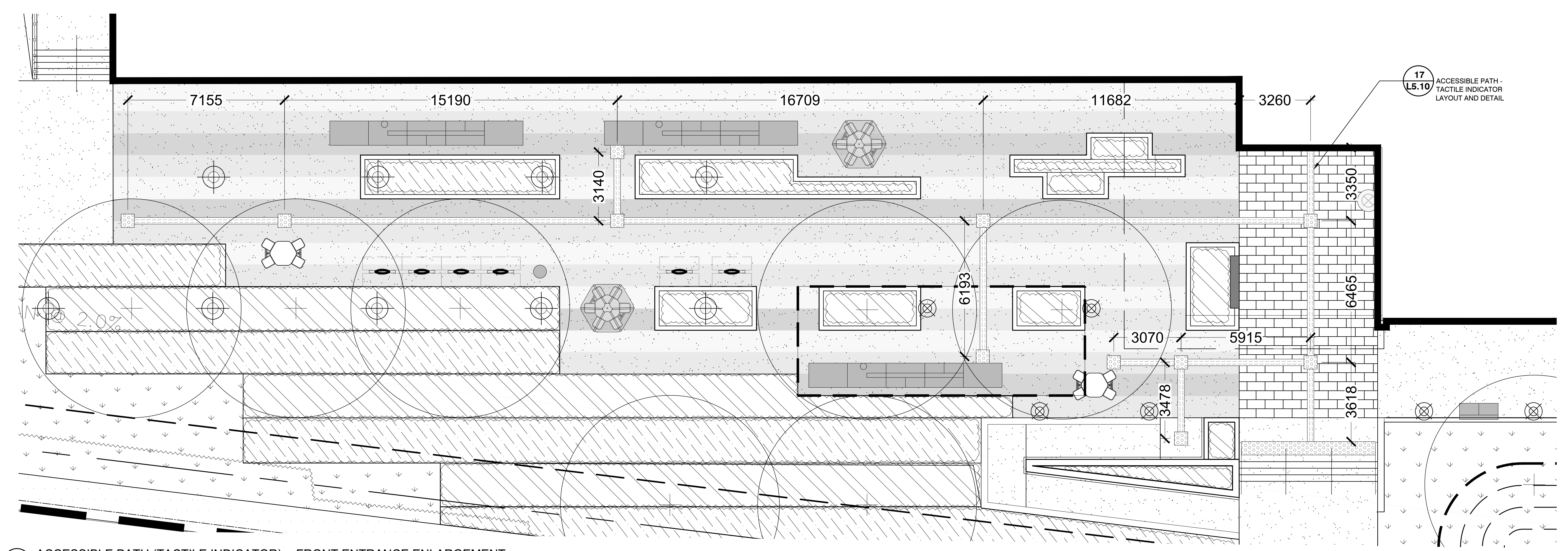
NOTE:
REFER TO L1.41 FOR PLANTING SCHEDULE



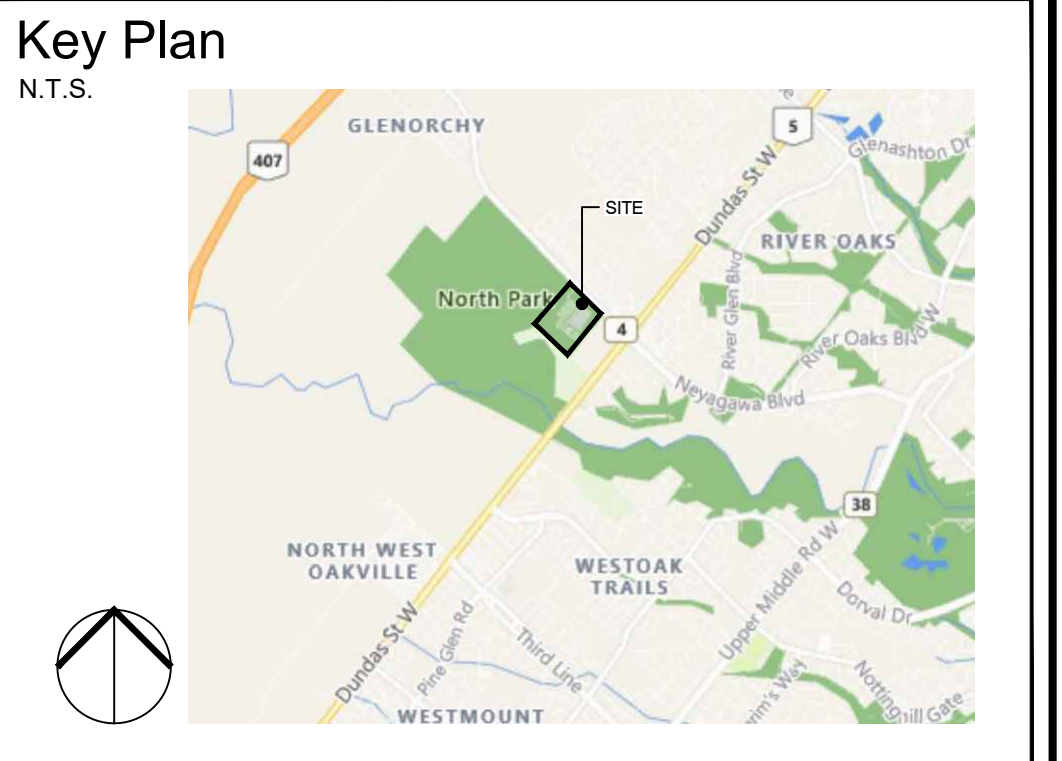
1 CHILDREN'S PLAY AREA ENLARGEMENT
Scale 1:50



2 ACCESSIBLE PATH (TACTILE INDICATOR) - MAIN ENTRANCE ENLARGEMENT
Scale 1:100



3 ACCESSIBLE PATH (TACTILE INDICATOR) - FRONT ENTRANCE ENLARGEMENT
Scale 1:100



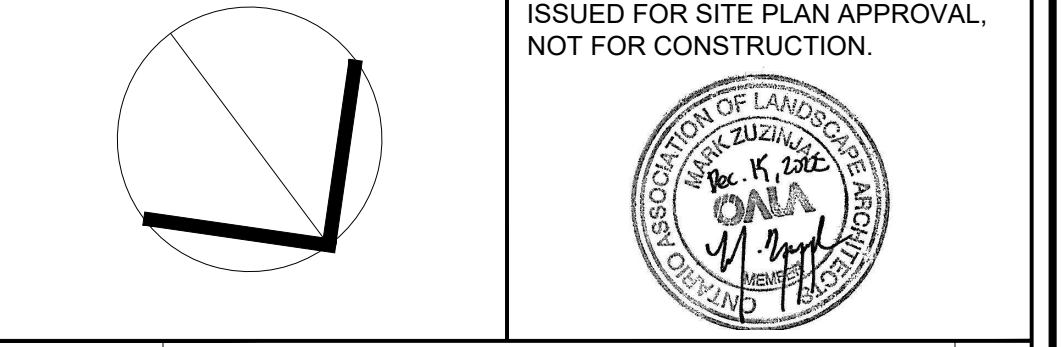
Legend

GENERAL NOTES:

- Drawings not to be used for construction unless authorized by the Landscape Architect.
- Contractor shall report any discrepancies between the drawings and site conditions prior to commencement of the work.
- All utility locates are the responsibility of the Contractor. Hand dig within the limits recommended by the service utility. Utility conflicts with proposed tree locations must be reported immediately to the Landscape Architect.
- Sixteen Mile Community Centre & Library base drawing provided by Diamond Schmitt Architects.
- For Sixteen Mile Community Centre grading information refer to drawing by MTE Consultants.
- North Park Sports Park base drawings provided by The MBTW Group.
- Landscape drawings show engineering information for design purposes only. Do not construct engineering works from these drawings.

LANDSCAPE ENLARGEMENTS

North Park Development: Community Centre, Library and Sports Park, Oakville, ON



DATE	ISSUE	BY
June 10 2022	Issued for Site Plan Application 2	MZ
July 11 2022	Issued for 30% CD	JH
Sept 12 2022	Issued for Committee of Adjustments	MZ
Sept 21 2022	Issued for 60% CD	MZ
Nov 14 2022	Issued for Tender	MZ
Dec 15 2022	Issued for Site Plan Application 3	MZ

DATE	REVISIONS	BY
Jan 27 2022	Issued for Coordination	ER
May 2 2022	Issued for Coordination	MZ

GSP group

15000 Steeles Ave. East, Suite 201
 Markham, Ontario L3R 0K9
 1-877-888-8888

100 West Beaver Creek, Suite 200
 Richmond Hill, Ontario L4B 1N7
 905-882-8888

www.gspgroup.ca

Date: June 2022
 Scale: AS SHOWN
 Project No: 21537

Drawn By: MZ: BR

L4.00