

PLANT SUMMARY

REFER TO DETAIL SHEETS FOR FULL PLANT LIST

DECIDUOUS TREES

KEY	BOTANICAL NAME	COMMON NAME
AF60	<i>Acer x freemanii</i> 'Armstrong'	Armstrong Maple
AR60	<i>Acer rubrum</i>	Red Maple
CO60	<i>Celtis occidentalis</i>	Hickberry
GR60	<i>Ginkgo biloba</i> 'Princeton Sentry'	Princeton Sentry Ginkgo
SK60	<i>Gleditsia triacanthos</i> 'Skyline'	Skyline Honeylocust
TL60	<i>Liriodendron tulipifera</i>	Tulip Tree
OV60	<i>Ostrya virginiana</i>	Ironwood
PAB60	<i>Platanus x acerifolia</i> 'Bloodgood'	Bloodgood London Planetree
PC60	<i>Pyrus calleryana</i> 'Dien's Farm'	Charicleer Ornamental Pear
PC60	<i>Pyrus calleryana</i> 'Redspire'	Redspire Ornamental Pear
QO60	<i>Quercus macrocarpa</i>	Bur Oak
ORU60	<i>Quercus rubra</i>	Red Oak
SR60	<i>Syringa reticulata</i> 'Ivory Silk'	Ivory Silk Tree Lilac
TA60	<i>Tilia americana</i>	Blosswood
ZS60	<i>Zakona serrata</i> 'Green Vase'	Green Vase Zelkova

CONIFEROUS TREES

KEY	BOTANICAL NAME	COMMON NAME
PG200	<i>Picea glauca</i>	White Spruce
PPC200	<i>Picea pungens</i> 'Glaucosa'	Colorado Blue Spruce
PSY200	<i>Pinus sylvestris</i>	Scots Pine

DECIDUOUS SHRUBS

KEY	BOTANICAL NAME	COMMON NAME
HA60	<i>Hydrangea arborescens</i> 'Annabelle'	Annabelle Hydrangea
PF60	<i>Potentilla fruticosa</i> 'Goldfinger'	Goldfinger Potentilla
RAC60	<i>Rhus aromatica</i> 'Gro-Low'	Dwarf Fragrant Sumac
SB60	<i>Spiraea x bumalda</i> 'Anthony Waterer'	Anthony Waterer Spiraea
SB60	<i>Spiraea x bumalda</i> 'Goldflame'	Goldflame Spiraea

CONIFEROUS SHRUBS

KEY	BOTANICAL NAME	COMMON NAME
TMS0	<i>Taxus x media</i> 'Densiformis'	Dense Yew

BROADLEAF EVERGREEN SHRUBS

KEY	BOTANICAL NAME	COMMON NAME
BM60	<i>Buxus microphylla</i> 'Green Mountain'	Green Mountain Boxwood
EF60	<i>Eunonymus fortunei</i> 'Coloratus'	Coloratus Euonymus

PERENNIALS AND GROUNDCOVERS

KEY	BOTANICAL NAME	COMMON NAME
GMA	<i>Ceranium maculatum</i>	Wild Ceranium
HSD	<i>Hemerocallis</i> 'Stella D'Oro'	Stella D'Oro Daylily
PAT	<i>Perovskia atriplicifolia</i>	Russian Sage

GRASSES

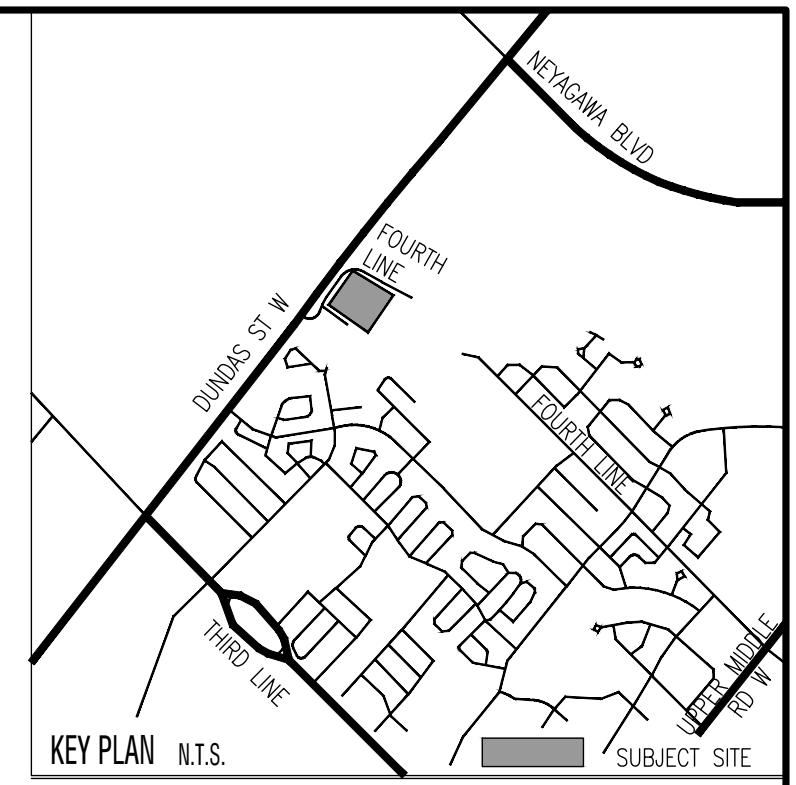
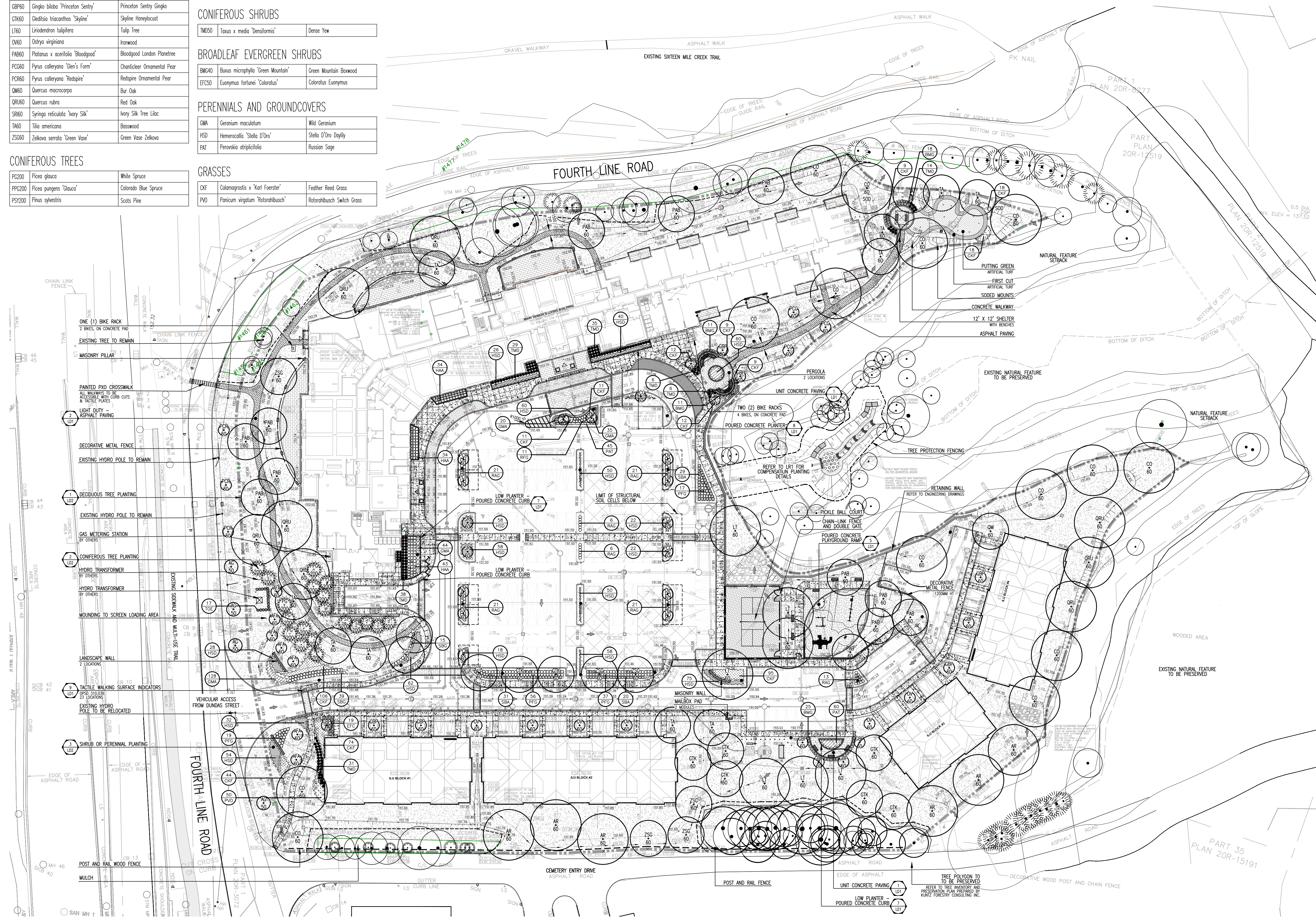
KEY	BOTANICAL NAME	COMMON NAME
CKF	<i>Calamagrostis</i> x 'Karl Foerster'	Feather Reed Grass
PVO	<i>Panicum virgatum</i> 'Rotstrawbush'	Rotstrawbush Switch Grass

STREET TREES

REFER TO DETAIL SHEETS FOR FULL PLANT LIST

DECIDUOUS TREES

KEY	BOTANICAL NAME	COMMON NAME
A60	<i>Acer ginnala</i>	Amur Maple
PC60	<i>Pyrus calleryana</i> 'Redspire'	Redspire Ornamental Pear



LEGEND

- PROPERTY LINE
- DEVELOPMENT LIMIT
- CHAIN LINK FENCE
- DECORATIVE METAL FENCE
- POST AND RAIL WOOD FENCE
- TREE PROTECTION FENCE
- UNIT CONCRETE PAVING
- ASPHALT PAVING
- CONCRETE PAVING
- PROTECTIVE SURFACING
- SOD PLANTING/ MULCH
- DECIDUOUS TREE PLANTING
- CONIFEROUS TREE PLANTING
- DECIDUOUS SHRUBS PLANTING (SMALL)
- CONIFEROUS SHRUBS PLANTING (SMALL)
- BROADLEAF EVERGREEN SHRUBS PLANTING
- SHRUB OR PERENNIAL PLANTING
- EXISTING DECIDUOUS TREE TO REMAIN
- EXISTING CONIFEROUS TREE TO REMAIN
- EXISTING TREE POLYGON TO REMAIN
- PLANT QUANTITY
- PLANT KEY
- DETAIL NUMBER
- DETAIL KEY
- DRAWING NUMBER
- LIGHT POLE
- LIGHT BOLLARD
- LUMINAIRES

Base Information

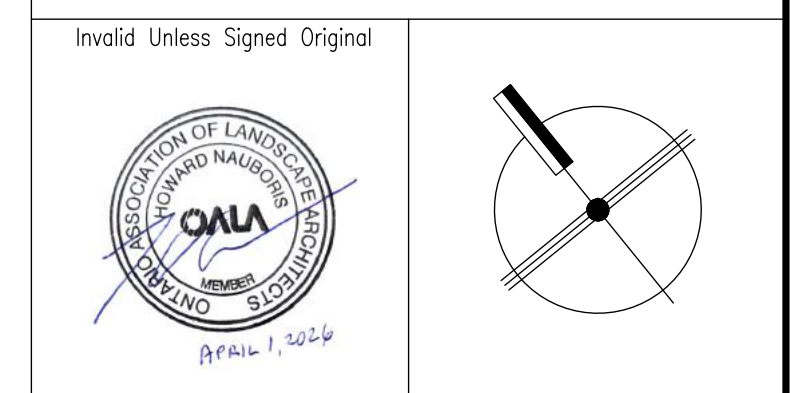
Architectural base information received in digital format from Icke Brochu Architects Inc., Project No.17.23, Drawing No. A301 dated and received March 05, 2026.

Grading and servicing information received in digital format from R.V. Anderson Associates Limited, Project No. 195028, drawings dated and received April 02, 2026.

Lighting plan received in digital format from Satek Inc., Project No. A22176, drawings dated and received March 06, 2026.

No	Revision	By	Yr	Mo	Da	
2	Issued for SPA		DP	26	04	01
a	Constraints Redlined for Discussion		MB	23	02	27
1	Issued for SPA		MB	22	10	27
No	Revision		By	Yr	Mo	Da

All drawings and designs are the property of Cosburn Nauroris Limited and may not be used or reproduced without permission. This drawing must not be scaled.



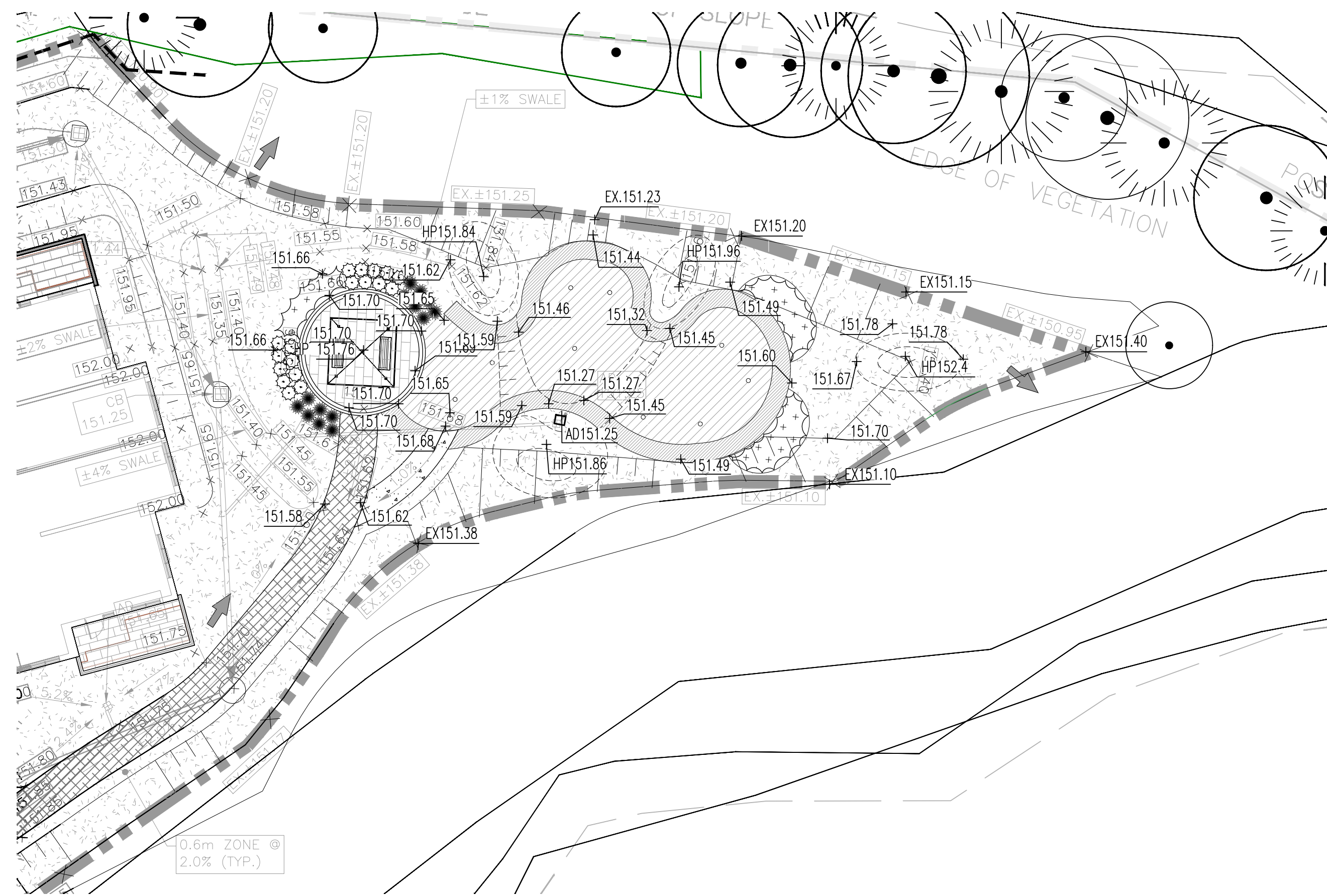
cosburn nauroris LTD
landscape architects
2500 - 2580 FOURTH LINE
TOWN OF OAKVILLE
DELMANOR WEST OAK INC.

LANDSCAPE PLAN

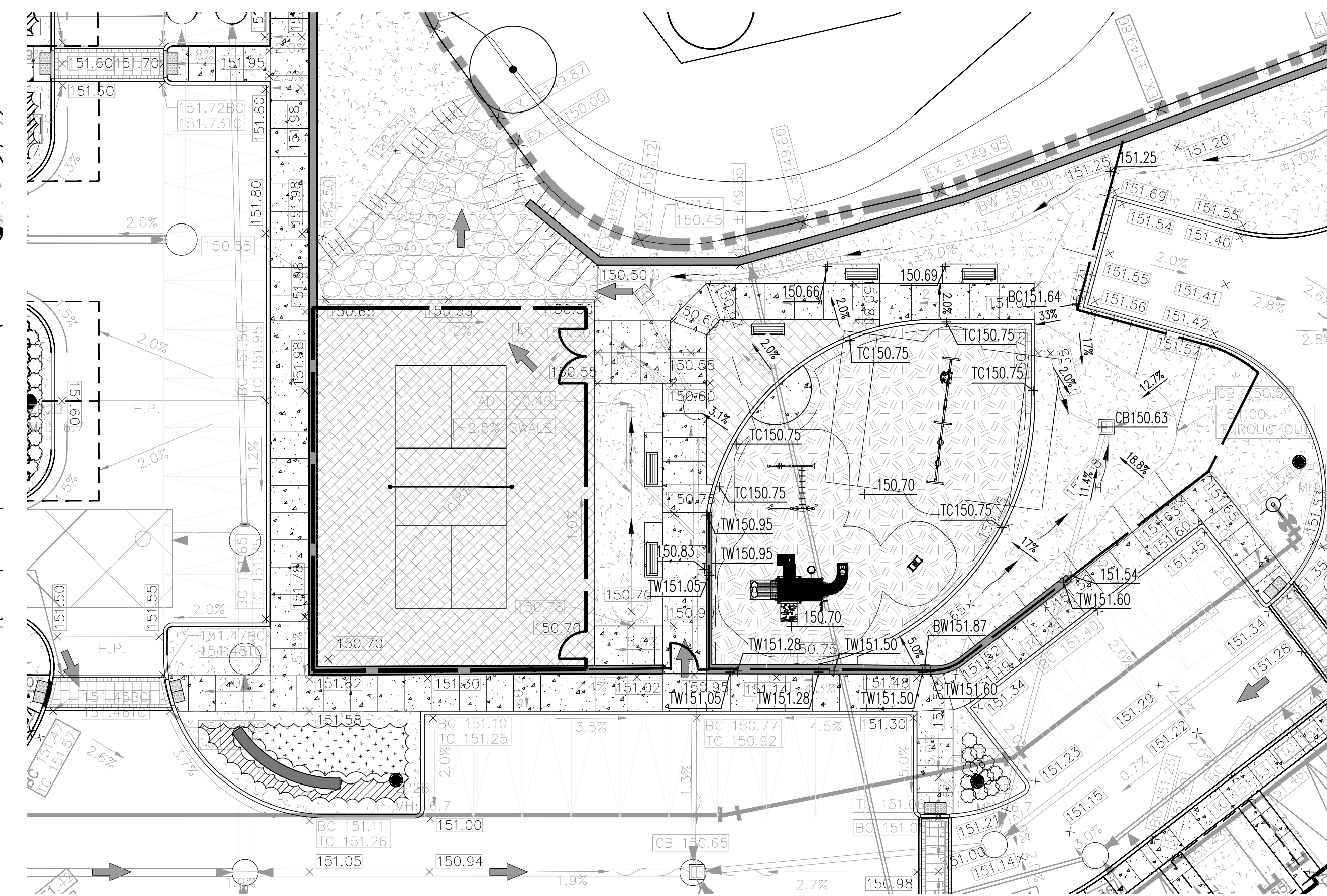
Drawn by	MB	Scale	1:500
Checked by	HN	Plot Date	2026-05-07
Approved by	HN	Project	2316

L1

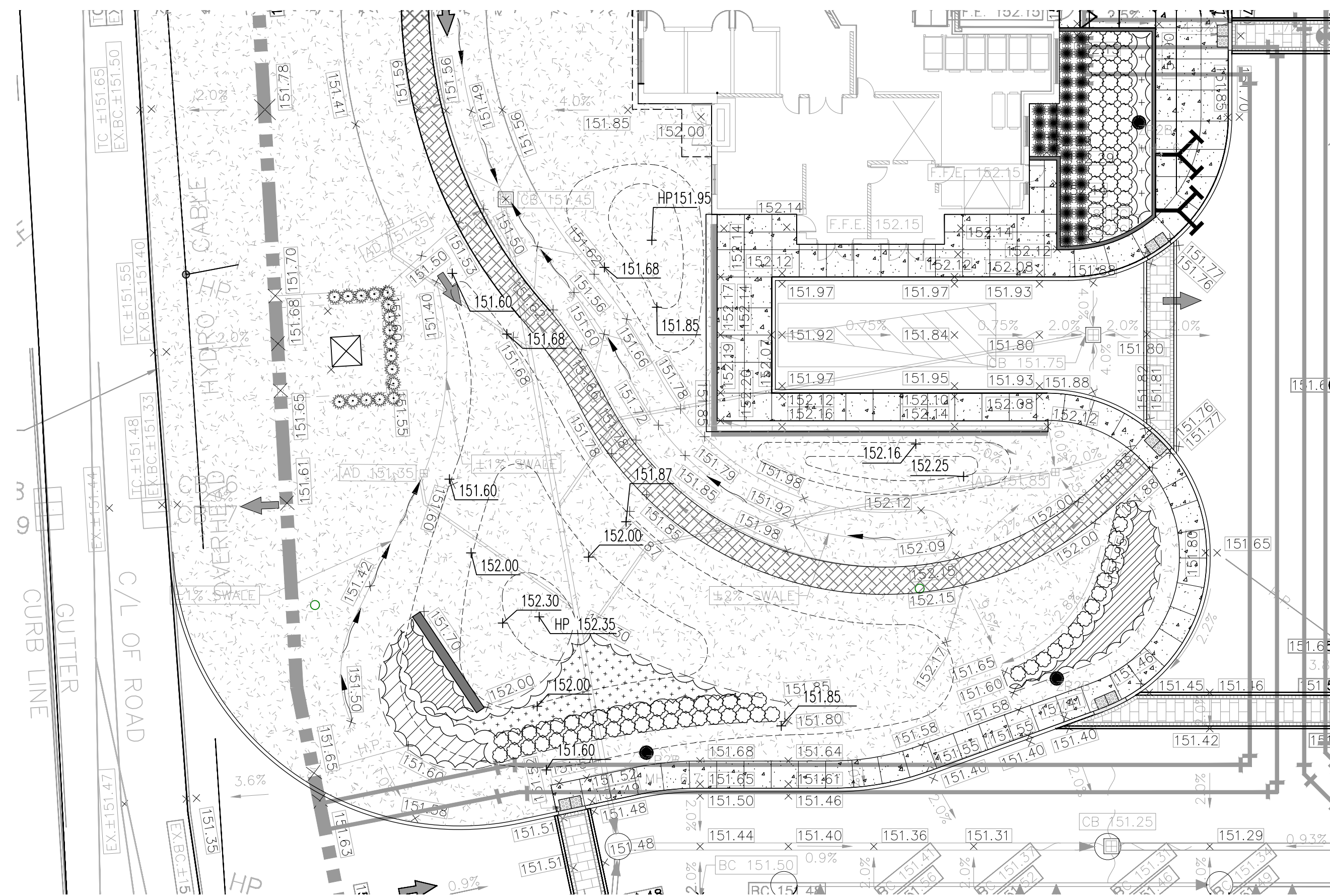
Drawing No.



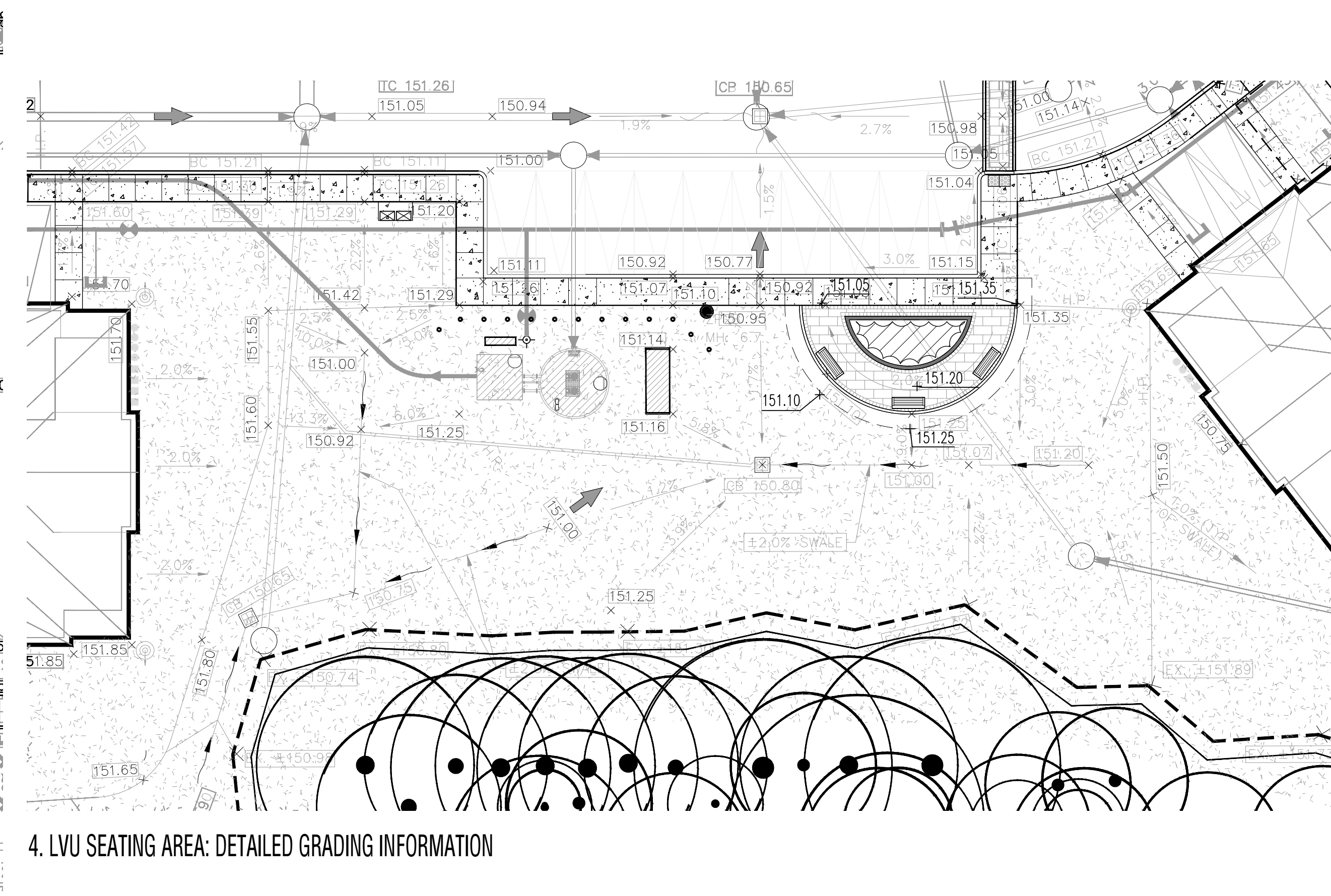
1. PUTTING GREEN: DETAILED GRADING INFORMATION



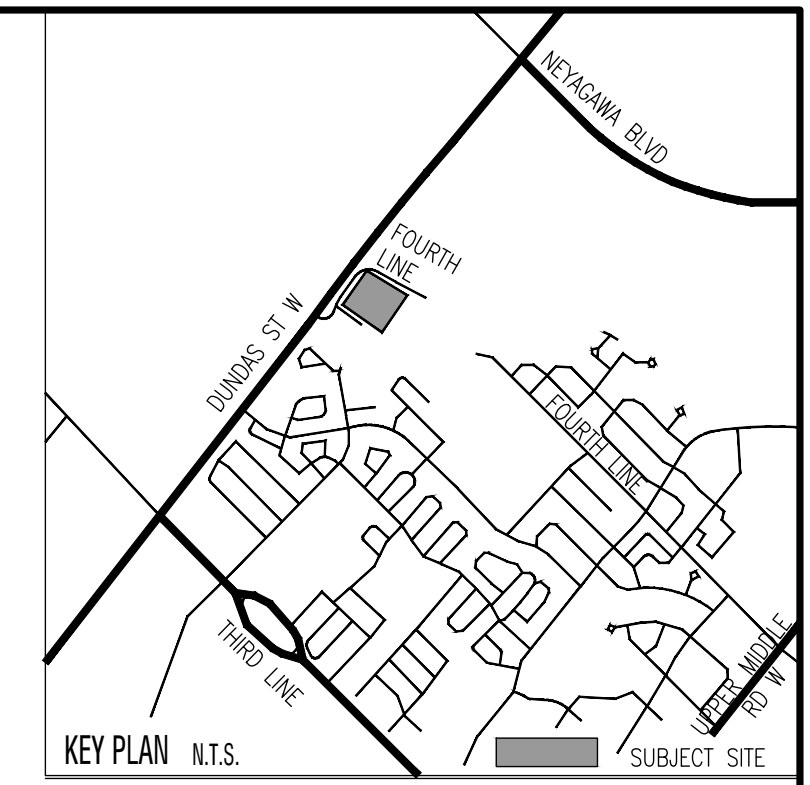
2. AMENITY SPACE: DETAIL GRADING INFORMATION



3. MAIN ENTRANCE: DETAILED GRADING INFORMATION



4. LVU SEATING AREA: DETAILED GRADING INFORMATION



LEGEND

- PROPERTY LINE
- DEVELOPMENT LIMIT
- CHAIN LINK FENCE
- DECORATIVE METAL FENCE
- POST AND RAIL WOOD FENCE
- TREE PROTECTION FENCE
- UNIT CONCRETE PAVING
- ASPHALT PAVING
- CONCRETE PAVING
- PROTECTIVE SURFACING
- SOD PLANTING
- DECIDUOUS TREE PLANTING
- LIMIT OF SOIL CELLS BELOW
- CONIFEROUS TREE PLANTING
- DECIDUOUS SHRUBS PLANTING (SMALL)
- CONIFEROUS SHRUBS PLANTING (SMALL)
- BROADLEAF EVERGREEN SHRUBS PLANTING
- SHRUB OR PERENNIAL PLANTING
- EXISTING DECIDUOUS TREE TO REMAIN
- REFER TO TREE INVENTORY AND PRESERVATION PLAN PREPARED BY KINTZ FORESTRY CONSULTING INC.
- EXISTING CONIFEROUS TREE TO REMAIN
- REFER TO TREE INVENTORY AND PRESERVATION PLAN PREPARED BY KINTZ FORESTRY CONSULTING INC.
- EXISTING TREE POLYGON TO REMAIN
- REFER TO TREE INVENTORY AND PRESERVATION PLAN PREPARED BY KINTZ FORESTRY CONSULTING INC.
- PLANT QUANTITY
- PLANT KEY
- PLANT SPECIES
- DETAIL NUMBER
- DETAIL KEY
- DRAWING NUMBER
- LIGHT POLE
- LIGHT BOLLARD
- LUMINAIRES
- REFER TO LIGHTING PLAN PREPARED BY SALEY INC.

Base Information

Architectural base information received in digital format from Icke Brochu Architects Inc., Project No.17.23, Drawing No. A301 dated and received March 05, 2026.

Grading and servicing information received in digital format from R.V. Anderson Associates Limited, Project No. 195028, drawings dated and received April 02, 2026.

Lighting plan received in digital format from Saaley Inc., Project No. A22176, drawings dated and received March 06, 2026.

2	Issued for SPA	DP	26 04 01
a	Constraints Redlined for Discussion	MB	23 02 27
1	Issued for SPA	MB	22 10 27
No	Revision	By	Yr Mo Da

All drawings and designs are the property of Cosburn Nauboris Limited and may not be used or reproduced without permission. This drawing must not be scaled.

Invalid Unless Signed Original

cosburn nauboris LANDSCAPE ARCHITECTS

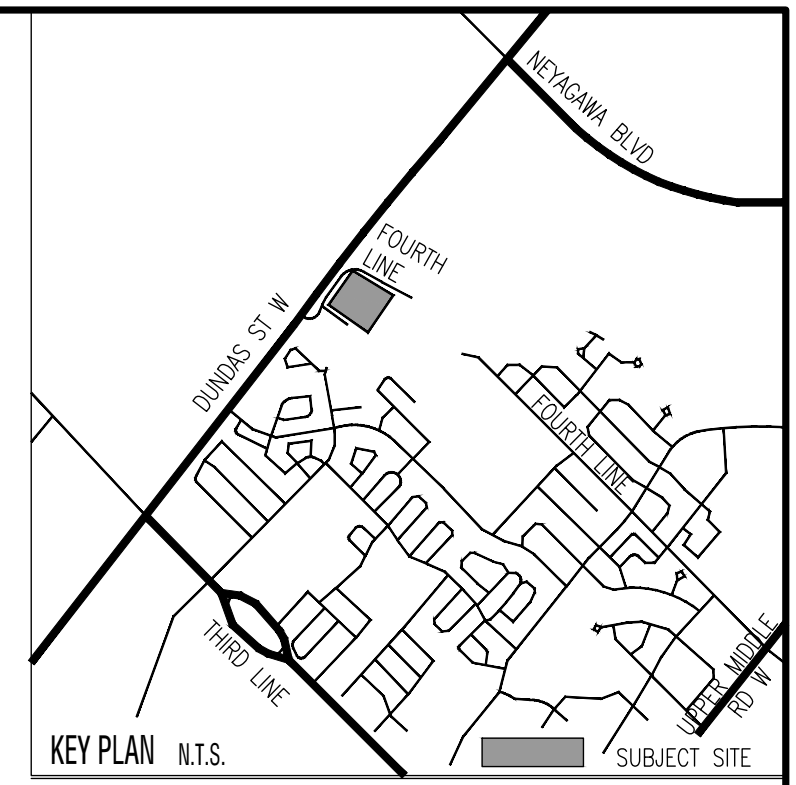
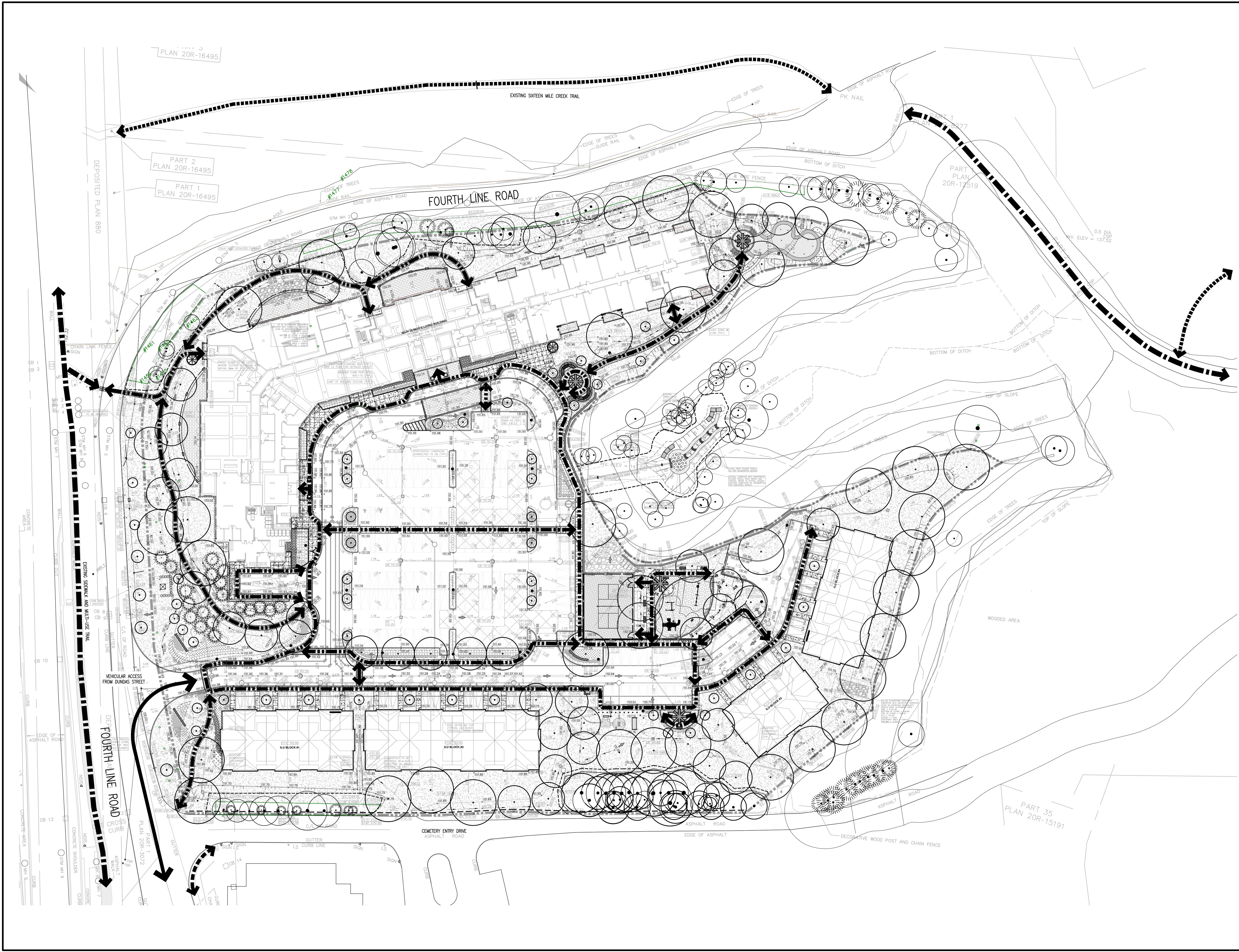
20 crown steel or. plates 2" x 12" on 13" x 9" x 1/4" x 1/4"

OAKVILLE SENIOR RESIDENCE
2500 - 2580 FOURTH LINE
TOWN OF OAKVILLE
DELMANOR WEST OAK INC.

DETAILED GRADING INFORMATION

Drawn by	MB	Scale	1:500
Checked by	HN	Plot Date	2026-05-07
Approved by	HN	Project	2316

L1.1
Drawing No.



- LEGEND**
- PROPERTY LINE
 - DEVELOPMENT LIMIT
 - CHAIN LINK FENCE
 - DECORATIVE METAL FENCE
 - POST AND RAIL WOOD FENCE
 - TREE PROTECTION FENCE
 - UNIT CONCRETE PAVING
 - ASPHALT PAVING
 - CONCRETE PAVING
 - PROTECTIVE SURFACING
 - SOD PLANTING
 - DECIDUOUS TREE PLANTING
 - LIMIT OF SOIL CELLS BELOW
 - CONIFEROUS TREE PLANTING
 - DECIDUOUS SHRUBS PLANTING (SMALL)
 - CONIFEROUS SHRUBS PLANTING (SMALL)
 - BROADLEAF EVERGREEN SHRUBS PLANTING
 - SHRUB OR PERENNIAL PLANTING
 - EXISTING DECIDUOUS TREE TO REMAIN
REFER TO TREE INVENTORY AND PRESERVATION PLAN
PREPARED BY KINTZ FORESTRY CONSULTING INC.
 - EXISTING CONIFEROUS TREE TO REMAIN
REFER TO TREE INVENTORY AND PRESERVATION PLAN
PREPARED BY KINTZ FORESTRY CONSULTING INC.
 - EXISTING TREE POLYGON TO REMAIN
REFER TO TREE INVENTORY AND PRESERVATION PLAN
PREPARED BY KINTZ FORESTRY CONSULTING INC.
 - PLANT QUANTITY
 - PLANT KEY
 - DETAIL NUMBER
 - DETAIL KEY
 - DRAWING NUMBER
 - LIGHT POLE
 - LIGHT BOLLARD
 - LUMINAIRES
REFER TO LIGHTING PLAN PREPARED BY SALEY INC.

Base Information

Architectural base information received in digital format from Icke Brochu Architects Inc., Project No.17.23, Drawing No. A301 dated and received March 05, 2026.

Grading and servicing information received in digital format from R.V. Anderson Associates Limited, Project No. 195028, drawings dated and received April 02, 2026.

Lighting plan received in digital format from Saaley Inc., Project No. A22178, drawings dated and received March 06, 2026.

2	Issued for SPA	DP	26 04 01
a	Constraints Redlined for Discussion	MB	23 02 27
1	Issued for SPA	MB	22 10 27
No	Revision	By	Yr Mo Da

All drawings and designs are the property of Cosburn Nauboris Limited and may not be used or reproduced without permission. This drawing must not be scaled.

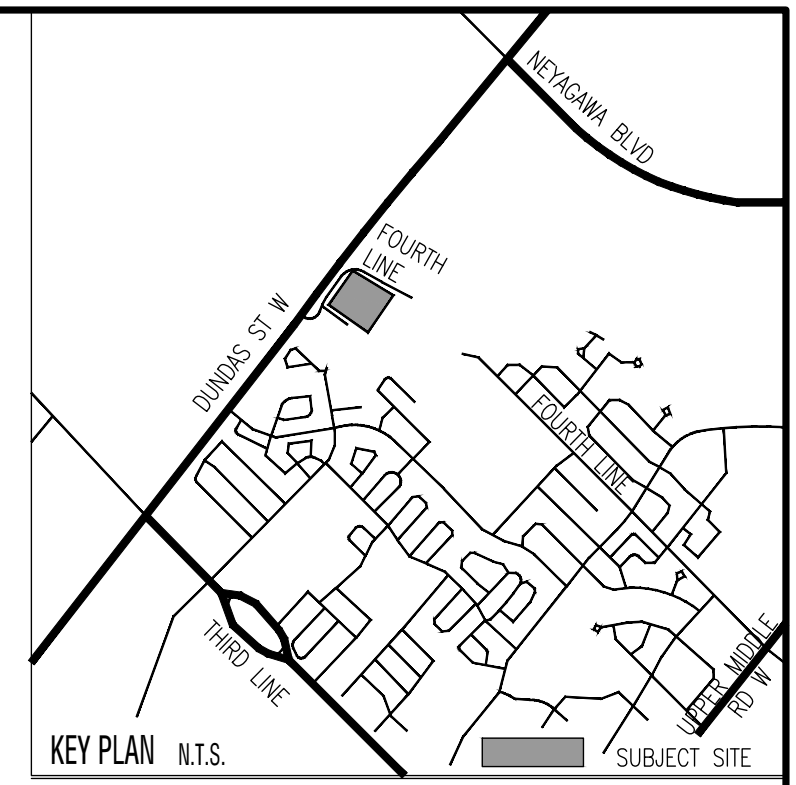
Invalid Unless Signed Original

cosburn nauboris LLP
landscape architects
2500 - 2580 FOURTH LINE
TOWN OF OAKVILLE
DELMANOR WEST OAK INC.

PEDESTRIAN CIRCULATION PLAN

Drawn by	MB	Scale	1:500
Checked by	HN	Plot Date	2026-05-07
Approved by	HN	Project	2316

L2
Drawing No.



LEGEND

- PROPERTY LINE
- DEVELOPMENT LIMIT
- CHAIN LINK FENCE
- DECORATIVE METAL FENCE
- POST AND RAIL WOOD FENCE
- TREE PROTECTION FENCE
- UNIT CONCRETE PAVING
- ASPHALT PAVING
- CONCRETE PAVING
- PROTECTIVE SURFACING
- SOD PLANTING
- DECIDUOUS TREE PLANTING
- LIMIT OF SOIL CELLS BELOW
- CONFEROUS TREE PLANTING
- DECIDUOUS SHRUBS PLANTING (SMALL)
- CONFEROUS SHRUBS PLANTING (SMALL)
- BROADLEAF EVERGREEN SHRUBS PLANTING
- SHRUB OR PERENNIAL PLANTING
- EXISTING DECIDUOUS TREE TO REMAIN
- EXISTING CONIFEROUS TREE TO REMAIN
- EXISTING TREE POLYGON TO REMAIN
- PLANT QUANTITY
- PLANT KEY
- DETAIL NUMBER
- DETAIL KEY
- DRAWING NUMBER
- LIGHT POLE
- LIGHT BOLLARD
- LUMINAIRES

Base Information

Architectural base information received in digital format from Icke Brochu Architects Inc., Project No.17.23, Drawing No. A301 dated and received March 05, 2026.

Grading and servicing information received in digital format from R.V. Anderson Associates Limited, Project No. 195028, drawings dated and received April 02, 2026.

Lighting plan received in digital format from Saxe Inc., Project No. A22178, drawings dated and received March 06, 2026.

2	Issued for SPA	DP	26 04 01
a	Constraints Redlined for Discussion	MB	23 02 27
1	Issued for SPA	MB	22 10 27
No	Revision	By	Yr Mo Da

All drawings and designs are the property of Cosburn Nauboris Limited and may not be used or reproduced without permission. This drawing must not be scaled.

Invalid Unless Signed Original

cosburn nauboris LTD
landscape architects

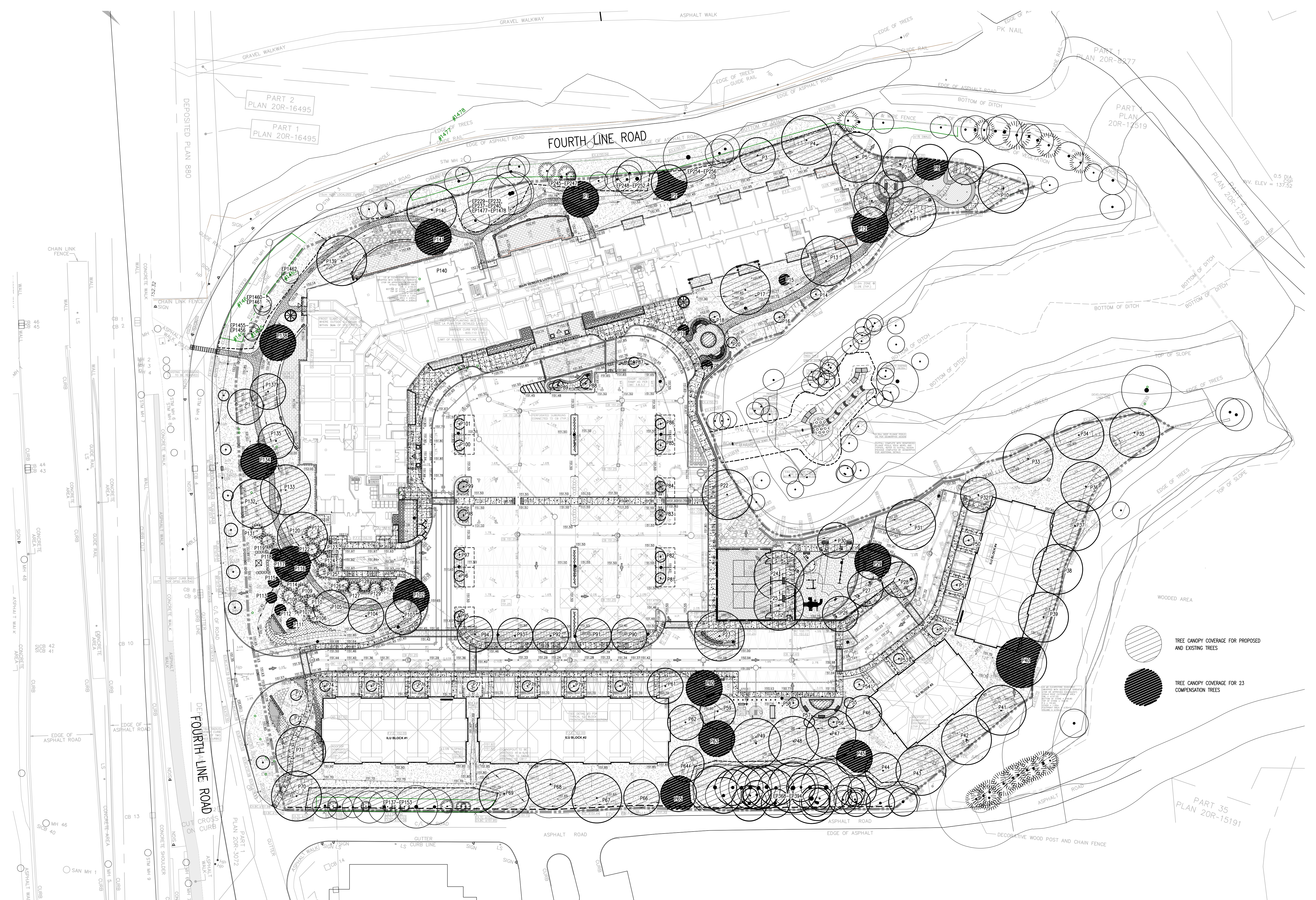
OAKVILLE SENIOR RESIDENCE
2500 - 2580 FOURTH LINE
TOWN OF OAKVILLE
DELMANOR WEST OAK INC.

20 crown steel or. suite 2
1955 rd on 13r 9x9
444.3
cosburnnauboris.ca

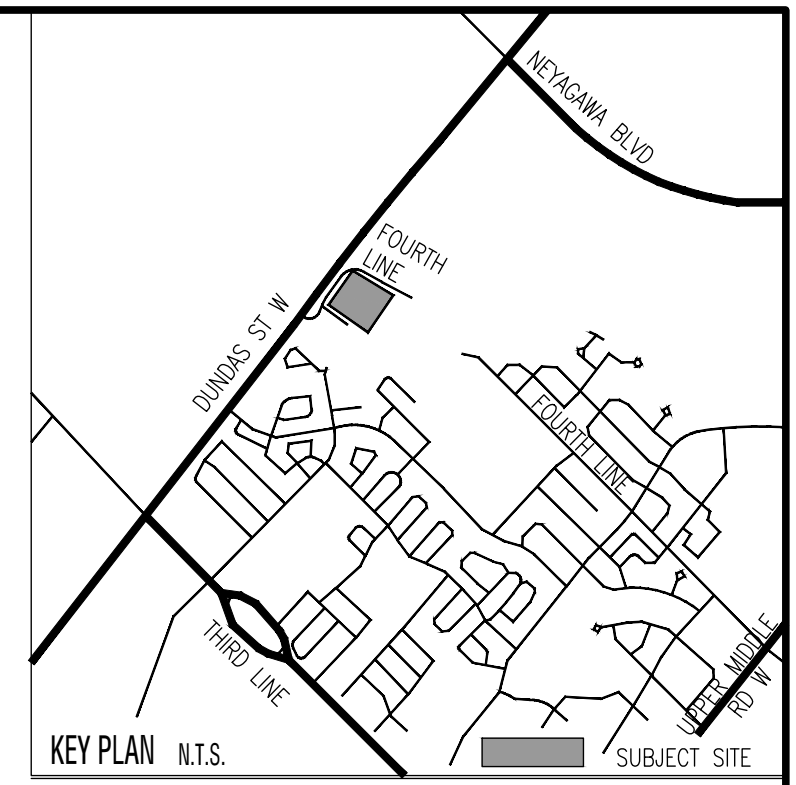
CANOPY COVER PLAN

Drawn by	MB	Scale	1:500
Checked by	HN	Plot Date	2026-05-07
Approved by	HN	Project	2316

L3
Drawing No.



NOTE: REFER TO DRAWING L4 FOR CANOPY CALCULATION CHART



CANOPY CALCULATION CHART

FILE NUMBER _____
 FILE NAME Delmanor West Oak
 CANOPY COVER TARGET 25% (based on land use)

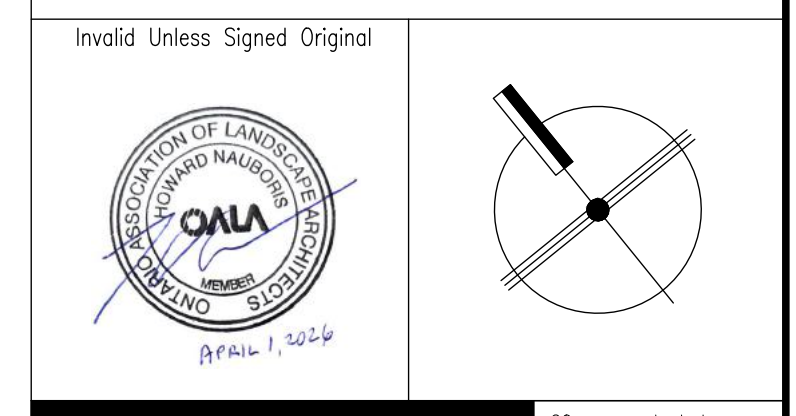
Tree #	Species	Stature (S,M,L)	Soil Volume per Tree (m ³)	Development Site Canopy Area (m ²)	Canopy Area (m ²)	Compensation Plantings Canopy Area (m ²)
Proposed Canopy On Site						
P1	Platanus x acerifolia 'Bloodgood'	M	30		76.65	1
P2	Platanus x acerifolia 'Bloodgood'	M	30		50.37	2
P3	Platanus x acerifolia 'Bloodgood'	M	30			
P4	Celtis occidentalis	L	30			
P5	Celtis occidentalis	L	30			
P6	Tilia americana	M	30			
P7	Tilia americana	M	30			
P8	Tilia americana	M	30			
P9	Tilia americana	M	30			
P10	Celtis occidentalis	L	30			
P11	Celtis occidentalis	L	30			
P12	Tilia americana	M	30			
P13	Celtis occidentalis	L	30			
P14	Pyrus calleryana 'Glen's Form'	S	30			
P15	Pyrus calleryana 'Glen's Form'	S	30			
P16	Pyrus calleryana 'Glen's Form'	S	30			
P17	Celtis occidentalis	L	30			
P18	Ginkgo biloba 'Princeton Sentry'	S	30			
P19	Ginkgo biloba 'Princeton Sentry'	S	30			
P20	Ginkgo biloba 'Princeton Sentry'	S	30			
P21	Ginkgo biloba 'Princeton Sentry'	S	30			
P22	Liriodendron tulipifera	L	30			
P23	Liriodendron tulipifera	L	30			
P24	Liriodendron tulipifera	L	30			
P25	Liriodendron tulipifera	L	30			
P26	Platanus x acerifolia 'Bloodgood'	M	30			
P27	Platanus x acerifolia 'Bloodgood'	M	30			
P28	Platanus x acerifolia 'Bloodgood'	M	30			
P29	Platanus x acerifolia 'Bloodgood'	M	30			
P30	Platanus x acerifolia 'Bloodgood'	M	30			
P31	Celtis occidentalis	L	30			
P32	Quercus macrocarpa	M	30			
P33	Celtis occidentalis	L	30			
P34	Celtis occidentalis	L	30			
P35	Celtis occidentalis	L	30			
P36	Quercus rubra	L	30			
P37	Quercus rubra	L	30			
P38	Quercus rubra	L	30			
P39	Celtis occidentalis	L	30			
P40	Celtis occidentalis	L	30			
P41	Acer rubrum	L	30			
P42	Acer rubrum	L	30			
P43	Acer rubrum	L	30			
P44	Gleditsia triacanthos 'Skyline'	M	30			
P45	Gleditsia triacanthos 'Skyline'	M	30			
P46	Gleditsia triacanthos 'Skyline'	M	30			
P47	Liriodendron tulipifera	L	30			
P48	Liriodendron tulipifera	L	30			
P49	Liriodendron tulipifera	L	30			
P50	Ginkgo biloba 'Princeton Sentry'	S	30			
P51	Ginkgo biloba 'Princeton Sentry'	S	30			
P52	Ginkgo biloba 'Princeton Sentry'	S	30			
P53	Ostrya virginiana	S	30			
P54	Ostrya virginiana	S	30			
P55	Ginkgo biloba 'Princeton Sentry'	S	30			
P56	Ginkgo biloba 'Princeton Sentry'	S	30			
P57	Ginkgo biloba 'Princeton Sentry'	S	30			
P58	Ginkgo biloba 'Princeton Sentry'	S	30			
P59	Gleditsia triacanthos 'Skyline'	M	30			
P60	Tilia americana	M	30			
P61	Tilia americana	M	30			
P62	Gleditsia triacanthos 'Skyline'	M	30			
P63	Gleditsia triacanthos 'Skyline'	M	30			
P64	Zelkova serrata 'Green Vase'	M	30			
P65	Zelkova serrata 'Green Vase'	M	30			
P66	Zelkova serrata 'Green Vase'	M	30			
P67	Acer rubrum	L	30			
P68	Acer rubrum	L	30			
P69	Acer rubrum	L	30			
P70	Celtis occidentalis	L	30			
P71	Celtis occidentalis	L	30			
P72	Acer x freemanii 'Armstrong'	S	30			
P73	Acer x freemanii 'Armstrong'	S	30			
P74	Ginkgo biloba 'Princeton Sentry'	S	30			
P75	Ginkgo biloba 'Princeton Sentry'	S	30			
P76	Ginkgo biloba 'Princeton Sentry'	S	30			

Tree #	Species	Stature (S,M,L)	Soil Volume per Tree (m ³)	Development Site Canopy Area (m ²)	Canopy Area (m ²)	Compensation Plantings Canopy Area (m ²)
P77	Ostrya virginiana	S	30			
P78	Ostrya virginiana	S	30			
P79	Ostrya virginiana	S	30			
P80	Ostrya virginiana	S	30			
P81	Ostrya virginiana	S	30			
P82	Ostrya virginiana	S	30			
P83	Pyrus calleryana 'Glen's Form'	S	30			
P84	Pyrus calleryana 'Glen's Form'	S	30			
P85	Ostrya virginiana	S	30			
P86	Ostrya virginiana	S	30			
P87	Pyrus calleryana 'Glen's Form'	S	30			
P88	Ostrya virginiana	S	30			
P89	Ostrya virginiana	S	30			
P90	Zelkova serrata 'Green Vase'	M	30			
P91	Zelkova serrata 'Green Vase'	M	30			
P92	Gleditsia triacanthos 'Skyline'	M	30			
P93	Gleditsia triacanthos 'Skyline'	M	30			
P94	Gleditsia triacanthos 'Skyline'	M	30			
P95	Pyrus calleryana 'Glen's Form'	S	30			
P96	Ostrya virginiana	S	30			
P97	Ostrya virginiana	S	30			
P98	Syringa reticulata 'Ivory Silk'	S	30			
P99	Syringa reticulata 'Ivory Silk'	S	30			
P100	Pyrus calleryana 'Redspire'	S	30			
P101	Pyrus calleryana 'Redspire'	S	30			
P102	Zelkova serrata 'Green Vase'	M	30			
P103	Zelkova serrata 'Green Vase'	M	30			
P104	Tilia americana	M	30			
P105	Tilia americana	M	30			
P106	Picea glauca	S	30			
P107	Picea pungens 'Glauca'	S	30			
P108	Picea glauca	S	30			
P109	Picea pungens 'Glauca'	S	30			
P110	Picea glauca	S	30			
P111	Acer x freemanii 'Armstrong'	S	30			
P112	Acer x freemanii 'Armstrong'	S	30			
P113	Acer x freemanii 'Armstrong'	S	30			
P114	Picea glauca	S	30			
P115	Acer x freemanii 'Armstrong'	S	30			
P116	Tilia americana	M	30			
P117	Picea glauca	S	30			
P118	Acer x freemanii 'Armstrong'	S	30			
P119	Picea pungens 'Glauca'	S	30			
P120	Quercus rubra	L	30			
P121	Picea pungens 'Glauca'	S	30			
P122	Picea pungens 'Glauca'	S	30			
P123	Picea pungens 'Glauca'	S	30			
P124	Picea pungens 'Glauca'	S	30			
P125	Picea pungens 'Glauca'	S	30			
P126	Pinus sylvestris	S	30			
P127	Pinus sylvestris	S	30			
P128	Pinus sylvestris	S	30			
P129	Pinus sylvestris	S	30			
P130	Pinus sylvestris	S	30			
P131	Picea pungens 'Glauca'	S	30			
P132	Quercus rubra	L	30			
P133	Quercus rubra	L	30			
P134	Platanus x acerifolia 'Bloodgood'	M	30			
P135	Platanus x acerifolia 'Bloodgood'	M	30			
P136	Platanus x acerifolia 'Bloodgood'	M	30			
P137	Platanus x acerifolia 'Bloodgood'	M	30			
P138	Zelkova serrata 'Green Vase'	M	30			
P139	Tilia americana	M	30			
P140	Quercus rubra	L	30			
P141	Tilia americana	M	30			
Subtotal of Proposed Canopy				6,358.50		1,144.38
Existing Canopy on Site [4]						
EP137-153	Acer saccharum, Thuja occidentalis				330	
EP229-232	Robinia pseudoacacia				189.17	
EP237-240	Aesculus hippocastanum					
EP1477-1478						
Subtotal of Existing Canopy				103.73		155.59
Existing Canopy Overhanging Site [4]						
EP245-247	Robinia pseudoacacia, Pinus strobus, Thuja occidentalis				18.32	
254-256	Acer saccharum, Quercus robur, Salix sp.				50.83	
Subtotal of Existing Overhanging Canopy				103.73		155.59
Total # of Trees				206		

Tree #	Species	Stature (S,M,L)	Soil Volume per Tree (m ³)	Development Site Canopy Area (m ²)	Canopy Area (m ²)	Compensation Plantings Canopy Area (m ²)
EP368-EP394	Robinia pseudoacacia, Pinus strobus, Picea abies, Quercus alba, Acer platanoides, Acer negundo, Salix sp., Thuja occidentalis, Acer negundo, Juglans ailantifolia, Malus sp., Juglans nigra				753.34	
EP1455-EP-1456	Robinia pseudoacacia				12.14	
EP1460-EP-1461	Robinia pseudoacacia				12.67	
EP1462	Robinia pseudoacacia				16.14	
Subtotal of Existing Canopy				2,118.06		
				multiplied by bonus factor of 1.5		3,177.09
Canopy Summary						
Total Development Site Area						32,990
Site Canopy Cover						29,38%
Canopy Cover Target by Land Use [1]						25
Parking Area Summary [5]						174
Total # of Trees in or within 5m of Parking Area						29

2	Issued for SPA	DP	26 04 01
a	Constraints Redlined for Discussion	MB	23 02 27
1	Issued for SPA	MB	22 10 27
No	Revision	By	Yr Mo Da

All drawings and designs are the property of Cosburn Naurbis Limited and may not be used or reproduced without permission. This drawing must not be scaled.



cosburn naurbis LTD 20 crown steel st. suite 2 1955 8th ave on 13r 9x9 4443 cosburnnaurbis.ca

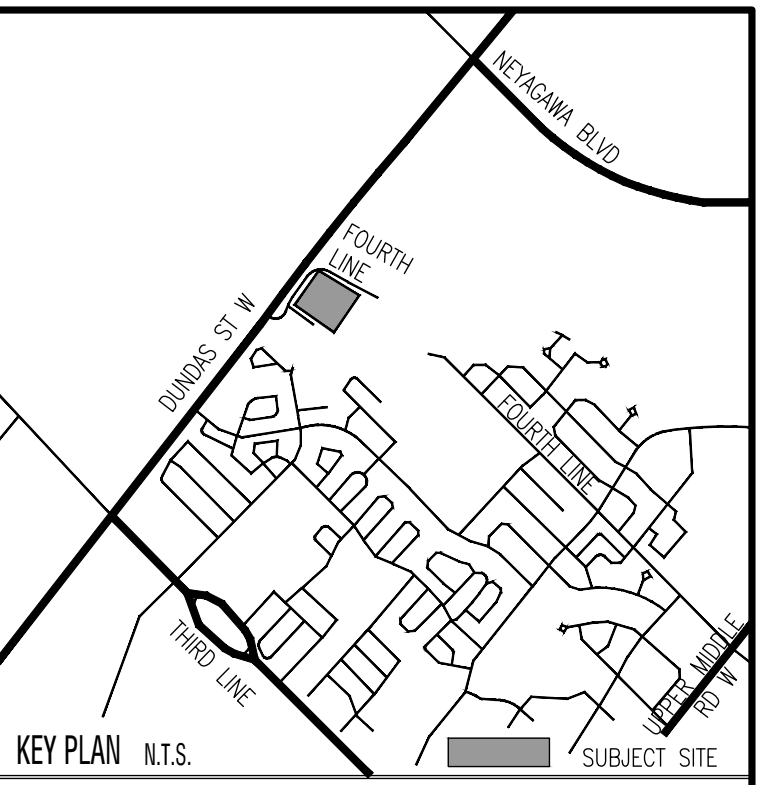
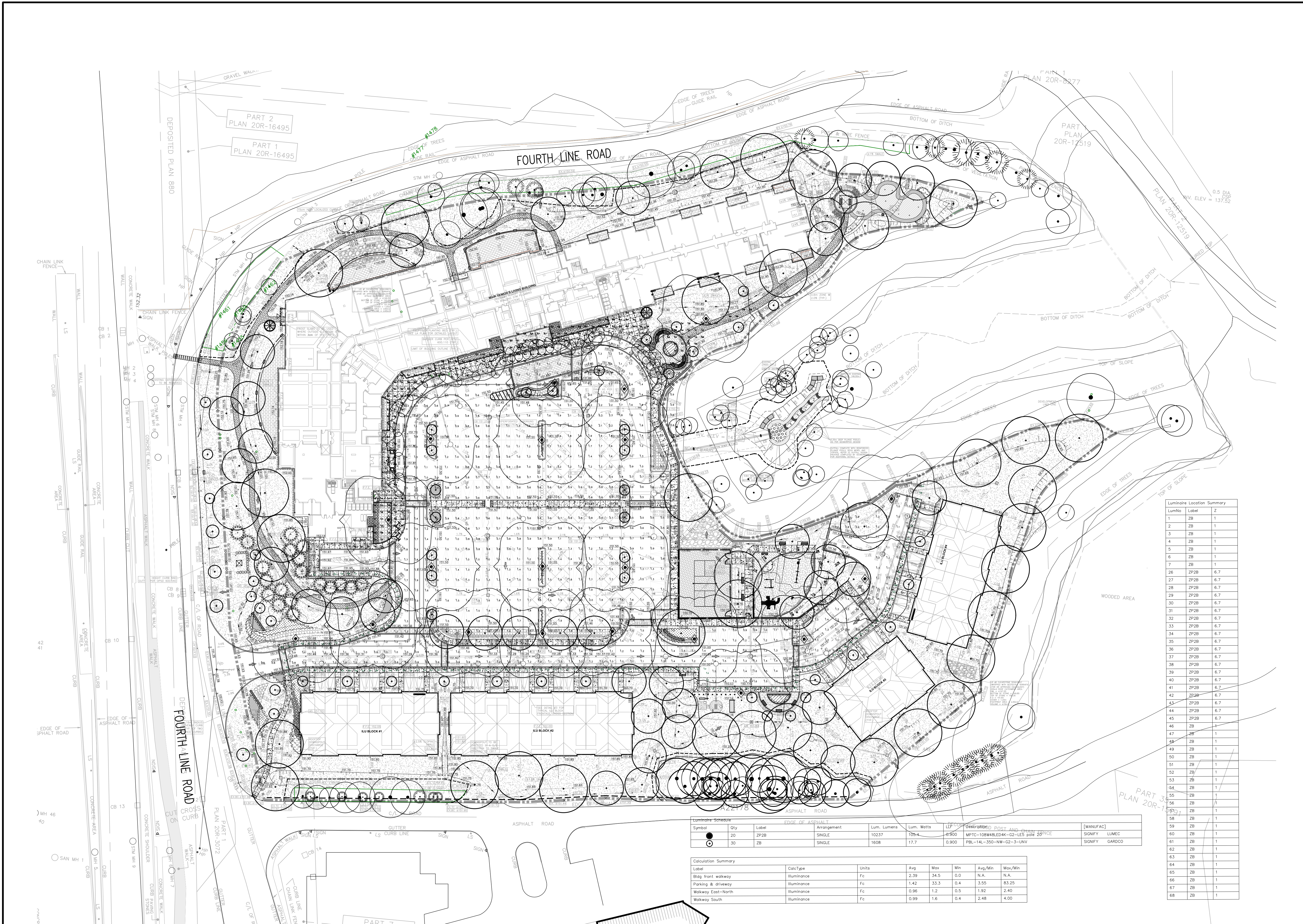
landscope architects

OAKVILLE SENIOR RESIDENCE
 2500 - 2580 FOURTH LINE
 TOWN OF OAKVILLE
 DELMANOR WEST OAK INC.

CANOPY CALCULATION CHART

Drawn by	MB	Scale	
Checked by	HN	Plot Date	2026-05-07
Approved by	HN	Project	2316

L4
Drawing No.



LEGEND

- PROPERTY LINE
- DEVELOPMENT LIMIT
- CHAIN LINK FENCE
- DECORATIVE METAL FENCE
- POST AND RAIL WOOD FENCE
- TREE PROTECTION FENCE
- UNIT CONCRETE PAVING
- ASPHALT PAVING
- CONCRETE PAVING
- PROTECTIVE SURFACING
- SOD PLANTING
- DECIDUOUS TREE PLANTING
- LIMIT OF SOIL CELLS BELOW
- CONIFEROUS TREE PLANTING
- DECIDUOUS SHRUBS PLANTING (SMALL)
- CONIFEROUS SHRUBS PLANTING (SMALL)
- BROADLEAF EVERGREEN SHRUBS PLANTING
- SHRUB OR PERENNIAL PLANTING
- EXISTING DECIDUOUS TREE TO REMAIN
- EXISTING CONIFEROUS TREE TO REMAIN
- EXISTING TREE POLYGON TO REMAIN
- PLANT QUANTITY
- PLANT KEY
- PLANT SPECIES
- LIGHT POLE
- LIGHT BOLLARD
- LUMINAIRES

Luminaire Location Summary

LumNo	Label	Z
1	ZB	1
2	ZB	1
3	ZB	1
4	ZB	1
5	ZB	1
6	ZB	1
7	ZB	1
26	ZP2B	6.7
27	ZP2B	6.7
28	ZP2B	6.7
29	ZP2B	6.7
30	ZP2B	6.7
31	ZP2B	6.7
32	ZP2B	6.7
33	ZP2B	6.7
34	ZP2B	6.7
35	ZP2B	6.7
36	ZP2B	6.7
37	ZP2B	6.7
38	ZP2B	6.7
39	ZP2B	6.7
40	ZP2B	6.7
41	ZP2B	6.7
42	ZP2B	6.7
43	ZP2B	6.7
44	ZP2B	6.7
45	ZP2B	6.7
46	ZB	1
47	ZB	1
48	ZB	1
49	ZB	1
50	ZB	1
51	ZB	1
52	ZB	1
53	ZB	1
54	ZB	1
55	ZB	1
56	ZB	1
57	ZB	1
58	ZB	1
59	ZB	1
60	ZB	1
61	ZB	1
62	ZB	1
63	ZB	1
64	ZB	1
65	ZB	1
66	ZB	1
67	ZB	1
68	ZB	1

Luminaire Schedule

Symbol	Qty	Label	Arrangement	Lum. Lumens	Lum. Watts	LEP	Description	Post and Bracket	[MANUFAC]
●	20	ZP2B	SINGLE	10237	105.4	0.950	MPTC-10WABLEDK-02-LES pole 26'	POST	SIGNIFY LUMEC
○	30	ZB	SINGLE	1608	17.7	0.900	PBL-14L-350-NW-G2-3-UNV	POST	SIGNIFY GARDOCO

Calculation Summary

Label	CalcType	Units	Avg	Max	Min	Avg/Min	Max/Min
Blgd front walkway	Illuminance	Fc	2.39	54.5	0.0	N.A.	N.A.
Parking & driveway	Illuminance	Fc	1.42	33.3	0.4	3.58	83.25
Walkway East-North	Illuminance	Fc	0.96	1.2	0.5	1.92	2.40
Walkway South	Illuminance	Fc	0.99	1.6	0.4	2.48	4.00

NOTE: REFER TO DRAWING L4 FOR CANOPY CALCULATION CHART

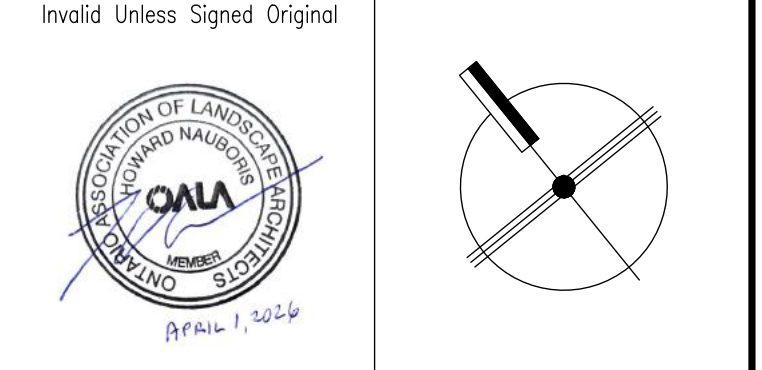
Architectural base information received in digital format from Icke Brochu Architects Inc., Project No.17.23, Drawing No. A301 dated and received March 05, 2026.

Grading and servicing information received in digital format from R.V. Anderson Associates Limited, Project No. 195028, drawings dated and received April 02, 2026.

Lighting plan received in digital format from Satek Inc., Project No. A22176, drawings dated and received March 06, 2026.

No	Revision	By	Yr	Mo	Dt
2	Issued for SPA	DP	26	04	01
a	Constraints Redlined for Discussion	MB	23	02	27
1	Issued for SPA	MB	22	10	27

All drawings and designs are the property of Cosburn Nauboris Limited and may not be used or reproduced without permission. This drawing must be sealed.

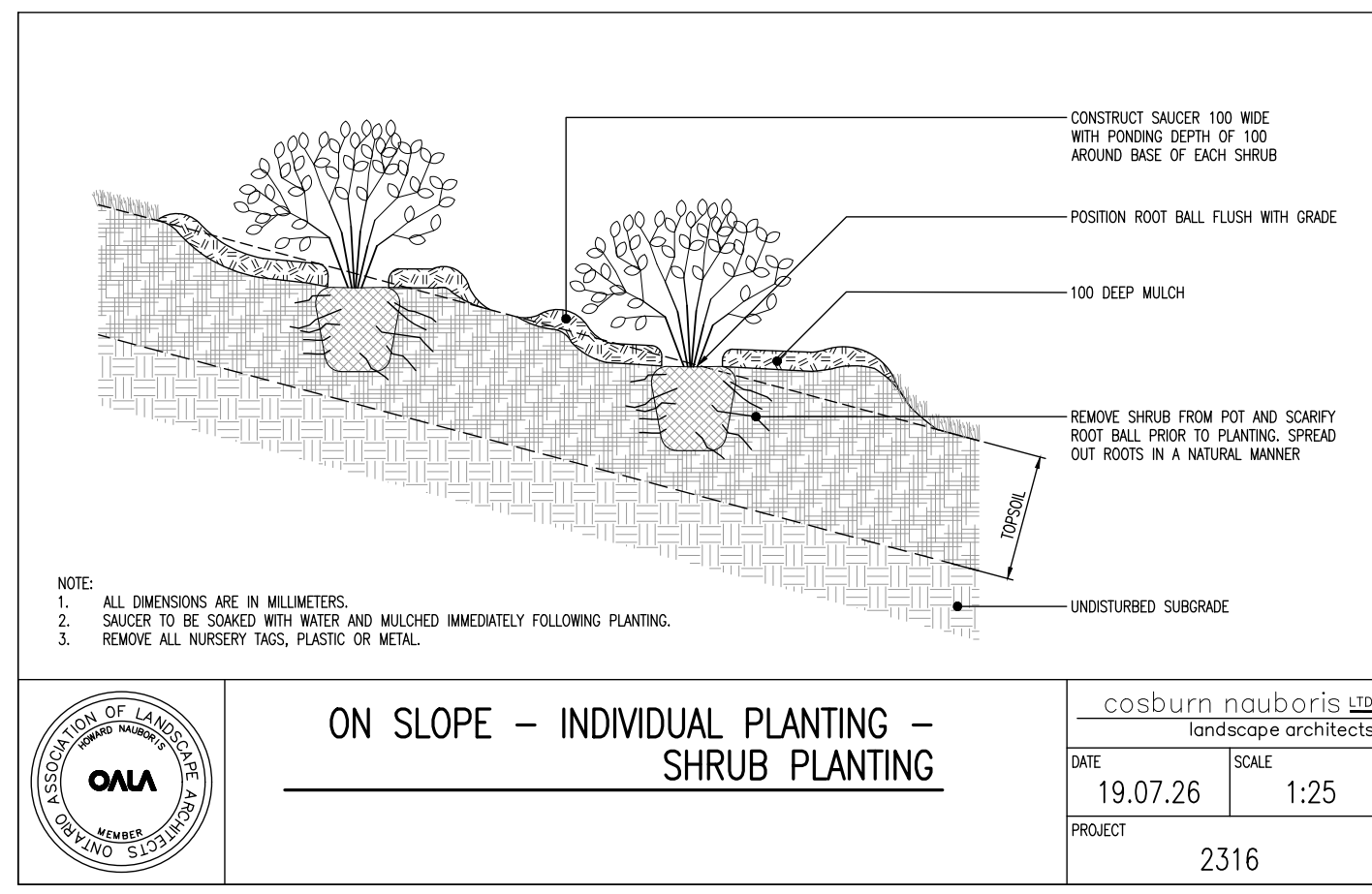
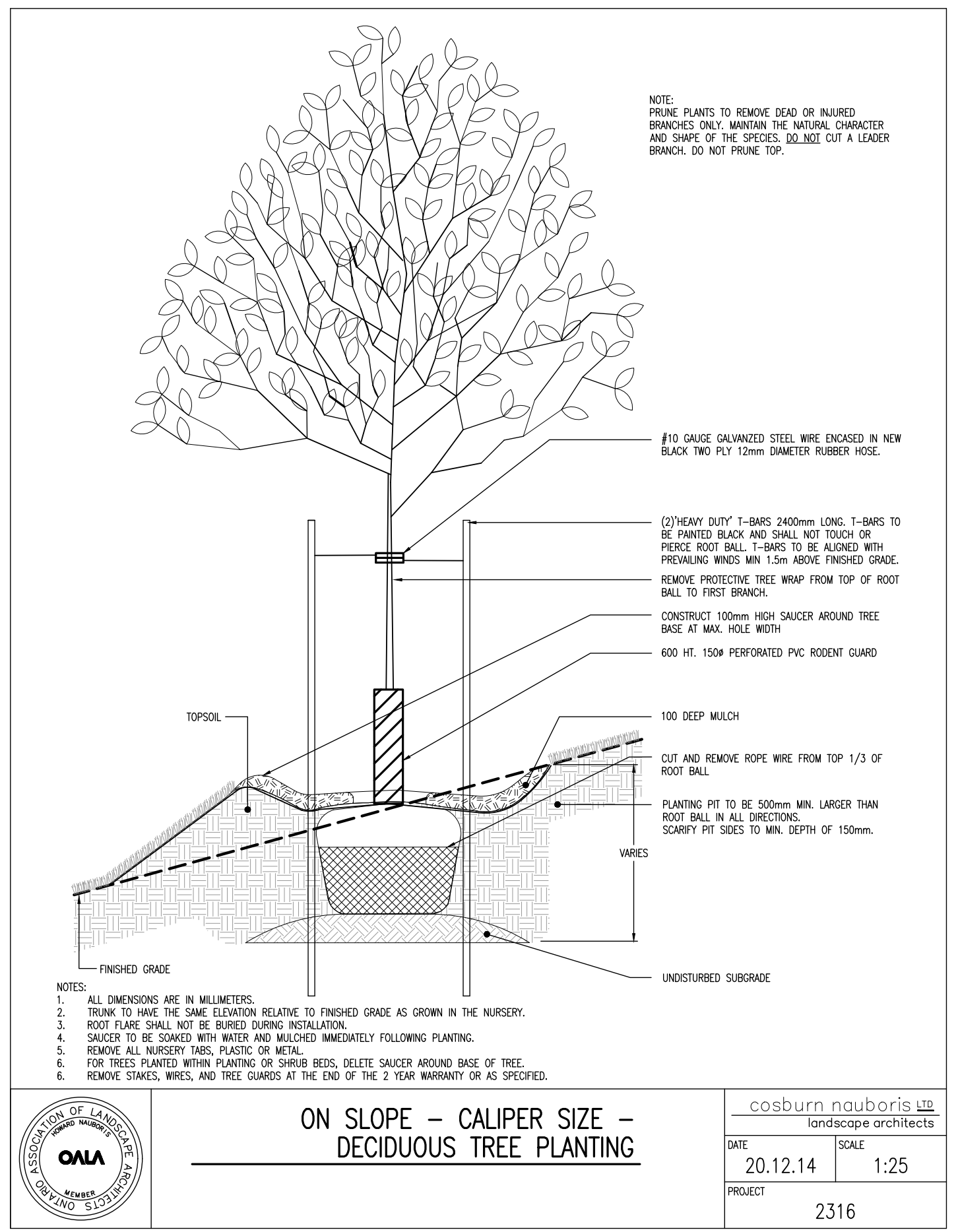


cosburn nauboris **LLD** landscape architects
 20 crown steel or. suite 2 1955 9th ave. n. s.w. 15r 9x9 444.3 cosburnnauboris.ca
OAKVILLE SENIOR RESIDENCE
 2500 - 2530 FOURTH LINE
 TOWN OF OAKVILLE
 DELMANOR WEST OAK INC.

SITE LIGHTING PLAN

Drawn by	MB	Scale	1:500
Checked by	HN	Plot Date	2026-05-07
Approved by	HN	Project	2316

L5
Drawing No.



PLANT CALCULATION TABLE – OUTFALL

A = TOTAL AREA (m ²)	D = OVERALL WOODY COVERAGE (m ²)	E = # OF TREES	F = # OF SHRUBS
500	D = A / 100m ²	E = D x 5	F = D x 25

CONSERVATION HALTON MEADOW MARSH SEED MIXTURE

CAREX BEBBII	BEEB'S SEDGE	1%
LOBELIA SPURTHUCKII	BLUE LOBELIA	1%
VERONICA WICHAII	BLUE VERONICA	10%
EUPATORIUM PERFORIATUM	BONESET	2%
SCORPUS ATROVIRENS	DARK GREEN BOURBURY	5%
CAREX ALPINA	TOX SEDGE	20%
EUPHRAZIA GRANIFLORA	GRASS LEAF GOLDENROD	1%
CAREX CRONQUII	MEADOW OPEN FELD SEDGE	10%
SMYTHOCHLOA PANICUM	PURPLE STIMMACK KIEFER	1%
JUNCUS EFFUSUS	SOFT RUSH	5%
EUPATORIUM MACULATUM	SPOTTED JOE PEE WEEED	2%
MANISUS GRACIOS	MONKEY FLOWER	1%
CAREX SIPHIDA	STALK GRASS SEDGE	2%
GLYCYRRHIZA GLABRA	TALL WANDA GRASS	2%
SCORPUS OXYMERIS	WILDGRASS	2%
POA PALUSTRIS	FOWL BLUEGRASS	25%

SEED SOURCE: OSC SEEDS
P.O. BOX 7, WATERLOO, ON, N2J 3J6
TEL # 1-519-886-0557

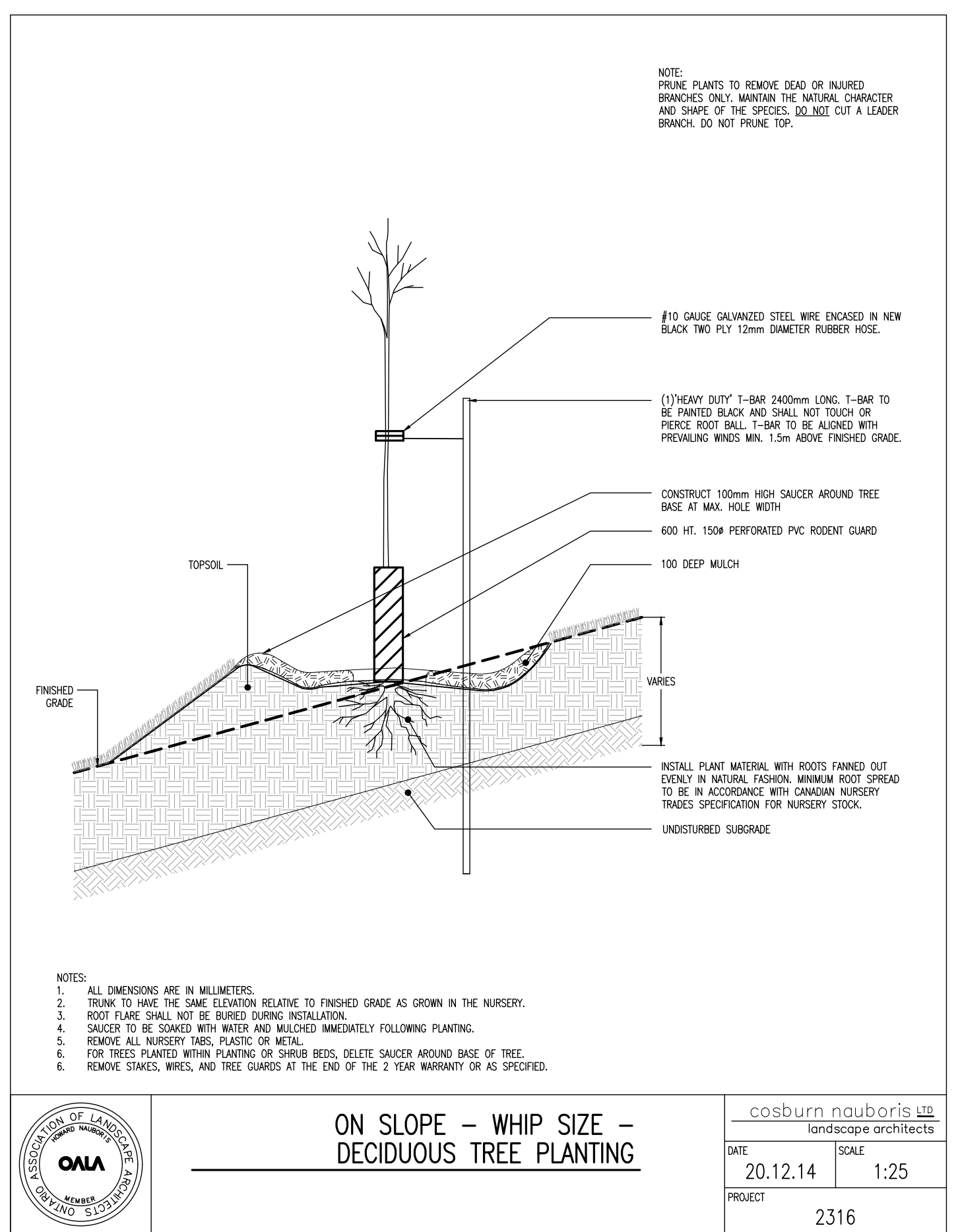
SEED RATE: 25kg/ha
SEEDING APPLICATION METHOD:
TERRAZING BY APPROVED CONTRACTOR

NURSE CROP SEED MIXTURE

AVENA SATIVA	COMMON OATS	100%
--------------	-------------	------

SEED SOURCE: OSC SEEDS
P.O. BOX 7, WATERLOO, ON, N2J 3J6
TEL # 1-519-886-0557

SEED RATE: 25kg/ha
SEEDING APPLICATION METHOD:
TERRAZING BY APPROVED CONTRACTOR



PLANT LIST – OUTFALL

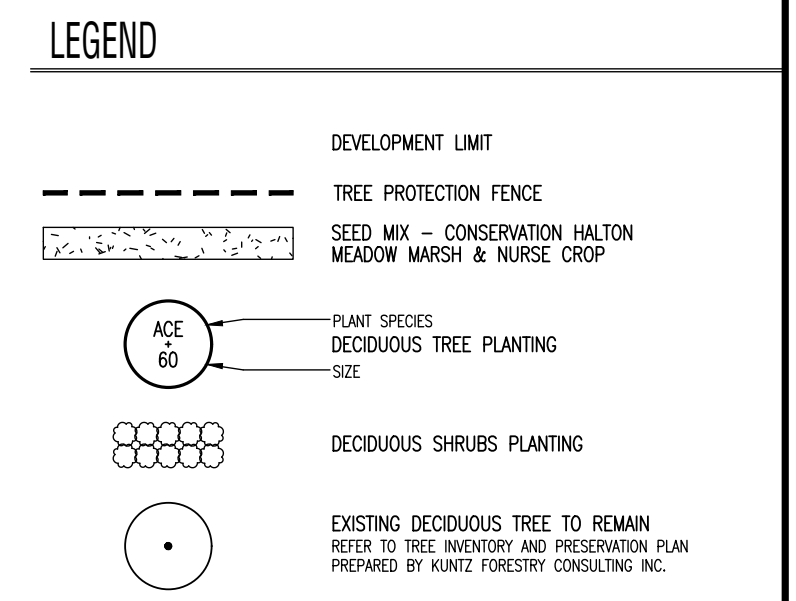
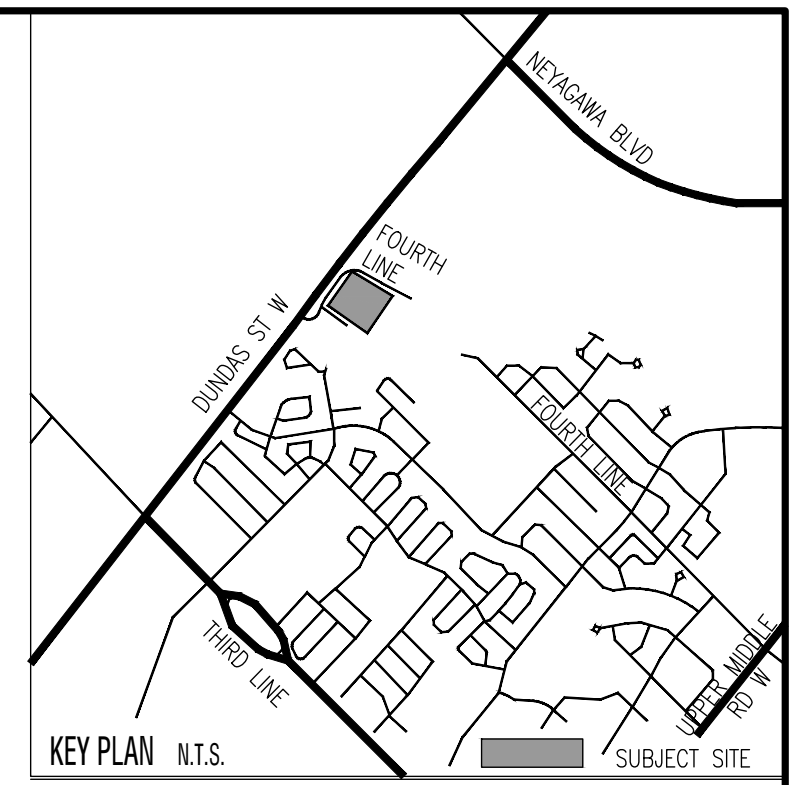
DECIDUOUS TREES

KEY	QTY.	BOTANICAL NAME	COMMON NAME	CAL. (mm)	HT. (cm)	SPREAD (cm)	ROOTS	REMARKS
AR100	4	Acer rubrum	Red Maple	-	100	-	Bare Root	-
AS100	3	Acer saccharum	Sugar Maple	-	100	-	Bare Root	-
BA100	3	Betula alleghaniensis	Yellow Birch	-	100	-	Bare Root	-
CO100	4	Corya cordifolia	Bitternut Hickory	-	100	-	Bare Root	-
OW5	3	Ostrya virginiana	Ironwood	45	-	-	WB	-
TA100	4	Tilia americana	Basswood	-	100	-	Bare Root	-
UA100	4	Ulmus americana	American Elm	-	100	-	Bare Root	-

DECIDUOUS SHRUBS

CR50	20	Cornus racemosa	Gray Dogwood	-	50	30	3 gal. pot	-
CS50	23	Cornus stolonifera	Red-Osier Dogwood	-	50	30	3 gal. pot	-
RO50	20	Rubus odoratus	Purple-Flowering Raspberry	-	50	30	3 gal. pot	-
SA50	22	Spiraea alba	Meadowsweet	-	50	30	3 gal. pot	-
SAL50	20	Symphoricarpos albus	Snowberry	-	50	30	3 gal. pot	-
SC50	20	Sambucus canadensis	American Elderberry	-	50	30	3 gal. pot	-

BBB – BALLED AND BURLAPPED WB – WIRE BASKET CG – CONTAINER GROWN FP – FIELD POTTED pot – POT GROWN



Base Information

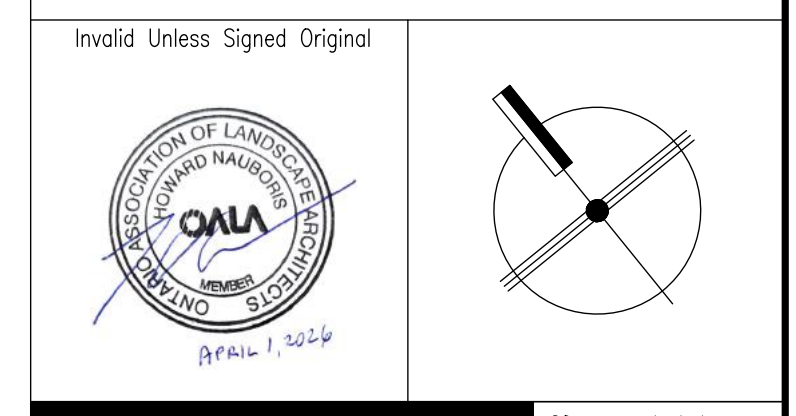
Architectural base information received in digital format from Icke Brochu Architects Inc., Project No.17.23, Drawing No. A301 dated and received March 05, 2026.

Grading and servicing information received in digital format from R.V. Anderson Associates Limited, Project No. 19502B, drawings dated and received April 02, 2026.

Lighting plan received in digital format from Satek Inc., Project No. A22178, drawings dated and received March 06, 2026.

No	Revision	By	Yr	Mo	Da
2	Issued for SPA	DP	26	04	01
a	Constraints Redlined for Discussion	MB	23	02	27
1	Issued for SPA	MB	22	10	27

All drawings and designs are the property of Cosburn Nauboris Limited and may not be used or reproduced without permission. This drawing must not be scaled.



cosburn nauboris
landscape architects

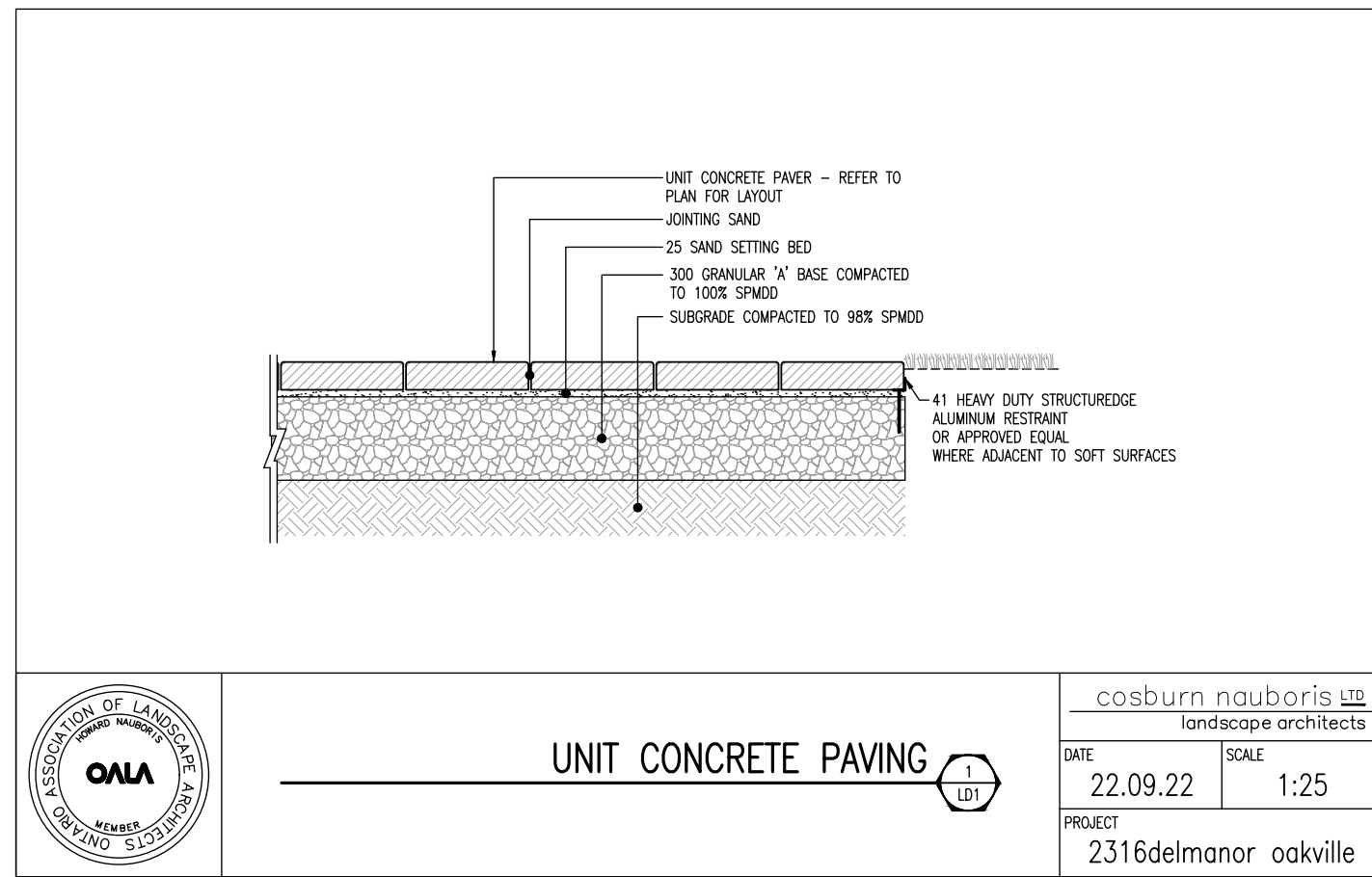
20 crown steel dr. suite 2 1888 8th on 13r 9x9 444.3
cosburnnauboris.ca

OAKVILLE SENIOR RESIDENCE
2500 – 2580 FOURTH LINE
TOWN OF OAKVILLE
DELMANOR WEST OAK INC.

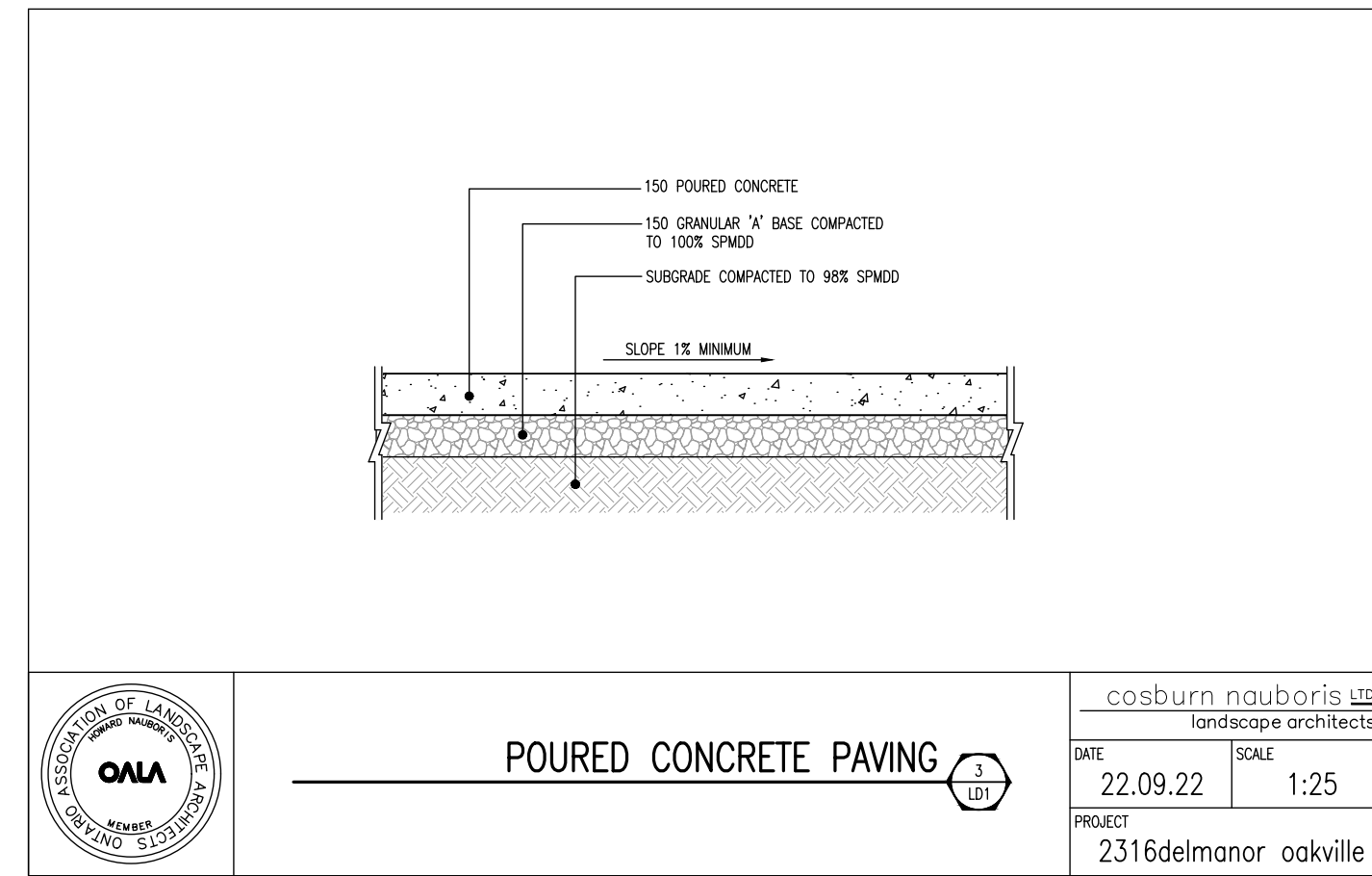
LANDSCAPE RESTORATION PLAN

Drawn by	SW	Scale	1:250
Checked by	HN	Plot Date	2026-05-07
Approved by	HN	Project	2316

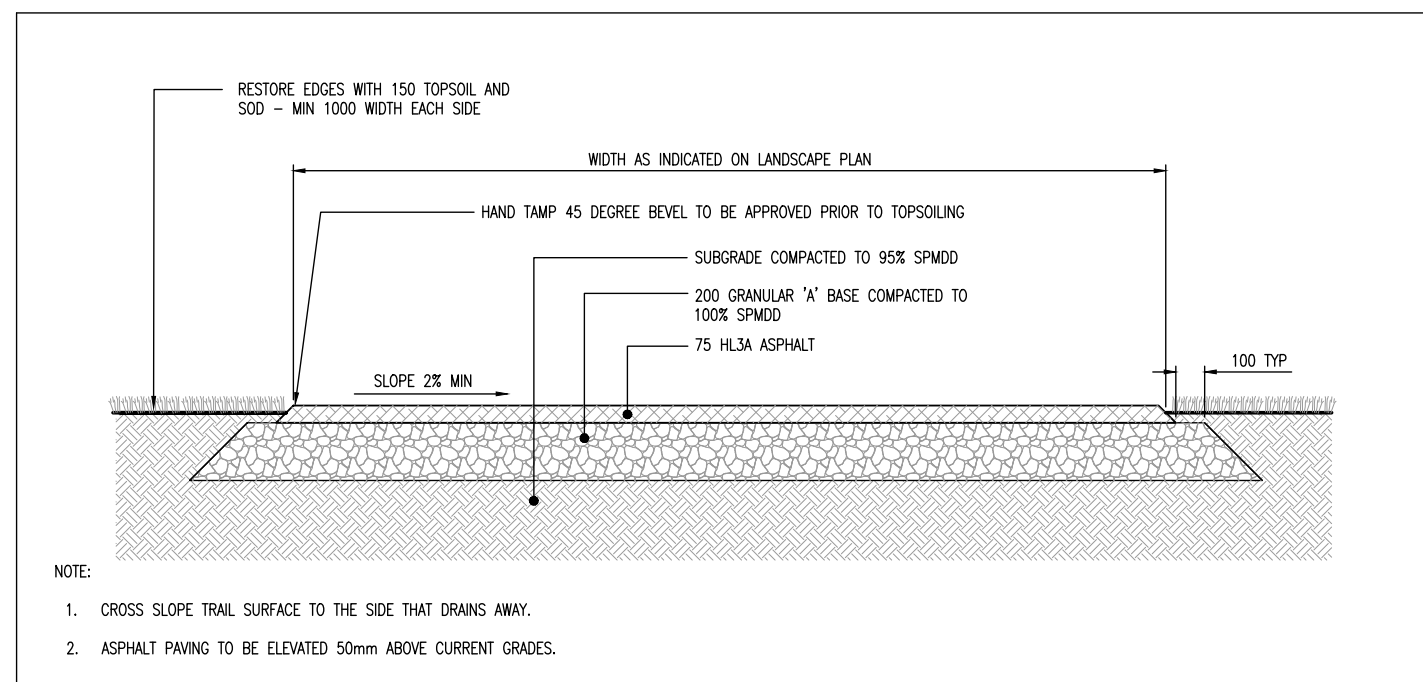
LR1
Drawing No.



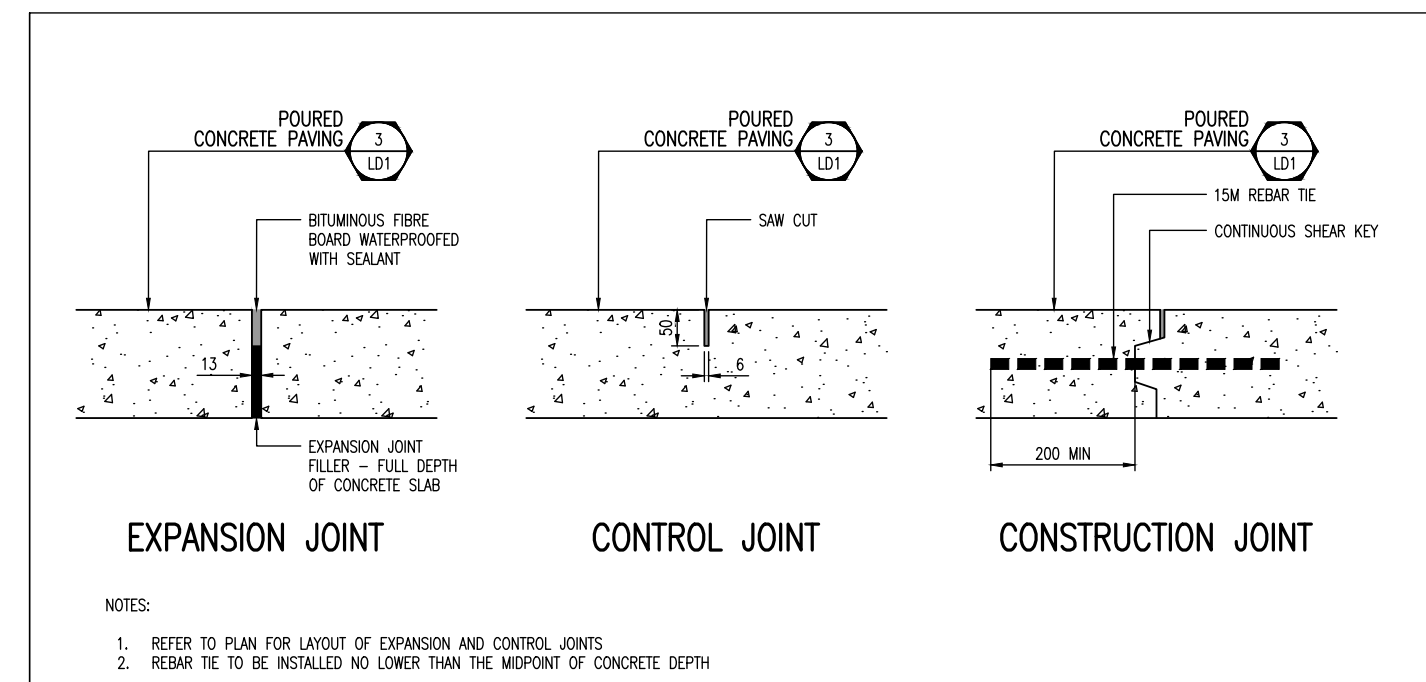
UNIT CONCRETE PAVING (1) LD1
 cosburn nauboris LTD landscape architects
 DATE: 22.09.22 SCALE: 1:25
 PROJECT: 2316delmanor oakville



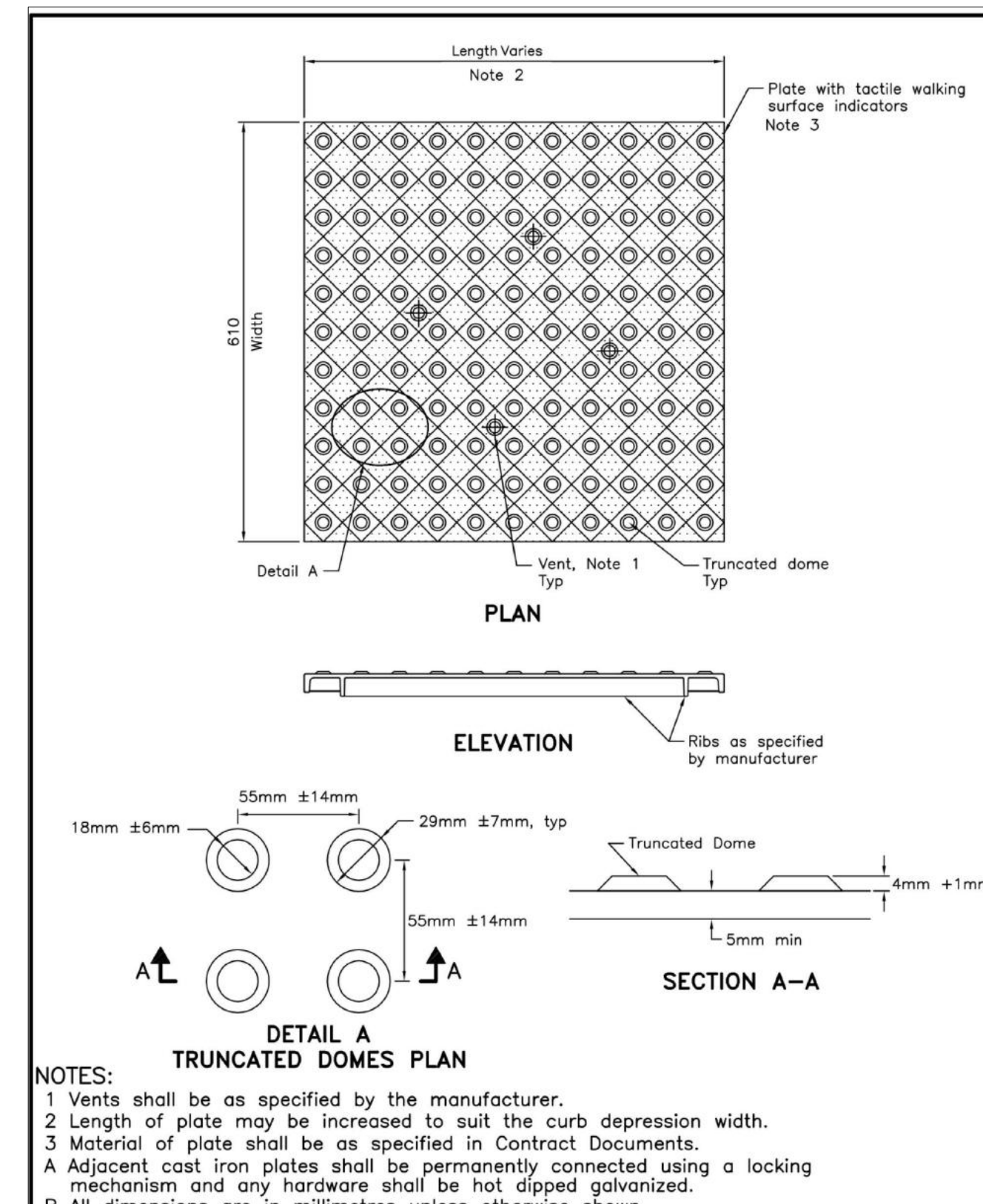
POURED CONCRETE PAVING (2) LD1
 cosburn nauboris LTD landscape architects
 DATE: 22.09.22 SCALE: 1:25
 PROJECT: 2316delmanor oakville



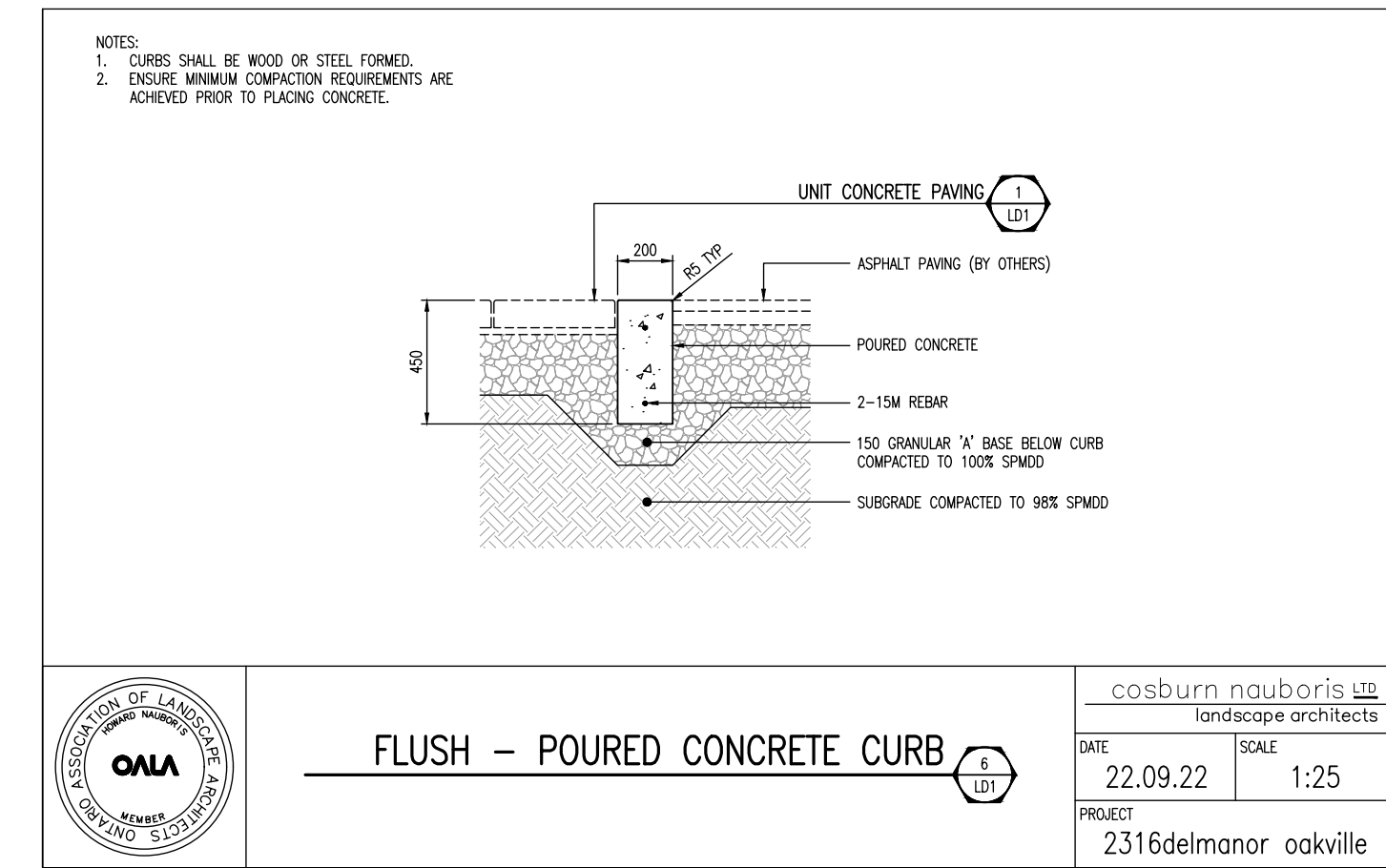
ASPHALT PAVING - LIGHT DUTY (2) LD1
 cosburn nauboris LTD landscape architects
 DATE: 22.09.22 SCALE: 1:25
 PROJECT: 2316delmanor oakville



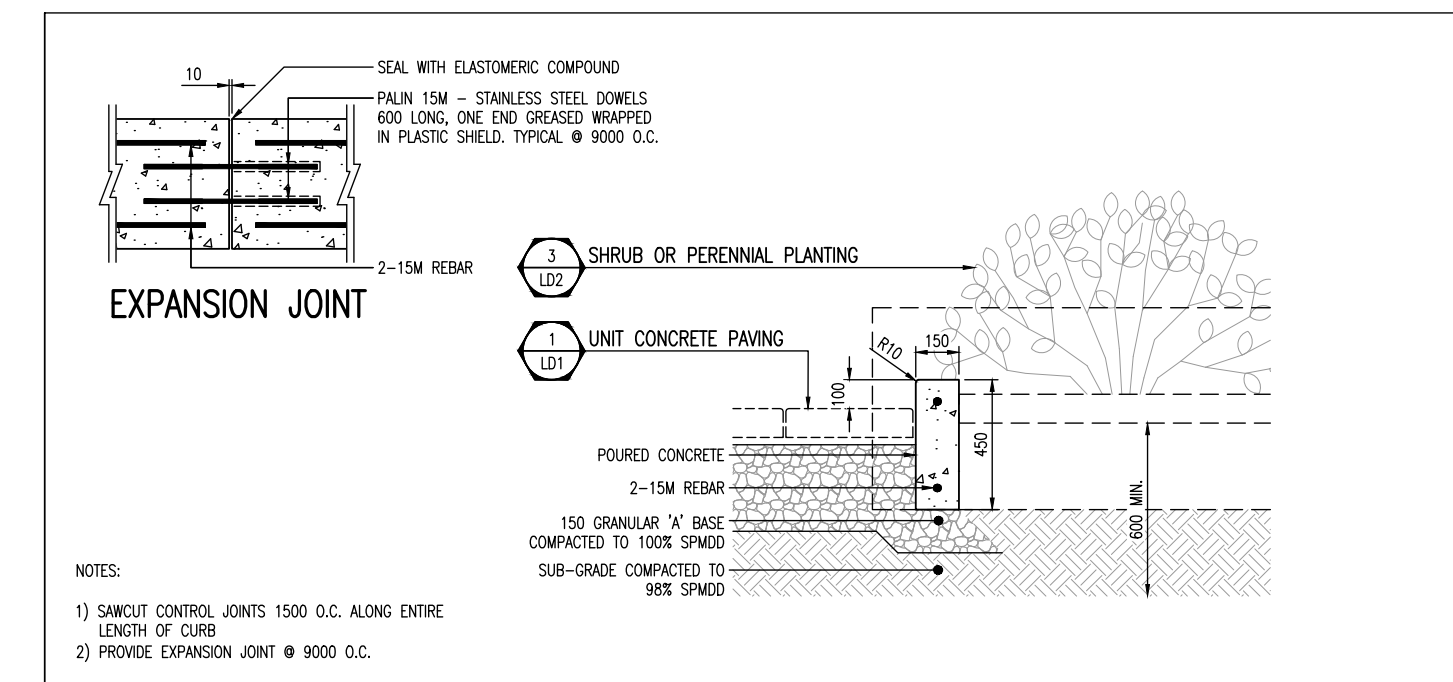
CONCRETE JOINTS (1) LD1
 cosburn nauboris LTD landscape architects
 DATE: 22.09.22 SCALE: 1:10
 PROJECT: 2316delmanor oakville



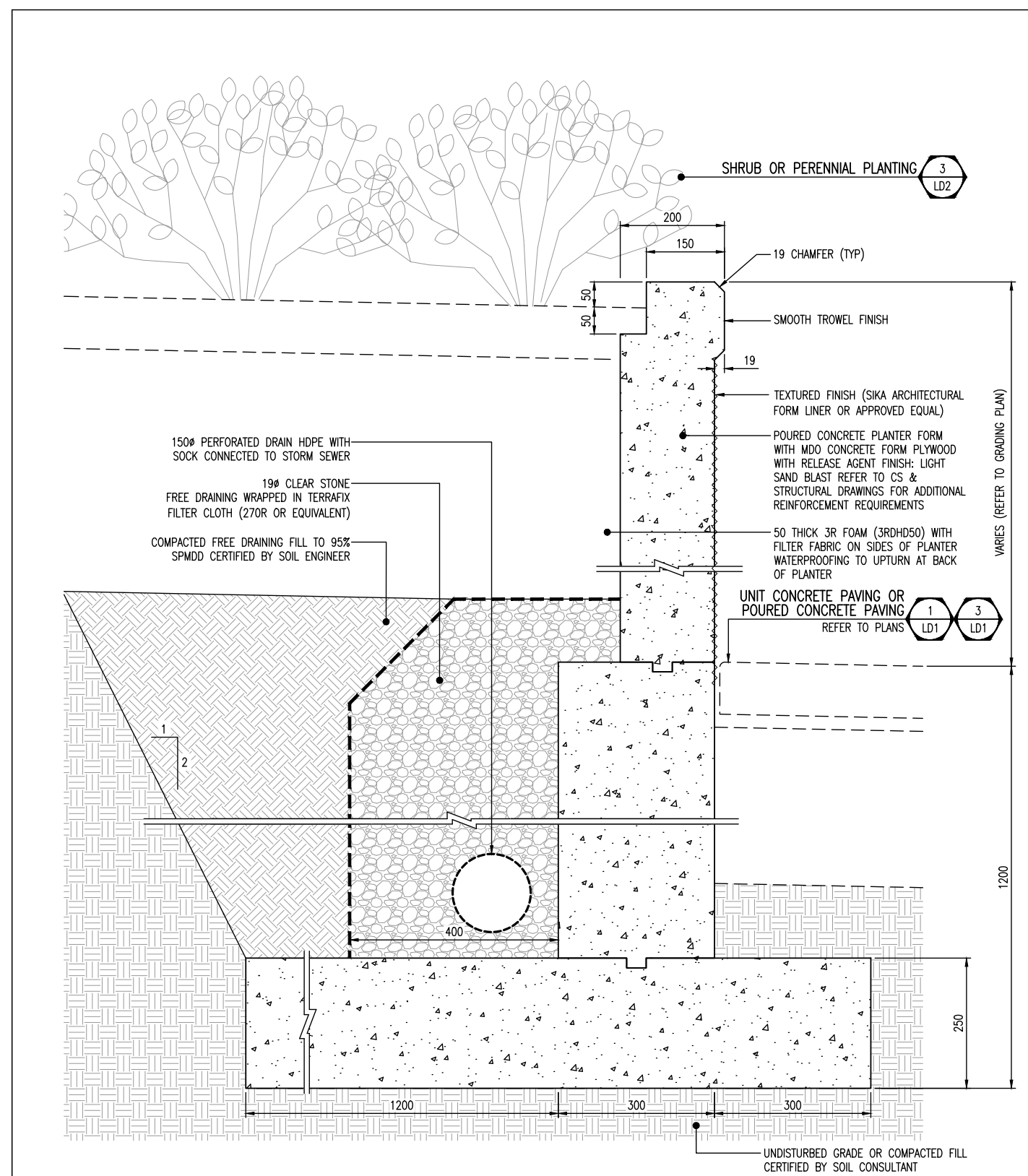
CONCRETE SIDEWALK RAMPS TACTILE WALKING SURFACE INDICATORS COMPONENT (3) LD1
 ONTARIO PROVINCIAL STANDARD DRAWING Nov 2019 Rev 1
 OPSD 310.039



FLUSH - POURED CONCRETE CURB (2) LD1
 cosburn nauboris LTD landscape architects
 DATE: 22.09.22 SCALE: 1:25
 PROJECT: 2316delmanor oakville



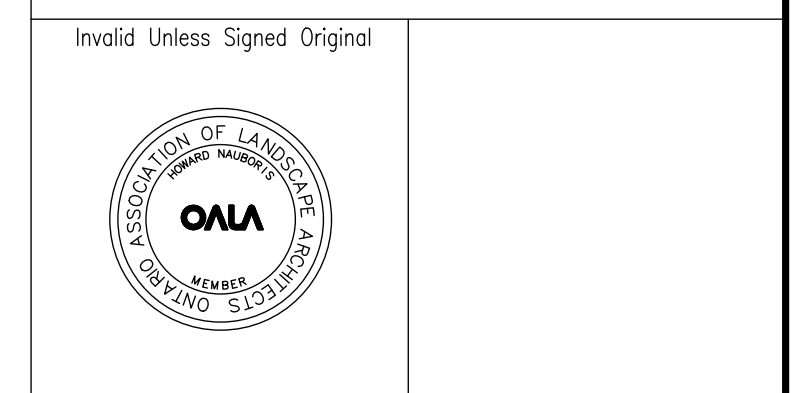
LOW PLANTER - POURED CONCRETE CURB (7) LD1
 cosburn nauboris LTD landscape architects
 DATE: 22.09.22 SCALE: 1:25
 PROJECT: 2316delmanor oakville



POURED CONCRETE PLANTER (1) LD1
 cosburn nauboris LTD landscape architects
 DATE: 22.09.22 SCALE: 1:10
 PROJECT: 2316delmanor oakville

2	Issued for SPA	DP	26 04 01
a	Constraints Redlined for Discussion	MB	23 02 27
1	Issued for SPA	MB	22 10 27
No	Revision	By	Yr Mo Da

All drawings and designs are the property of Cosburn Nauboris Limited and may not be used or reproduced without permission. This drawing must not be scaled.



cosburn nauboris LTD landscape architects
 20 crown steel dr. suite 2 1955 8th ave on 13r 9x9 4443 cosburnnauboris.ca
OAKVILLE SENIOR RESIDENCE
 2500 - 2580 FOURTH LINE
 TOWN OF OAKVILLE
 DELMANOR WEST OAK INC.

DETAILS

Drawn by	MB	Scale	AS SHOWN
Checked by	HN	Plot Date	2026-05-07
Approved by	HN	Project	2316

LD1
Drawing No.

PLAN
SCALE 1:40

SECTION A
SCALE 1:20

POURED CONCRETE PLAYGROUND RAMP

cosburn nauboris llc
landscape architects

DATE 22.10.06 SCALE AS SHOWN
PROJECT 2316delmanor oakville

1. CURBS SHALL BE WOOD OR STEEL FORMED.
2. ENSURE MINIMUM COMPACTION REQUIREMENTS ACHIEVED PRIOR TO PLACING CONCRETE.
3. REFER TO PLAN FOR SITE SPECIFIC LAYOUT
4. FIBERMESH REINFORCEMENT TO BE APPLIED AT A MINIMUM OF 0.1% BY VOLUME (0.9KG PER CUBIC METRE)

PROTECTIVE SURFACING
ENGINEERED WOOD FIBER

cosburn nauboris llc
landscape architects

DATE 20.11.23 SCALE 1:25
PROJECT 2290liberty village

PROTECTIVE SURFACE DRAINAGE SYSTEM

cosburn nauboris llc
landscape architects

DATE 20.11.23 SCALE 1:25
PROJECT 2290liberty village

POURED FLUSH CONCRETE PLAYGROUND CURB

cosburn nauboris llc
landscape architects

DATE 20.11.23 SCALE 1:15
PROJECT 2290liberty village

OUTLET DRAIN

cosburn nauboris llc
landscape architects

DATE 20.11.23 SCALE 1:25
PROJECT 2290liberty village

100 SERIES

MBE-0100-00003
Legacy # MLB100-RB-A

DESCRIPTION: 100 Series - 100 Backed Bench: 70in L, Cast Aluminum Ends, Wood Grain Texture High Density Polyethylene Seat and Back - Brown Color, Two End Arms

FINISH: All steel components are protected with E-Coat rust proofing. The Maglin Powdercoat System provides a durable finish on all metal surfaces.

INSTALLATION: The bench is delivered pre-assembled. Holes (0.5") are provided in each foot for securing to base.

TO SPECIFY: Select MBE-0100-00003
Choose:
- Powdercoat Color

HEIGHT: 30" (76.2cm) LENGTH: 70" (177.8cm) DEPTH: 30" (76.2cm) WEIGHT: 110 lbs (50kg)

MAGLIN
Site Furniture

T 800 798 8806
F 877 260 9393
www.maglin.com
sales@maglin.com

- All drawings, specifications, design and details on this page remain the property of Maglin Site Furniture Inc. and may not be used without Maglin authorization.
- Details and specifications may vary due to continuing improvements of our products.

100 SERIES

MBR-0100-00003
Legacy # MBR100-S

Sustainability Facts

Unit Size One (1) MBR-0100-00003 Bike Rack

Carbon footprint (GWP) 61.3 kg CO2-Eq
Measured in kilograms of carbon dioxide equivalent

Total energy use (TPE) 1050 MJ-Eq
Measured in megajoules of energy equivalent

Water use (WDP) 0.527 m3 water
Measured in cubic metres of water

Material recyclability 100%

LEED v4.1 Credits

Type III Environmental Product Declaration
Material Inventory
Low VOC finishes
Free of Red List substances

*Full EPD can be referenced for more information:
<https://www.epdincanada.com/maglin/>

DESCRIPTION: 100 Series - 100 Bike Rack: H.S. Steel Tube, Aluminum Spun Top, Surface Mount, 2 Bike Configuration

FINISH: All steel components are protected with E-Coat rust proofing. The Maglin Powdercoat System provides a durable finish on all metal surfaces.

INSTALLATION: The bike rack is delivered pre-assembled.

TO SPECIFY: Select MBR-0100-00003
Choose:
- Powdercoat Color

HEIGHT: 37" (84.5cm) WIDTH: 20" (50.8cm) WEIGHT: 14.48lbs (6.6kg)

MAGLIN
Site Furniture

T 800 798 8806
F 877 260 9393
www.maglin.com
sales@maglin.com

- All drawings, specifications, design and details on this page remain the property of Maglin Site Furniture Inc. and may not be used without Maglin authorization.
- Details and specifications may vary due to continuing improvements of our products.

2	Issued for SPA	DP	26 04 01
a	Constraints Redlined for Discussion	MB	23 02 27
1	Issued for SPA	MB	22 10 27
No	Revision	By	Yr Mo Da

All drawings and designs are the property of Cosburn Nauboris Limited and may not be used or reproduced without permission. This drawing must not be scaled.

Invalid Unless Signed Original

cosburn nauboris llc
landscape architects

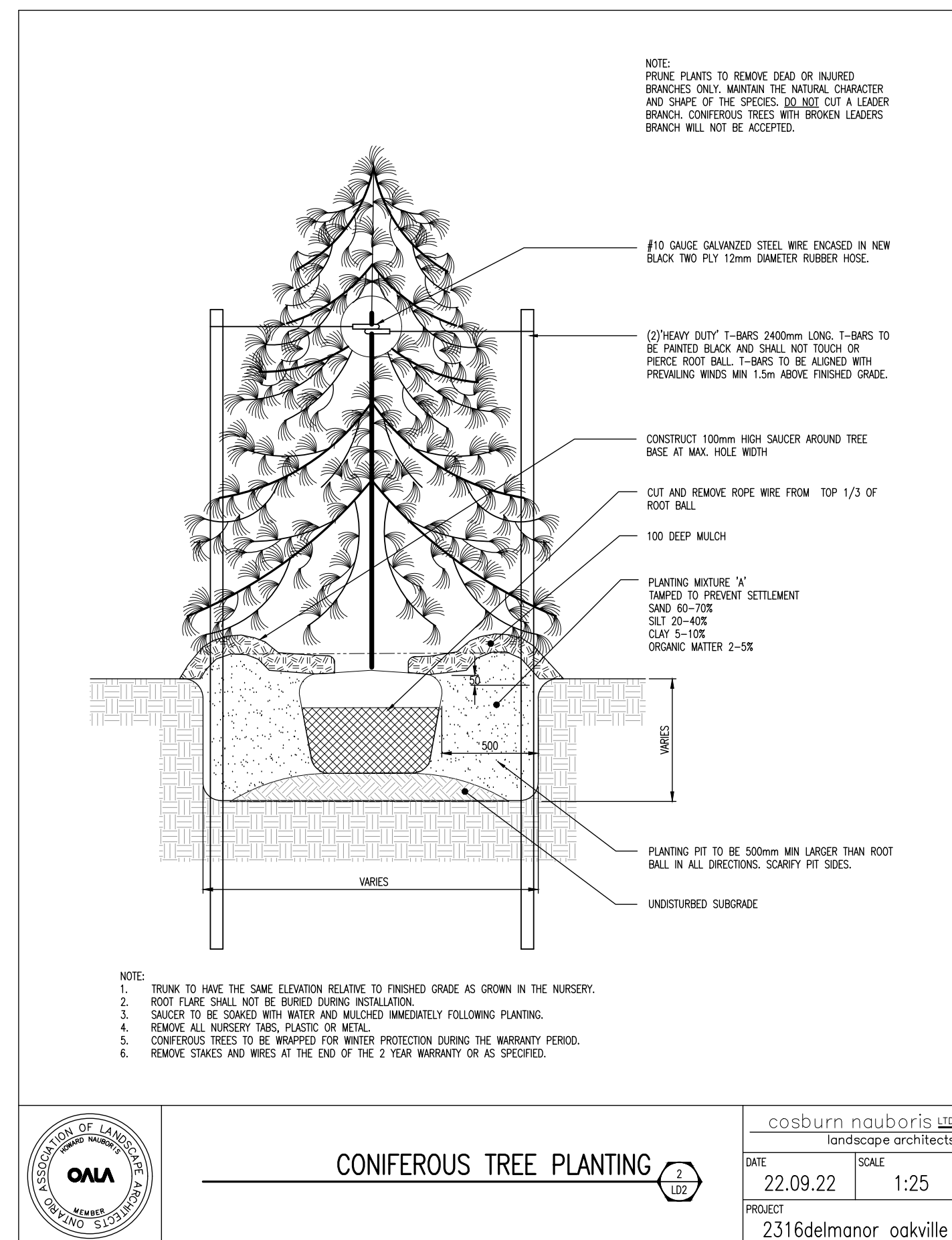
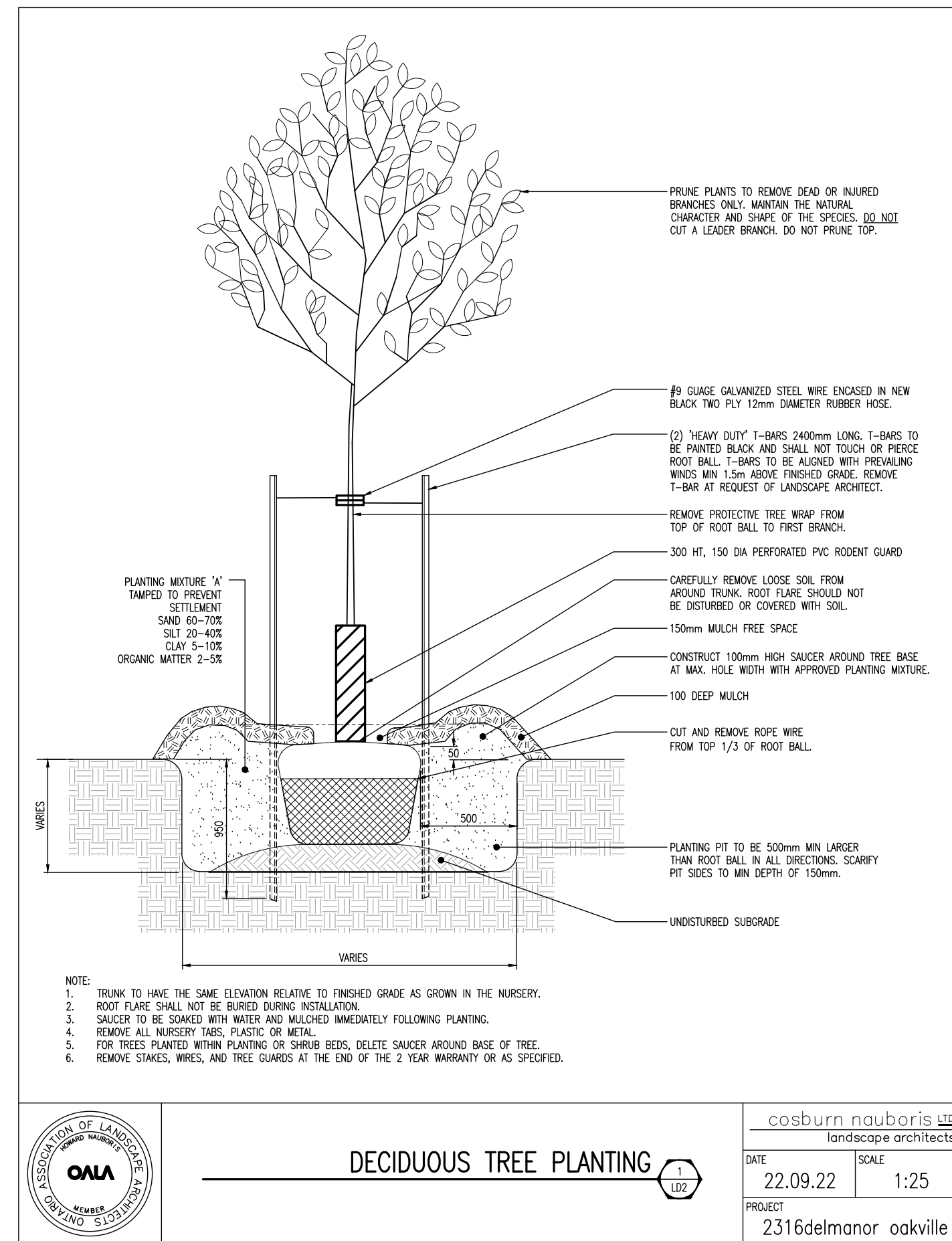
20 crown steel or
suite 2
1955th ave on 13r 9x9
6443
cosburnnauboris.ca

OAKVILLE SENIOR RESIDENCE
2500 - 2580 FOURTH LINE
TOWN OF OAKVILLE
DELMANOR WEST OAK INC.

DETAILS

Drawn by	MB	Scale	AS SHOWN
Checked by	HN	Plot Date	2026-05-07
Approved by	HN	Project	2316

LD2
Drawing No.



PLANT LIST

DECIDUOUS TREES

KEY	QTY.	BOTANICAL NAME	COMMON NAME	CAL. (mm)	HT. (cm)	SPREAD (cm)	ROOTS	REMARKS
AF60	7	Acer x freemanii 'Armstrong'	Armstrong Maple	60	-	-	WB	S
AR60	6	Acer rubrum	Red Maple	60	-	-	WB	L, native
CO60	14	Celtis occidentalis	Hackberry	60	-	-	WB	L, native
GBP60	13	Ginkgo biloba 'Princeton Sentry'	Princeton Sentry Ginkgo	60	-	-	WB	S
GTK60	9	Gleditsia triacanthos 'Skyline'	Skyline Honeylocust	60	-	-	WB	M
L160	7	Liriodendron tulipifera	Tulip Tree	60	-	-	WB	L, native
OV60	14	Ostrya virginiana	Ironwood	60	-	-	WB	S
PA60	12	Platanus x acerifolia 'Bloodgood'	Bloodgood London Planetree	60	-	-	WB	M
PC60	7	Pyrus calleryana 'Glen's Farm'	Chanticleer Ornamental Pear	60	-	-	WB	S
PCR60	0	Pyrus calleryana 'Redspire'	Redspire Ornamental Pear	60	-	-	WB	S
QMR60	1	Quercus macrocarpa	Bar Oak	60	-	-	WB	M, native
QR60	8	Quercus rubra	Red Oak	60	-	-	WB	L, native
SR60	2	Syringa reticulata 'Ivory Silk'	Ivory Silk Tree Lilac	60	-	-	WB	S
TA60	11	Tilia americana	Basswood	60	-	-	WB	M, native
ZS60	8	Zelkova serrata 'Green Vase'	Green Vase Zelkova	60	-	-	WB	M
	119	Total						

CONIFEROUS TREES

PG200	5	Picea glauca	White Spruce	-	200	-	WB	native
PPC200	10	Picea pungens 'Glauca'	Colorado Blue Spruce	-	200	-	WB	-
PSY200	5	Pinus sylvestris	Scots Pine	-	200	-	WB	-
	20	Total						

DECIDUOUS SHRUBS

HA60	111	Hydrangea arborescens 'Annabelle'	Annabelle Hydrangea	-	60	40	3 gal. pot	-
PF60	140	Potentilla fruticosa 'Goldfinger'	Goldfinger Potentilla	-	60	30	3 gal. pot	-
RA60	109	Rhus aromatica 'Gro-Low'	Dwarf Fragrant Sumac	-	60	40	3 gal. pot	-
SB60	80	Spiraea x bumalda 'Anthony Waterer'	Anthony Waterer Spiraea	-	60	30	3 gal. pot	-
SB60	54	Spiraea x bumalda 'Goldflame'	Goldflame Spiraea	-	60	30	3 gal. pot	-

CONIFEROUS SHRUBS

TMD50	159	Taxus x media 'Densiformis'	Dense Yew	-	-	50	CG / FP	-
TDC50	17	Thuja occidentalis 'Emerald'	Emerald Cedar	-	100	-	CG / FP	-

BROADLEAF EVERGREEN SHRUBS

BMC40	65	Buxus microphylla 'Green Mountain'	Green Mountain Boxwood	-	-	40	CG / FP	-
ETC50	19	Euonymus fortunei 'Coloratus'	Coloratus Euonymus	-	-	50	CG / FP	-

PERENNIALS AND GROUNDCOVERS

GMA	227	Geranium maculatum	Wild Geranium	-	-	-	1 gal. pot	-
HSD	867	Hemerocallis 'Stella D'Oro'	Stella D'Oro Daylily	-	-	-	1 gal. pot	-
PAT	105	Perovskia atriplicifolia	Russian Sage	-	-	-	1 gal. pot	-

GRASSES

CKF	428	Calamagrostis x 'Karl Foerster'	Feather Reed Grass	-	-	-	1 gal. pot	-
PVO	50	Panicum virgatum 'Rotschilbusch'	Rotschilbusch Switch Grass	-	-	-	1 gal. pot	-

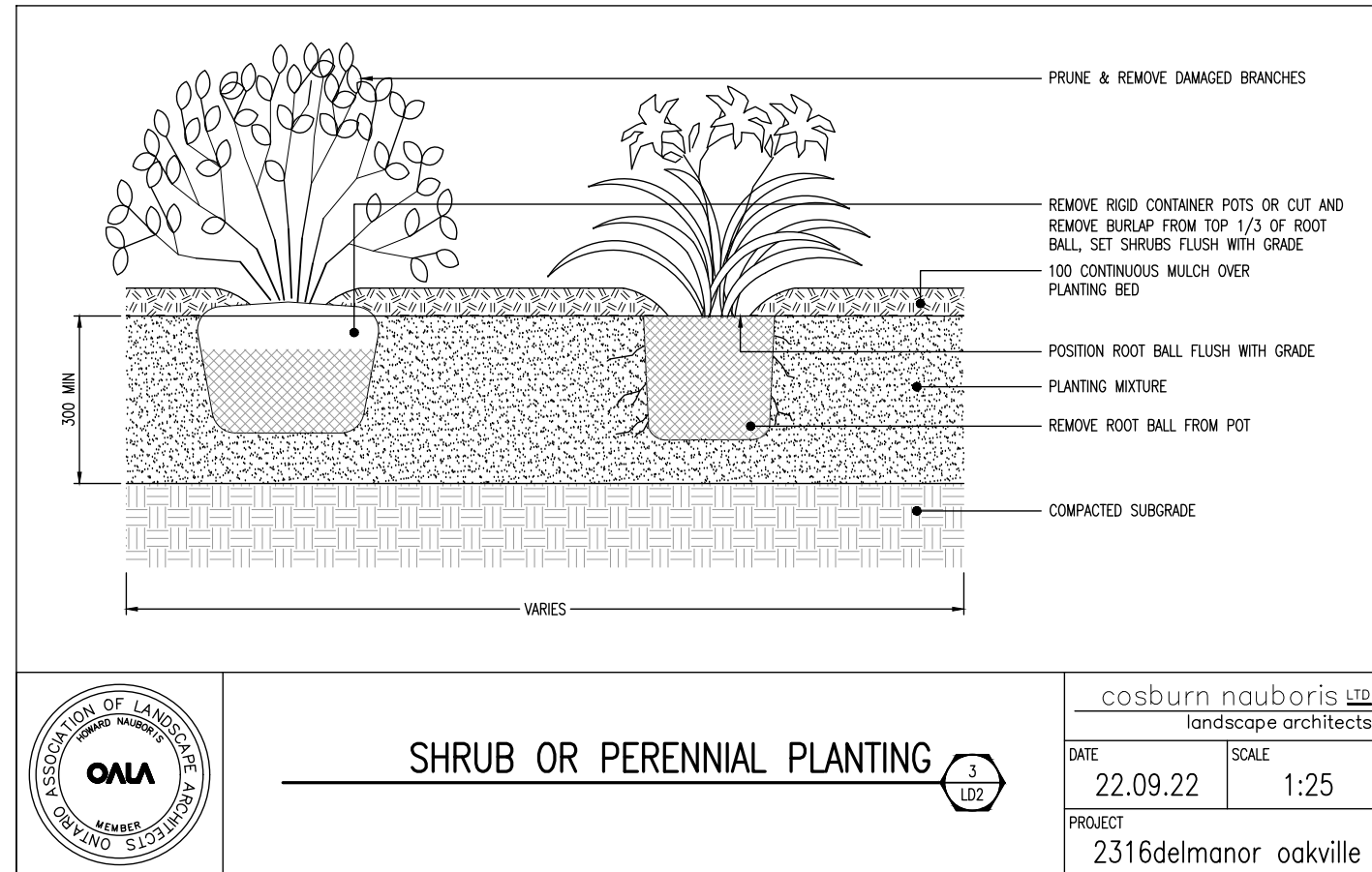
S - SMALL STATURE (3-9m MATURE SPREAD) M - MEDIUM STATURE (10-13m MATURE SPREAD) L - LARGE STATURE (14m+ MATURE SPREAD)
WB - WIRE BASKET CG - CONTAINER GROWN FP - FIELD POTTED pot - POT GROWN

STREET TREE LIST

DECIDUOUS TREES

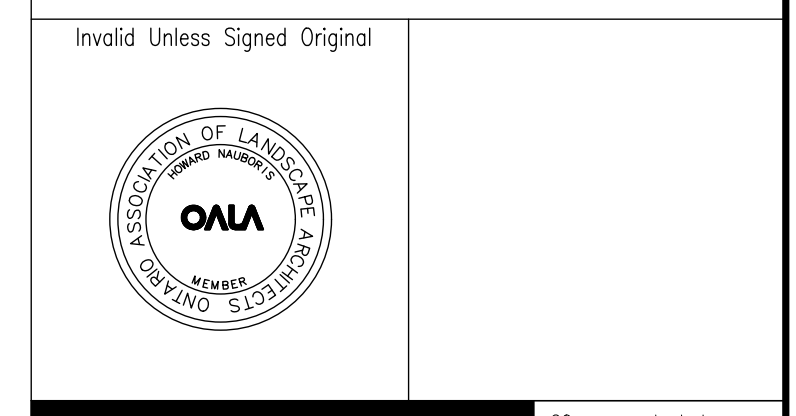
KEY	QTY.	BOTANICAL NAME	COMMON NAME	CAL. (mm)	HT. (cm)	SPREAD (cm)	ROOTS	REMARKS
AG60	4	Acer ginnala	Amur Maple	60	-	-	WB	S
PCR60	3	Pyrus calleryana 'Redspire'	Redspire Ornamental Pear	60	-	-	1 gal. pot	-

S - SMALL STATURE (3-9m MATURE SPREAD) M - MEDIUM STATURE (10-13m MATURE SPREAD) L - LARGE STATURE (14m+ MATURE SPREAD)
WB - WIRE BASKET CG - CONTAINER GROWN FP - FIELD POTTED pot - POT GROWN



2	Issued for SPA	DP	26 04 01
a	Constraints Redlined for Discussion	MB	23 02 27
1	Issued for SPA	MB	22 10 27
No	Revision	By	Yr Mo Da

All drawings and designs are the property of Cosburn Nauboris Limited and may not be used or reproduced without permission. This drawing must not be scaled.



cosburn nauboris LTD
landscape architects
20 crown steel dr. suite 2 1955 9th on 13r 9x9 4443 cosburnnauboris.ca

OAKVILLE SENIOR RESIDENCE
2500 - 2580 FOURTH LINE
TOWN OF OAKVILLE
DELMANOR WEST OAK INC.

DETAILS

Drawn by	MB	Scale	AS SHOWN
Checked by	HN	Plot Date	2026-05-07
Approved by	HN	Project	2316

LD2
Drawing No.