

LEGEND

Tree Inventory
Refer to Table 1 of the report dated 19 July 2022, revised 7 September 2022. Trees greater than 15cm DBH on and within six metres of the subject property were included in the inventory.

Tree Removals
The removal of 39 trees will be required to removal to accommodate the proposed development and/or due to their condition as indicated with RED and ORANGE labels.

Tree Preservation
Preservation of the remaining trees will be possible with appropriate tree protection measures. Trees identified for preservation are indicated with GREEN labels. Tree protection measures must be implemented prior to the construction phase. Minimum tree preservation zones and required tree preservation fencing is indicated in MAGENTA. Refer to Tree Protection Plan Notes for preservation details.

Tree Label (GREEN), preservation recommended **X**

Tree Label (RED), removal required **X**

Tree Label (ORANGE), removal recommended due to condition **X**

minimum Tree Protection Zone (MAGENTA circle)

Location of required Tree Preservation Fencing (thick MAGENTA)

Tree location estimated by KFCI

TREE PROTECTION PLAN NOTES

- It is the applicants' responsibility to discuss potential impacts to trees located near or wholly on adjacent properties or on shared boundary lines with their neighbours. Should such trees be injured to the point of instability or death the applicant may be held responsible through civil action. The applicant would also be required to replace such trees to the satisfaction of Urban Forestry.
- Tree protection barriers shall be installed to standards as detailed in this document and to the satisfaction of Urban Forestry.
- Tree protection barriers must be installed using plywood clad hoarding (minimum 19mm or 3/4" thick) or an equivalent approved by Urban Forestry.
- Where required, signs as specified in Section 4, Tree Protection Signage must be attached to all sides of the barrier.
- Prior to the commencement of any site activity such as site alteration, demolition or construction, the tree protection measures specified on this plan must be installed to the satisfaction of Urban Forestry.
- Once all tree/site protection measures have been installed, Urban Forestry staff must be contacted to arrange for an inspection of the site and approval of the tree/site protection requirements. Photographs that clearly show the installed tree/site protection shall be provided for Urban Forestry review.
- Where changes to the location of the approved TPZ or sediment control or where temporary access to the TPZ is proposed, Urban Forestry must be contacted to obtain approval prior to alteration.
- Tree protection barriers must remain in place and in good condition during demolition, construction and/or site disturbance, including landscaping, and must not be altered, moved or removed until authorized by Urban Forestry.
- No construction activities including grade changes, surface treatments or excavation of any kind are permitted within the area identified on the Tree Protection Plan as a tree protection zone (TPZ). No root cutting is permitted. No storage of materials or fill is permitted within the TPZ. No movement or storage of vehicles or equipment is permitted within the TPZ. The area(s) identified as a TPZ must be protected and remain undisturbed at all times.
- All additional tree protection or preservation requirements, above and beyond the installation of tree protection barriers, must be undertaken or implemented as detailed in the Urban Forestry approved arborist report and/or the approved tree protection plan and to the satisfaction of Urban Forestry.
- If the minimum tree protection zone (TPZ) must be reduced to facilitate construction access, the tree protection barriers must be maintained at a lesser distance and the exposed portion of TPZ must be protected using a horizontal root protection method approved by Urban Forestry.
- Any roots or branches indicated on this plan which require pruning, as approved by Urban Forestry, must be pruned by an arborist. All pruning of tree roots and branches must be in accordance with good arboricultural practice. Roots that have received approval from Urban Forestry to be pruned must first be exposed using pneumatic (air) excavation, by hand digging or by a using low pressure hydraulic (water) excavation. The water pressure for hydraulic excavation must be low enough that root bark is not damaged or removed. This will allow a proper pruning cut and minimize staining of the roots. The arborist retained to carry out crown or root pruning must contact Urban Forestry no less than three working days prior to conducting any specified work.
- The applicant/owner shall protect all by-law regulated trees in the area of consideration that have not been approved for removal throughout development works to the satisfaction of Urban Forestry.
- Convictions of offences respecting the regulations in the Street Tree By-law and Private Tree By-law are subject to fines. A person convicted of an offence under these by-laws is liable to a minimum fine of \$500 and a maximum fine of \$100,000 per tree, and for a Special Fine of \$100,000. The landowner may be ordered by the City to stop the contravening activity or ordered to undertake work to correct the contravention.
- Prior to site disturbance the owner must confirm that no migratory birds are making use of the site for nesting. The owner must ensure that the works are in conformance with the Migratory Bird Convention Act and that no migratory bird nests will be impacted by the proposed work no less than 48 hours prior to conducting any specified work.

No.	Issue/Revisions	Date	By
1	Report Submission	19 July '22	CB
2	Report Submission	7 Sept. '22	CB

Base Data: J.D. Barnes Ltd. (topo)

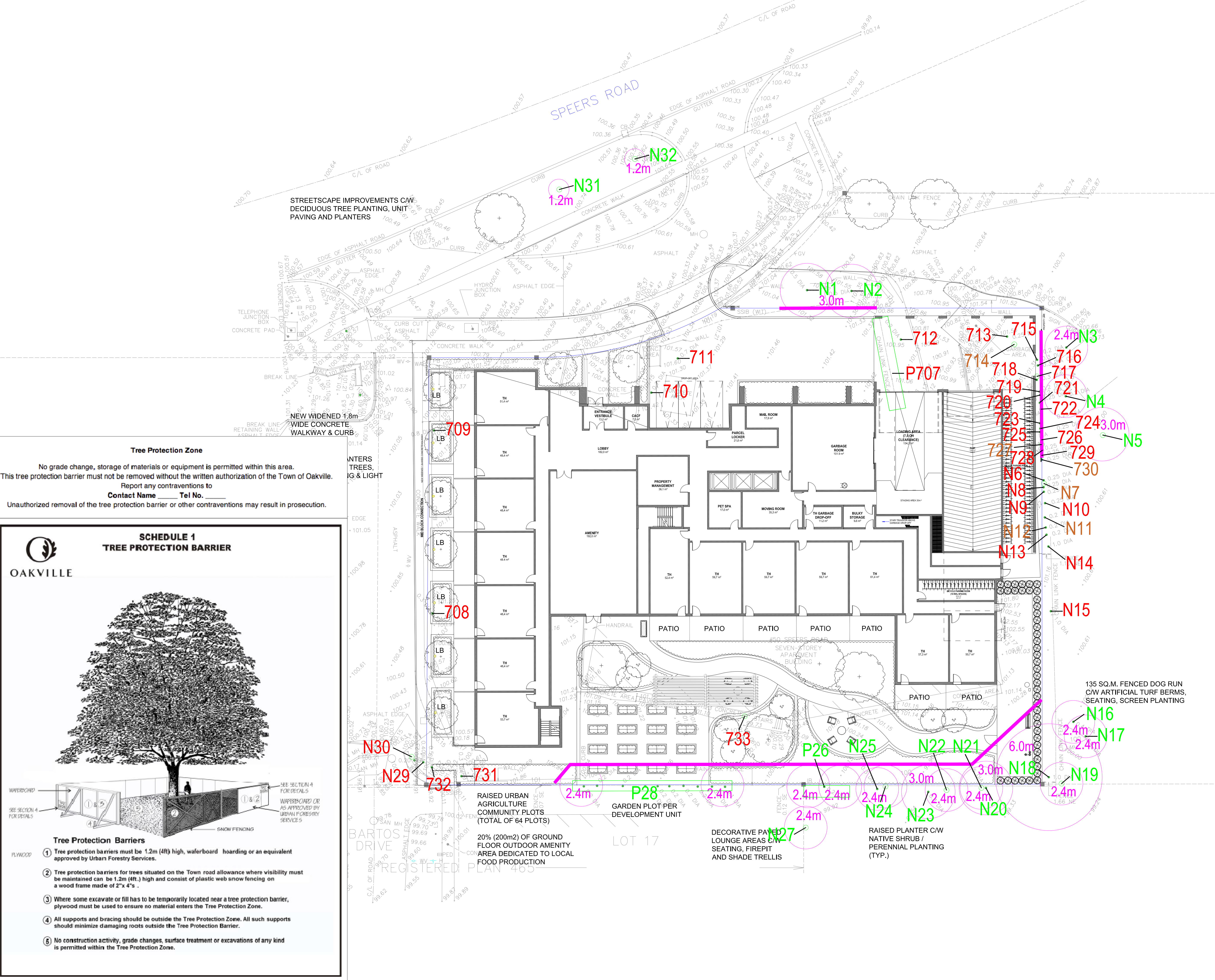
KUNTZ FORESTRY CONSULTING Inc.
146 Lakeshore Road West
PO Box 1267 Lakeshore W PO
Oakville ON L6K 0B3
Tel: 289.837.1871
e: consult@kuntzforestry.ca
web: www.kuntzforestry.ca

Client
Helberg Properties Limited c/o Arcanos Property Management Corporation
542 Mount Pleasant Road, Suite 302
Toronto, ON M4S 2M7

Property
50 Speers Road
Oakville, ON

Title
Tree Inventory and Preservation Plan

Project	P2759	Figure	1
Date	19 July 2022		
Scale	1:200		



Tree Protection Zone

No grade change, storage of materials or equipment is permitted within this area. This tree protection barrier must not be removed without the written authorization of the Town of Oakville. Report any contraventions to Contact Name _____ Tel No. _____ Unauthorized removal of the tree protection barrier or other contraventions may result in prosecution.

OAKVILLE

SCHEDULE 1 TREE PROTECTION BARRIER

Tree Protection Barriers

- Tree protection barriers must be 1.2m (4ft) high, waferboard hoarding or an equivalent approved by Urban Forestry Services.
- Tree protection barriers for trees situated on the Town road allowance where visibility must be maintained can be 1.2m (4ft.) high and consist of plastic web snow fencing on a wood frame made of 2"x 4"s.
- Where some excavate or fill has to be temporarily located near a tree protection barrier, plywood must be used to ensure no material enters the Tree Protection Zone.
- All supports and bracing should be outside the Tree Protection Zone. All such supports should minimize damaging roots outside the Tree Protection Barrier.
- No construction activity, grade changes, surface treatment or excavations of any kind is permitted within the Tree Protection Zone.

RAISED URBAN AGRICULTURE COMMUNITY PLOTS (TOTAL OF 64 PLOTS)

20% (200m2) OF GROUND FLOOR OUTDOOR AMENITY AREA DEDICATED TO LOCAL FOOD PRODUCTION

GARDEN PLOT PER DEVELOPMENT UNIT

DECORATIVE PAVED LOUNGE AREAS C/W SEATING, FIREPIT AND SHADE TRELLIS

RAISED PLANTER C/W NATIVE SHRUB / PERENNIAL PLANTING (TYP.)

135 SQ.M. FENCED DOG RUN C/W ARTIFICIAL TURF BERMS, SEATING, SCREEN PLANTING