

TOPOGRAPHIC INFORMATION
 TOPOGRAPHIC INFORMATION PROVIDED BY R-PE SURVEYING LTD.,
 JOB No. 19-019, TOPOGRAPHIC SURVEY DATED NOVEMBER 27, 2021
 CONTOUR RECEIVED ON MAY 09, 2008.

SITE PLAN INFORMATION
 SITE PLAN PROVIDED BY KNYMH INC., JOB No. 22404, DATED FEBRUARY 14, 2025.

BENCHMARK NOTE
 ELEVATIONS ARE GEODETIC AND ARE REFERRED TO MINISTRY OF TRANSPORTATION ONTARIO
 FIRST-ORDER VERTICAL BENCH MARK NUMBER C08114 HAVING AN ORTHOMETRIC ELEVATION
 OF 188.594 METRES. ELEVATIONS ARE REFERRED TO THE CANADIAN GEODETIC VERTICAL
 DATUM OF 1929. 1978 ADJUSTMENT (CGD-1929/78).
 THE ABOVE MENTIONED WATER LEVELS ARE ABOVE THE STM CONSTRUCTION POINT INVERT
 ELEVATION OF 188.817. THIS INFORMATION HAS BEEN PROVIDED TO THE MECHANICAL DESIGNER FOR THEIR
 PURPOSES. IN EVENT FREQUENCY HAS BEEN USED FOR STM SYSTEM DESIGN.

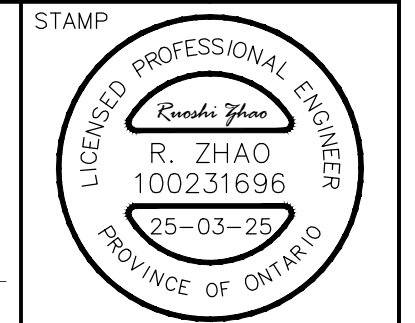
No.	DATE	BY	R.Z.	CHECKED BY:	R.Z.	DATE
5.	25-03-25	R.Z.	ISSUED FOR CONSTRUCTION			
4.	24-03-07	R.Z.	REVISED SWALE NORTH OF PARKING GARAGE			
3.	23-12-07	R.Z.	3rd SUBMISSION			
2.	23-08-31	D.A.	2nd SUBMISSION			
1.	23-05-17	R.Z.	1st SUBMISSION			

DESIGNED BY:	R.Z.	CHECKED BY:	R.Z.	DATE	APRIL 2023
DRAWN BY:	T.H.	CHECKED BY:	D.A.		
SCALE	HORIZ 1:500			REFERENCES	

APPROVALS		FIELD NOTES
MUNICIPAL APPROVAL	APPROVED IN PRINCIPLE SUBJECT TO DETAIL CONSTRUCTION CONFORMING TO TOWN OF OAKVILLE STANDARDS AND SPECIFICATIONS	BELL <input type="checkbox"/> HYDRO <input type="checkbox"/>
MANAGER OF DEVELOPMENT SERVICES	DATE	GAS <input type="checkbox"/> CABLE <input type="checkbox"/>
		TRAFFIC <input type="checkbox"/> WATER <input type="checkbox"/>

REGIONAL APPROVAL
 APPROVED DESIGN OF SANITARY, WATER SERVICES AND REGIONAL ROAD WORKS SUBJECT TO DETAIL CONSTRUCTION CONFORMING TO HALTON REGION STANDARDS & SPECIFICATIONS & LOCATION APPROVAL FROM AREA MUNICIPALITY

LEGISLATIVE AND PLANNING SERVICES DATE



DSEL
 600 Alden Road, Suite 606
 Markham, Ontario, L3R 0E7
 Tel. (905) 475-3080
 Fax. (905) 475-3081
 www.DSEL.ca

OAKVILLE
 DEVELOPMENT SERVICES

Halton
 REGION
 The Regional Municipality of Halton

BRESSA DEVELOPMENTS LTD.

DEVELOPMENT MANAGER PROJECT
mattamy HOMES **BRESSA DUC PHASE 2**
 3006 WILLIAM CUTMORE BOULEVARD & 1415 DUNDAS STREET EAST

TITLE **STORM DRAINAGE PLAN** © DSEL

MUNICIPAL FILE NO. **SP-1305.002/01** REGIONAL FILE NO. **DO-XXXX**

PROJECT NO. **23-1342** SHEET **5** OF **6**

LEGEND

	DRAINAGE AREA IN HECTARES
	EXTERNAL DRAINAGE AREA IN HECTARES
	SINGLE CATCHBASIN
	DOUBLE CATCHBASINS
	OVERLAND FLOW DIRECTION
	EXTERNAL OVERLAND FLOW DIRECTION
	EXTERNAL STORM TRIBUTARY BOUNDARY
	PHASE LINE
	NOT PART OF THIS APPROVAL APPLICATION