

1. Copyright of this drawing is reserved by the Architect. The drawing and all associated documents are an instrument of service by the Architect. The drawing and the information contained therein may not be reproduced in whole or in part without prior written permission of the Architect.

2. These Contract Documents are the property of the Architect. The Architect bears no responsibility for the interpretation of these documents by the Contractor. Upon written application, the Architect will provide written clarification or supplementary information regarding the intent of the Contract Documents. The Architect will review Shop Drawings submitted by the Contractor for design conformance only.

3. Drawings are not to be scaled for construction. The Contractor is to verify all existing conditions and dimensions required to perform the work and report any discrepancies with the Contract Documents to the Architect before commencing any work.

4. Positions of exposed finished mechanical or electrical devices, fittings, and fixtures are indicated on architectural drawings. The locations shown on the architectural drawings govern over the Mechanical and Electrical drawings. Those items not clearly located will be located as directed by the Architect.

5. These drawings are not to be used for construction unless noted below as "Issuance: For Construction".

6. All work is to be carried out in conformance with the Code and Bylaws of the authorities having jurisdiction.

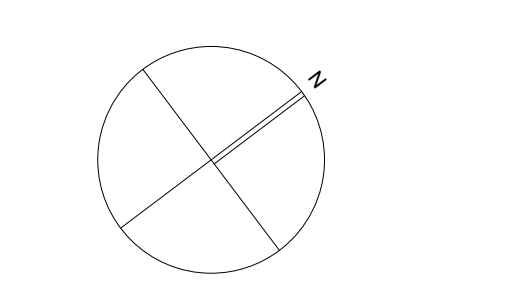
7. The Architect of these plans and specifications gives no warranty or representation to any party about the constructability of the building(s) represented by them. All contractors or subcontractors must satisfy themselves when bidding and at all times ensure that they can properly construct the work represented by these plans.

© architectsAlliance, 2018

NO	ISSUANCE	DATE
1	SPA #1	JULY 06 2020
2		
3		
4		
5		
6		
7		
8		
9		



architectsAlliance
 205-317 Adelaide St. West
 Toronto, Ontario M5V 1P9
 t 416 593 6500
 f 416 593 4911
 info: architectsalliance.com

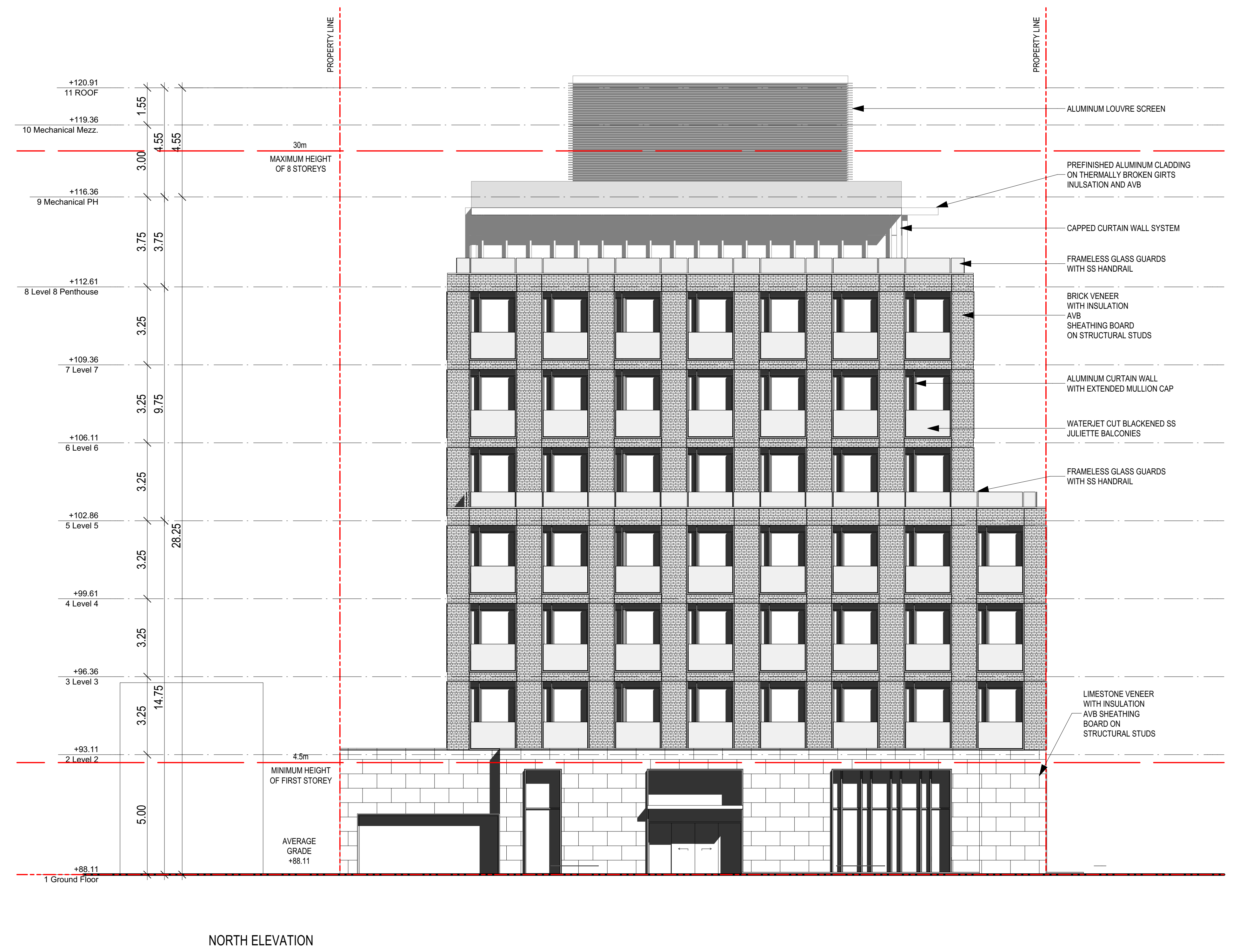


JRB-109 REYNOLDS HOLDINGS LTD
109 REYNOLDS STREET
OAKVILLE

Elevation North

1:100
 2020-07-03

A_22



Printed On: July 3, 2020

B:\cloud\Olga - BIM\cloud Basic for ARCH\CAD 22\21932-109 Reynolds_Oakville\109 Reynolds - 04

1. Copyright of this drawing is reserved by the Architect. The drawing and all associated documents are an instrument of service by the Architect. The drawing and the information contained therein may not be reproduced in whole or in part without prior written permission of the Architect.

2. These Contract Documents are the property of the Architect. The Architect bears no responsibility for the interpretation of these documents by the Contractor. Upon written application, the Architect will provide written clarification or supplementary information regarding the intent of the Contract Documents. The Architect will review Shop Drawings submitted by the Contractor for design conformance only.

3. Drawings are not to be scaled for construction. The Contractor is to verify all existing conditions and dimensions required to perform the work and report any discrepancies with the Contract Documents to the Architect before commencing any work.

4. Positions of exposed finished mechanical or electrical devices, fittings, and fixtures are indicated on architectural drawings. The locations shown on the architectural drawings govern over the Mechanical and Electrical drawings. Those items not clearly located will be located as directed by the Architect.

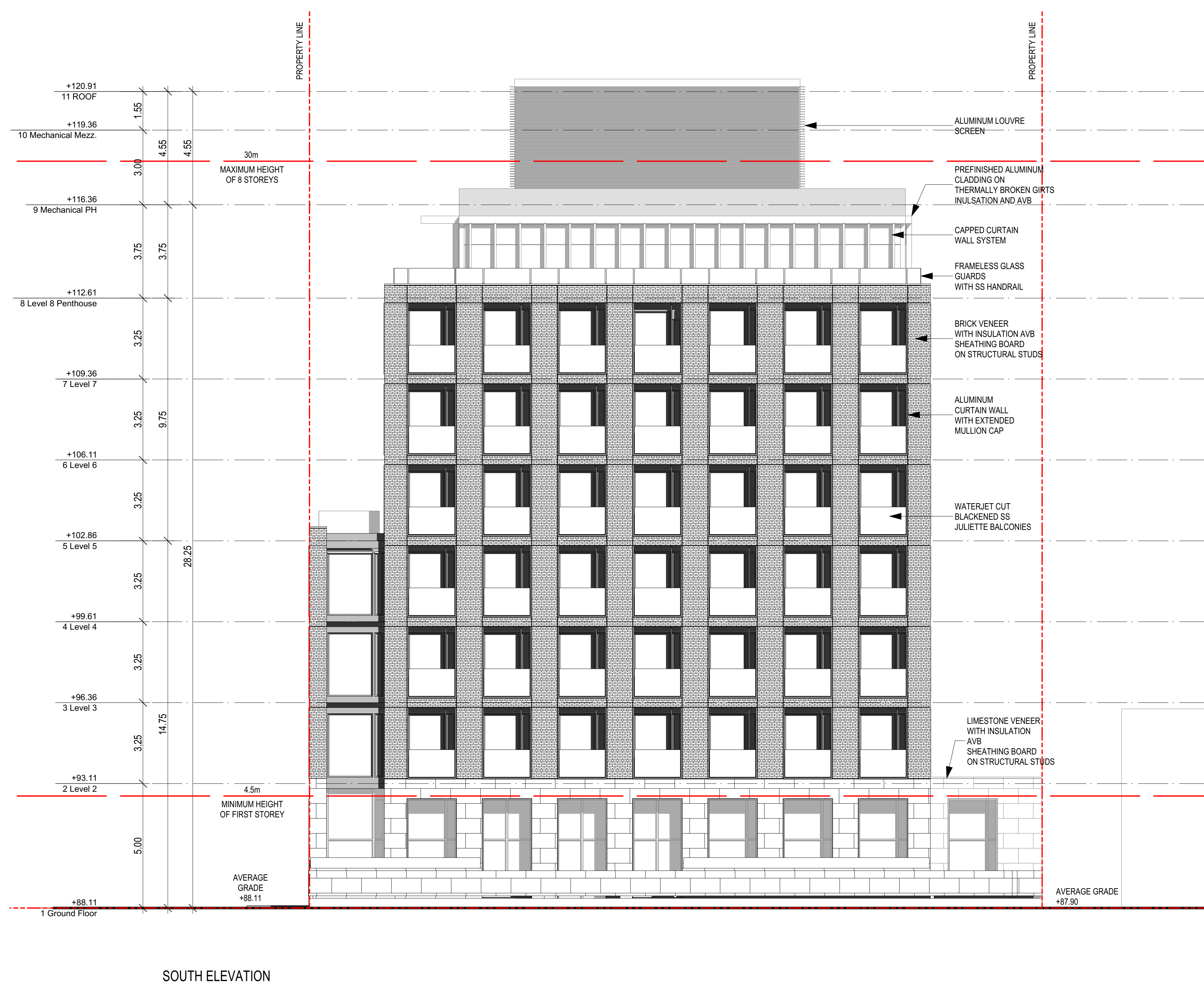
5. These drawings are not to be used for construction unless noted below as "Issuance: For Construction".

6. All work is to be carried out in conformance with the Code and Bylaws of the authorities having jurisdiction.

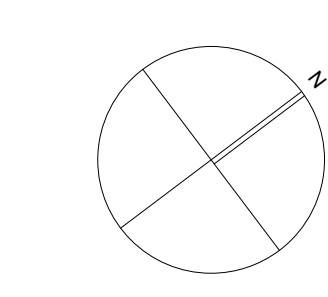
7. The Architect of these plans and specifications gives no warranty or representation to any party about the constructability of the building(s) represented by them. All contractors or subcontractors must satisfy themselves when bidding and at all times ensure that they can properly construct the work represented by these plans.

© architectsAlliance, 2018

NO	ISSUANCE	DATE
1	SPA #1	JULY 06 2020
2		
3		
4		
5		
6		
7		
8		
9		



architectsAlliance
 205-317 Adelaide St. West
 Toronto, Ontario M5V 1P9
 t 416 593 6500
 f 416 593 4911
 info: architectsalliance.com



JRB-109 REYNOLDS HOLDINGS LTD
 109 REYNOLDS STREET
 OAKVILLE

Elevation South

1:100
 2020-07-03

A_23

Printed On: July 3, 2020

BMcloud: Olga - BMcloud Basic for ARCHICAD 22/21932-109 Reynolds_Oakville/109 Reynolds - 04

1. Copyright of this drawing is reserved by the Architect. The drawing and all associated documents are an instrument of service by the Architect. The drawing and the information contained therein may not be reproduced in whole or in part without prior written permission of the Architect.

2. These Contract Documents are the property of the Architect. The Architect bears no responsibility for the interpretation of these documents by the Contractor. Upon written application, the Architect will provide written clarification or supplementary information regarding the intent of the Contract Documents. The Architect will review Shop Drawings submitted by the Contractor for design conformance only.

3. Drawings are not to be scaled for construction. The Contractor is to verify all existing conditions and dimensions required to perform the work and report any discrepancies with the Contract Documents to the Architect before commencing any work.

4. Positions of exposed finished mechanical or electrical devices, fittings, and fixtures are indicated on architectural drawings. The locations shown on the architectural drawings govern over the Mechanical and Electrical drawings. Those items not clearly located will be located as directed by the Architect.

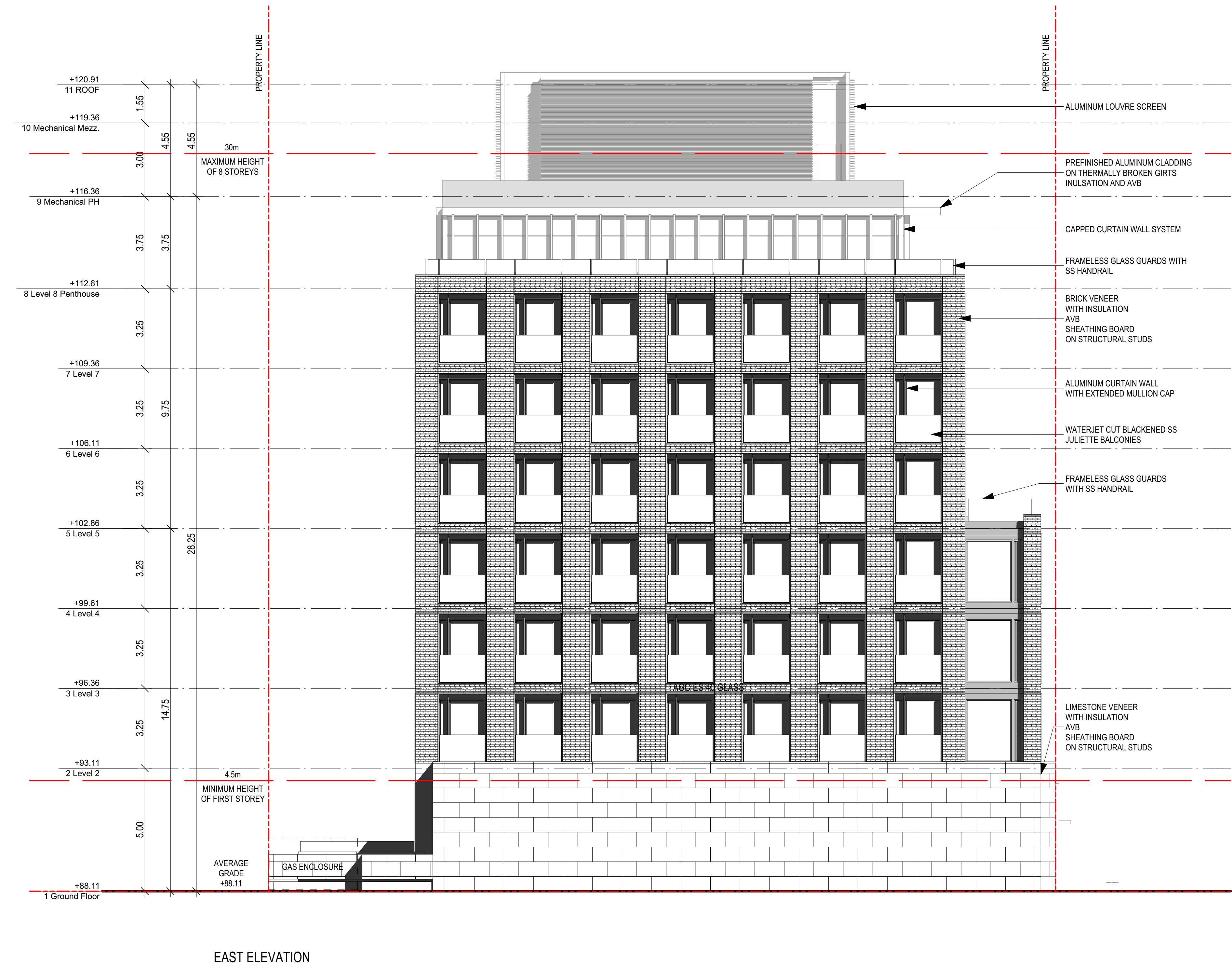
5. These drawings are not to be used for construction unless noted below as "Issuance: For Construction".

6. All work is to be carried out in conformance with the Code and Bylaws of the authorities having jurisdiction.

7. The Architect of these plans and specifications gives no warranty or representation to any party about the constructability of the building(s) represented by them. All contractors or subcontractors must satisfy themselves when bidding and at all times ensure that they can properly construct the work represented by these plans.

© architectsAlliance, 2018

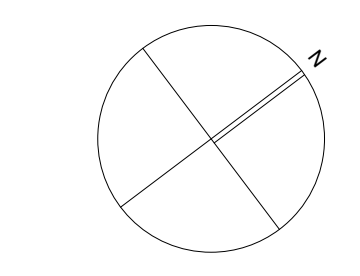
NO	ISSUANCE	DATE
1	SPA #1	JULY 06 2020
2		
3		
4		
5		
6		
7		
8		
9		



EAST ELEVATION



architectsAlliance
 205-317 Adelaide St. West
 Toronto, Ontario M5V 1P9
 t 416 593 6500
 f 416 593 4911
 info: architectsalliance.com



JRB-109 REYNOLDS HOLDINGS LTD
 109 REYNOLDS STREET
 OAKVILLE

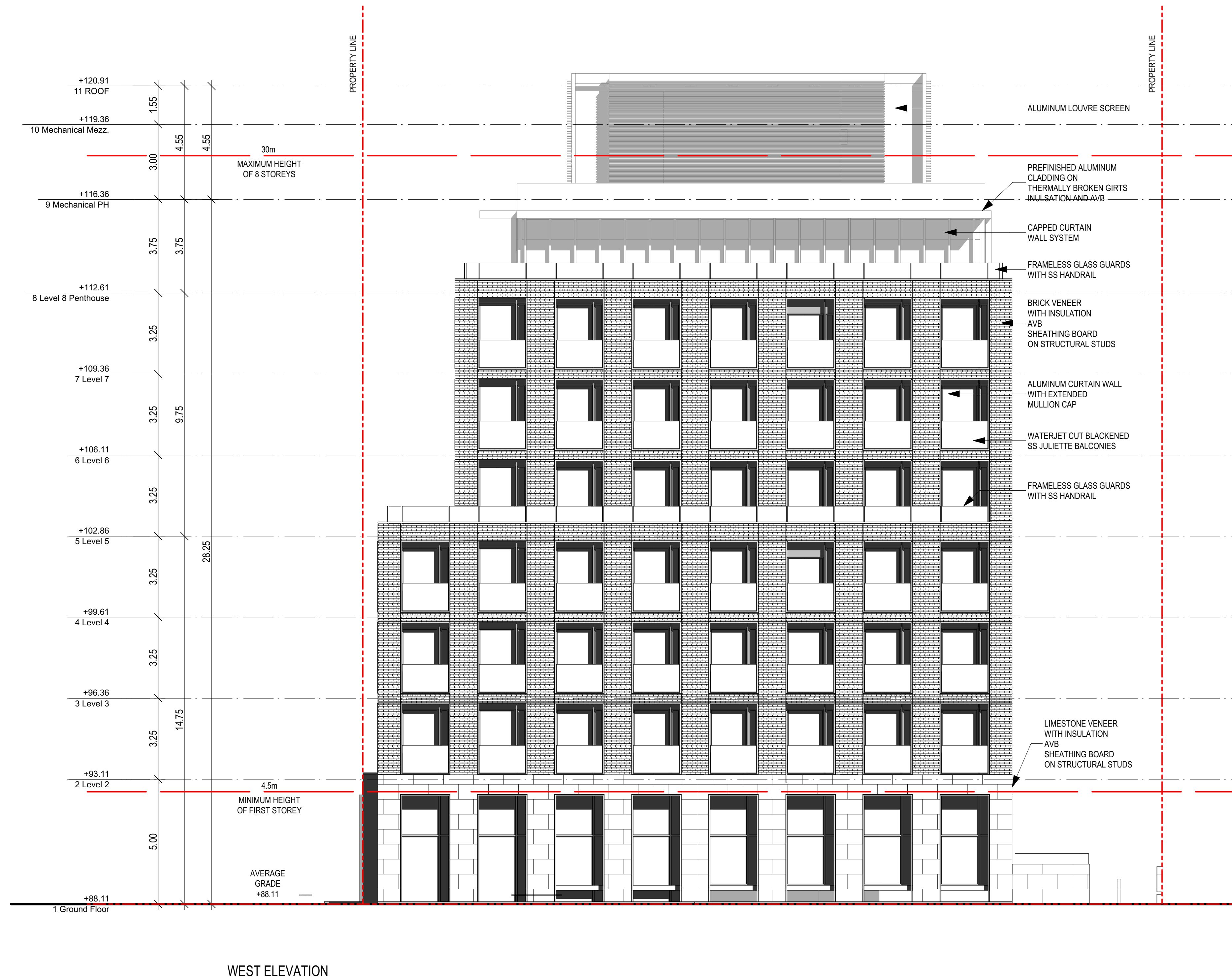
Elevation East

1:100
 2020-07-03

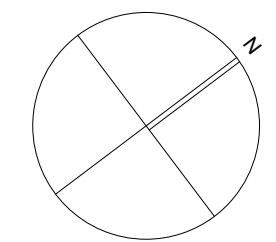
A_24

1. Copyright of this drawing is reserved by the Architect. The drawing and all associated documents are an instrument of service by the Architect. The drawing and the information contained therein may not be reproduced in whole or in part without prior written permission of the Architect.
 2. These Contract Documents are the property of the Architect. The Architect bears no responsibility for the interpretation of these documents by the Contractor. Upon written application, the Architect will provide written clarification or supplementary information regarding the intent of the Contract Documents. The Architect will review Shop Drawings submitted by the Contractor for design conformance only.
 3. Drawings are not to be scaled for construction. The Contractor is to verify all existing conditions and dimensions required to perform the work and report any discrepancies with the Contract Documents to the Architect before commencing any work.
 4. Positions of exposed finished mechanical or electrical devices, fittings, and fixtures are indicated on architectural drawings. The locations shown on the architectural drawings govern over the Mechanical and Electrical drawings. Those items not clearly located will be located as directed by the Architect.
 5. These drawings are not to be used for construction unless noted below as "Issuance: For Construction".
 6. All work is to be carried out in conformance with the Code and Bylaws of the authorities having jurisdiction.
 7. The Architect of these plans and specifications gives no warranty or representation to any party about the constructability of the building(s) represented by them. All contractors or subcontractors must satisfy themselves when bidding and at all times ensure that they can properly construct the work represented by these plans.
- © architectsAlliance, 2018

NO	ISSUANCE	DATE
1		JULY 06 2020
2	SPA #1	
3		
4		
5		
6		
7		
8		
9		



architectsAlliance
 205-317 Adelaide St. West
 Toronto, Ontario M5V 1P9
 t 416 593 6500
 f 416 593 4911
 info: architectsalliance.com



JRB-109 REYNOLDS HOLDINGS LTD
 109 REYNOLDS STREET
 OAKVILLE

Elevations West

1:100

2020-07-03

A_25