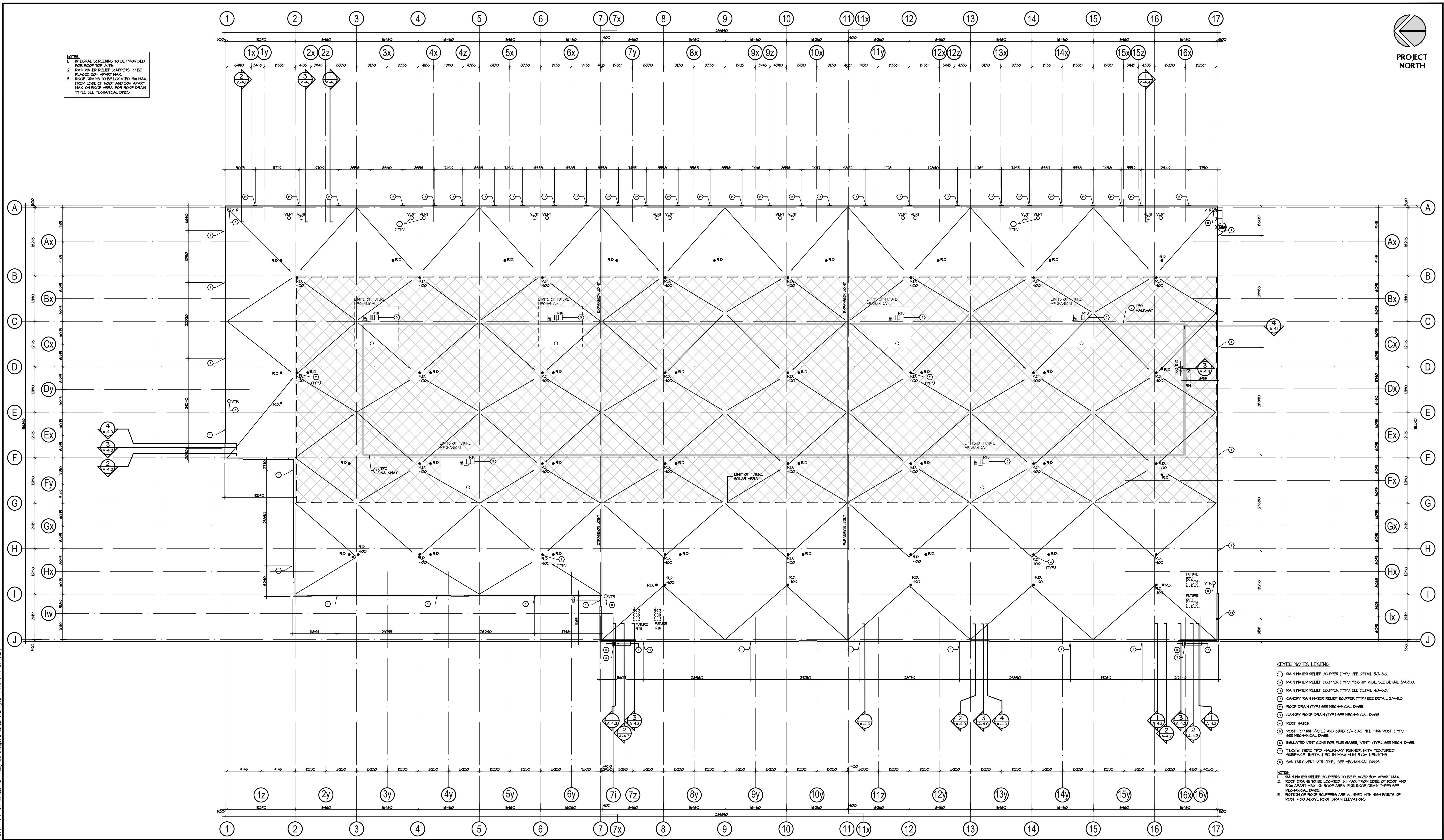


NOTES:
 1. INTEGRAL SCREENING TO BE PROVIDED FOR ROOF TOP UNITS.
 2. RAIN WATER RELIEF SCUPPERS TO BE PLACED 50M APART MAX.
 3. ROOF DRAINS TO BE LOCATED 5M MAX FROM EDGE OF ROOF AND 50M APART MAX ON ROOF AREA. FOR ROOF DRAIN TYPES SEE MECHANICAL DWGS.



- KEYED NOTES LEGEND**
- ① RAIN WATER RELIEF SCUPPER (TYP). SEE DETAIL 3/A-5.0.
 - ② RAIN WATER RELIEF SCUPPER (TYP). 100mm WIDE. SEE DETAIL 3/A-5.0.
 - ③ RAIN WATER RELIEF SCUPPER (TYP). SEE DETAIL 4/A-5.0.
 - ④ CANOPY RAIN WATER RELIEF SCUPPER (TYP) SEE DETAIL 2/A-5.0.
 - ⑤ ROOF DRAIN (TYP) SEE MECHANICAL DWGS.
 - ⑥ CANOPY ROOF DRAIN (TYP) SEE MECHANICAL DWGS.
 - ⑦ ROOF HATCH
 - ⑧ ROOF TOP UNIT (RTU) AND CURB C/W GAS PIPE THRU ROOF (TYP). SEE MECHANICAL DWGS.
 - ⑨ INSULATED VENT CONE FOR FLUE GASES, VENT (TYP). SEE MECH DWGS.
 - ⑩ 160mm WIDE TPO WALKWAY RUNNER WITH TEXTURED SURFACE, INSTALLED IN MAXIMUM 5.0m LENGTHS.
 - ⑪ SANITARY VENT VTR (TYP). SEE MECHANICAL DWGS.

NOTES:
 1. RAIN WATER RELIEF SCUPPERS TO BE PLACED 50M APART MAX.
 2. ROOF DRAINS TO BE LOCATED 5M MAX FROM EDGE OF ROOF AND 50M APART MAX ON ROOF AREA FOR ROOF DRAIN TYPES SEE MECHANICAL DWGS.
 3. BOTTOM OF ROOF SCUPPERS ARE ALIGNED WITH HIGH POINTS OF ROOF 100 ABOVE ROOF DRAIN ELEVATION.

No.	ISSUED	DATE
1	ISSUED FOR COORDINATION	MAR. 30, 2021
2	ISSUED FOR SPA	APR. 9, 2021
3	RE-ISSUED FOR SPA	DEC. 10, 2021
4	RE-ISSUED FOR SPA	DEC. 15, 2021
5	RE-ISSUED FOR SPA	DEC. 16, 2022

No.	ISSUED FOR STEEL AND PRECAST TENDER	DATE
6	ISSUED FOR STEEL AND PRECAST TENDER	FEB. 17, 2023
7	REISSUED FOR STEEL TENDER	SEPT. 18, 2023
8	REISSUED FOR SPA	DEC. 19, 2023

No.	REVISION	DATE
1	REVISED AS NOTED	AUG. 04, 2023

BALDASSARRA
 Architects Inc.

30 Great Gulf Drive, Unit 20 | Concord ON | L4K 0K7
 T. 905.660.0722 | www.baldassarra.ca

OWNERS INFORMATION:



772 Winston Churchill Blvd.
 Oakville, Ontario

ROOF PLAN
Building B

DATE:	DRAWN BY:	CHECKED:	SCALE:
MAR. 2021	HP		1:450
PROJECT No.	DRAWING No.		
22-77 B			A-2.1