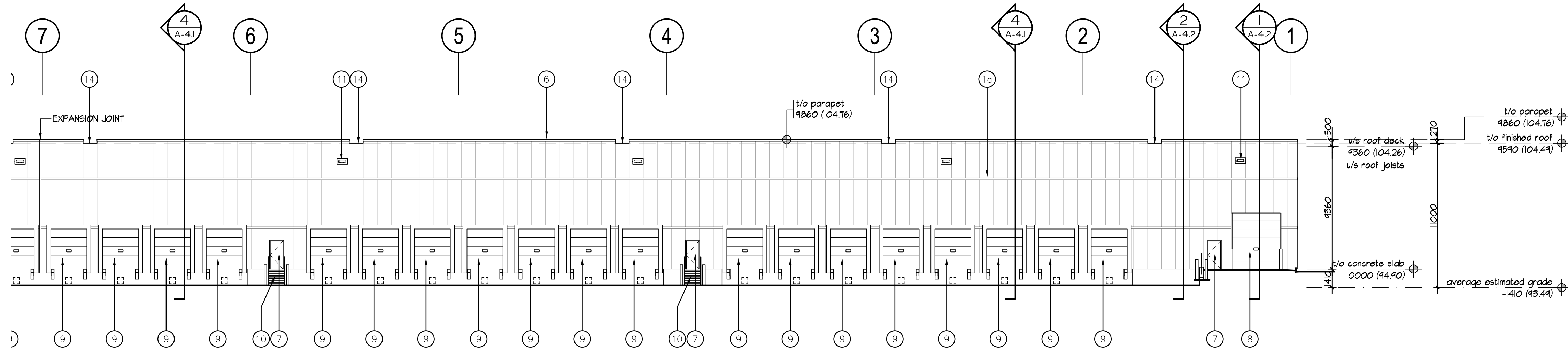


C:\1851 560 Winston Churchill\Drawings\01 Current Drawings\Bldg B\1851 B A-3.1.dwg, 2023-07-28 2:49:45 PM, Layout: AutoCAD PDF (General Documentation).pc3

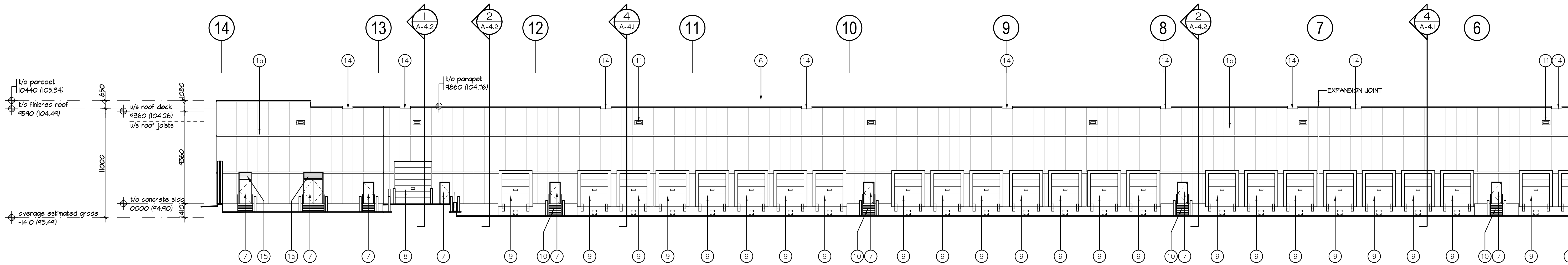
C:\BDD 250-Winston Churchill\Drawings\01 Current Drawings\Bldg B\1851 B A-3.1.dwg

- 1 INSULATED METAL PANELS BY KINGSPAN. TEXTURE TO BE FUTURE SELECTION BY ARCHITECT.
1a - COLOUR TO BE WHITE.
1b - COLOUR TO BE CHARCOAL GREY.
- 2 ALUMINUM COMPOSITE PANELS BY ALPOLIC OR APPROVED EQUAL.
2a - COLOUR TO BE CHARCOAL GREY.
2b - COLOUR TO BE GREY.
- 3 THERMAL GLAZING IN ALUMINUM CURTAIN WALL FRAMES, C/W BIRD FRIENDLY VISUAL MARKERS.
- 4 SPANDREL GLAZING IN ALUMINUM CURTAIN WALL FRAMES.
- 5 ALUMINUM AND TEMPERED THERMAL GLASS DOOR(S) IN ALUMINUM CURTAIN WALL DOOR FRAMING SYSTEM. COLOUR TO MATCH WINDOW GLAZING SYSTEM.
- 6 PRE-FINISHED METAL COPING BY VICWEST OR APPROVED EQUAL. COLOUR TO MATCH MATERIAL BELOW.
- 7 INSULATED HOLLOW METAL DOOR IN PRESSED STEEL FRAMES. COLOUR TO MATCH ADJACENT MATERIAL.
- 8 INSULATED HOLLOW METAL SECTIONAL OVERHEAD DOOR C/W 305mm x 200mm (WxH) LEXAN INSERT. 4270mm x 4880mm (WxH). COLOUR TO BE FUTURE SELECTION.
- 9 INSULATED HOLLOW METAL SECTIONAL OVERHEAD DOOR C/W DOCK SEAL, DOCK LEVELLER, DOCK BUMPERS AND 305mm x 200mm (WxH) LEXAN INSERT. 3050mm (W) X 3355mm (H). COLOUR TO BE WHITE.
- 10 STEEL GRATE EXTERIOR STAIR, PRIMED & MARINE OIL BASE PAINTED GREY.
- 11 WALL MOUNTED LIGHTING, REFER TO ELECTRICAL DRAWINGS.
- 12 FOR SCREEN WALL REFER TO THE LANDSCAPE DRAWINGS.
- 13 ROOF SCUPPER. SEE DETAIL ?/A-5.0
- 14 ROOF SCUPPER. SEE DETAIL ?/A-5.0
- 15 TRANSOM C/W LOUVRE. COORDINATE WITH MECHANICAL DRAWINGS.

GLAZING TYPE	AREA (m2)
CLEAR GLAZING	28.51
DOT PATTERN ON CLEAR GLAZING	212.05
SPANDREL GLAZING	148.46
TOTAL	389.02 m2
DOT PATTERNED GLASS + SPANDREL GLASS = 360.51 m2	
93% OF CONTIGUOUS GLASS PANEL AREA IS BIRD-FRIENDLY	



PARTIAL EAST ELEVATION AT NORTH END



PARTIAL EAST ELEVATION AT SOUTH END

No.	ISSUED	DATE
1	ISSUED FOR REVIEW	DEC. 23 2020
2	RE-ISSUED FOR SPA	MAR. 1 2021
3	RE-ISSUED FOR SPA	NOV. 25 2021
4	RE-ISSUED FOR SPA	JULY 6, 2022
5	RE-ISSUED FOR SPA 4TH RE-SUBMISSION	JULY 28, 2023

No.	REVISION	DATE
-----	----------	------

BALDASSARRA
Architects Inc.

30 Great Gulf Drive, Unit 20 | Concord ON | L4K 0K7
T: 905.860.0722 | www.baldassarra.ca

OWNERS INFORMATION:



560 Winston Churchill Blvd.

Oakville, Ontario

EAST ELEVATION Building B

DATE	DRAWN BY	CHECKED	SCALE
SEPT. 2020	jdhl/lyhp		1:200
PROJECT NO.	DRAWING NO.		

18-51 B

A-3.1 B