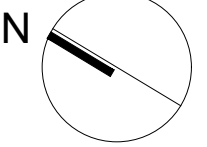


DRAFT PLAN OF SUBDIVISION

PART OF LOTS 28, 29 AND 30
CONCESSION 2, SOUTH OF DUNDAS STREET
(GEOGRAPHIC TOWNSHIP OF TRAFALGAR)
TOWN OF OAKVILLE
REGIONAL MUNICIPALITY OF HALTON

SCALE 1:2,000 METRIC
10 0 20 40 60 80 100metres



Owner's Certificate

I hereby authorize SGL Planning and Design Inc. to submit this plan for approval.

Bronte Green Corporation

DATE

Surveyor's Certificate

I hereby certify that the boundaries of the land to be subdivided as shown on this plan, and their relationship to the adjacent land are accurately and correctly shown.

R.S. Querubin
Ontario Land Surveyor

DATE

Schedule of Land Use

DESCRIPTION	LOTS / BLOCKS	AREA (ha)	UNITS
1. Residential Back to Back Towns (21) 6.40m	1-3	0.47	48
2. Residential Townhouse (3 Sty Lane) (21) 6.40m	4-10	0.65	43
3. Residential Townhouse (2 Sty Com) (25) 7.60m	11-18	1.08	46
4. Residential Townhouse (3 Sty Com) (20) 6.10m	19-23	0.51	27
5. Residential Detached Homes (35) 11.60m	24-126,178-180,187,306,505	3.71	109
6. Residential Detached Homes (35) 11.60m	181,305,463-465	0.15	5
7. Residential Detached Homes (42) 12.90m	127-177,183-186,188-288	5.80	156
8. Residential Detached Homes (45) 13.72m	182,289-304,307-405	4.92	116
9. Residential Detached Homes (50) 15.24m	406-440	1.92	35
10. Residential Detached Homes (60) 18.30m	441-462	1.49	22
11. Residential Condominium Block	466, 467, 468	2.67	498
12. Common Element Condominium Block	469	1.92	76
13. Parks / Urban Square	470-472	2.50	70
14. Storm Water Management Facility	473	1.97	1
15. Walkways	474-481, 492, 506	0.20	
16. Open Space	482	0.72	
17. Enbridge Gas	483	0.14	
18. Enhancement Area	484-489	4.24	
19. Natural Heritage System	490-491,493-494	5.85	
20. Road Right of Way		11.61	
21. Road Widening	495-496	0.28	
22. Future School/ Residential	497-499	1.48	
23. Future Residential	500-501	0.06	
24. Future Commercial	502	0.09	
25. Future School/Road	503-504	0.36	
TOTAL		54.79	1181

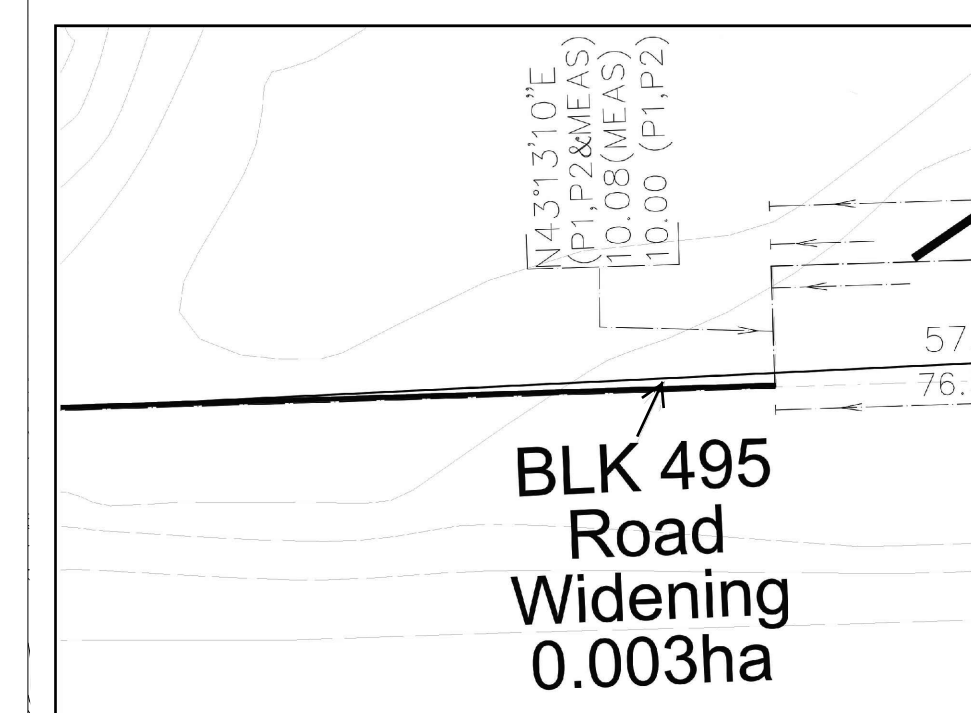
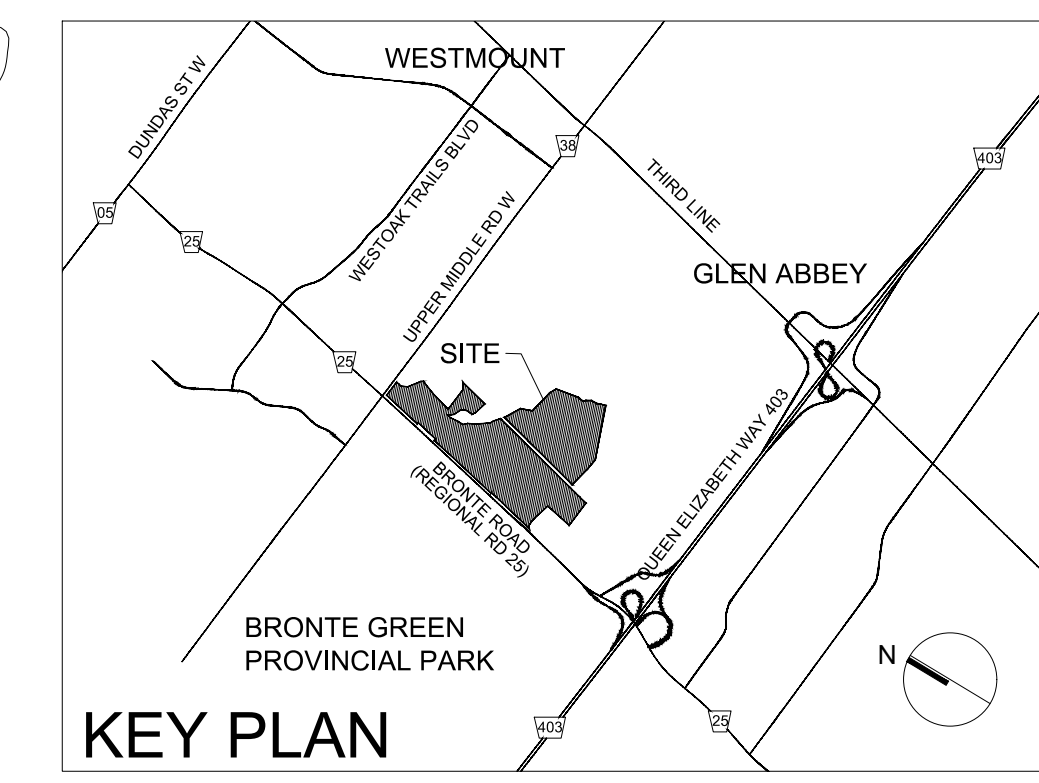
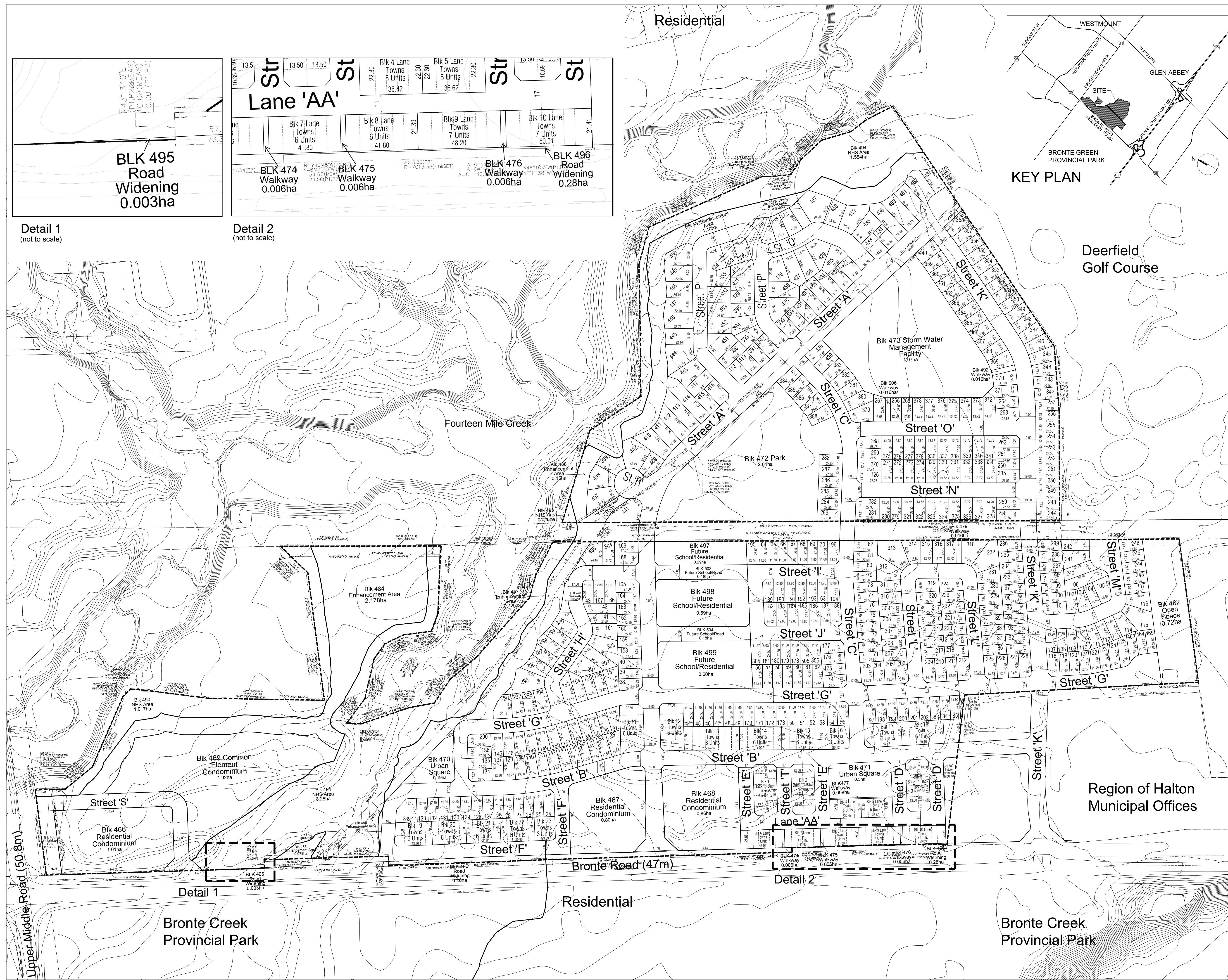
Additional Information Required Under Section 51(17) of the Planning Act R.S.O. 1990,C.P.13

- | | |
|--|-----------------------------|
| A. AS SHOWN | F. AS SHOWN |
| B. AS SHOWN | G. AS SHOWN |
| C. AS SHOWN | H. MUNICIPAL WATER SUPPLY. |
| D. RESIDENTIAL, MIXED USE, PARK, I. LOAM | J. AS SHOWN |
| STORMWATER MANAGEMENT, | K. ALL SERVICES AS REQUIRED |
| OPEN SPACE | L. AS SHOWN |
| E. AS SHOWN | |

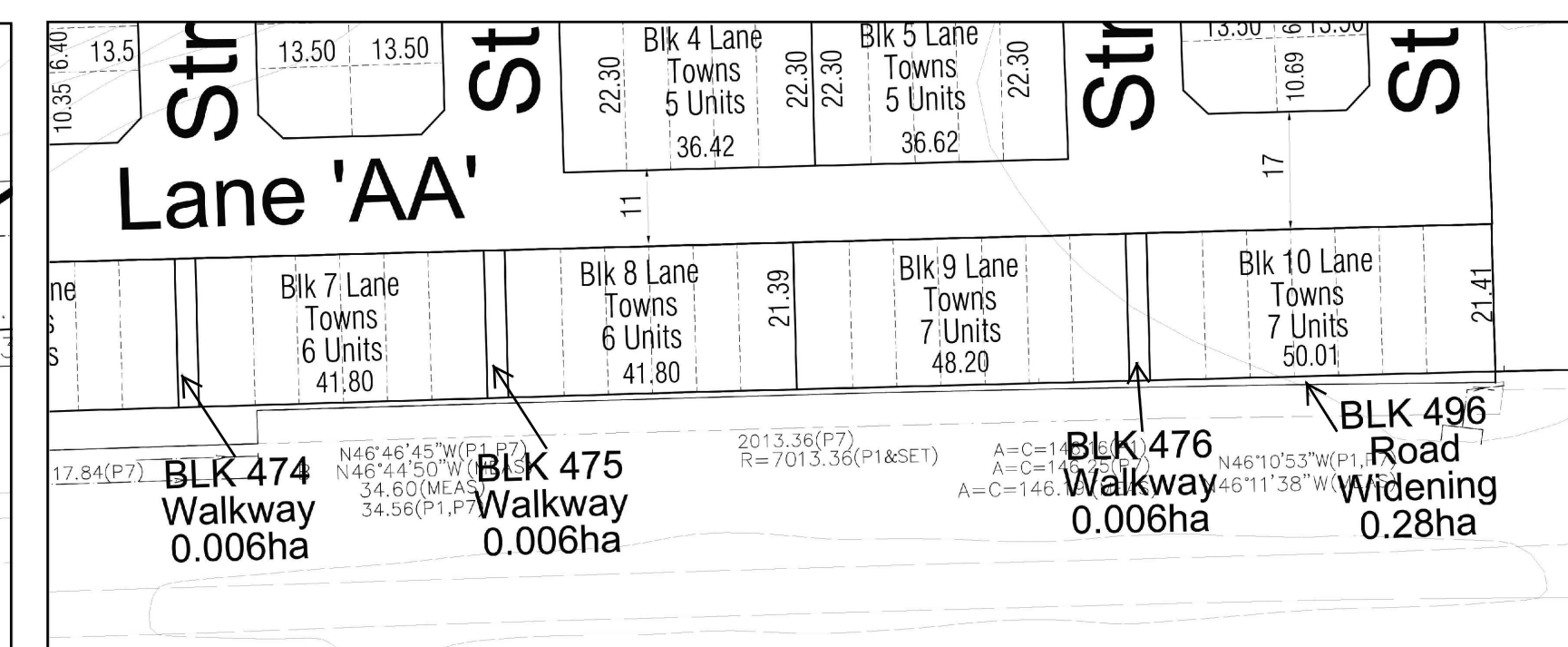
Revisions	DATE	INITIAL
Submission to Authorities	February 14 2014	PL
Submission to Authorities	April 14 2015	PL
Submission to Authorities	September 26 2016	PL
Submission to Authorities	November 10 2016	PL
Submission to Authorities	November 12 2016	PL

Date: November 12, 2016

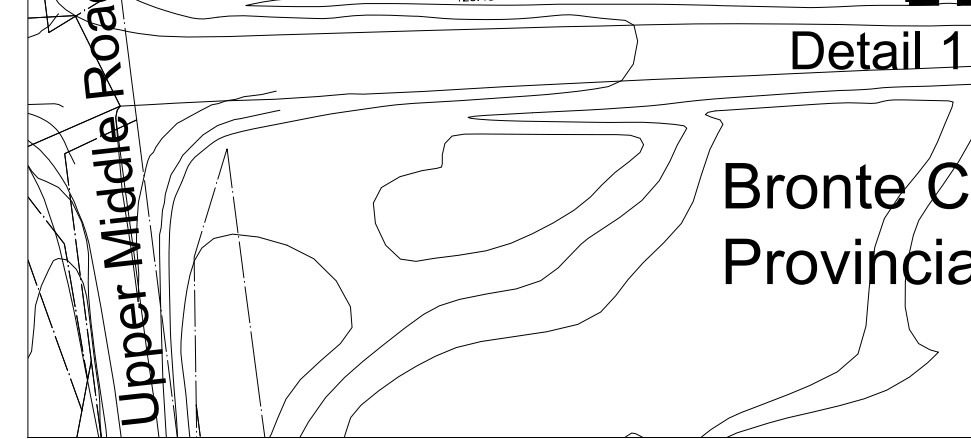
File Name: 161112(revised)_Bronte Green Draft Plan.dwg



Detail 1 (not to scale)



Detail 2 (not to scale)



Bronte Creek Provincial Park



Bronte Creek Provincial Park