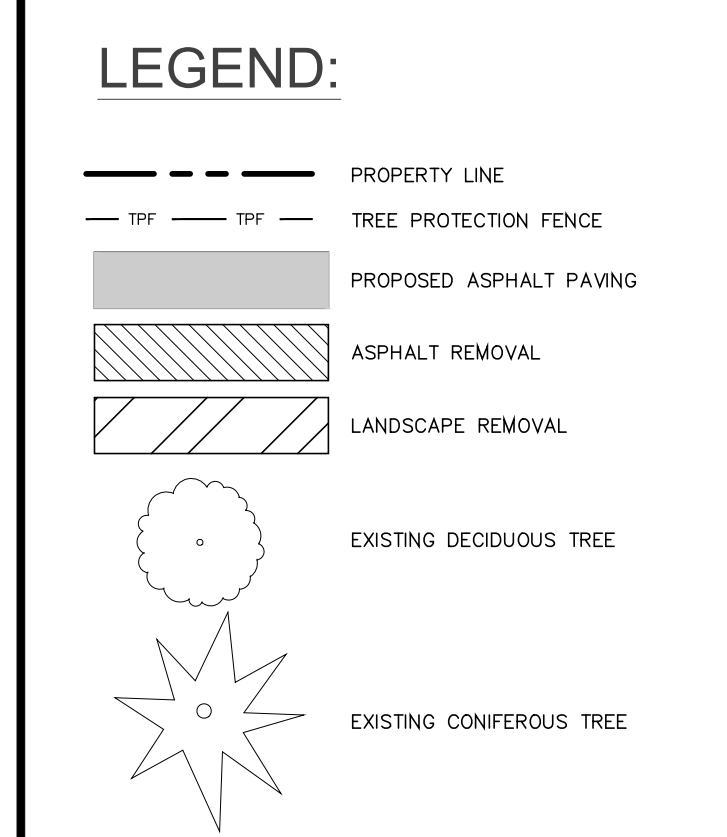


**KEY PLAN** N.T.S.

BASE INFORMATION TAKEN FROM DRAWINGS BY OTHERS. S4 DOES NOT ASSUME ANY RESPONSIBILITY FOR ERRORS, OMISSIONS OR ACCURACY OF THE INFORMATION. DRAWINGS SHALL ONLY BE USED FOR GUIDELINE PURPOSES ONLY.

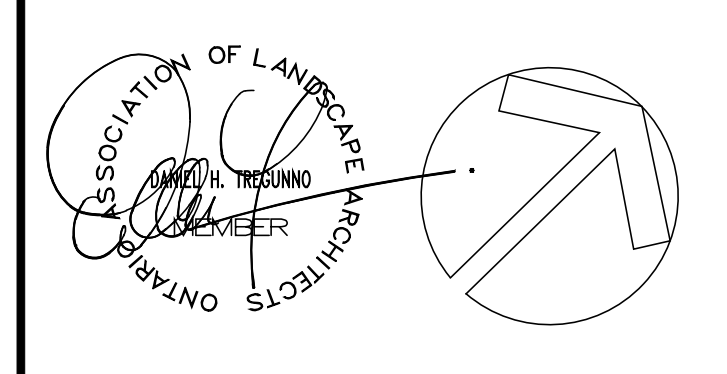


DATE	DESCRIPTION	CHECKED BY
AUG. 8 2019	ISSUED FOR SITE PLAN APPROVAL	1. JK

**REVISIONS**

DATE	DESCRIPTION	CHECKED BY
------	-------------	------------

NOTE: Contractor is to check and verify all dimensions and conditions on the project, and is immediately report any discrepancies to the landscape architect before proceeding with the work.



**THE HALTON CATHOLIC DISTRICT SCHOOL BOARD**



Project Name:  
**ST. JAMES CATHOLIC ELEMENTARY SCHOOL**  
255 MORDEN ROAD, OAKVILLE

Sheet Description:  
**SITE PLAN 'ASPHALT & RE-GRADING'**

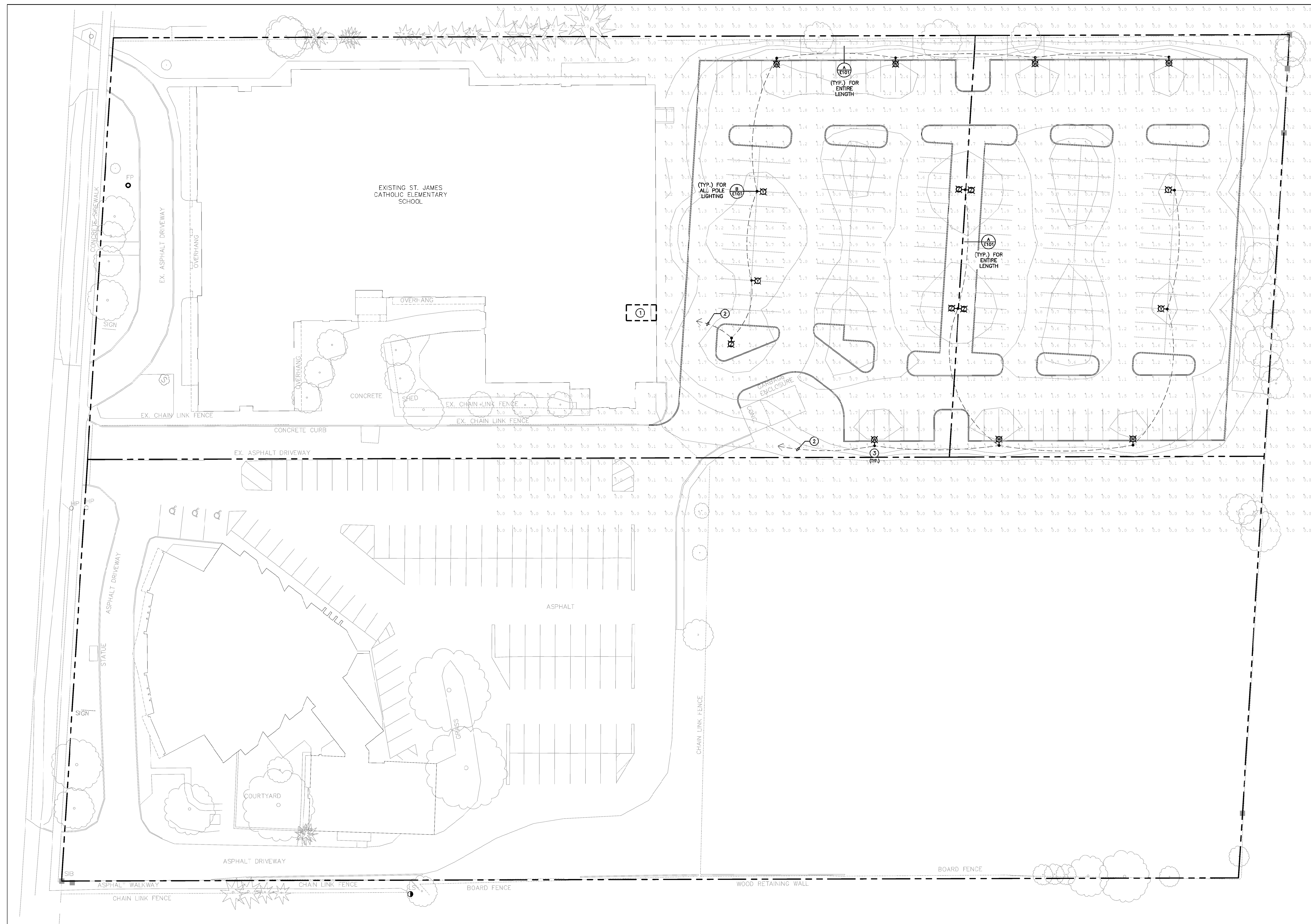
Date: **JUNE 2019** Issued: **AUG. 2019**  
Job No.: **S4 1630** Drawn By:  
Scale: **1:300** Checked By:  
SHEET No.: **SP.1** File No.: **1630SP-190808.DWG**

**SITE STATISTICS**

	REQUIRED	PROVIDED
A. ZONING: CU PROPOSED USE - ADULT ED (SCHOOL, PUBLIC)	N/A	1.19 Ha
B. LOT AREA	4,345.0 sq m (EXISTING)	4,345.0 sq m (EX)
C. G.F.A.	N/A	110.80 m (EX)
D. MINIMUM LOT FRONTAGE	6.0 m	15.65 m (EX)
E. MINIMUM FRONT YARD	6.0 m	N/A
F. MINIMUM FLANKAGE YARD	4.5 m	5.80 m
G.i. MINIMUM REQUIRED INTERIOR SIDE YARD (N)	4.5 m	8.70 m
G.ii. MINIMUM REQUIRED INTERIOR SIDE YARD (S)	7.5 m	110.78 m
H. MINIMUM REAR YARD	EXISTING HEIGHT = 8.4 m	8.4m
L. MAXIMUM BUILDING HEIGHT		

	REQUIRED	PROVIDED
M. PARKING	4.0 SPACES / CLASSROOM 20 EXISTING CORE CLASSROOMS 27 PROPOSED CLASSROOMS 4.0 x 29 = 116 SPACES REQ'D	187 PROVIDED ON SCHOOL PROPERTY 55 PROVIDED ON CHURCH PROPERTY = 241 TOTAL
ACCESSIBLE PARKING	FUNCTIONAL REQUIREMENT 8.3 SPACES PER CLASSROOM (PEAK PARKING DEMAND)* = 8.3 x 29 = 241 spaces	68 SPACES TOTAL PARKING ON CHURCH PROPERTY
BICYCLE PARKING	201 - 1000 REQUIRES 2 + 2% OF TOTAL PROVIDED = 6 SPACES REQUIRED	7 PROVIDED
	0.5 PER CLASSROOM 27 x 0.5 = 14 SPACES REQUIRED	14 PROVIDED

\* REFERENCE PARKING STUDY SUBMITTED WITH APPLICATION



ELECTRICAL SYMBOLS		NOTE: ALL SYMBOLS MAY NOT BE USED	
<b>LIGHTING</b>	<b>POWER</b>		
[Symbol]	LIGHT FIXTURE TYPE AS INDICATED	[Symbol]	WALL MOUNTED RECEPTACLE (15A-120V)
[Symbol]	LIGHT FIXTURE (HATCHING DENOTES NIGHTLIGHT)	[Symbol]	JUNCTION BOX
[Symbol]	COMBINATION EMERGENCY/EXIT TYPE AS INDICATED	[Symbol]	PANEL AS INDICATED
[Symbol]	CEILING OR WALL MOUNTED LIGHT FIXTURE TYPE AS INDICATED	[Symbol]	CLOCK AS PER SPECIFICATION
[Symbol]	POLE MOUNTED LIGHT FIXTURE	[Symbol]	SPEED CONTROLLER
[Symbol]	WALL MOUNTED EXIT LIGHT SHADING INDICATES FACE	[Symbol]	DESTRATIFICATION FAN
[Symbol]	TWIN EMERGENCY LIGHTING FIXTURE	<b>COMMUNICATIONS</b>	
[Symbol]	BATTERY UNIT WITH INTEGRAL EMERGENCY FIXTURE (EM-X INDICATES DC CIRCUIT, AND X-X INDICATES AC SOURCE CIRCUIT)	[Symbol]	SINGLE WALL MOUNTED TELEPHONE OUTLET UNLESS OTHERWISE NOTED C/W 1" (27mm) C TO HANGER SYSTEM IN NEAREST CORRIDOR CEILING SPACE.
[Symbol]	SINGLE POLE SWITCH (3-3 WAY, 4-4 WAY, P=PLUG LIGHT, K=KEYED, M=MANUAL, M=MOTOR RATED)	[Symbol]	SINGLE COMPUTER OUTLET UNLESS OTHERWISE NOTED C/W 1" (27mm) C TO HANGER SYSTEM IN NEAREST CORRIDOR CEILING SPACE.
[Symbol]	DIGITAL CEILING MOUNTED MOTION SENSOR	[Symbol]	COMBINATION SINGLE VOICE / SINGLE COMPUTER OUTLET UNLESS OTHERWISE NOTED C/W 1" (27mm) C TO HANGER SYSTEM IN NEAREST CORRIDOR CEILING SPACE.
[Symbol]	DIGITAL WALL MOUNTED MOTION SENSOR	[Symbol]	P.A. CALL SWITCH
[Symbol]	DIGITAL ROOM CONTROLLER	[Symbol]	WALL MOUNTED SPEAKER (CS=COLUMN SPEAKER)
[Symbol]	DIGITAL WALL STATION, "X" DENOTES NUMBER OF CONTROL BUTTONS IN SINGLE GANG	<b>GENERAL</b>	
[Symbol]	FIRE ALARM	[Symbol]	ALARM HORN (A, B = SIGNAL CIRCUIT)
<b>GENERAL</b>			
[Symbol]	INDICATED EXISTING ITEM TO REMAIN		
[Symbol]	INDICATES EXISTING ITEM TO BE DELETED		
[Symbol]	INDICATES EXISTING ITEM TO BE RELOCATED/N RELOCATED POSITION		
[Symbol]	NOTE INDICATOR		

**SPECIFIC NOTES**

- INDICATES APPROXIMATE LOCATION OF EXISTING STORAGE ROOM CONTAINING EXISTING EXTERIOR LIGHTING CONTROLS.
- NEW LIGHTING DUCTS ARE TO RUN BACK TO ELECTRICAL ROOM. CONNECT TO EXISTING EXTERIOR LIGHTING CONTROLS. PROVIDE TWO (2) 15A-1P BREAKERS WITHIN A NEARBY 347/600V PANEL. PROVIDE UPDATED TYPED/WRITTEN DOCUMENT TO SUIT ARCHITECT.
- INDICATES PARKING LOT FIXTURE MOUNTED ON CONCRETE POLE BASE AND SET BACK MIN. 1000mm FROM CURB OR SIDEWALK (WHERE APPLICABLE).

NUMERIC SUMMARY (OUTDOOR PARKING/DRIVE AREA LIGHTING)						
LABEL	CALC TYPE	UNITS	AVG.	MAX.	AVG./MIN.	MAX./MIN.
PARKING ILLUMINANCE	FC	1.46	3.2	0.5	2.92	6.4

ALL LIGHTING DEVICES SHALL BE FULL CUT OFF AND NIGHT SKY FRIENDLY, AND SHALL BE MITIGATED AT THE SOURCE SO THAT NO LIGHT WILL BE DIRECTLY PROJECTED ONTO ADJACENT PROPERTIES.

Halton Catholic District School Board  
**HALTON CATHOLIC DISTRICT SCHOOL BOARD**  
 802 Drury Lane  
 Burlington, Ontario

**THOMAS MERTON CENTRE**  
 255 Morden Road  
 Oakville, Ontario

Architect:  
**sn/yder**  
 Snyder Architects Inc.  
 201 King St. East, Toronto, ON M5X 1C7  
 Tel: 416.969.2444 Fax: 416.969.4443  
 www.snyderarchitects.com

Consultants:  
**DEI**  
 Consulting Engineers Ltd.  
 Mechanical, Electrical, Aquatic  
 14 Northfield Road, Waterloo, ON N2L 2Y2  
 Phone: 519-745-1555 Fax: 519-745-1555  
 www.deiconsultants.com  
 Project Number: 16878

**McGraw-Edison**

**GALEON LED**

**1-10 Light Square Solid State LED AREA ILLUMINANCE**

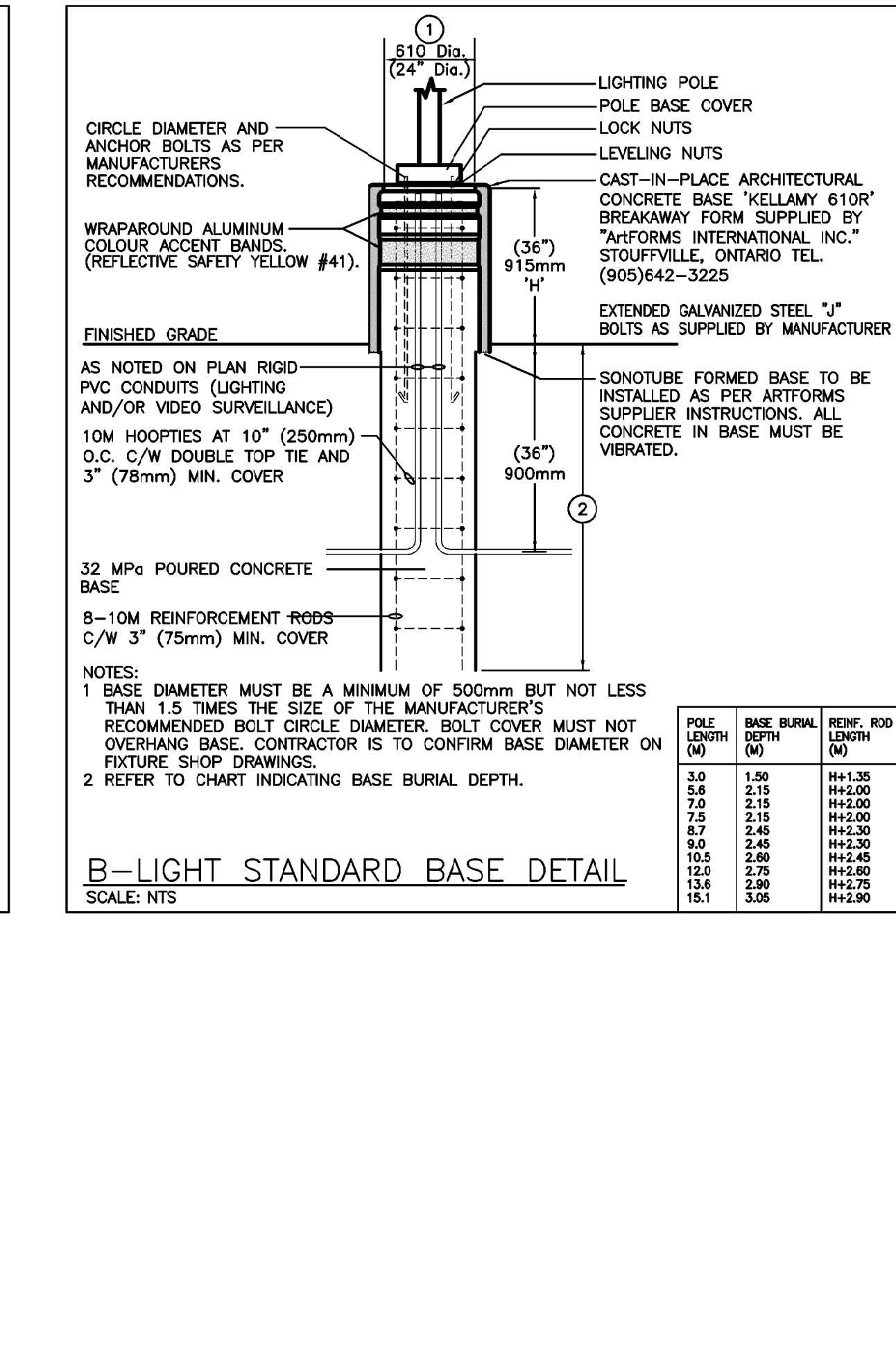
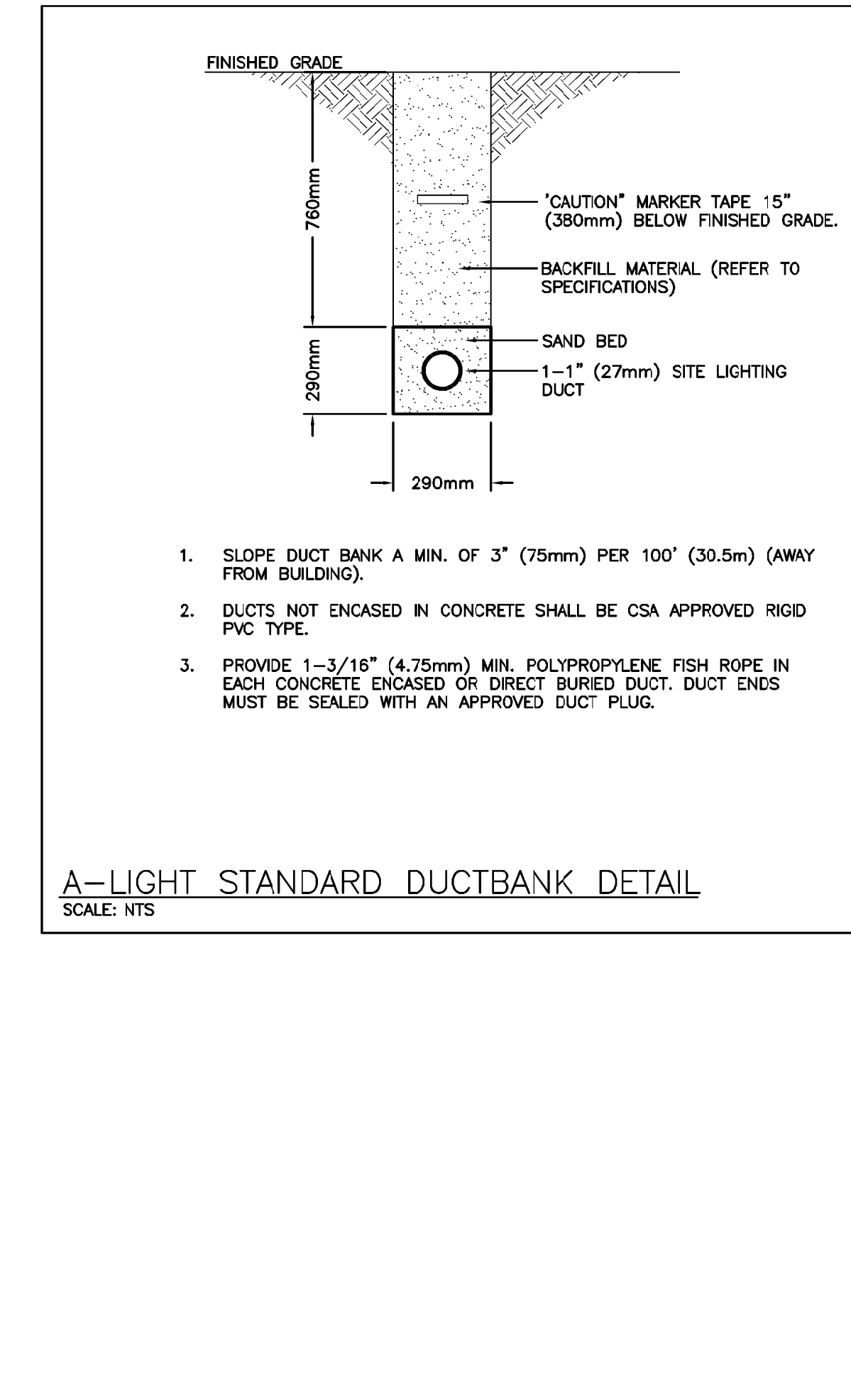
**DESCRIPTION**  
 The Galeon™ LED luminaire delivers exceptional performance in a highly scalable, low-profile design. Advanced high-efficiency AccuLED Optics™ system provides uniform and energy-efficient illumination for walkways, parking lots, roadways, building areas and security lighting applications. IP66 rated and UL/CUL Listed for wet locations.

**OPERATING FEATURES**  
**Construction**  
 Enclosed aluminum housing enclosure thermally isolated from light source for optimal thermal performance. Heavy-wall, die-cast aluminum end caps enclose housing and die-cast aluminum heat sink provides excellent heat dissipation. Advanced lighting technology provides uniform lighting and excellent beam spread. The Galeon LED luminaire is designed for operation in 0°C to 40°C ambient environments. For applications with ambient temperatures exceeding 40°C, specific beam angle and mounting height recommendations are provided. For applications with ambient temperatures exceeding 40°C, specific beam angle and mounting height recommendations are provided.

**Optics**  
 Patented high-efficiency AccuLED Optics technology. Optics are precisely designed to shape and distribute light to maximize efficiency and application spacing. AccuLED Optics create consistent beam angles and distribution to meet customer application requirements. Offered standard in 4000K or 2700K CCT TO CRI. Output: 3000K, 3000K and 6000K CCT.

**Dimensions**  
 11.5" (292mm) x 11.5" (292mm) x 2.5" (63.5mm) H

**CERTIFICATION DATA**  
 3000K, 3000K and 6000K CCT  
 4000K, 5000K and 6000K CCT



**PROFESSIONAL ENGINEER**  
 JASON J. JACOBSON  
 7/21/19  
 PROVINCE OF ONTARIO

Stamp:

Project North	True North
No. 1	Revisions
1	ISSUED TO OWNER
2	ISSUED FOR SITE PLAN APPROVAL

No.	Issue	Date

The contractor shall verify all dimensions and report all errors and discrepancies to the Consultant before commencement of the work. Payment of services. Failure to comply in either building construction will permit. Obtain approval for completion of services from Consultant before commencement of the work. The contractor shall be responsible for all off-site fitting and installation of the work. The contractor shall be responsible for all off-site fitting and installation of the work. The contractor shall be responsible for all off-site fitting and installation of the work. The contractor shall be responsible for all off-site fitting and installation of the work.

Drawing Title:  
**SITE PLAN, LEGEND & SCHEDULES**

Scale: AS NOTED Date: JULY 2019  
 Drawn by: DAS Checked by: JJ  
 Job No. Drawing No.  
**1903 E101**