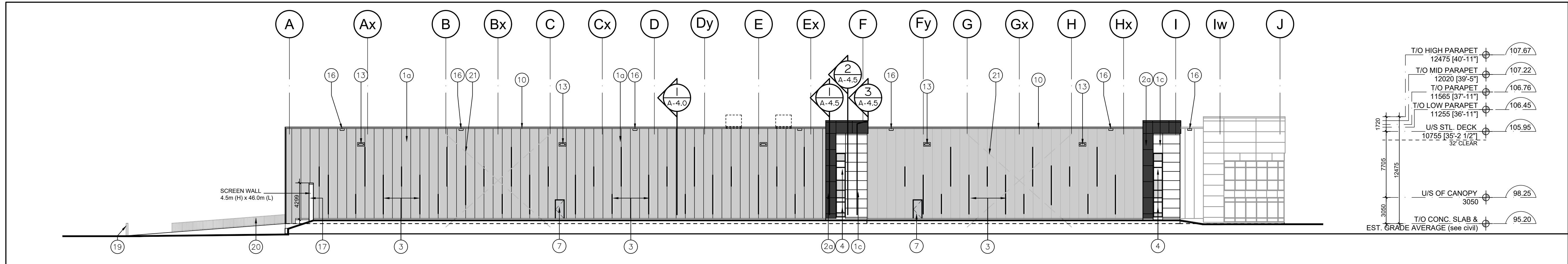
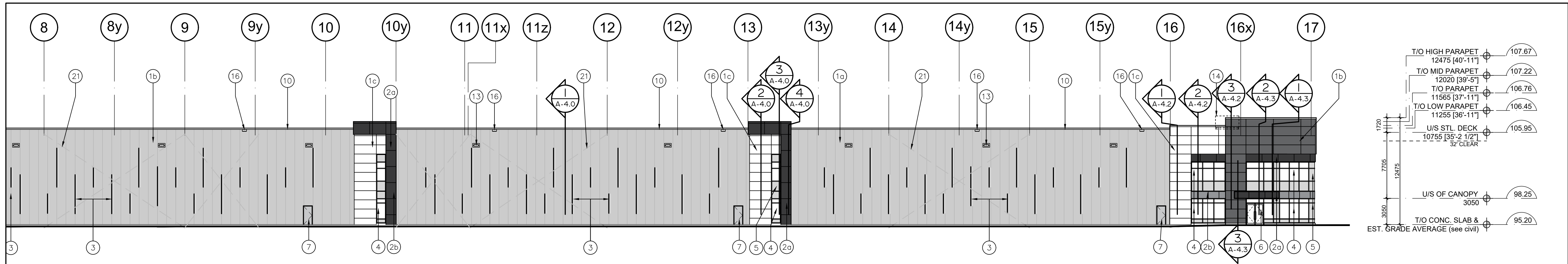


LEGEND

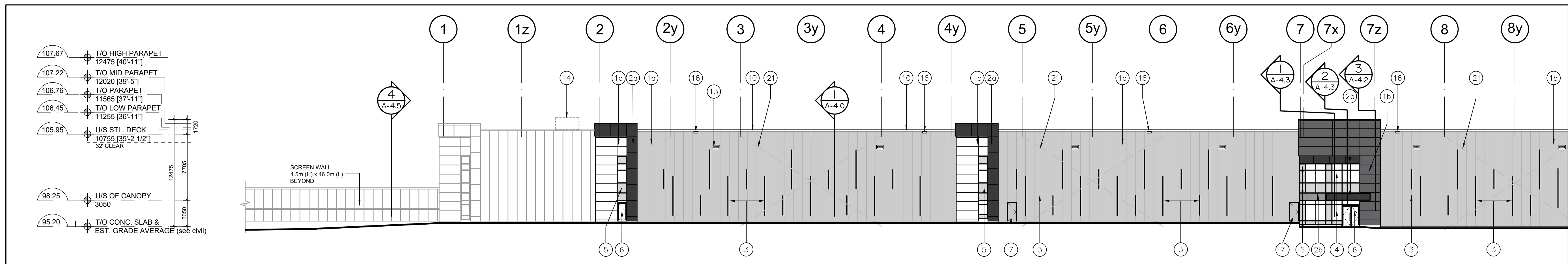
- 10a INSULATED METAL PANELS BY KINGSPAN KS SERIES WITH SHADOWLINE FINISH OR APPROVED EQUAL. COLOUR: LIGHT GREY. SAMPLE TO BE SUBMITTED FOR ARCHITECT'S APPROVAL.
- 10b INSULATED METAL PANELS BY KINGSPAN KS SERIES WITH SHADOWLINE FINISH OR APPROVED EQUAL. COLOUR: DARK GREY. SAMPLE TO BE SUBMITTED FOR ARCHITECT'S APPROVAL.
- 10c INSULATED METAL PANELS BY KINGSPAN KS SERIES WITH SHADOWLINE FINISH OR APPROVED EQUAL. COLOUR: WHITE. SAMPLE TO BE SUBMITTED FOR ARCHITECT'S APPROVAL.
- 20a PREFINISHED COMPOSITE ALUMINUM PANELS COLOUR: CHARCOAL
- 20b PREFINISHED COMPOSITE ALUMINUM PANELS COLOUR: LIGHT GREY
- 3 PREFINISHED METAL "FIN" (TWO LENGTHS -> 2250 or 4540mm). COLOUR: CHARCOAL GREY TO MATCH METAL PANELS.
- 4 WINDOW - THERMAL DOUBLE GLAZING (GREY TINT) IN PREFINISHED ALUMINUM CURTAIN WALL FRAMES. COLOUR OF CURTAIN WALL CAPS: BLACK ANODIZED ALUMINUM, C/W BIRD-FRIENDLY VISUAL MARKERS
- 5 SPANDREL GLAZING IN PREFINISHED ALUMINUM CURTAIN WALL FRAMES. COLOUR OF SPANDREL: OPACI-COAT # 3-3747 COSMIC GREY; COLOUR OF CURTAIN WALL CAPS: BLACK ANODIZED ALUMINUM
- 6 CLEAR TEMPERED THERMAL GLASS AND ALUMINUM DOOR(S). COLOUR OF ALUMINUM TO MATCH CURTAIN WALL CAPS.
- 7 MAN DOOR - INSULATED HOLLOW METAL DOOR PAINT COLOUR: TO MATCH ADJACENT METAL PANEL
- 8 INSULATED HOLLOW METAL OVERHEAD DOOR C/W TEMPERED GLASS VIEW WINDOW. COLOUR TO BE GREY TO MATCH INSULATED METAL PANELS. C/W DOCK SEAL, DOCK LEVELLER AND DOCK BUMPERS.
- 9 INSULATED HOLLOW METAL OVERHEAD DOOR C/W TEMPERED GLASS VIEW WINDOW. COLOUR TO BE GREY TO MATCH INSULATED METAL PANELS.
- 10 PREFINISHED METAL CAP FLASHING. COLOUR TO MATCH METAL PANELS BELOW.
- 11 STEEL GRATE EXTERIOR STAIR, PRIMED & MARINE OIL BASE PAINTED GREY.
- 12 TINTED THERMAL GLAZING IN ALUMINUM CURTAIN WALL FRAMES. COLOUR OF GLASS AND FRAMES TO MATCH WINDOWS, TAG #4 (GL-1). CAPS TO BE 50.8mm WIDE.
- 13 LIGHTING - WALL PAC. REFER TO ELECTRICAL DWGS.
- 14 ROOF TOP UNITS, TO BE SCREENED FROM PUBLIC VIEW.
- 15 STEEL GRATE EXTERIOR LADDER AND PLATFORM FOR FUEL LINE ACCESS. PRIMED & MARINE OIL BASE PAINTED GREY.
- 16 RAIN WATER RELIEF SCUPPER.
- 17 PRECAST CONCRETE WITH AGGREGATE FINISH. COLOUR TO BE WHITE.
- 18 STORM PROOF LOUVER. REFER TO MECHANICAL DRAWINGS.
- 19 PIPE BOLLARD, TYPE 'A' AS PER NOTE MS-25 ON SHEET A-0.0.
- 20 GALVANIZED GUARD SYSTEM. T/O GUARD SYSTEM @ 1070mm ABOVE TOP OF RETAINING WALL.
- 21 STRUCTURAL BRACING. REFER TO STRUCT. DWGS.



3 North Elevation
A-3.0 Scale = 1:250



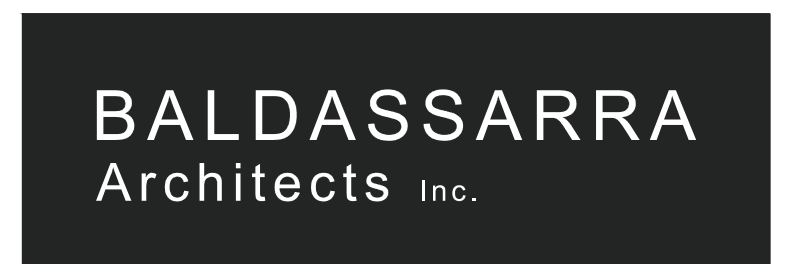
2 Partial West Elevation
A-3.0 Scale = 1:250



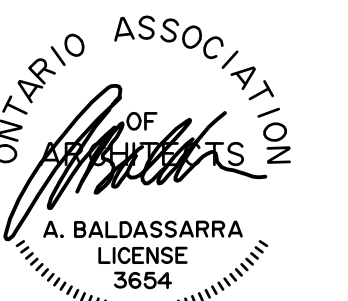
1 Partial West Elevation
A-3.0 Scale = 1:250

No.	ISSUED	DATE
1	ISSUED FOR COORDINATION	MAR. 30, 2021
2	ISSUED FOR SPA	APR. 9, 2021
3	RE-ISSUED FOR SPA	DEC. 15, 2021
4	RE-ISSUED FOR SPA	DEC. 16, 2022
5	ISSUED FOR STEEL AND PRECAST TENDER	FEB. 17, 2023
6	REISSUED FOR STEEL TENDER	SEPT. 18, 2023
7	REISSUED FOR SPA	DEC. 19, 2023

2	REVISED AS NOTED	AUG. 25, 2023
1	REVISED AS NOTED	AUG. 04, 2023



30 Great Gulf Drive, Unit 20 | Concord ON | L4K 0K7
T. 905.660.0722 | www.baldassarra.ca



OWNERS INFORMATION:

FENGATE

772 Winston Churchill Blvd.

Oakville, Ontario

ELEVATIONS
Building B

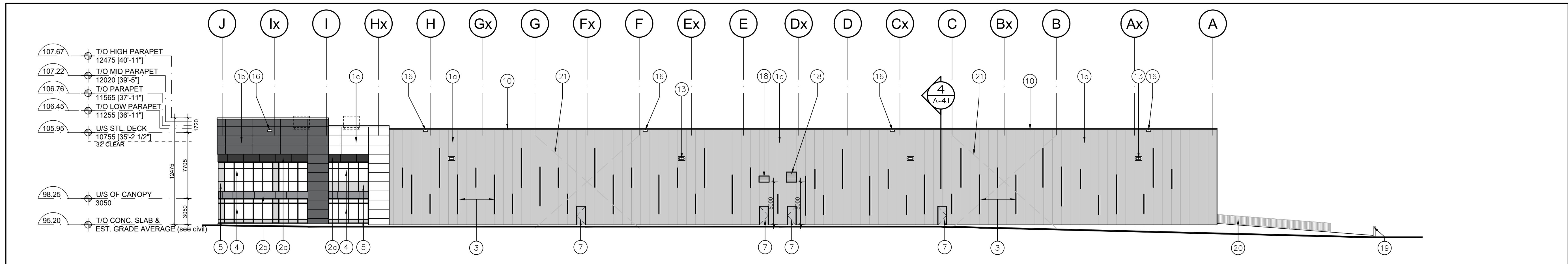
DATE:	DRAWN BY:	CHECKED:	SCALE:
MAR. 2021	HP		AS NOTED

22-77 B

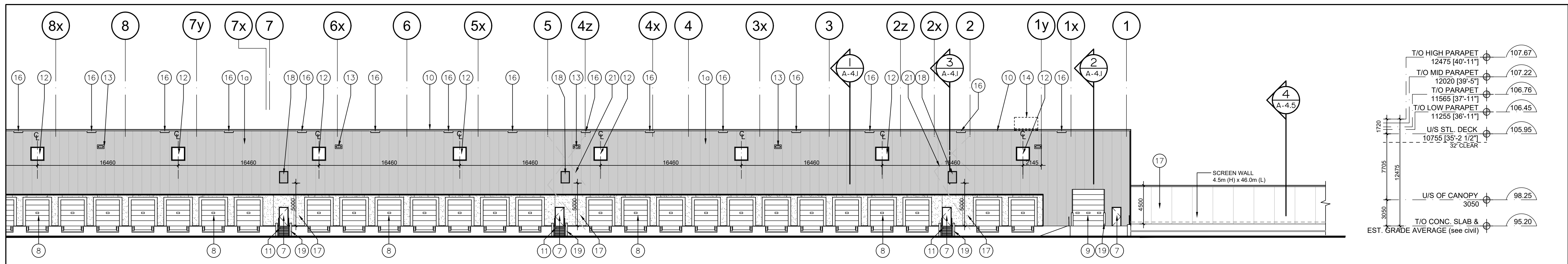
A-3.0

LEGEND

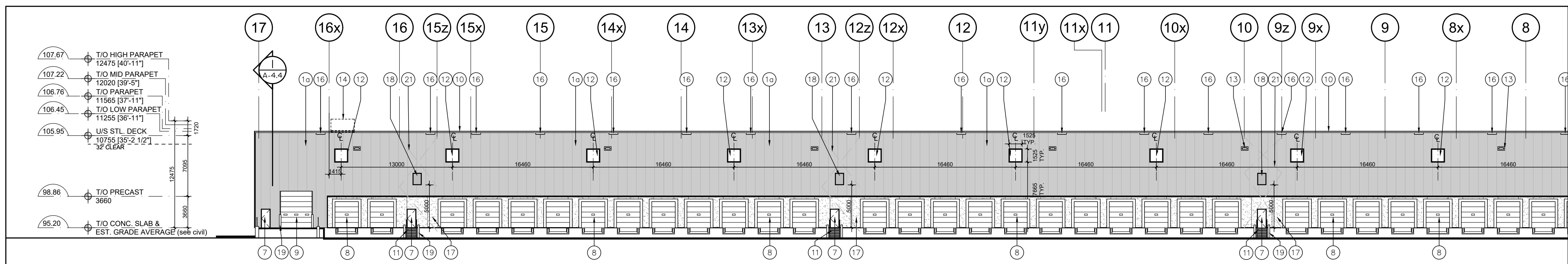
- 1a) INSULATED METAL PANELS BY KINGSPAN KS SERIES WITH SHADOWLINE FINISH OR APPROVED EQUAL. COLOUR: LIGHT GREY. SAMPLE TO BE SUBMITTED FOR ARCHITECT'S APPROVAL.
- 1b) INSULATED METAL PANELS BY KINGSPAN KS SERIES WITH SHADOWLINE FINISH OR APPROVED EQUAL. COLOUR: DARK GREY. SAMPLE TO BE SUBMITTED FOR ARCHITECT'S APPROVAL.
- 1c) INSULATED METAL PANELS BY KINGSPAN KS SERIES WITH SHADOWLINE FINISH OR APPROVED EQUAL. COLOUR: WHITE. SAMPLE TO BE SUBMITTED FOR ARCHITECT'S APPROVAL.
- 2a) PREFINISHED COMPOSITE ALUMINUM PANELS COLOUR: CHARCOAL
- 2b) PREFINISHED COMPOSITE ALUMINUM PANELS COLOUR: LIGHT GREY
- 3) PREFINISHED METAL "FIN" (TWO LENGTHS -> 2250 or 4540mm). COLOUR: CHARCOAL GREY TO MATCH METAL PANELS.
- 4) WINDOW- THERMAL DOUBLE GLAZING (GREY TINT) IN PREFINISHED ALUMINUM CURTAIN WALL FRAMES. COLOUR OF CURTAIN WALL CAPS: BLACK ANODIZED ALUMINUM, C/W BIRD-FRIENDLY VISUAL MARKERS
- 5) SPANDREL GLAZING IN PREFINISHED ALUMINUM CURTAIN WALL FRAMES. COLOUR OF SPANDREL: OPACI-COAT # 3-3747 COSMIC GREY; COLOUR OF CURTAIN WALL CAPS: BLACK ANODIZED ALUMINUM
- 6) CLEAR TEMPERED THERMAL GLASS AND ALUMINUM DOOR(S). COLOUR OF ALUMINUM TO MATCH CURTAIN WALL CAPS.
- 7) MAN DOOR - INSULATED HOLLOW METAL DOOR PAINT COLOUR: TO MATCH ADJACENT METAL PANEL
- 8) INSULATED HOLLOW METAL OVERHEAD DOOR C/W TEMPERED GLASS VIEW WINDOW. COLOUR TO BE GREY TO MATCH INSULATED METAL PANELS. C/W DOCK SEAL, DOCK LEVELLER AND DOCK BUMPERS.
- 9) INSULATED HOLLOW METAL OVERHEAD DOOR C/W TEMPERED GLASS VIEW WINDOW. COLOUR TO BE GREY TO MATCH INSULATED METAL PANELS.
- 10) PREFINISHED METAL CAP FLASHING. COLOUR TO MATCH METAL PANELS BELOW.
- 11) STEEL GRATE EXTERIOR STAIR. PRIMED & MARINE OIL BASE PAINTED GREY.
- 12) TINTED THERMAL GLAZING IN ALUMINUM CURTAIN WALL FRAMES. COLOUR OF GLASS AND FRAMES TO MATCH WINDOWS, TAG #4 (GL-1). CAPS TO BE 50.8mm WIDE.
- 13) LIGHTING - WALL PAC. REFER TO ELECTRICAL DWGS.
- 14) ROOF TOP UNITS, TO BE SCREENED FROM PUBLIC VIEW.
- 15) STEEL GRATE EXTERIOR LADDER AND PLATFORM FOR FUEL LINE ACCESS. PRIMED & MARINE OIL BASE PAINTED GREY.
- 16) RAIN WATER RELIEF SCUPPER.
- 17) PRECAST CONCRETE WITH AGGREGATE FINISH. COLOUR TO BE WHITE.
- 18) STORM PROOF LOUVER. REFER TO MECHANICAL DRAWINGS.
- 19) PIPE BOLLARD, TYPE 'A' AS PER NOTE MS-25 ON SHEET A-0.0.
- 20) GALVANIZED GUARD SYSTEM. T/O GUARD SYSTEM @ 1070mm ABOVE TOP OF RETAINING WALL.
- 21) STRUCTURAL BRACING. REFER TO STRUCT. DWGS.



3) South Elevation
A-3.0 Scale = 1:250



2) Partial East Elevation
A-3.0 Scale = 1:250



1) Partial East Elevation
A-3.0 Scale = 1:250

No.	ISSUED	DATE
1	ISSUED FOR COORDINATION	MAR. 30, 2021
2	ISSUED FOR SPA	APR. 9, 2021
3	RE-ISSUED FOR SPA	DEC. 15, 2021
4	RE-ISSUED FOR SPA	DEC. 16, 2022
5	ISSUED FOR STEEL AND PRECAST TENDER	FEB. 17, 2023
6	REISSUED FOR STEEL TENDER	SEPT. 18, 2023
7	REISSUED FOR SPA	DEC. 19, 2023

2	REVISED AS NOTED	AUG. 25, 2023
1	REVISED AS NOTED	AUG. 04, 2023



30 Great Gulf Drive, Unit 20 | Concord ON | L4K 0K7
T. 905.660.0722 | www.baldassarra.ca



OWNERS INFORMATION:



772 Winston Churchill Blvd.

Oakville, Ontario

ELEVATIONS Building B

DATE:	DRAWN BY:	CHECKED:	SCALE:
MAR. 2021	HP		AS NOTED

PROJECT No. 22-77 B DRAWING No. **A-3.1**

04/23/27 - 772 Winston Churchill - Fengate Architects Inc. - Current Drawings/Model B/23/27 - B - A-3.1.dwg