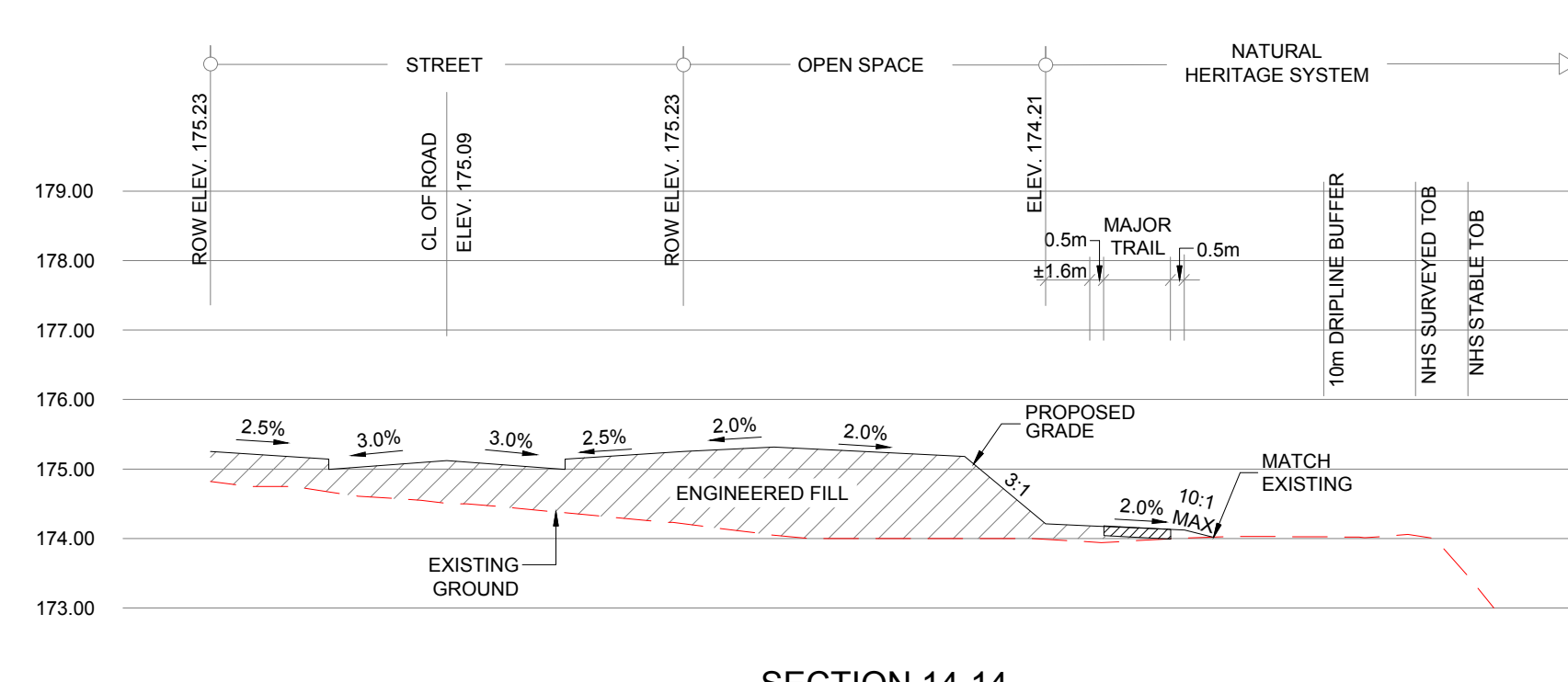
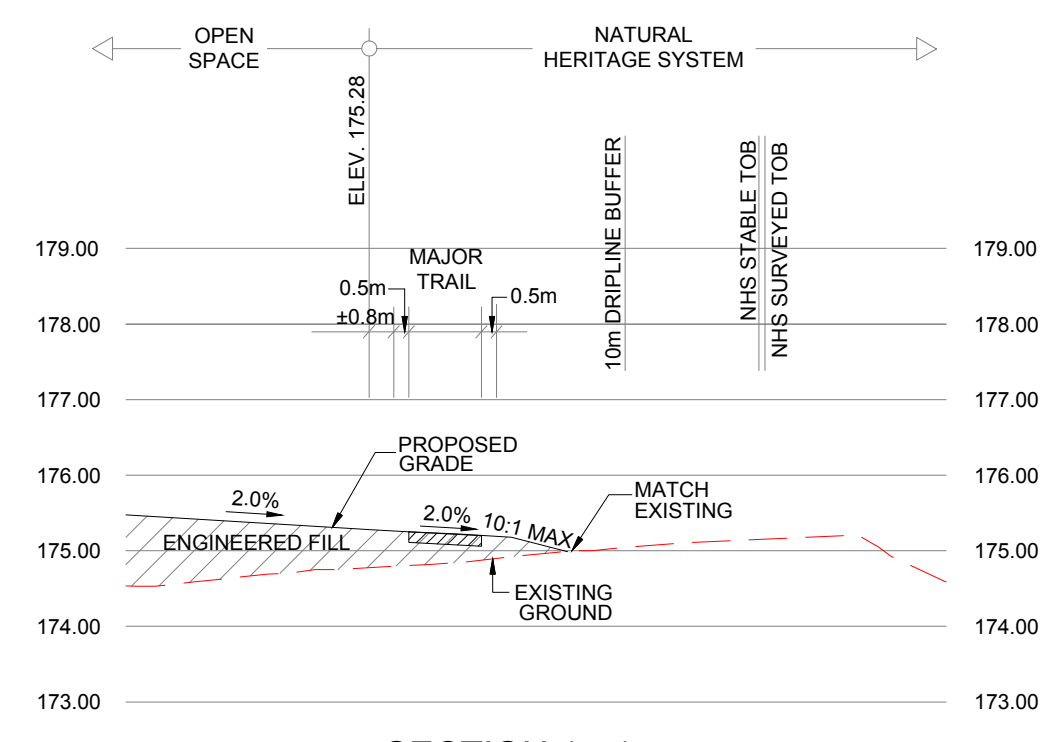


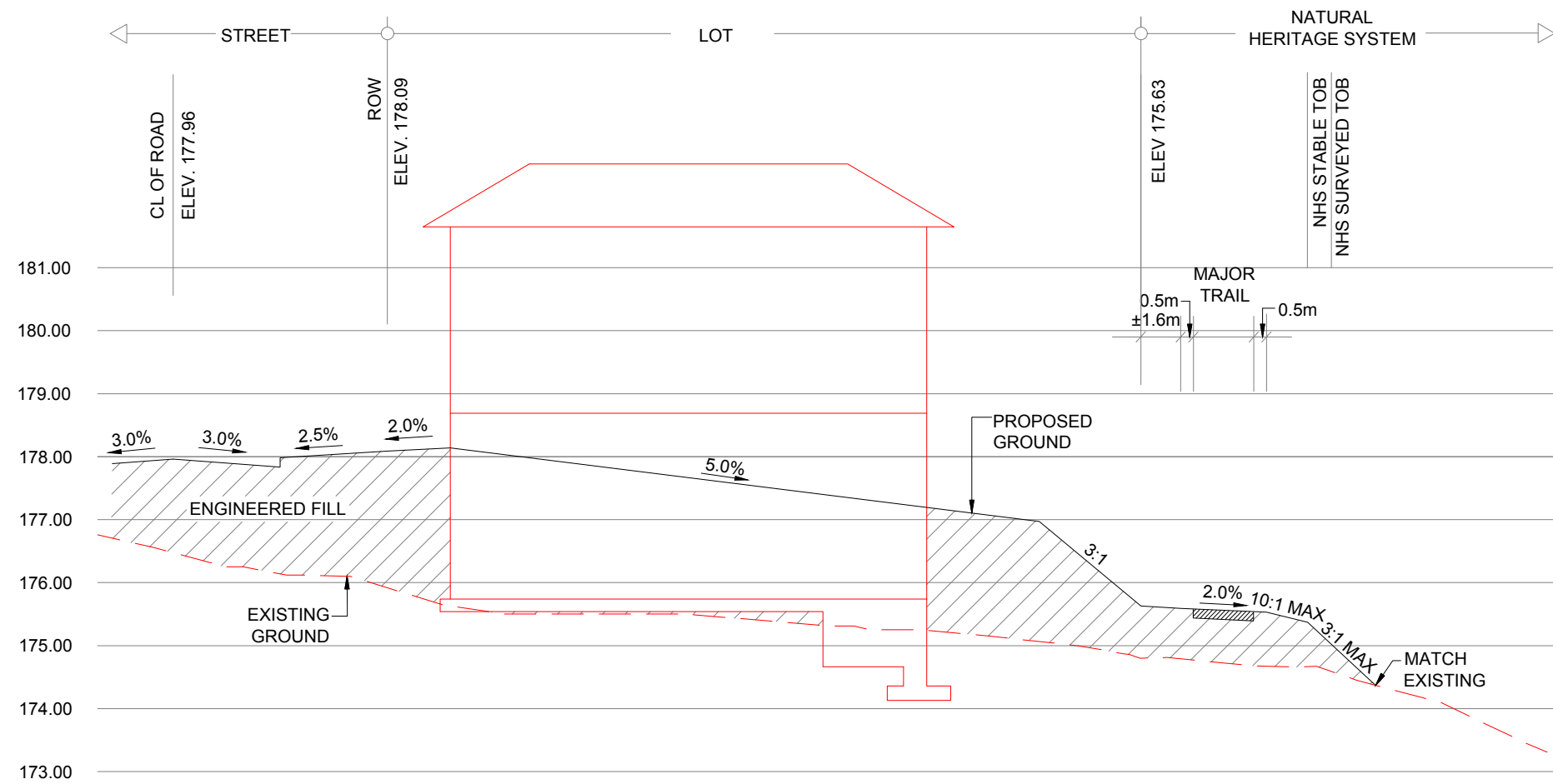
SECTION 13-13
SCALE HOR: 1:250
VER: 1:100



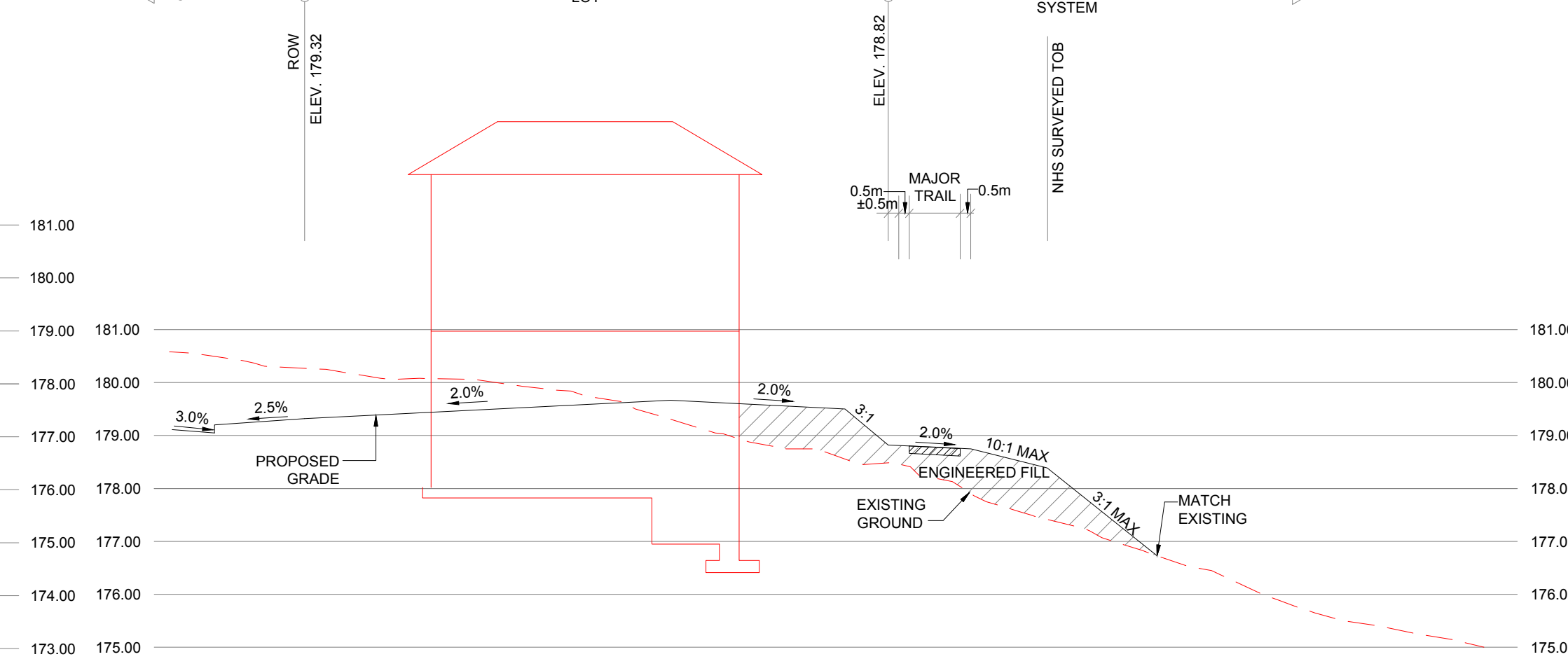
SECTION 14-14
SCALE HOR: 1:250
VER: 1:100



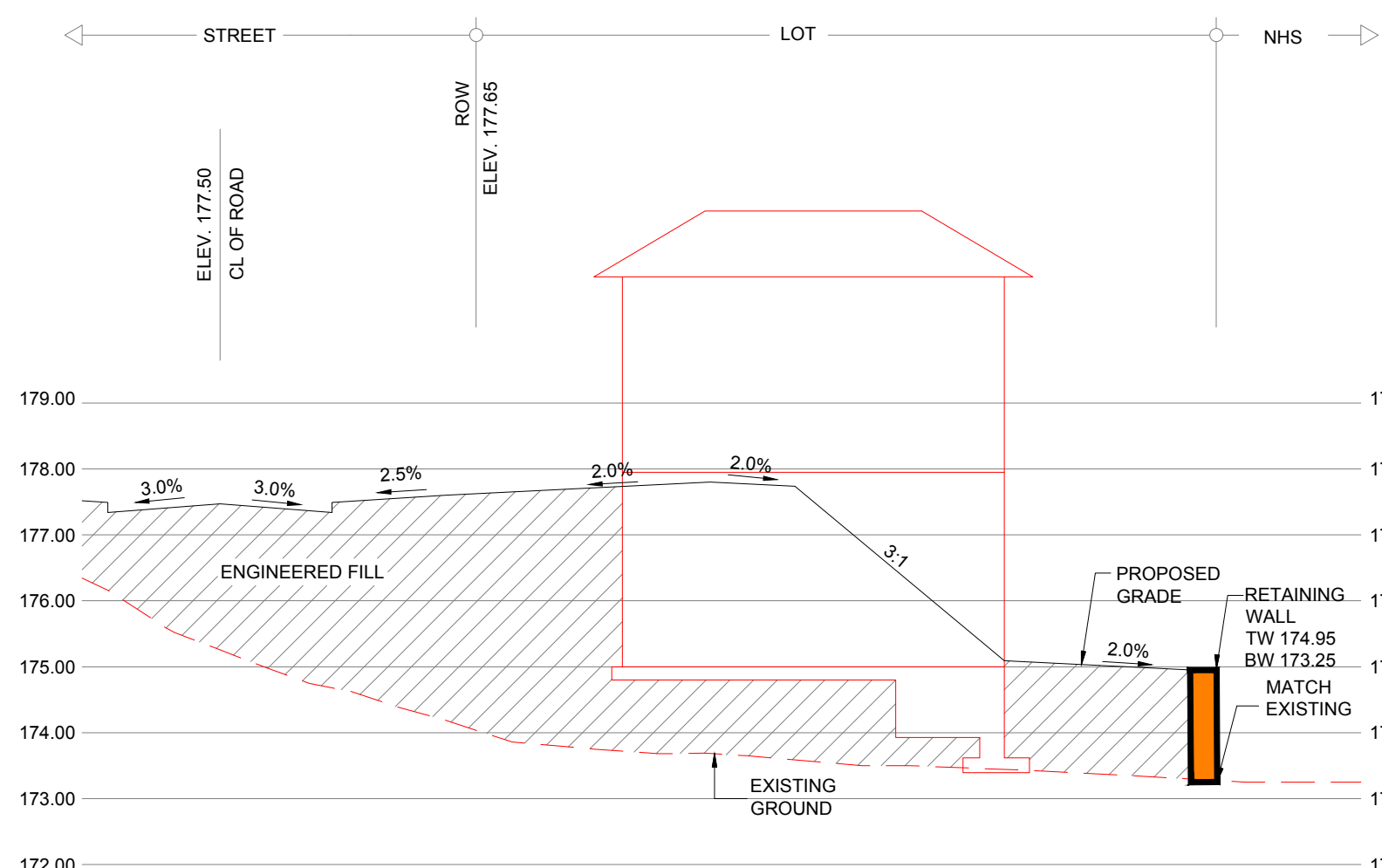
SECTION 15-15
SCALE HOR: 1:250
VER: 1:100



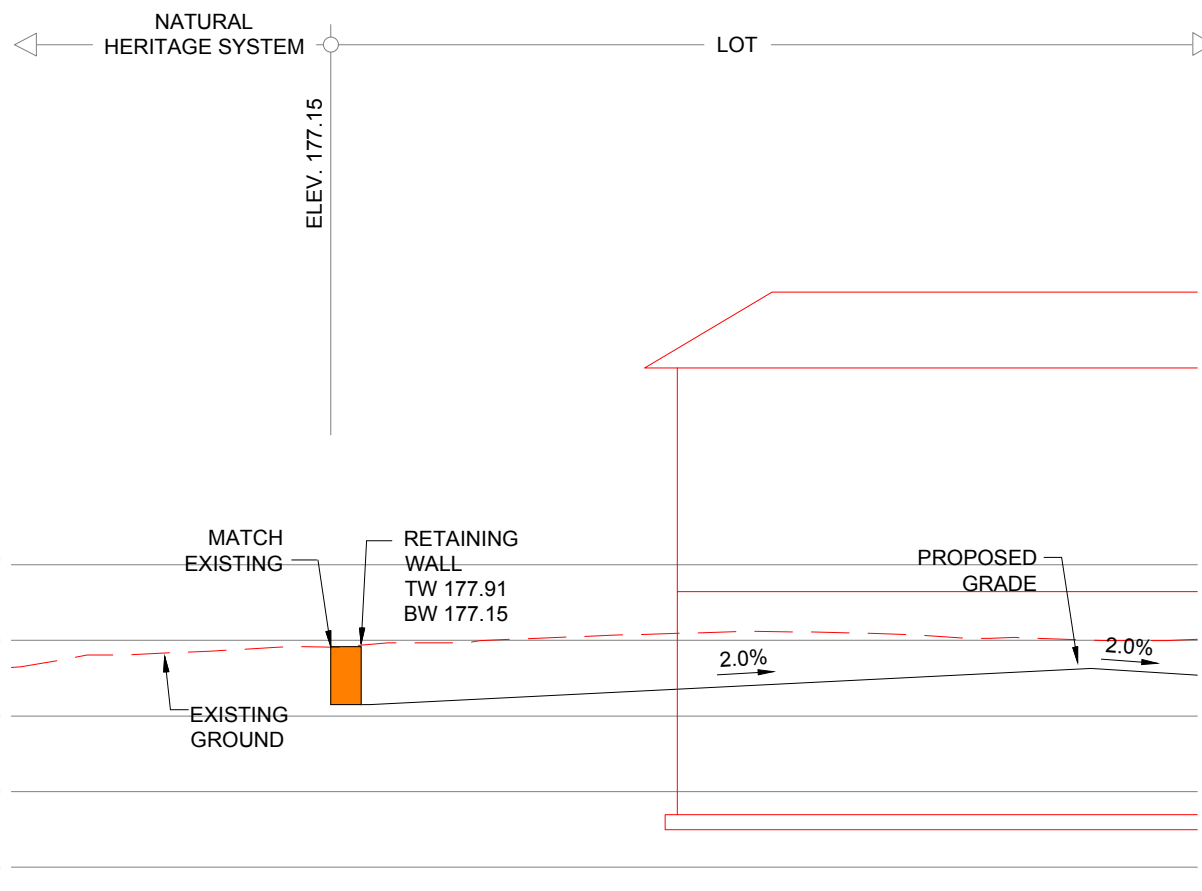
SECTION 16-16
SCALE HOR: 1:250
VER: 1:100



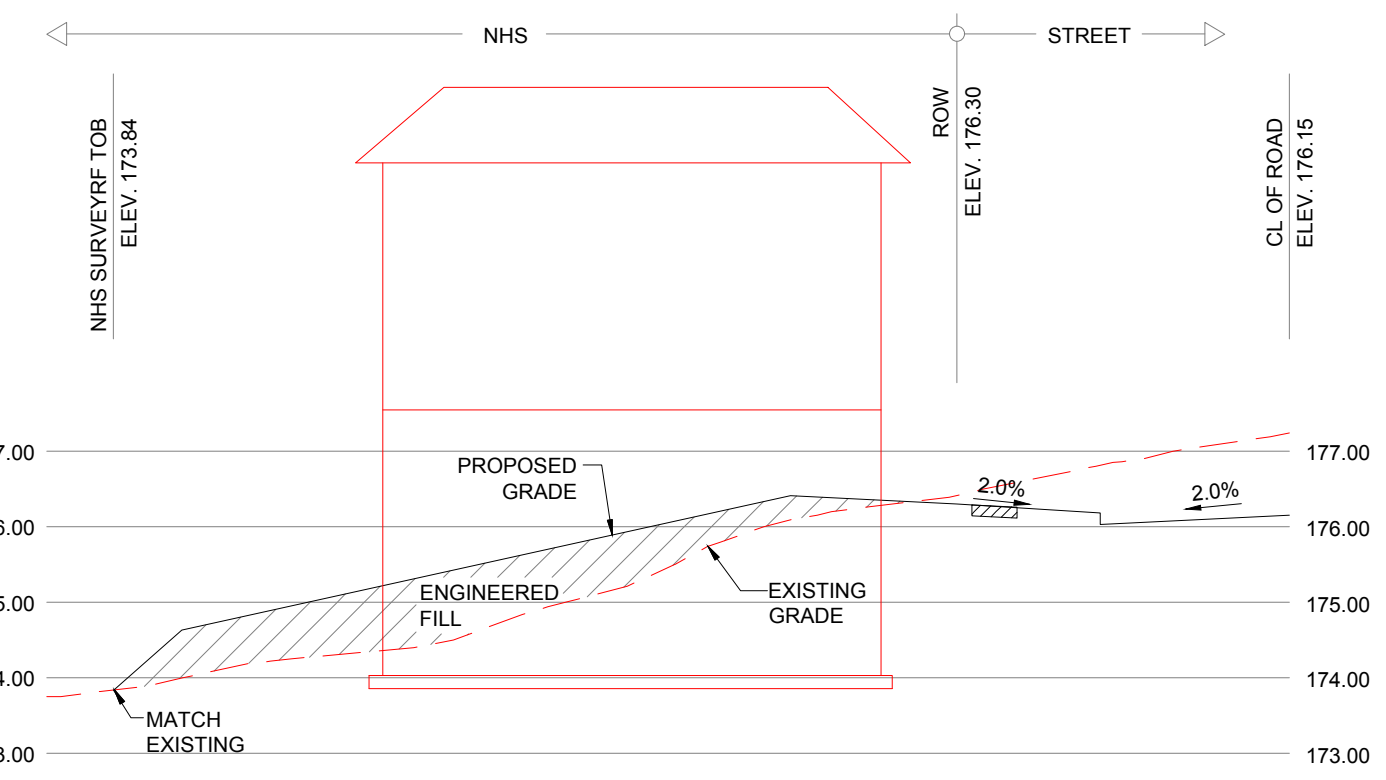
SECTION 17-17
SCALE HOR: 1:250
VER: 1:100



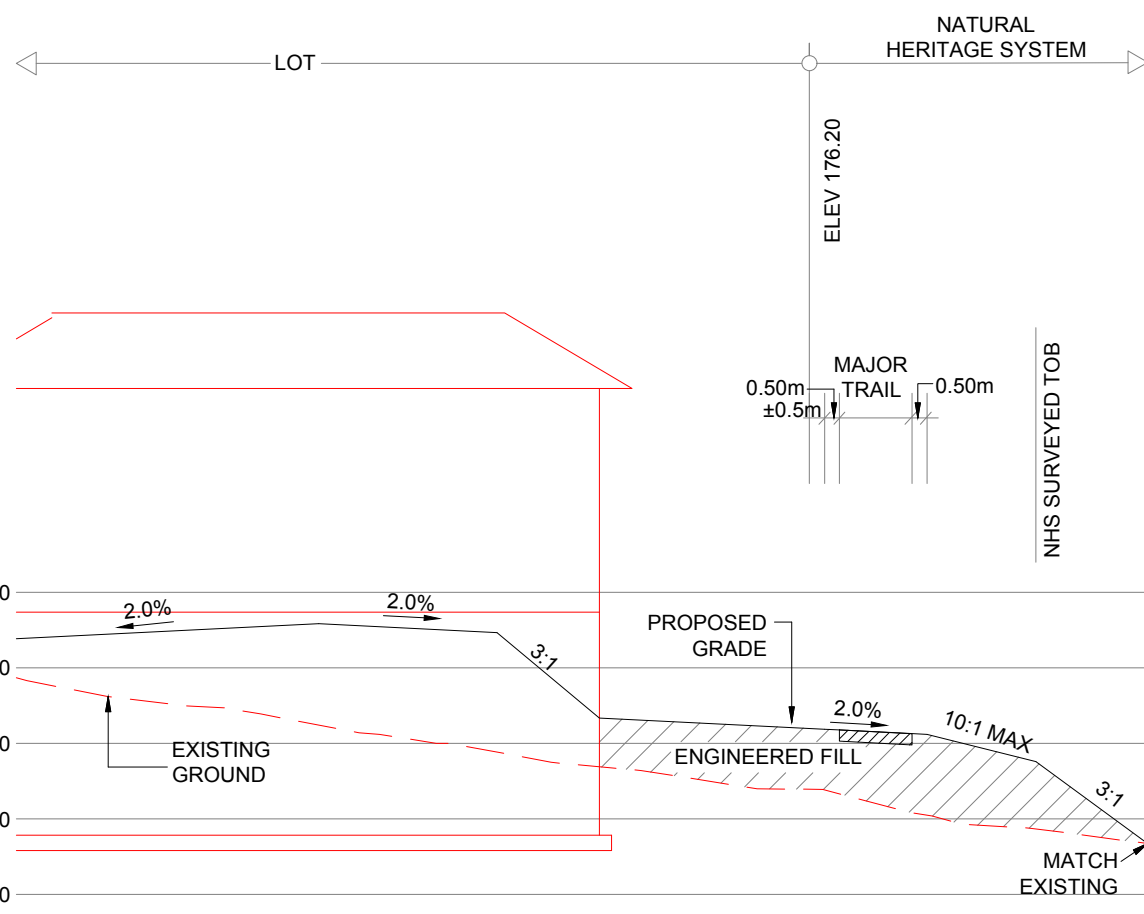
SECTION 18-18
SCALE HOR: 1:250
VER: 1:100



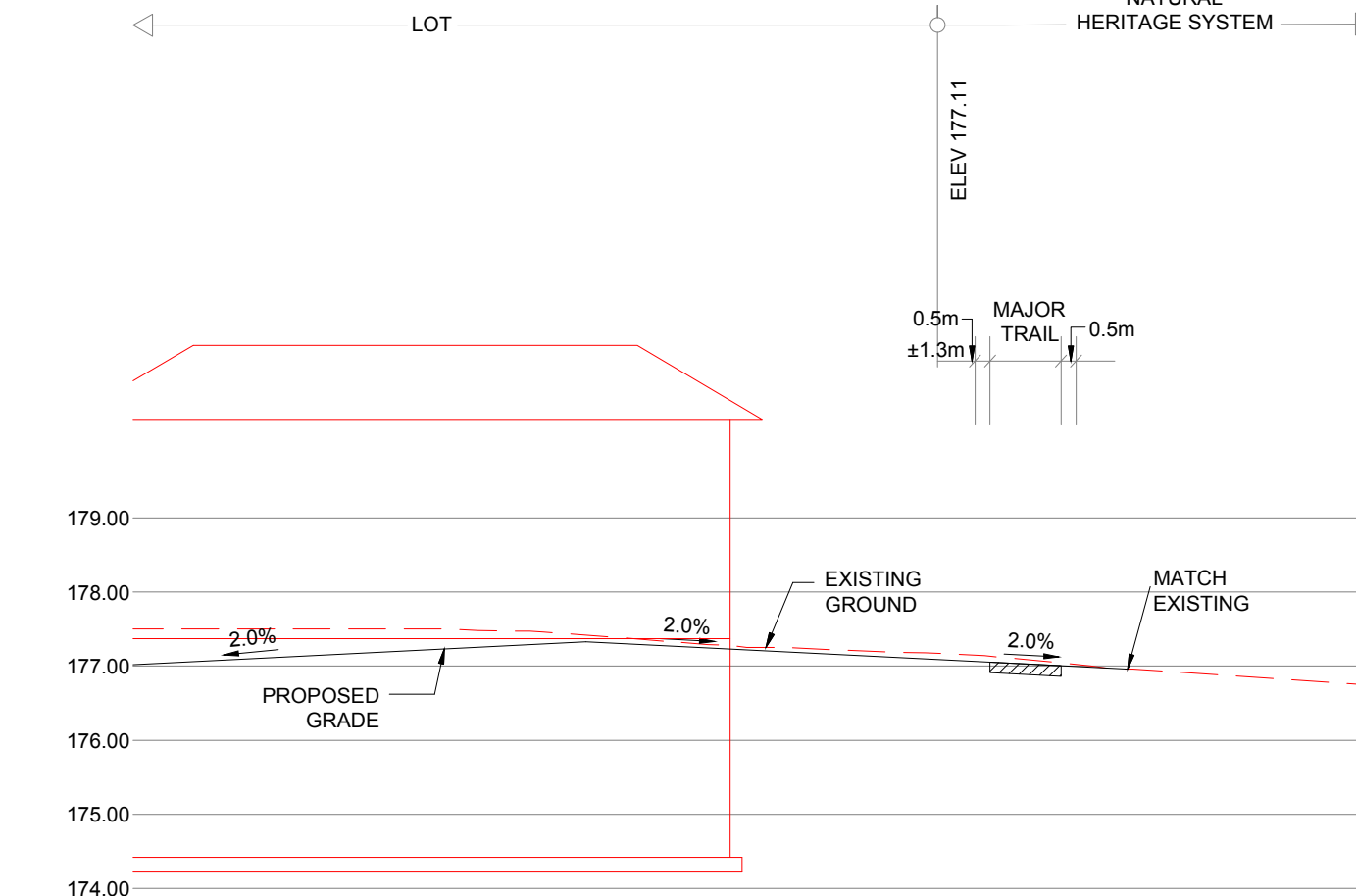
SECTION 19-19
SCALE HOR: 1:250
VER: 1:100



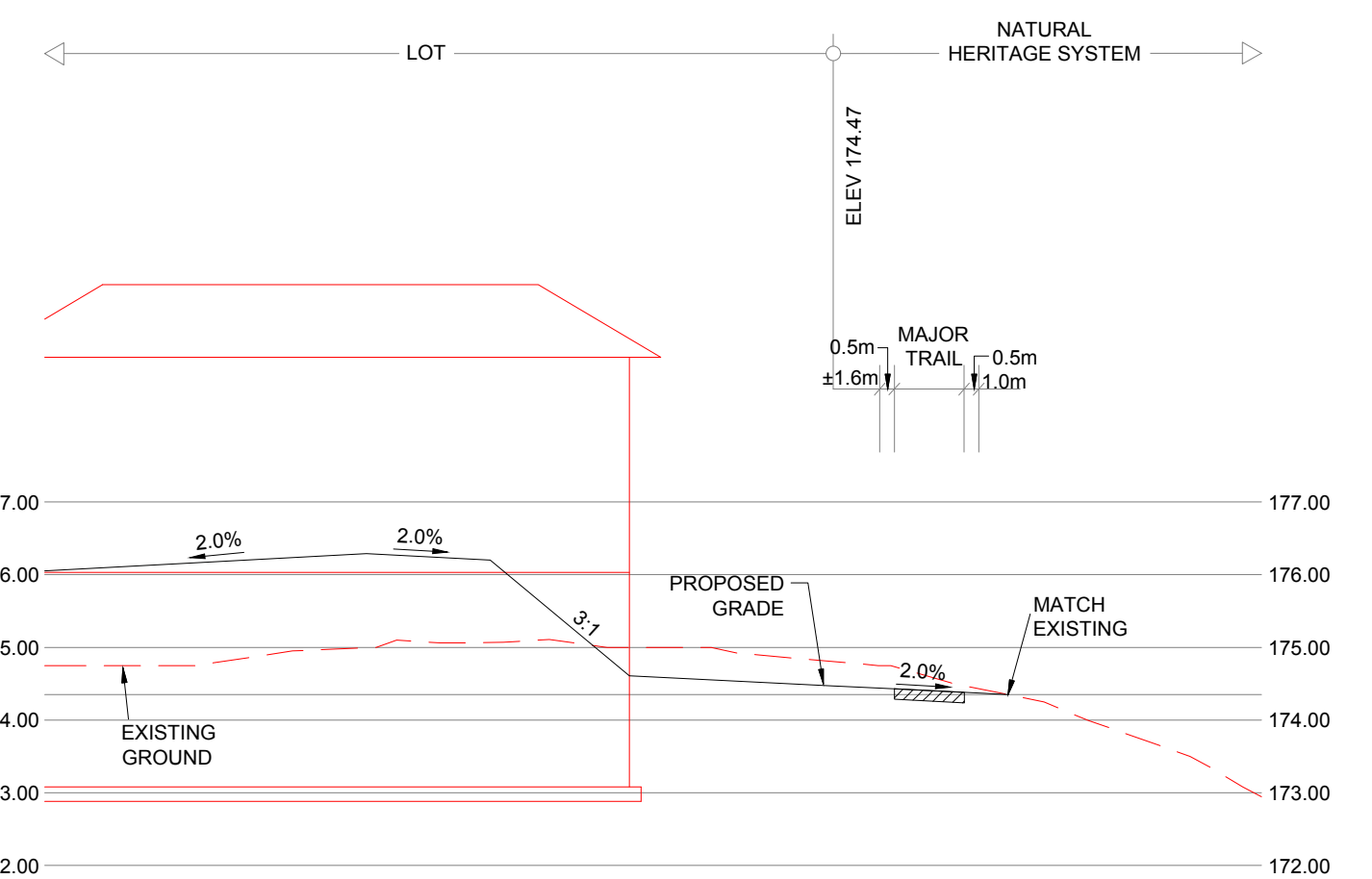
SECTION 34-34
SCALE HOR: 1:250
VER: 1:100



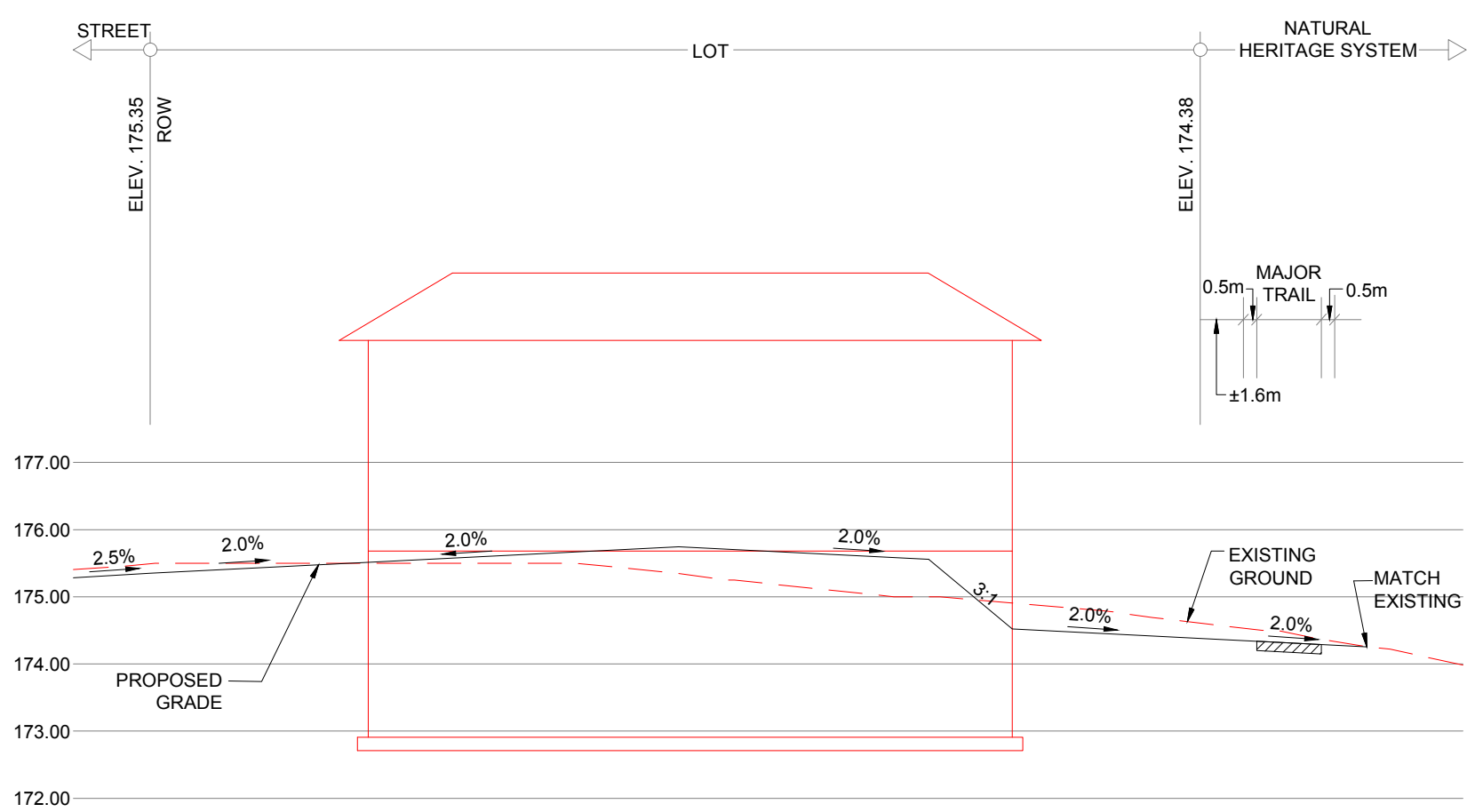
SECTION 20-20
SCALE HOR: 1:250
VER: 1:100



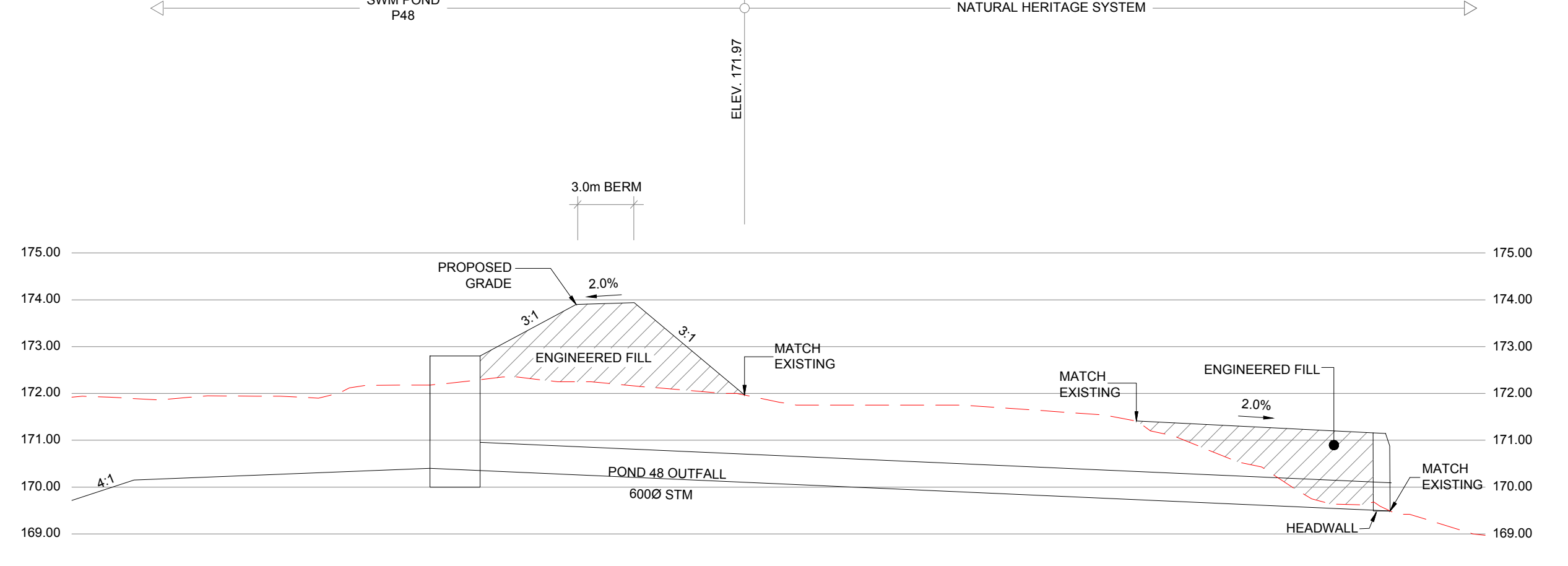
SECTION 21-21
SCALE HOR: 1:250
VER: 1:100



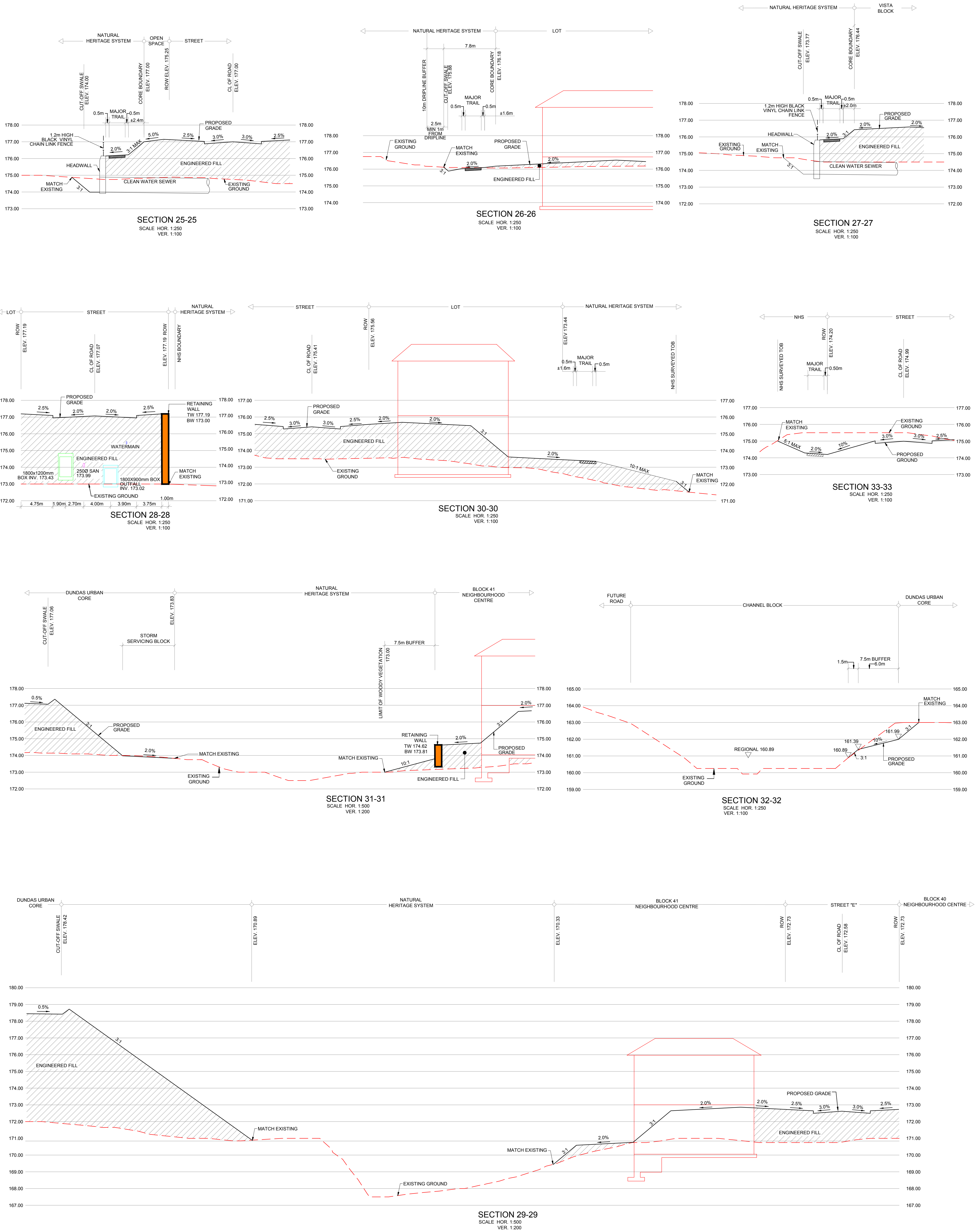
SECTION 22-22
SCALE HOR: 1:250
VER: 1:100

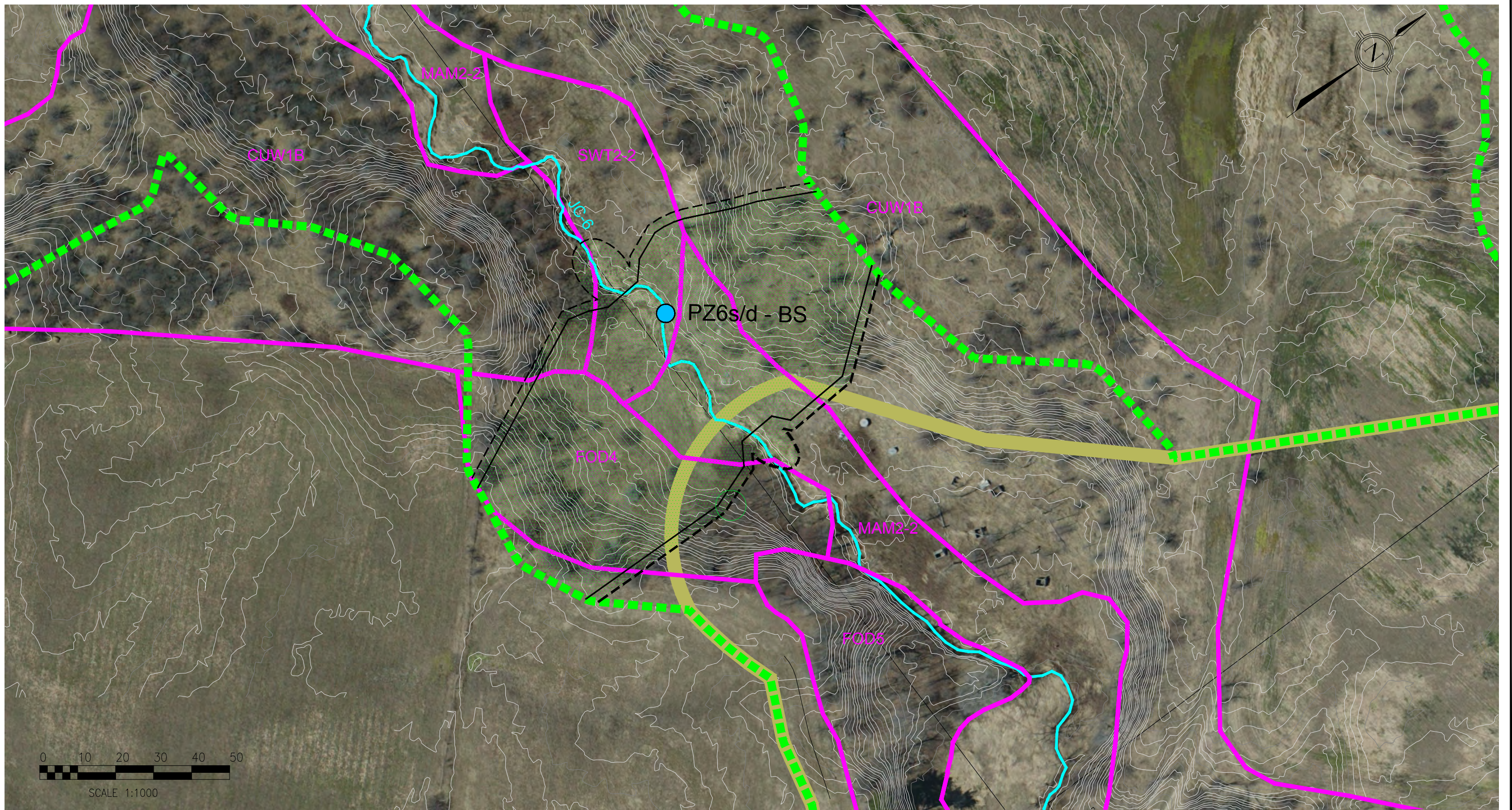


SECTION 23-23
SCALE HOR: 1:250
VER: 1:100



SECTION 24-24
SCALE HOR: 1:250
VER: 1:100





Stonybrook Consulting Inc.
 David Schaeffer Engineering Ltd.
 Bird and Hale Limited
 R.J. Burnside & Associates Limited
 LGL Limited
 GEO Morphix Ltd.
 J.F. Sabourin and Associates Inc.

Legend

- Grading Limit
- Limit of Disturbance
- Core 11 Boundary
- ELC Communities Boundary
- Road Limit of Disturbance

- NHS Boundary
- Creek Centreline
- Piezometre

ELC Communities:

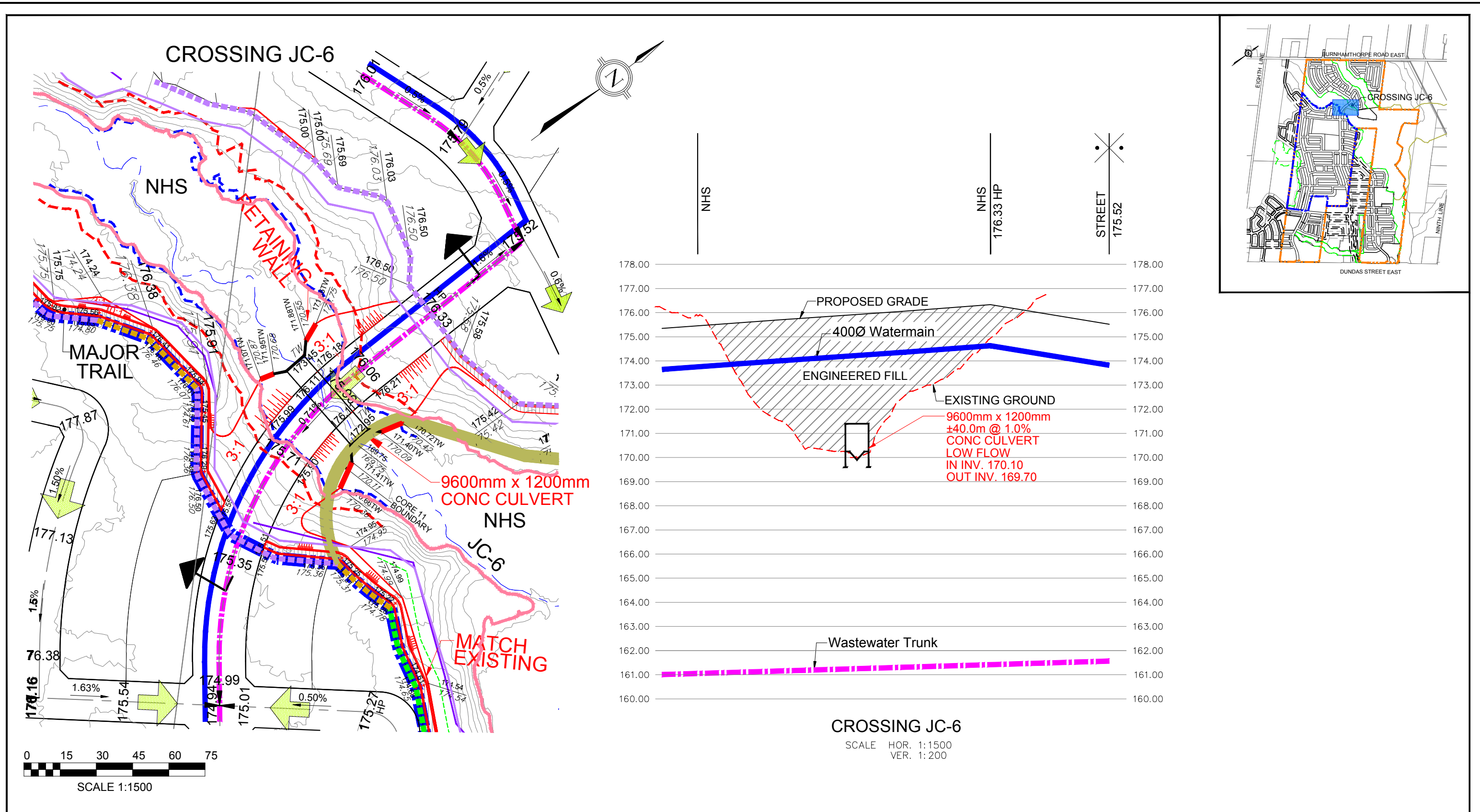
- FOD4 Dry-Fresh Deciduous Forest
- FOD5 Dry-Fresh Sugar Maple Deciduous Forest
- MAM2-2 Reed-canary Mineral Meadow Marsh
- SWT2-2 Willow Mineral Thicket Swamp
- CUW1B Mineral Cultural Woodland

MATTAMY PHASE 3 ADDENDUM TO THE
 JOSHUA'S CREEK TRIBUTARIES EIR/FSS

FIGURE 10.0

**EXISTING CONDITIONS FOR JC-6
 ROAD CROSSING STUDY AREA**

MAY 2020



Stonybrook Consulting Inc.
David Schaeffer Engineering Ltd.
Bird and Hale Limited
R.J. Burnside & Associates Limited
LGL Limited
GEO Morphix Ltd.
J.F. Sabourin and Associates Inc.

- Legend**
- █ Proposed 400Ø Watermain
 - █ Proposed Wastewater Trunk
 - █ NHS Limit
 - █ Existing Regional Floodline Limit
 - - - Proposed Regional Floodline Limit
 - - - 7.5m Proposed Regional Floodline Buffer

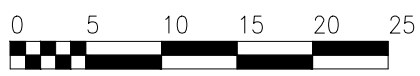
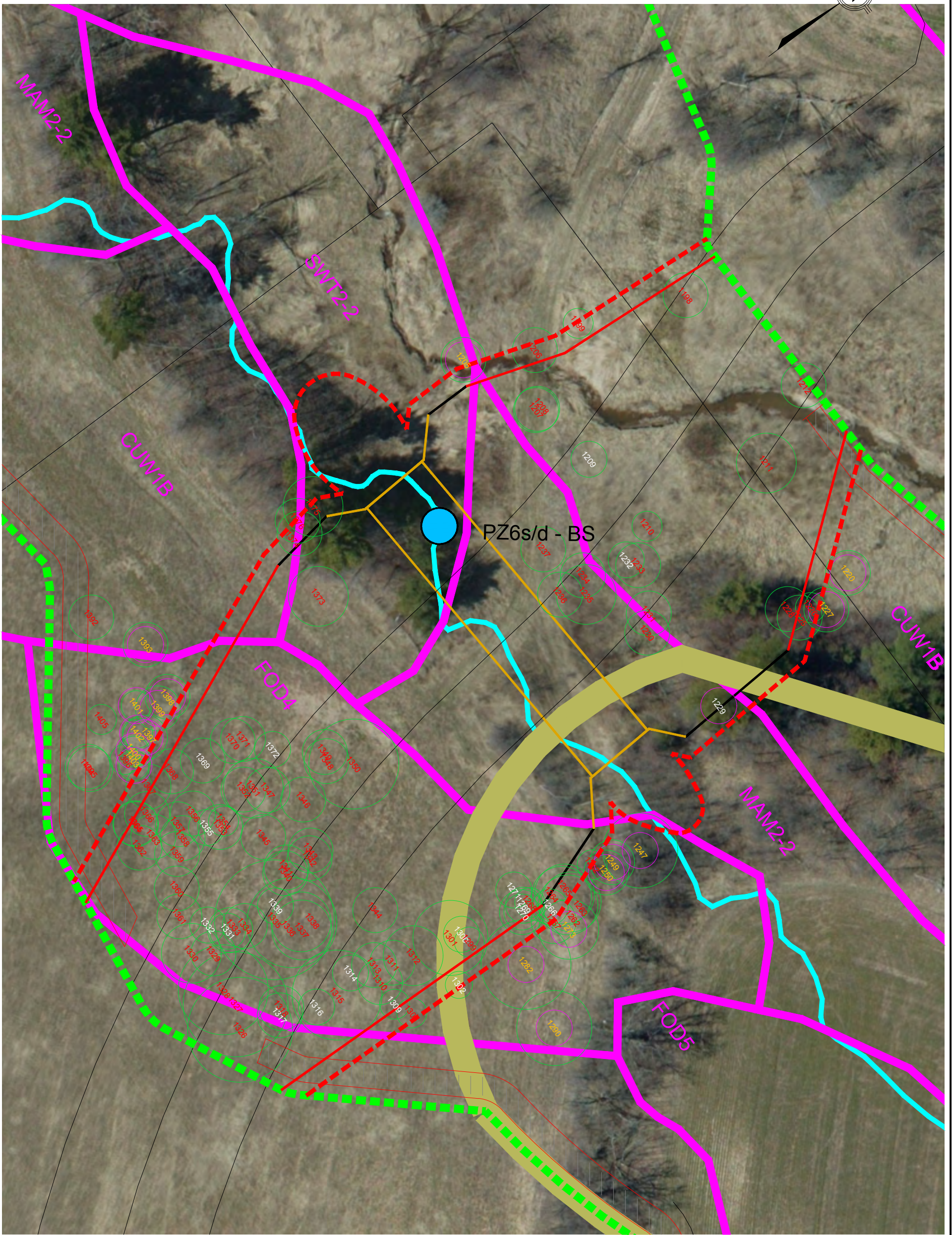
- Existing Joshua's Creek
- Proposed Grade
- Existing Grade
- Existing Contour Elevation
- ↓ Overland Flow Direction

MATTAMY PHASE 3 ADDENDUM TO THE JOSHUA'S CREEK TRIBUTARIES EIR/FSS

FIGURE 10.1R

SERVICES CROSSINGS OF STREAM CORRIDOR JC-6

MAY 2020



SCALE 1:500

Stonybrook Consulting Inc.
David Schaeffer Engineering Ltd.
Bird and Hale Limited
R.J. Burnside & Associates Limited
LGL Limited
GEO Morphix Ltd.
J.F. Sabourin and Associates Inc.

Legend

- Grading Limit - Option 1
- Limit of Disturbance - Option 1
- Culvert
- Core 11 Boundary
- NHS Boundary
- ELC Communities Boundary
- Creek Centreline

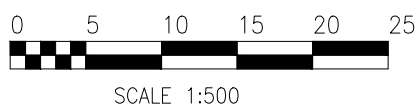
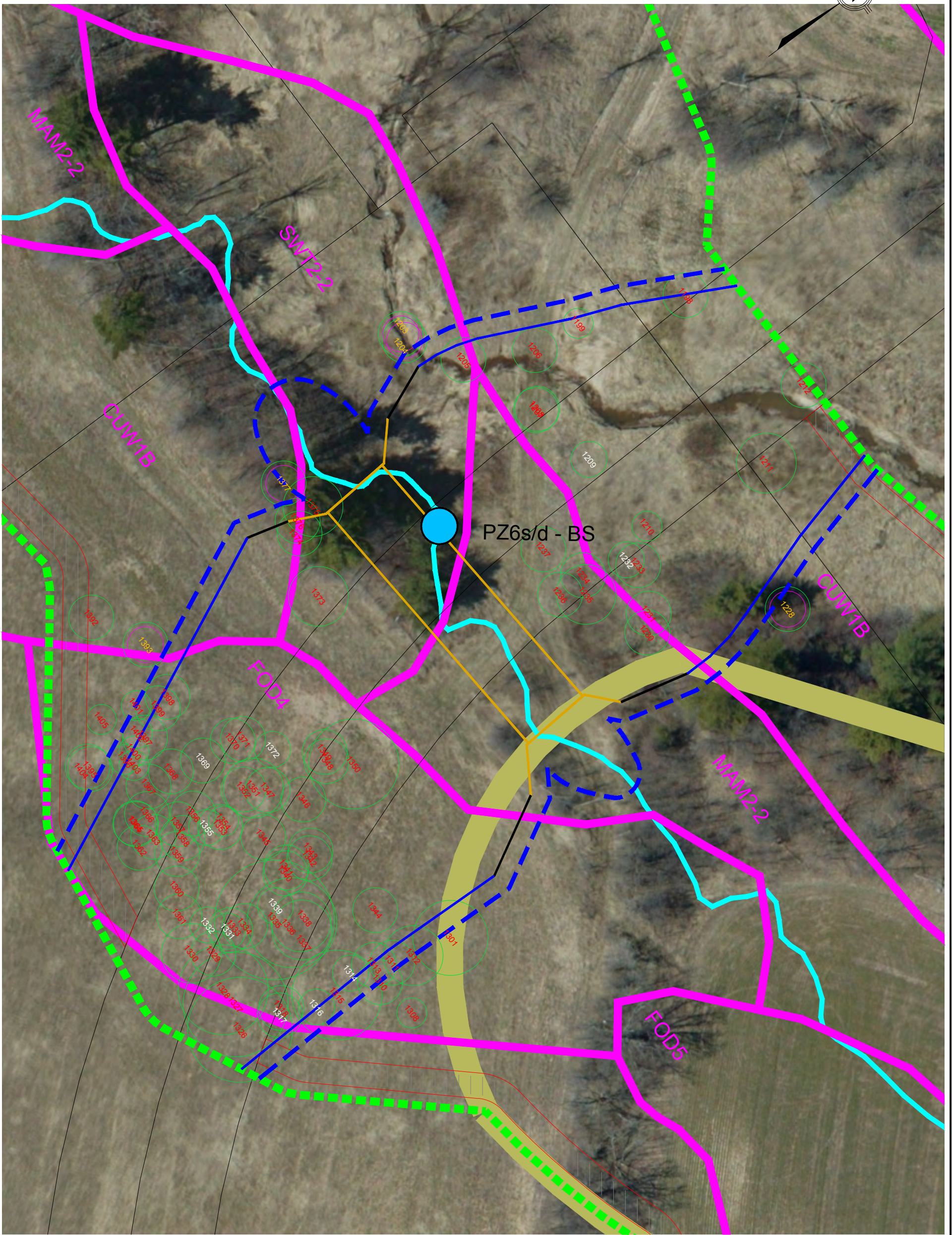
- 1238 Tree Identified for Removal
- 1227 Impacted Tree
- 1372 Dead Tree
- Dripline
- Tree Protection Zone
- Piezometre

MATTAMY PHASE 3 ADDENDUM
TO THE JOSHUA'S CREEK TRIBUTARIES
EIR/FSS

FIGURE 10A

TREE ASSESSMENT - ROAD OPTION 1

MAY 2020



Stonybrook Consulting Inc.
 David Schaeffer Engineering Ltd.
 Bird and Hale Limited
 R.J. Burnside & Associates Limited
 LGL Limited
 GEO Morphix Ltd.
 J.F. Sabourin and Associates Inc.

Legend

- Grading Limit - Option 2
- - - Limit of Disturbance - Option 2
- Culvert
- Core 11 Boundary
- - - - NHS Boundary
- ELC Communities Boundary
- Creek Centreline

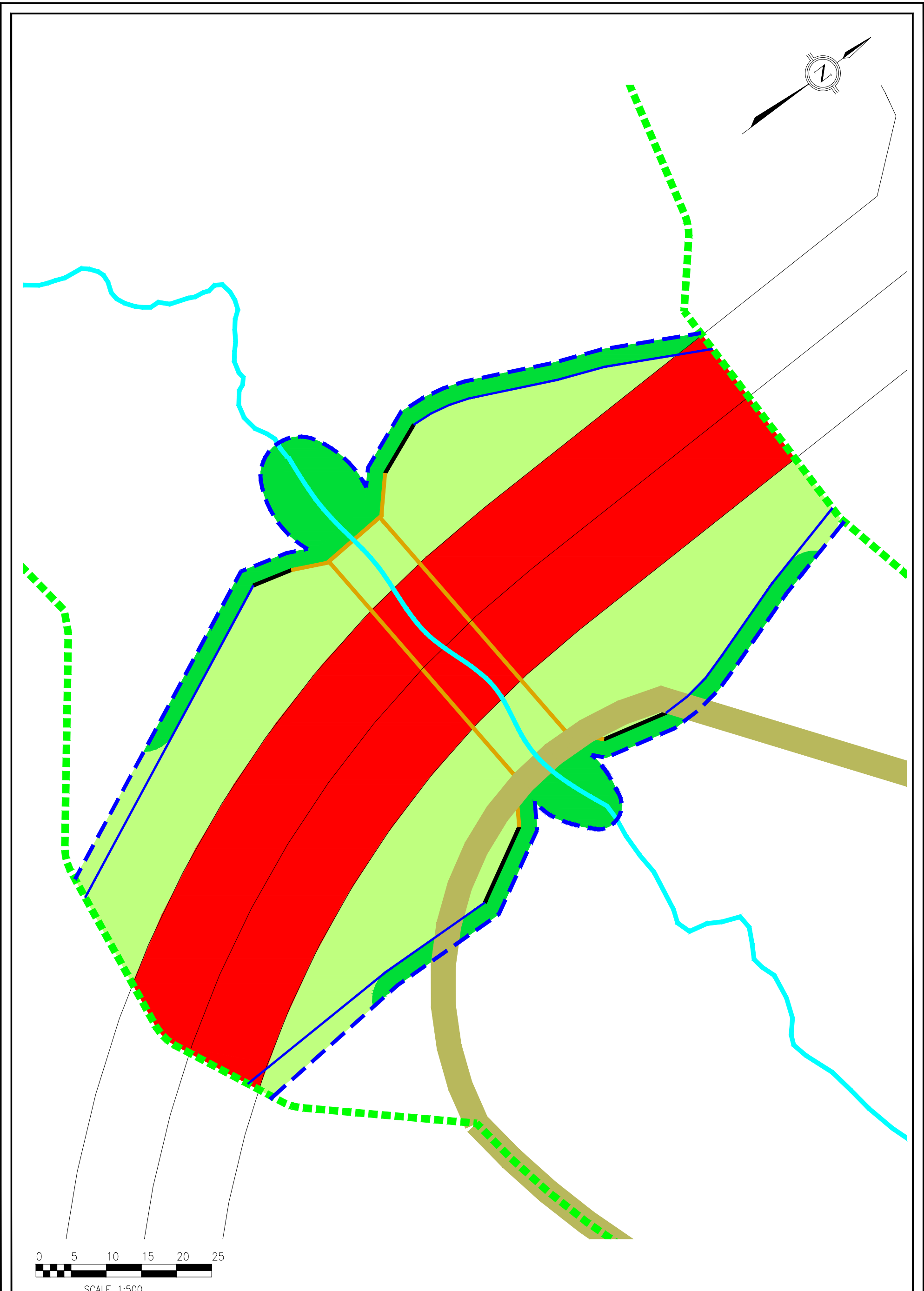
- 1236 Tree Identified for Removal
- 1227 Impacted Tree
- 1372 Dead Tree
- Dripline
- Tree Protection Zone
- Piezometre

MATTAMY PHASE 3 ADDENDUM
 TO THE JOSHUA'S CREEK TRIBUTARIES
 EIR/FSS

FIGURE 10B

TREE ASSESSMENT - ROAD OPTION 2

MAY 2020



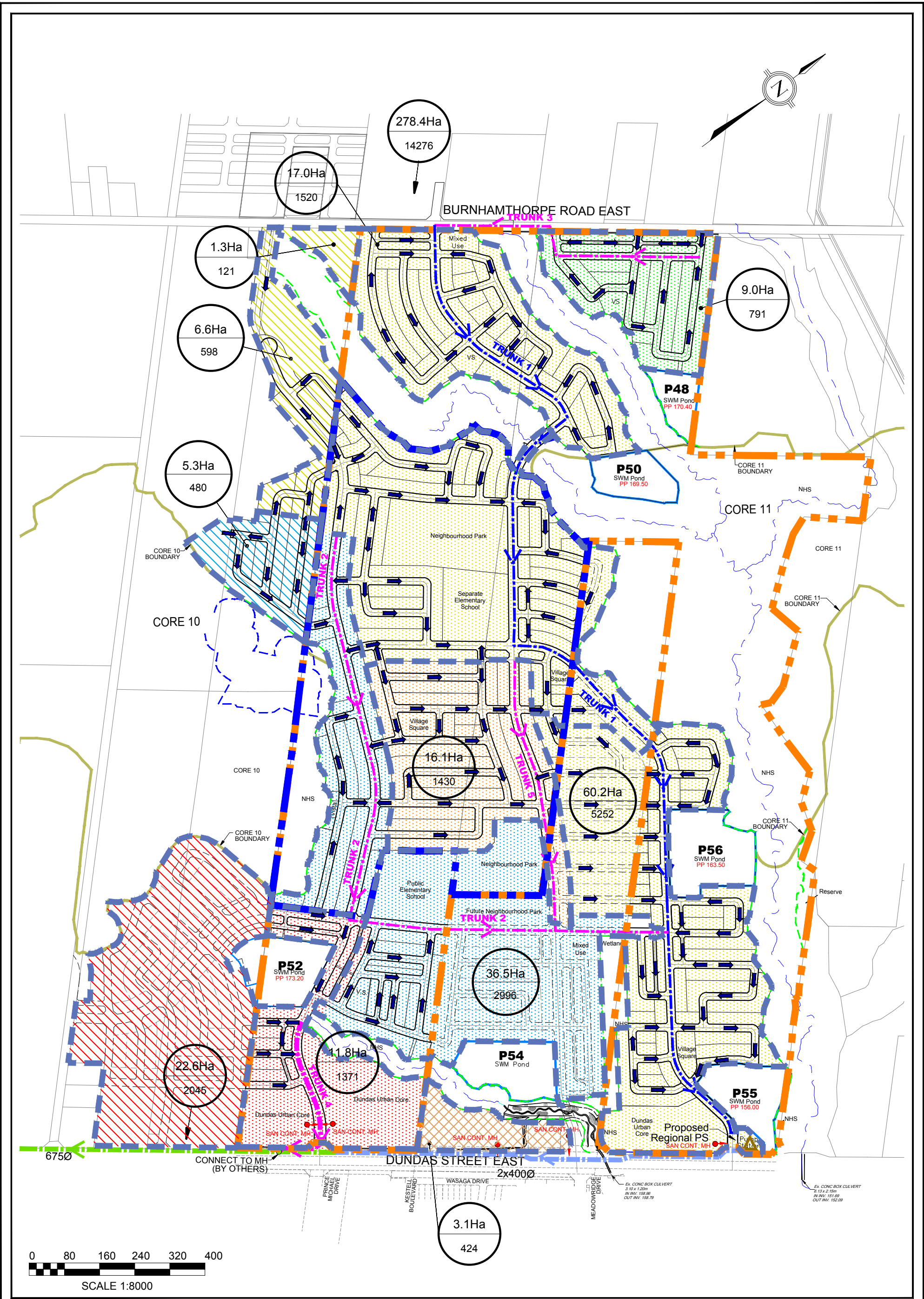
Stonybrook Consulting Inc.
 David Schaeffer Engineering Ltd.
 Bird and Hale Limited
 R.J. Burnside & Associates Limited
 LGL Limited
 GEO Morphix Ltd.
 J.F. Sabourin and Associates Inc.

Legend	
	Grading Limit - Option 2
	Limit of Disturbance - Option 2
	Core 11 Boundary
	NHS Boundary
	Creek Centreline
	Culvert
	Permanent Loss
	Restoration (Herbaceous Vegetation) - to satisfaction of CH, including herbaceous (near r-o-w), and shrubs and trees on lower elevations
	Restoration (Woody Vegetation) - to satisfaction of CH, to replicate previous habitat types

MATTAMY PHASE 3 ADDENDUM
 TO THE JOSHUA'S CREEK TRIBUTARIES
 EIR/FSS

FIGURE 10C
PROPOSED RESTORATION -
ROAD OPTION 2

MAY 2020



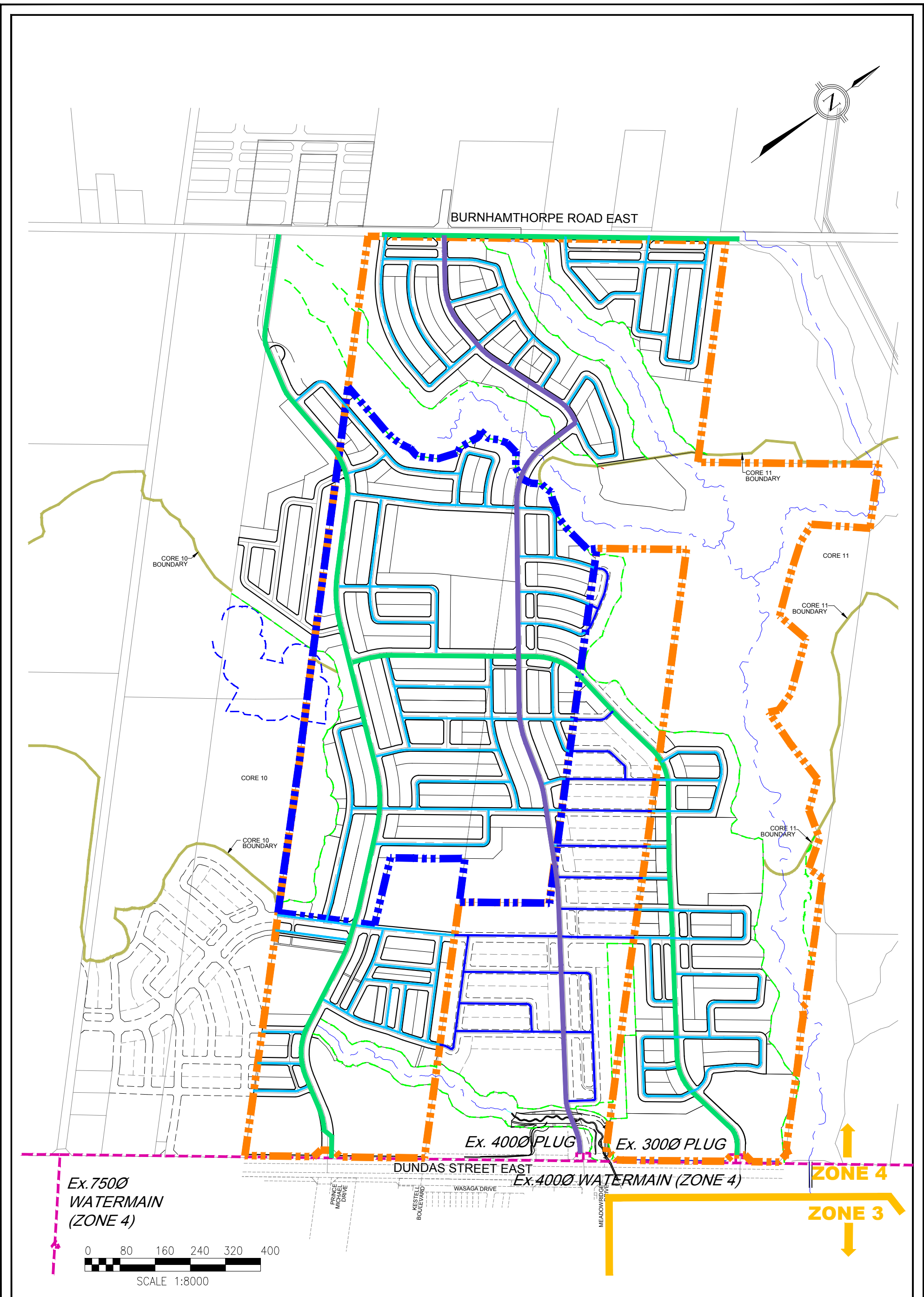
Stonybrook Consulting Inc.
 David Schaeffer Engineering Ltd.
 Bird and Hale Limited
 R.J. Burnside & Associates Limited
 LGL Limited
 GEO Morphix Ltd.
 J.F. Sabourin and Associates Inc.

- Legend**
- █ Mattamy Phase 3 Lands
 - █ Subject Lands
 - █ Wastewater Tributary Boundary
 - █ Proposed Wastewater Sewer (By Others)
 - █ Proposed Forcemain (By Others)
 - █ Minor Wastewater Trunk
 - █ Major Wastewater Trunk
 - █ Drainage Area to Local Trunks
 - █ External Drainage Area To Local Trunk
 - █ External Drainage to Trunk on Dundas
 - █ Drainage Area to Pump Station Along Dundas Street
 - █ Wastewater Flow Direction
 - █ Drainage Area
 - Population
 - Proposed Wastewater Pumping Station (Approximate Location)

MATTAMY PHASE 3 ADDENDUM
 TO THE JOSHUA'S CREEK TRIBUTARIES
 EIR/FSS

FIGURE 9.2R

**CONCEPTUAL
 WASTEWATER SERVICING**
 MAY 2020



Stonybrook Consulting Inc.
 David Schaeffer Engineering Ltd.
 Bird and Hale Limited
 R.J. Burnside & Associates Limited
 LGL Limited
 GEO Morphix Ltd.
 J.F. Sabourin and Associates Inc.

Legend

- Mattamy Phase 3 Lands
- Subject Lands
- Water Zone Boundary
- Local Watermain
- Local Watermain (By Others)
- 3000 Watermain
- 4000 Watermain
- NHS Limits
- Existing Watermain

MATTAMY PHASE 3 ADDENDUM
 TO THE JOSHUA'S CREEK TRIBUTARIES
 EIR/FSS

FIGURE 9.4R

**CONCEPTUAL
WATERMAIN SERVICING**

MAY 2020