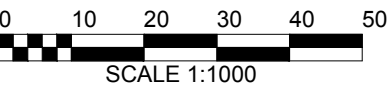


Note:
 TH-51 has been removed and the Argo dripline boundary has been extended westerly using a straight line between Argo stake D-10 and Mattamy Phase 3 stake TH-52



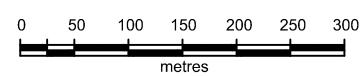
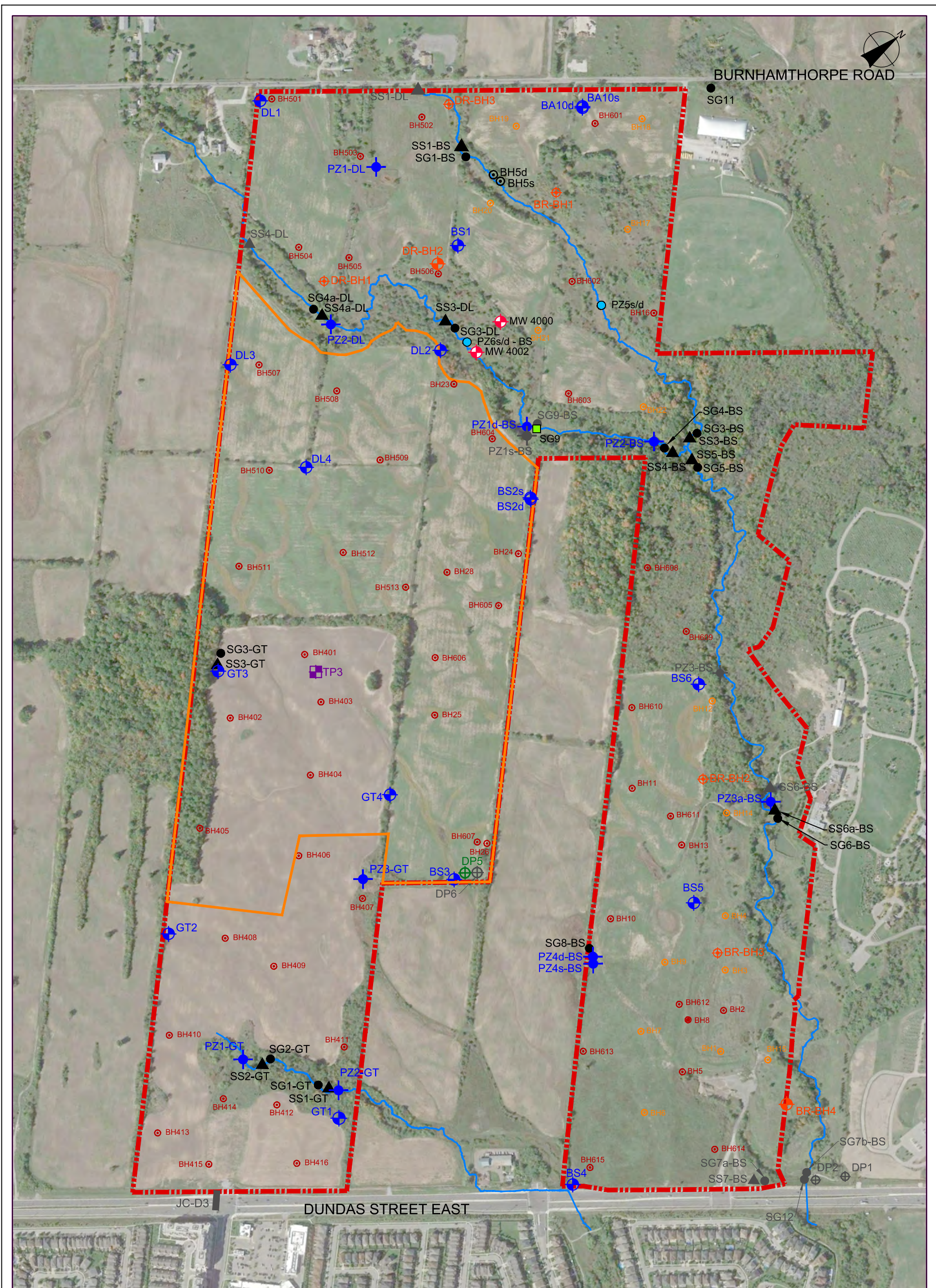
Stonybrook Consulting Inc.
 David Schaeffer Engineering Ltd.
 Bird and Hale Limited
 R.J. Burnside & Associates Limited
 LGL Limited
 GEO Morphix Ltd.
 J.F. Sabourin and Associates Inc.

- Legend**
- Wetland
 - Dripline
 - NOCSS Connection Between Survey Points
 - Linkages
 - Floodline
 - Surveyed TOB

- - - 15.0m Fisheries Setback
- - - NHS Boundary
- - - Stable Slope Sections
- Meander Belt Allowance (Including Erosion Setback)
- Stable TOB
- Creek Centreline

MATTAMY PHASE 3 ADDENDUM TO THE JOSHUA'S CREEK TRIBUTARIES EIR/FSS

FIGURE 3.1
MATTAMY/ARGO NHS INTERFACE
 MAY 2020



Legend

- - - EIR / FSS Study Area
- - - Mattamy Phase 3 Lands
- Monitoring Well (Shad, 2019)
- Monitoring Well
- + Piezometer
- Staff Gauge
- Piezometer (RJB, 2019)
- Staff Gauge (RJB, 2019)
- Test Pit (Eyles & Eyles, 2003)
- + Drivepoint (NOCSS, 2006)
- Borehole (AMEC, 2006)
- Borehole (Source unknown)
- Borehole (AME, 2002)
- + Borehole (AME, 2014)
- ▲ Surface Water Monitoring Station
- Culvert

*Note - Instrumentation shown in grey is destroyed or missing.

Stonybrook Consulting Inc.
David Schaeffer Engineering Ltd.
Bird and Hale Limited
R.J. Burnside & Associates Limited
AquaLogic Consulting
Stantec Consulting Ltd.
J.F. Sabourin and Associates Inc.

MATTAMY PHASE 3 ADDENDUM
 TO THE JOSHUA'S CREEK TRIBUTARIES
 EIR/FSS

FIGURE 4.1R
Drilling and Monitoring Locations

May 2020