

## GENERAL NOTES:

### MAINTENANCE AND ACCEPTANCE:

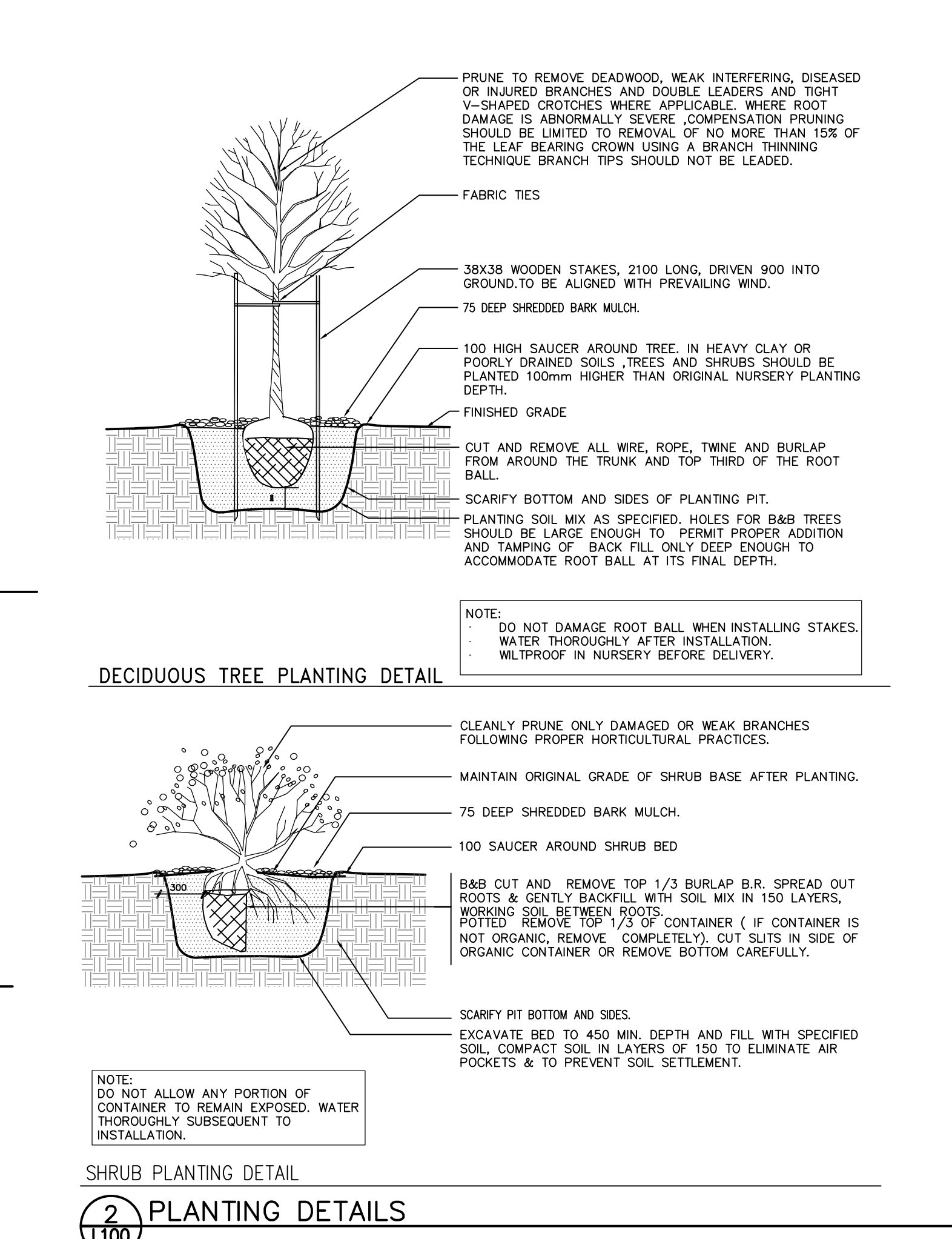
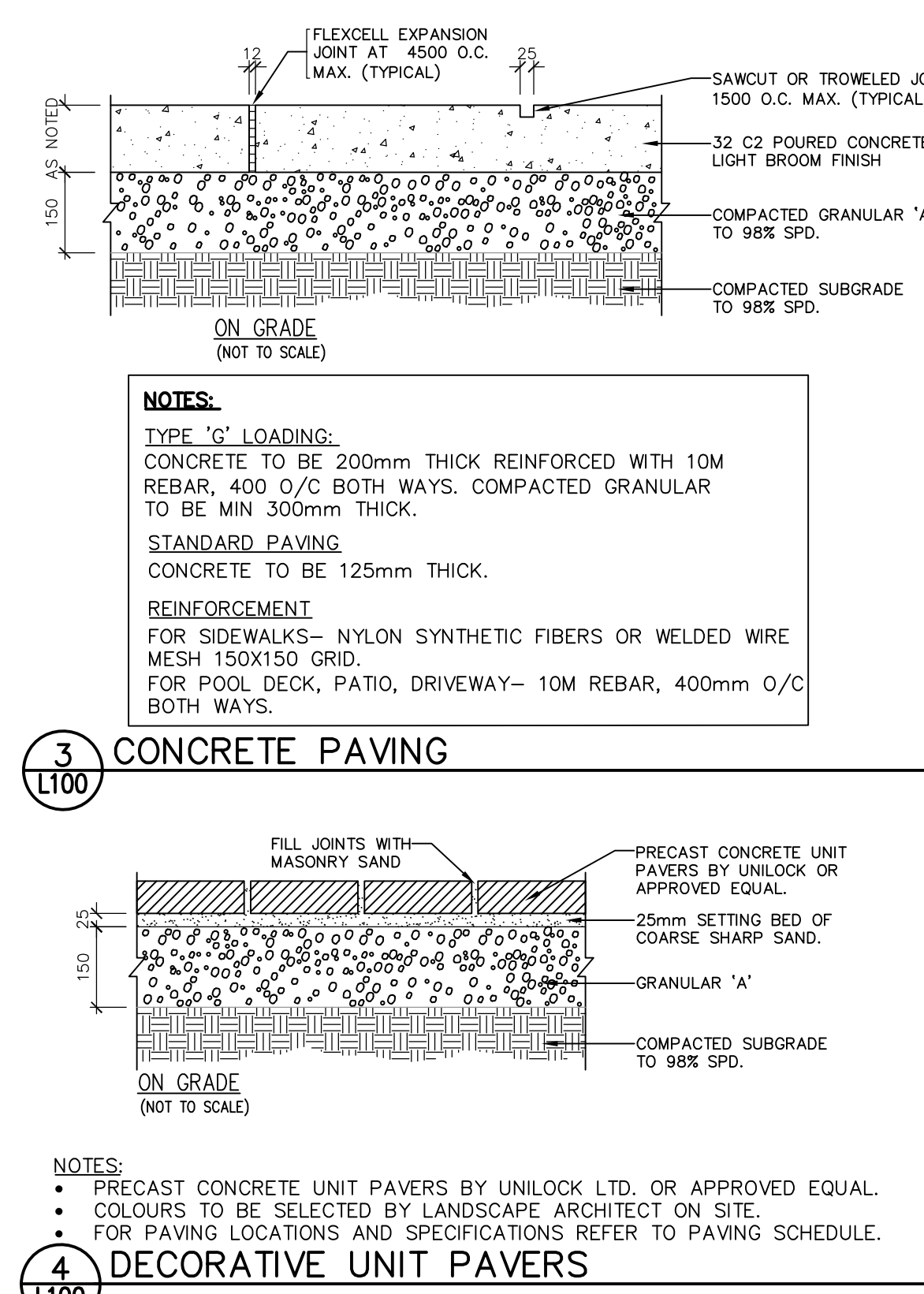
- ALL PLANT MATERIAL SHALL BE MAINTAINED BY THE CONTRACTOR IMMEDIATELY AFTER ANY PLANTING HAS BEEN INSTALLED AND SHALL CONTINUE UNTIL THE DATE OF FINAL ACCEPTANCE.
- SUCH MAINTENANCE SHALL INCLUDE ALL MEASURES NECESSARY TO ESTABLISH AND MAINTAIN ALL PLANTS IN AN ACCEPTABLE, WOODS AND HEALTHY GROWING CONDITION INCLUDING CULTIVATING AND WEEDING, WATERING WHEN REQUIRED, PRUNING AND MAINTENANCE OF ALL ACCESSORIES.
- AT THE TIME OF INSPECTION FOR FINAL AND FINAL ACCEPTANCE, ALL PLANTING BEDS AND TREE PITS SHALL BE FRESHLY CULTIVATED, FREE OF WEEDS, LEAVES, BROKEN BRANCHES AND RUBBISH AND SHALL BE IN A NEAT AND TIDY CONDITION.
- ALL PLANT MATERIAL TO BE GUARANTEED FOR A PERIOD OF 2 (TWO) YEARS FROM THE DATE OF ACCEPTANCE BY THE LANDSCAPE ARCHITECT AND LOCAL AUTHORITY UNLESS OTHERWISE NOTED.
- MAINTAIN PLANTING BEDS AND TREE PITS FREE OF WEEDS THROUGHOUT THE GUARANTEE PERIOD.
- THE DEVELOPER SHALL REGULARLY REMOVE DEBRIS FROM THE WEEDLAND UNTIL THE COMPLETION OF A BUILDING CONSTRUCTION WITHIN THE DEVELOPMENT.

### UTILITIES:

- APPLICANT IS RESPONSIBLE FOR OBTAINING NECESSARY APPROVALS FROM THE UTILITY COMPANIES FOR WORKS WITHIN THE MUNICIPAL BOULEVARD.
- ALL UTILITIES WITHIN THE BOULEVARDS MUST BE LOCATED PRIOR TO COMMENCING CONSTRUCTION WITHIN THE BOULEVARD.

### UNIT PAVING:

- PAVERS SHALL BE PRECAST CONCRETE UNIT PAVERS WITH MIN. 5500 P.S.I. (3800 P.S.I.) COMPRESSIVE STRENGTH AND A WATER ABSORPTION NOT EXCEEDING 5% AND A FREEZE-THAW RESISTANCE EQUAL TO C.S.A. A-82-2 (1997).
- SETTING BED SHALL CONSIST OF SHARP, CLEAN, COARSE SAND OR CRUSHED LUMPSTONE OR CRUSHED GRANULAR SAND FOR JOINTS SHALL BE A CLEAN, NATURAL GRAVEL, CRUSHED STONE OR ROCK.
- INSTALL GRANULAR BASE AND COMPACT TO A MINIMUM 98% STANDARD PROCTOR DENSITY UNTIL THE MIN. SPECIFIED DEPTH AS DETAILED, HAS BEEN ESTABLISHED.
- LOOSELY PLACED CONCRETE SAND OR SCREENINGS TO A UNIFORM DEPTH OF 50mm. (2") MIN.
- MAINTAIN JOINTS UNIFORM AND CLOSELY BUTTED THROUGHOUT.
- WHERE NECESSARY, SAW CUT PAVERS TO PRODUCE A SHARP VERTICAL CUT WITHOUT DAMAGED EDGES, AND TO FIT ACCURATELY.
- AFTER COMPLETION OF INSTALLATION, COMPACT PAVING BY MEANS OF A VIBRATING PLATE TAMPER.
- FILL THE JOINTS WITH FINE SAND, BY BRUSHING AND SWEEPING, HOSE PAVING WITH FINE WATER SPRAY.



## LANDSCAPE GENERAL NOTES

## SITE PLAN PLANT LIST

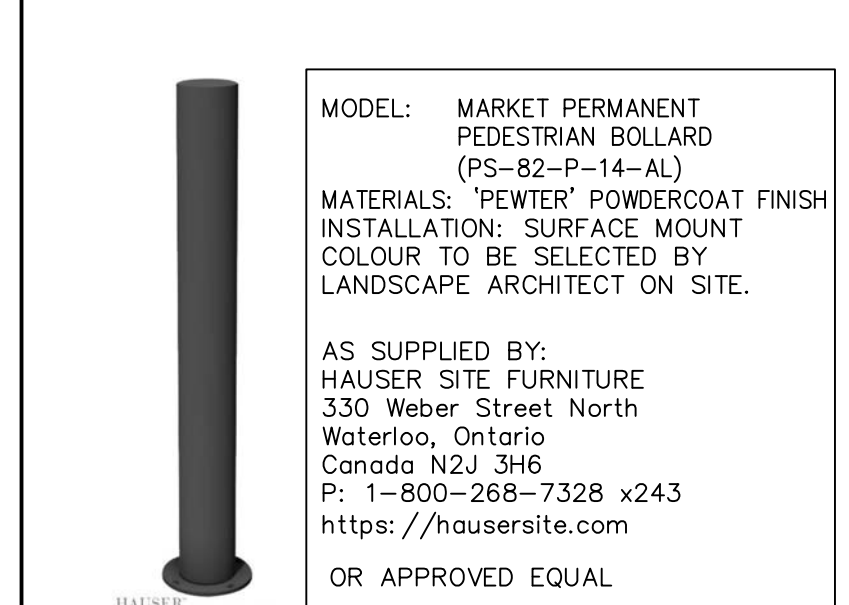
| KEY                           | QTY. | BOTANICAL NAME                                 | COMMON NAME                      | HEIGHT | SPREAD | CAL. | SPACING  | COND. | REMARKS   | ON | DT | ST | CAUTION |
|-------------------------------|------|--|----------------------------------|--------|--------|------|----------|-------|-----------|----|----|----|---------|
| <b>DECIDUOUS TREES</b>        |      |  |                                  |        |        |      |          |       |           |    |    |    |         |
| QT                            | 03   | <i>Quercus macrocarpa</i>                      | Burr Oak                         | 4000   | 2000   | 60   | as shown | WB    | FULL FORM | ✓  | ✓  | ✓  |         |
| G1                            |      | <i>Quercus macrocarpa</i>                      | Burr Oak                         | 4000   | 2000   | 60   | as shown | WB    | FULL FORM | ✓  | ✓  | ✓  |         |
| <b>DECIDUOUS SHRUBS</b>       |      |  |                                  |        |        |      |          |       |           |    |    |    |         |
| Ro                            | 29   | <i>Rhus aromatica</i> 'Gra-low'                | Fragrant Sumac                   | 600    | 900    | CG   | as shown | CG    | FULL FORM | ✓  | ✓  | ✓  |         |
| <b>EVERGREEN SHRUBS</b>       |      |  |                                  |        |        |      |          |       |           |    |    |    |         |
| Jsc                           | 22   | <i>Juniperus sabina</i> 'Arcadia'              | Arcadia Juniper                  |        |        | 900  | CG       | CG    | FULL FORM | ✓  | ✓  | ✓  |         |
| <b>PERENNIALS AND GRASSES</b> |      |  |                                  |        |        |      |          |       |           |    |    |    |         |
| ca                            | 26   | <i>Colymbosia x acutiflora</i> 'Karl Foerster' | Karl Foerster Feather Reed Grass | 2600   |        |      | 600      | CG2   | FULL FORM | ✓  | ✓  | ✓  |         |
| hd                            | 48   | <i>Hemerocallis 'Stella D'oro'</i>             | Stella D'oro Daylily             | 2600   |        |      | 600      | CG2   | FULL FORM | ✓  | ✓  | ✓  |         |
| <b>BUFFER PLANT LIST</b>      |      |  |                                  |        |        |      |          |       |           |    |    |    |         |
| KEY                           | QTY. | BOTANICAL NAME                                 | COMMON NAME                      | HEIGHT | SPREAD | CAL. | SPACING  | COND. | REMARKS   | ON | DT | ST | CAUTION |
| <b>DECIDUOUS TREES</b>        |      |  |                                  |        |        |      |          |       |           |    |    |    |         |
| CO1                           | 02   | <i>Celtis occidentalis</i>                     | Hackberry                        | 4000   | 2000   | 60   | as shown | WB    | FULL FORM | ✓  | ✓  | ✓  |         |
| QM1                           | 01   | <i>Quercus macrocarpa</i>                      | Burr Oak                         | 4000   | 2000   | 60   | as shown | WB    | FULL FORM | ✓  | ✓  | ✓  |         |
| AR2                           | 02   | <i>Acer rubrum</i>                             | Red Maple                        | 2500   | 1000   |      | as shown | WB    | FULL FORM | ✓  | ✓  | ✓  |         |
| CO2                           | 01   | <i>Celtis occidentalis</i>                     | Hackberry                        | 2500   | 1000   |      | as shown | WB    | FULL FORM | ✓  | ✓  | ✓  |         |
| OV2                           | 03   | <i>Ostrya virginiana</i>                       | Ironwood                         | 2500   | 1000   |      | as shown | WB    | FULL FORM | ✓  | ✓  | ✓  |         |
| <b>EVERGREEN SHRUBS</b>       |      |  |                                  |        |        |      |          |       |           |    |    |    |         |
| TO                            | 06   | <i>Thuja occidentalis</i>                      | Swamp White Cedar                | 1000   |        |      | as shown | WB    | FULL FORM | ✓  | ✓  | ✓  |         |
| <b>DECIDUOUS SHRUBS</b>       |      |  |                                  |        |        |      |          |       |           |    |    |    |         |
| CO2                           | 16   | <i>Cornus sericea</i>                          | Red Osier Dogwood                | 600    |        | 900  | CG       | CG    | FULL FORM | ✓  | ✓  | ✓  |         |
| DI2                           | 12   | <i>Dieris lonicera</i>                         | Bush Honeysuckle                 | 600    |        | 900  | CG       | CG    | FULL FORM | ✓  | ✓  | ✓  |         |
| PO2                           | 06   | <i>Physocarpus opulifolius</i>                 | Common Ninebark                  | 600    |        | 900  | CG       | CG    | FULL FORM | ✓  | ✓  | ✓  |         |
| V02                           | 14   | <i>Viburnum dentatum</i>                       | Arrowwood Viburnum               | 600    |        | 900  | CG       | CG    | FULL FORM | ✓  | ✓  | ✓  |         |

**PLANTING NOTES:**  
 CHECK ALL QUANTITIES.  
 REPORT ANY DISCREPANCIES TO THE LANDSCAPE ARCHITECT.  
 THE QUANTITIES INDICATED ON THE PLAN SUPERSEDE THE TOTALS OF THE PLANT LIST.  
 THE LAYOUT OF ALL PLANT MATERIAL IS TO BE APPROVED BY THE LANDSCAPE ARCHITECT PRIOR TO PLANTING.

## PROPOSED PLANT LIST

|       |  |  |
|-------|--|--|
| 1/2"  | WILD CRANE'S-BILL (GERANIUM MACULATUM)   | APPLY TERRASEED MIX FOR DISTURBED AREAS AT A RATE OF 22-25 KG/HECTARE (OR 250g/90 sqm. FOR SMALLER AREAS) IN COMBINATION WITH A GENERALLY ACCEPTED MULCHING METHOD OVER 300mm OF TOPSOIL FOR "NON-FILLED" AREAS AND 600mm OF TOPSOIL FOR "FILLED" AREAS. |
| 1/2"  | PINK SANDWICH (ANTENNARIA DIAMENSINA)  |  |
| 1/2"  | GIANT BLUE CHLOISH (CALOPHYLLUM GIGANTICUM)  |  |
| 1/2"  | WOODLAND GOLDENROD (SOLIDAGO CANADENSIS)   |  |
| 1/2"  | GOTTLEBUSH GRASS (ELOTUS HYSTRIX)  |  |
| 3/4"  | ELDERBERRY (SAMBUCUS CANADENSIS)   |  |
| 60"   | WOODLAND SUNFLOWER (HELIANTHUS DIVARICATUS)  |  |
| 25"   | RIVERSIDE WILD YIE (EUPHORBIA HYPERICIFOLIA)   |  |
| 15"   | ROUGH AVEENS (COLM LACINIAUM)  |  |
| 15"   | SENSITIVE FENNEL (CONCASA SENSIBILIS)  |  |
| 15"   | BLUE WOOD (ASTER CORDFOLIUS)   |  |
| 20"   | DOG EAR ANEMONES (DORGLIO FLEXICAULIS)   |  |
| 100 x | SEED MIXTURE SUPPLIED BY ONTARIO SEED COMPANY LTD. OR APPROVED EQUAL.  |  |
|       | ONTARIO SEED COMPANY<br>330 PHILIP STREET, WATERLOO,<br>ONT. N2L 2L5 CANADA<br>TEL (519) 886-0557 FAX (519) 886-0605 |  |

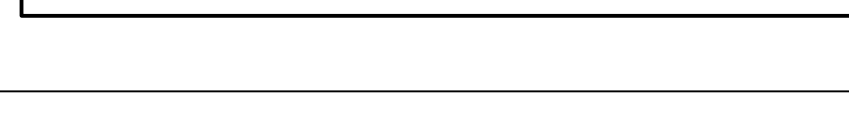
## SEED MIX



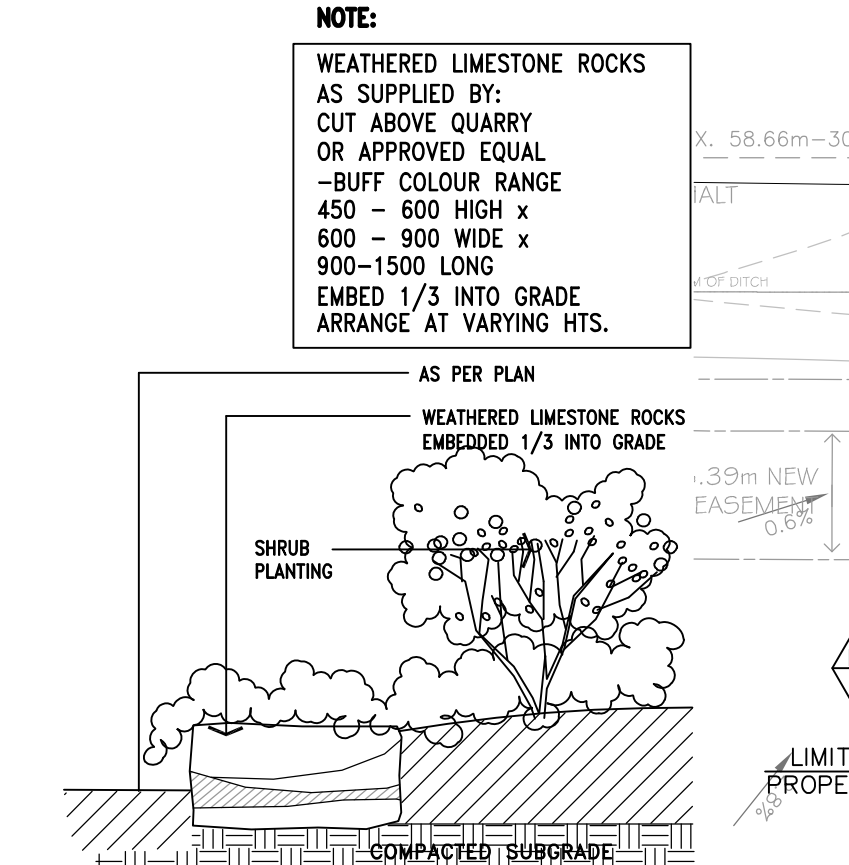
## PEDESTRIAN BOLLARD



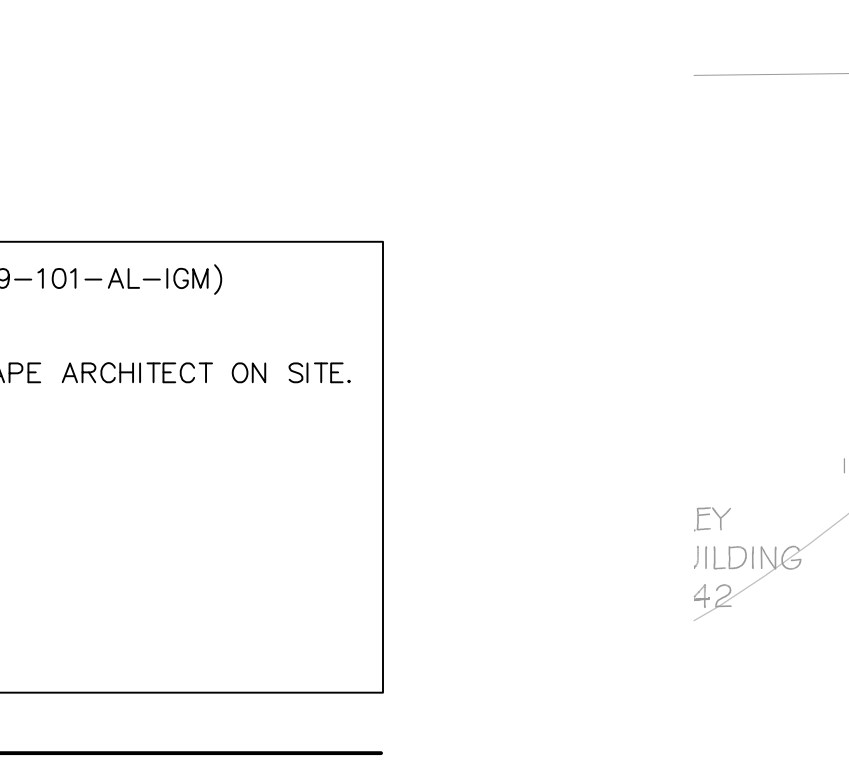
## GARBAGE ENCLOSURE SCREEN



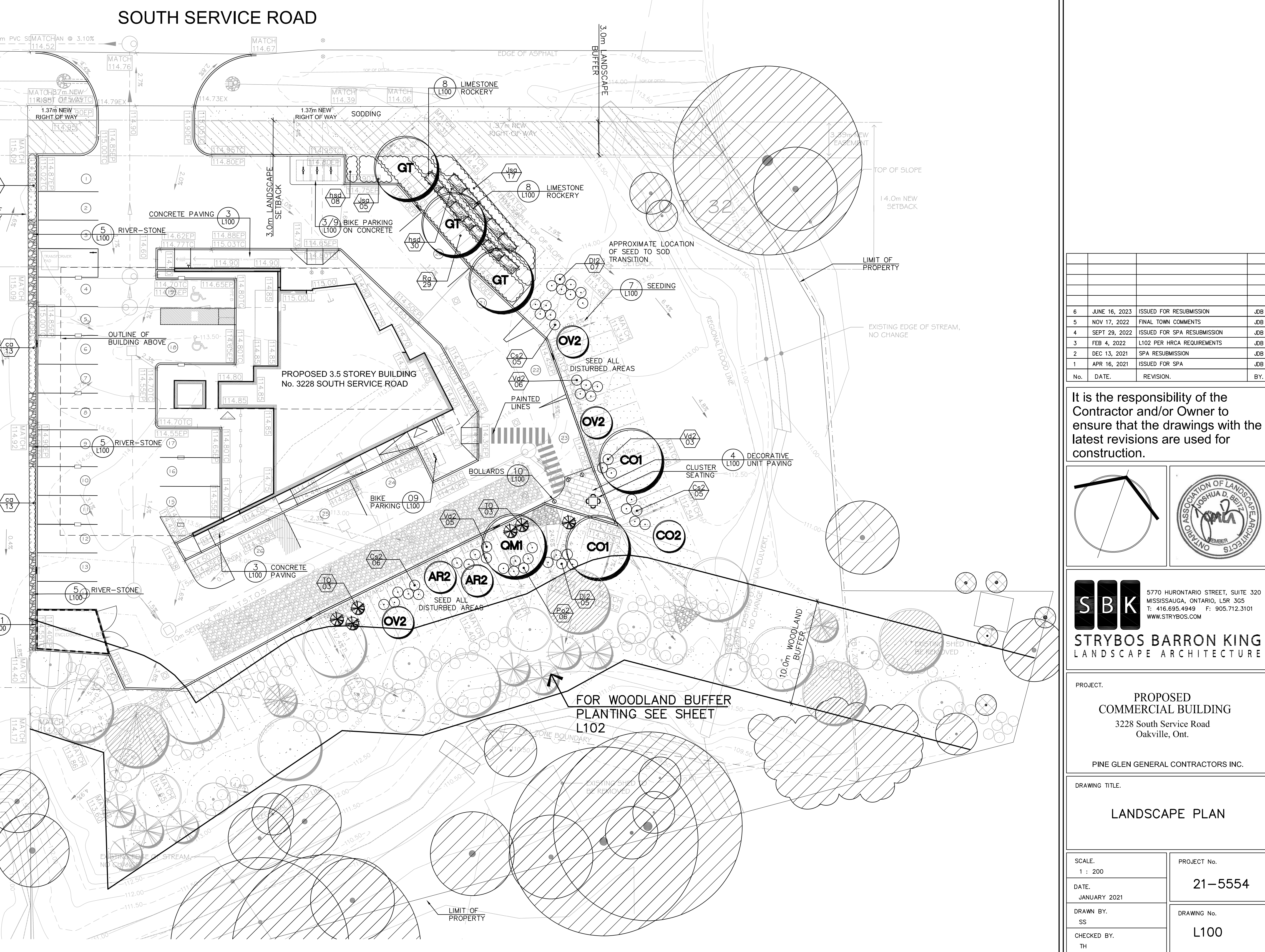
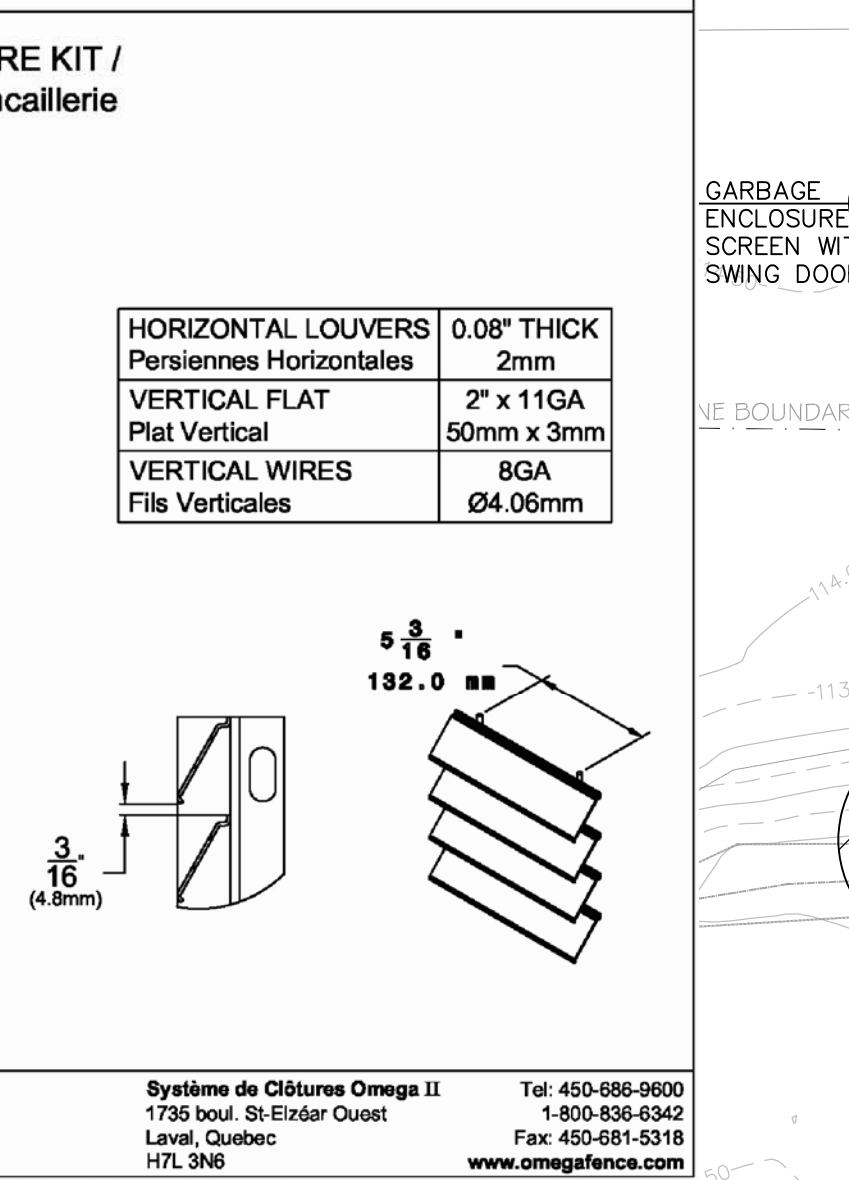
## RIVERSTONE



## ARMOURSTONE ROCKERY AND PLANTING



## OMEGA 80 PANEL MOUNTED ON FLANGED POST (HEIGHT 77"H)



## GENERAL NOTES

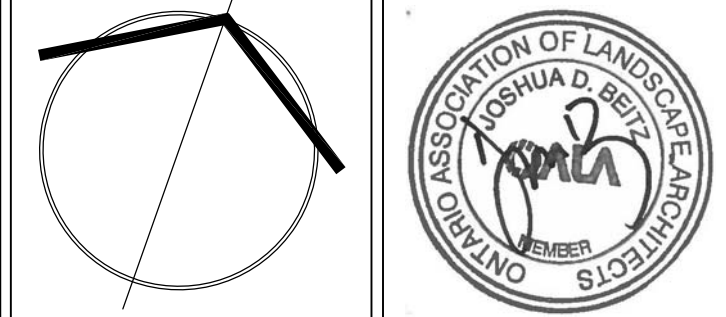
VERIFY ALL DIMENSIONS. DO NOT SCALE DRAWINGS. REPORT ANY DISCREPANCIES, DISCOVERED ERRORS OR OMISSIONS TO THE LANDSCAPE ARCHITECT BEFORE PROCEEDING. IT IS ADVISED THAT CONTRACTORS CONTACT THE LANDSCAPE ARCHITECT PRIOR TO CONSTRUCTION TO ENSURE THE USE OF THE LATEST REVISED DRAWINGS. DRAWINGS AND SPECIFICATIONS ARE THE PROPERTY OF THE LANDSCAPE ARCHITECT.

## KEY MAP LEGEND

- EXISTING TREE TO REMAIN
- PROPOSED DECIDUOUS TREE
- PROPOSED CONIFEROUS TREE
- PROPOSED SHRUBS
- PROPOSED GRASSES & PERENNIALS
- PROPOSED PLANT KEY (SEE PLANT LIST)
- PROPOSED PLANT QUANTITY
- SODDING
- SEEDING
- DECORATIVE UNIT PAVING

| No. | DATE.         | REVISION.                   | BY. |
|-----|---------------|-----------------------------|-----|
| 6   | JUNE 16, 2023 | ISSUED FOR RESUBMISSION     | JCB |
| 5   | NOV 17, 2022  | FINAL TOWN COMMENTS         | JCB |
| 4   | SEPT 29, 2022 | ISSUED FOR SPA RESUBMISSION | JCB |
| 3   | FEB 4, 2022   | L102 FOR HIGH REQUIREMENTS  | JCB |
| 2   | DEC 13, 2021  | SPA RESUBMISSION            | JCB |
| 1   | APR 16, 2021  | ISSUED FOR SPA              | JCB |

It is the responsibility of the Contractor and/or Owner to ensure that the drawings with the latest revisions are used for construction.



**SBK** 5770 HURONTARIO STREET, SUITE 320  
 MISSISSAUGA, ONTARIO, L5R 3G5  
 T: 416-695-4848 F: 905-712-3101  
 WWW.STRYBOS.COM

**STRYBOS BARRON KING**  
 LANDSCAPE ARCHITECTURE

**PROJECT:**  
 PROPOSED COMMERCIAL BUILDING  
 3228 South Service Road  
 Oakville, Ont.

**PINE GLEN GENERAL CONTRACTORS INC.**

**DRAWING TITLE:** LANDSCAPE PLAN

|                    |                     |
|--------------------|---------------------|
| SCALE: 1 : 200     | PROJECT No. 21-5554 |
| DATE: JANUARY 2021 | DRAWING No. L100    |
| DRAWN BY: SS       | CHECKED BY: TH      |