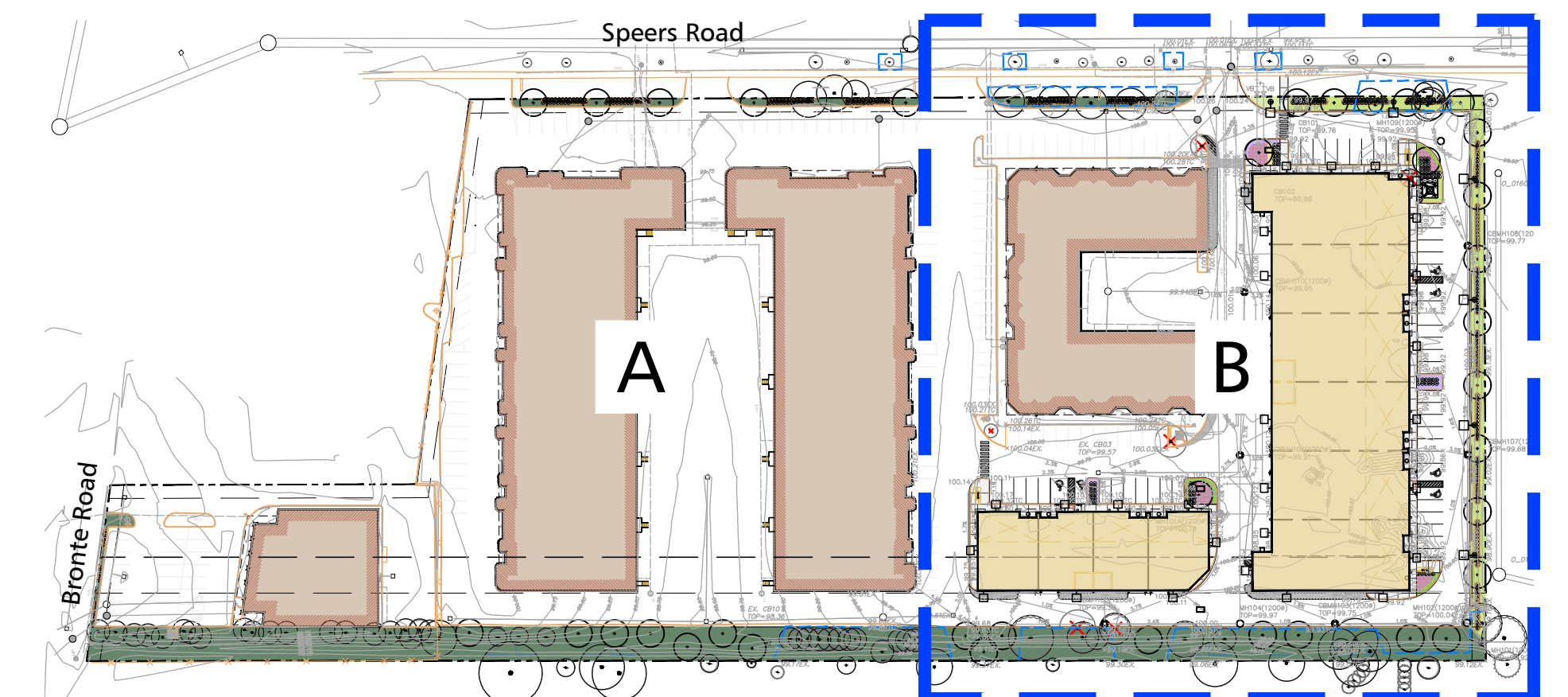


LANDSCAPE PLAN B
1:300



KEY PLAN
N.T.S.

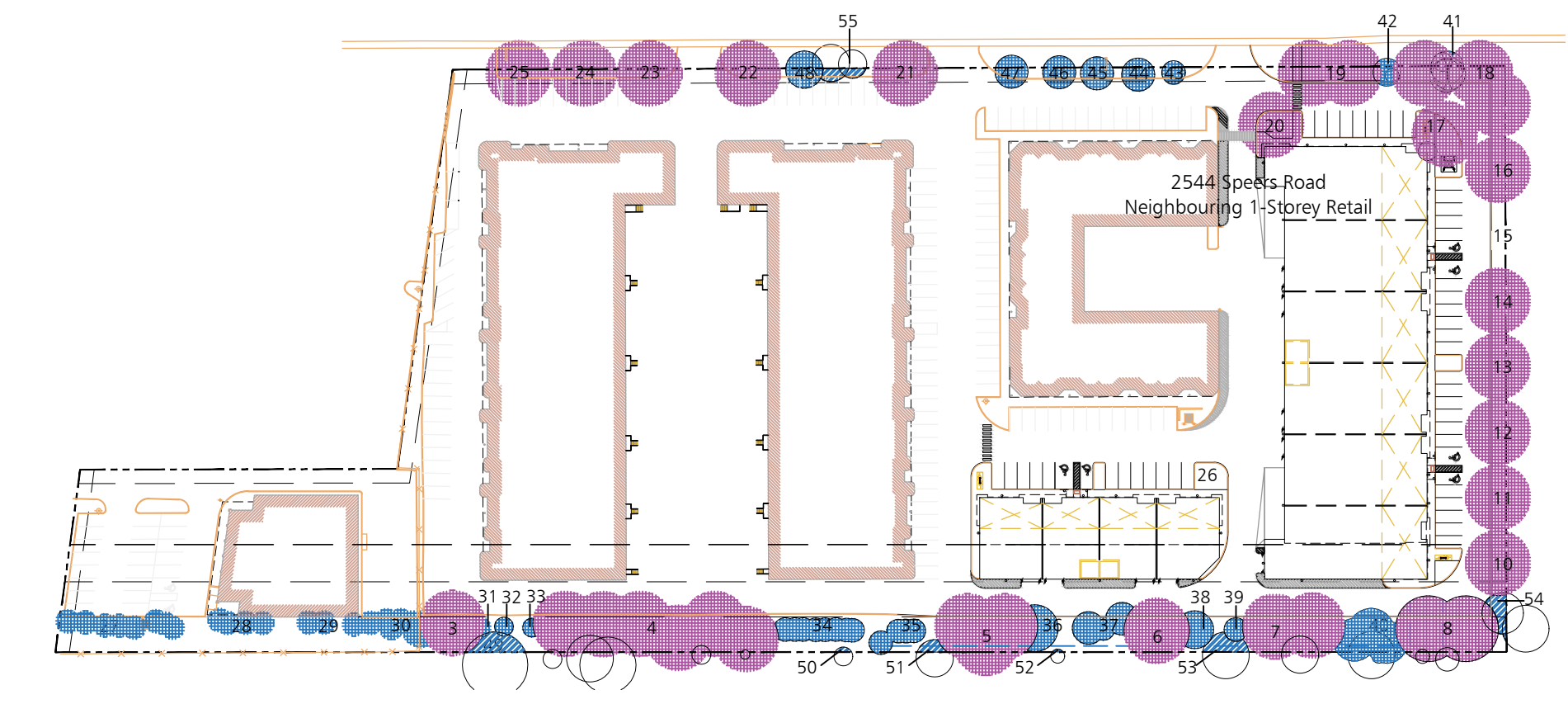
TREE GROUP	TREE SPECIES	STATURE (S,M,L)	SOIL VOLUME PER TREE (m³)	CANOPY AREA (m²)
3	Prunus serotina	L	34	154
4	Acer saccharum (3)	L	34	686
5	Acer saccharum (3)	L	34	294
6	Prunus serotina	L	34	154
7	Quercus macrocarpa (2)	L	34	260
8	Prunus serotina (2)	L	34	260
10	Quercus rubra	L	44	145
11	Quercus rubra	L	44	154
12	Quercus rubra	L	44	154
13	Quercus rubra	L	44	154
14	Gleditsia triacanthos 'Skyline'	L	44	154
15	Gleditsia triacanthos 'Skyline'	L	44	154
16	Gleditsia triacanthos 'Skyline'	L	44	154
17	Acer x freemanii	L	38	138
18	Gleditsia triacanthos 'Skyline'	L	44	398
19	Quercus rubra (2)	L	44	261
20	Acer x freemanii	L	35	151
21	Celtis occidentalis	L	50	154
22	Quercus rubra	L	72	154
23	Quercus rubra	L	72	154
24	Quercus rubra	L	72	154
25	Quercus rubra	L	72	154
26	Acer x freemanii	L	34	154

NOTES
1. Soil volume in street boulevard has been included in soil volume calculations for proposed trees 18 to 25.

TREE GROUP	TREE SPECIES	STATURE (S,M,L)	SOIL VOLUME PER TREE (m³)	CANOPY AREA (m²)
27	Conifers (8)	M	34	123
28	Conifers (3), Deciduous (1)	M	34	62
29	Conifers (2)	M	34	35
30	platanoides, Quercus alba, Acer	M & L	34	95
31	Thuja occidentalis	S	34	4
32	Thuja occidentalis	S	34	13
33	Thuja occidentalis	S	34	8
34	Thuja occidentalis (8)	S	34	88
35	Thuja occidentalis (3)	S	34	55
36	Pinus nigra	M	34	40
37	Pinus nigra (3)	M	34	71
38	Pinus nigra	M	34	37
39	Pinus nigra	M	34	17
40	Quercus alba (3), Fraxinus sp.	L	34	120
41	Quercus alba (2)	L	44	0.4
42	Fraxinus species	L	44	
43	Rhamnus cathartica, Quercus alba	S & L	44	14
44	Acer platanoides	L	58	20
45	Acer platanoides	L	58	38
46	Acer platanoides	L	58	38
47	Acer platanoides	L	58	38
48	Quercus bicolor	L	50	50

TREE GROUP	TREE SPECIES	STATURE (S,M,L)	SOIL VOLUME PER TREE (m³)	CANOPY AREA (m²)
49	Acer saccharinum	L	n/a	34
50	Rhus typhina	S	n/a	3
51	Betula papyrifera	M	n/a	11
52	Juniperus species	S	n/a	1
53	Acer saccharinum	L	n/a	26
54	Pinus nigra	M	n/a	23
55	Quercus bicolor (2)	L	n/a	21

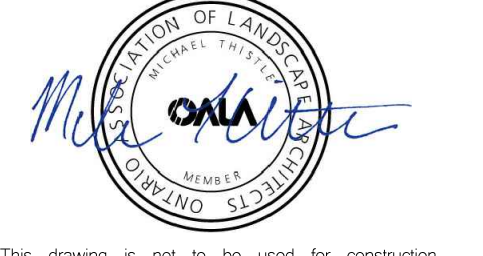
Total Site Area	31,800 m²
Target Canopy Coverage	20%
Target Canopy Area	6360 m²
Total Canopy Coverage	6374.6 m²



CANOPY COVER PLAN
N.T.S.

Pearce McCluskey Architects
2303 Dufferin Drive - Mississauga, Ontario L4S 1X2
www.pmaarchitects.ca 1.905.807.2444

B T i
Baker Turner Inc.
Landscape Architecture | Site Design



This drawing is not to be used for construction unless signed by partner in charge.
Contractors must verify all dimensions and be responsible for same, report any discrepancies to the architect before commencing the work.
Prints are not to be scaled.

All drawings and related documents are the sole copyright property of the architect and must be returned upon request, any reproduction of drawings and related documents in part or in whole is forbidden without the architect's written permission.

detail number key to details
sheet number

SOUTHDOWN BUILDERS LIMITED

OWNER:
SOUTH DOWN BUILDERS LIMITED
2041 Avenue Road
Toronto | Ontario | M5M 4A5

APPLICANT:

Site Plan Application File No.
Town of Oakville - SPA-2022-XXXX

LEGEND

- Existing Tree to Remain
- Proposed Trees
- Existing Tree to be Removed
- Property Line
- Tree Protection Hoarding
- Proposed Evergreen Shrubs
- Proposed Deciduous Shrubs
- 150 mm min compacted depth Topsoil Finegrade & Sod
- Existing Sod
- Ornamental Grasses
- Seeded area
- Mulch
- Perennials
- Concrete Paving
- Bike Ring

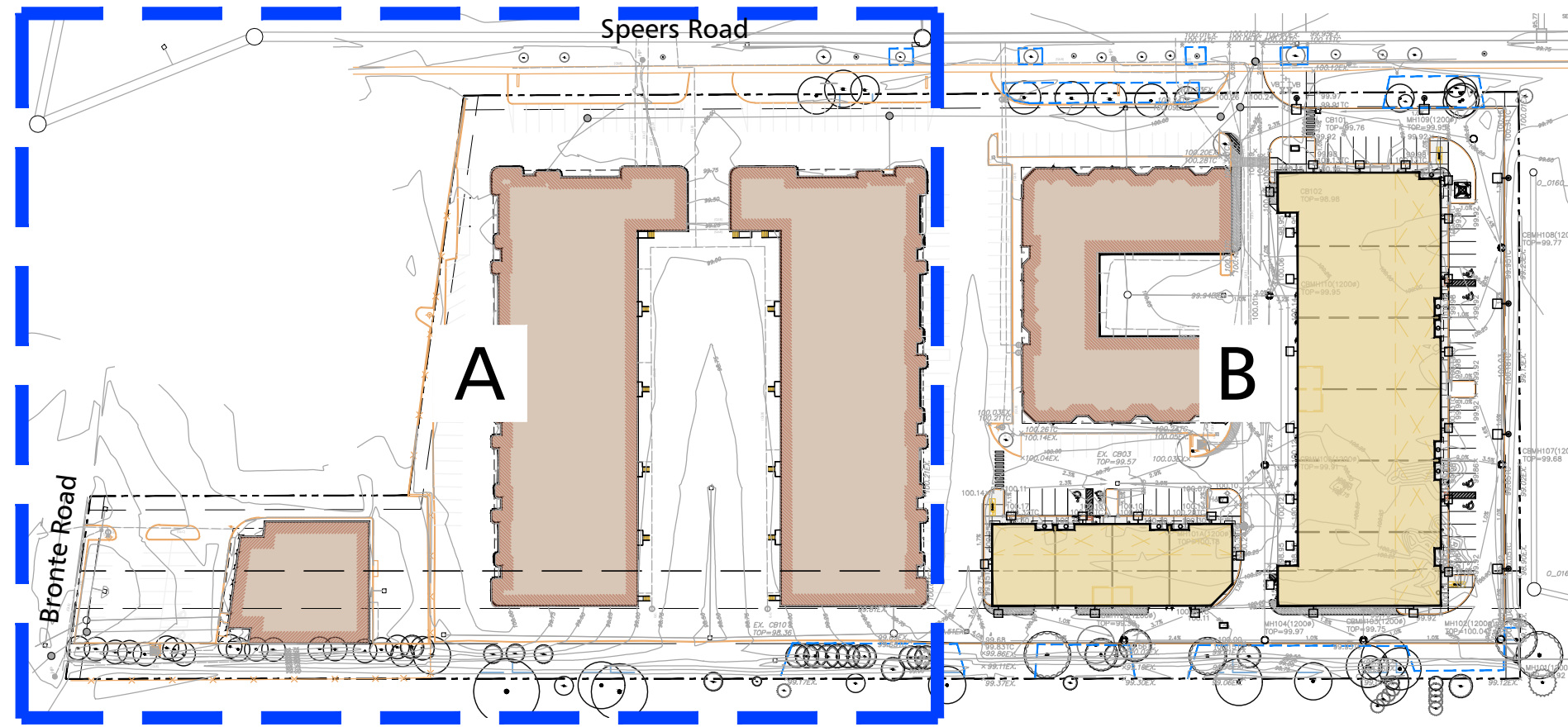
Speers Road Redevelopment
2538, 2530, 2526 Speers Road
Oakville, Ontario

LANDSCAPE PLAN B

Project Number:
21067

Drawn By: AS, JW
Checked By: MT
Date: Jul 22 2022 Issued for Submission
Scale: As Shown
Sheet Number:

L.1



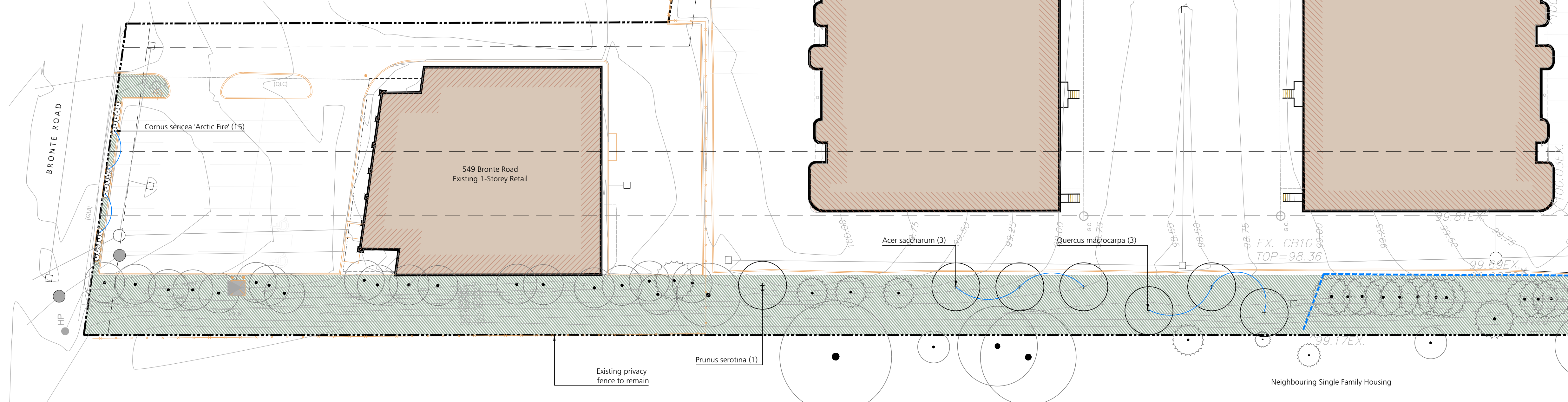
KEY PLAN
N.T.S.

PLANT LIST

Botanical Name	Common Name	Qty.	Cal.	Ht. Spr.	Cond.
TREES					
<i>Acer x freemanii</i>	Freeman Maple	3		60mm	B&B or WB
<i>Acer saccharum</i>	Sugar Maple	6		60mm	B&B or WB
<i>Celtis occidentalis</i>	Common Hackberry	2		60mm	B&B or WB
<i>Gleditsia triacanthos var. inermis 'Skyline'</i>	Skyline Honeylocust	4		60mm	B&B or WB
<i>Prunus serotina</i>	Black Cherry	4		60mm	B&B or WB
<i>Quercus macrocarpa</i>	Burr Oak	5		60mm	B&B or WB
<i>Quercus rubra</i>	Red Oak	11		60mm	B&B or WB
SHRUBS					
<i>Cornus sericea 'Arctic Fire'</i>	Arctic Fire Dogwood	128		60cm ht.	Pot
<i>Juniperus sabina 'Blue Danube'</i>	Blue Danube Juniper	105		60cm ht.	Pot
<i>Physocarpus opulifolius 'Diabolo'</i>	Diabolo Ninebark	52		60cm ht.	Pot
<i>Salix purpurea 'Nana'</i>	Blue Arctic Willow	129		60cm ht.	Pot
<i>Thuja occidentalis 'Holmstrup'</i>	Holmstrup Cedar	8		60cm ht.	Pot
PERENNIALS, GRASSES, AND GROUNDCOVER					
<i>Anemone canadensis</i>	Canada Anemone	107			1 g pot
<i>Calamagrostis acutiflora 'Karl Foerster'</i>	Feather Reed Grass	18			1 g pot
<i>Crocsmia x 'Lucifer'</i>	Monbretia	104			1 g pot
<i>Nepeta faassenii 'Purrsain Blue'</i>	Purrsain Blue Catmint	101			1 g pot
<i>Symphotrichum novae-angliae</i>	New England Aster	100			1 g pot

NOTES:

- Plant material to conform to the Canadian Nursery Trades association metric Guide Specifications for Nursery Stock, latest edition.
- Contractor to verify quantities listed: plant quantities to be supplied as shown in plan in case of discrepancies between plan and quantities listed.
- All plant material to be sourced from nurseries with an 800km radius.
- Provide 2 year warranty for all plant material.



LANDSCAPE PLAN A
1:300



Pearce McCluskey Architects
2203 Durwin Drive • Mississauga, Ontario L5L 1X2
www.pmaarchitects.ca 1.905.607.2444



Landscaping Architecture | Site Design



This drawing is not to be used for construction unless signed by partner in charge.

Contractors must verify all dimensions and be responsible for same. Report any discrepancies to the architect before commencing the work.

Prints are not to be scaled.

All drawings and related documents are the sole copyright property of the architects and must be returned upon request. Any reproduction of drawings and related documents in part or in whole is forbidden without the architects written permission.

detail number key to details
sheet number



OWNER:
SOUTH DOWN BUILDERS LIMITED
2041 Avenue Road
Toronto | Ontario | M5M 4A5

APPLICANT:

Site Plan Application File No.
Town of Oakville - SPA-2022-XXXX

LEGEND

- Existing Tree to Remain
- Proposed Trees
- Existing Tree to be Removed
- Property Line
- Tree Protection Hoarding
- Proposed Evergreen Shrubs
- Proposed Deciduous Shrubs
- 150 mm min compacted depth Topsoil Finegrade & Sod
- Existing Sod
- Ornamental Grasses
- Seeded area
- Mulch
- Perennials
- Concrete Paving
- Bike Ring

Speers Road
Redevelopment

2538, 2530, 2526 Speers Road
Oakville, Ontario

LANDSCAPE
PLAN A

Project Number:

21067

Drawn By: AS, JW
Checked By: MT
Date: Jul 22 2022 Issued for Submission
Scale: As Shown
Sheet Number:

L.2