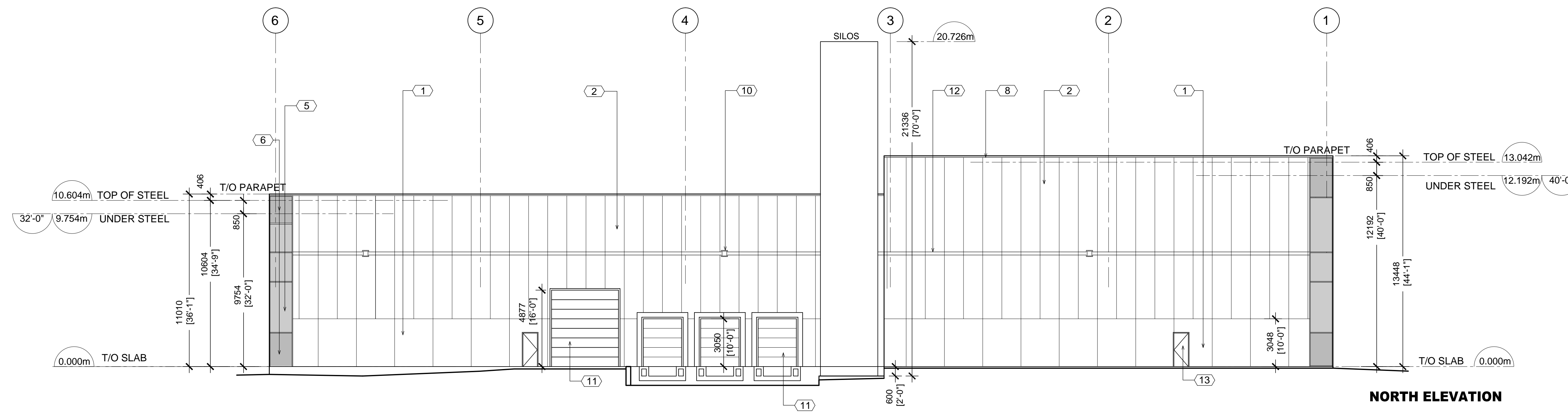


**EAST ELEVATION**



**NORTH ELEVATION**

**EXTERIOR MATERIALS & FINISHES**

|    |  |
|----|--|
| 1  | PRE-CAST CONCRETE PANELS - SMOOTH FINISH - GREY                          |
| 2  | INSULATED METAL PANELS - COLOUR WHITE                                    |
| 3  | ACM ACCENT PANELS - CHARCOAL GREY  |
| 4  | PRE-CAST CONCRETE PANELS - SMOOTH FINISH - WHITE                         |
| 5  | GREY TINTED WINDOWS AND ALUMINUM FRAMES - CHARCOAL GREY                  |
| 6  | GREY TINTED SPANDREL PANELS AND ANODIZED ALUMINUM FRAMES - CHARCOAL GREY |
| 7  | GLASS DOORS IN ANODIZED ALUMINUM FRAMES                                  |
| 8  | PRE-FINISHED METAL FLASHING WHITE  |
| 9  | CANOPY - ACM ACCENT PANEL - CHARCOAL GREY                                |
| 10 | WALL PACK LIGHTING   |
| 11 | OVERHEAD DOOR & FRAME - WHITE  |
| 12 | SMOOTH BAND 200mm  |
| 13 | H.M. DOOR & FRAME WHITE  |

| NO. | ISSUED                     | BY | DATE       |
|-----|----------------------------|----|------------|
| 1.  | FOR PRE-CONSULTATION       | IP | 06.17.2022 |
| 2.  | FOR SPA                    | IP | 11.15.2022 |
| 3.  | FOR S.P.A (2ND SUBMISSION) | IP | 06.01.2023 |

|    |                            |      |            |
|----|----------------------------|------|------------|
| 1. | UPDATED FOR 2ND SUBMISSION | I.P. | 06.01.2023 |
|----|----------------------------|------|------------|

| NO. | REVISED | BY | DATE |
|-----|---------|----|------|
|-----|---------|----|------|

**Cambria Design Build Ltd.**

**CAMBRIA** 1250 Journey's End Circle, Unit #1  
Newmarket, ON L3Y 0B9  
TEL 905-830-6026  
www.cambriadesign.ca

**GLUCK PARTNERSHIP ARCHITECTS INC.**

156 DUNCAN MILL ROAD, SUITE 5  
TORONTO, ONTARIO M3B 3N2  
TEL 416 498 0201

**PREMIER POLY PRODUCTS**

**INDUSTRIAL DEVELOPMENT**

OAKVILLE, ONTARIO

**ELEVATIONS**

|                        |                      |
|------------------------|----------------------|
|                        | DRAWN: I.P.          |
|                        | CHECKED: T.G.        |
|                        | SCALE: 1:150         |
|                        | DATE: APRIL 07, 2022 |
|                        | PROJECT: 2218        |
| DRWG. NO. <b>A-3.0</b> |                      |

**2ND SUBMISSION JUNE 1, 2023**