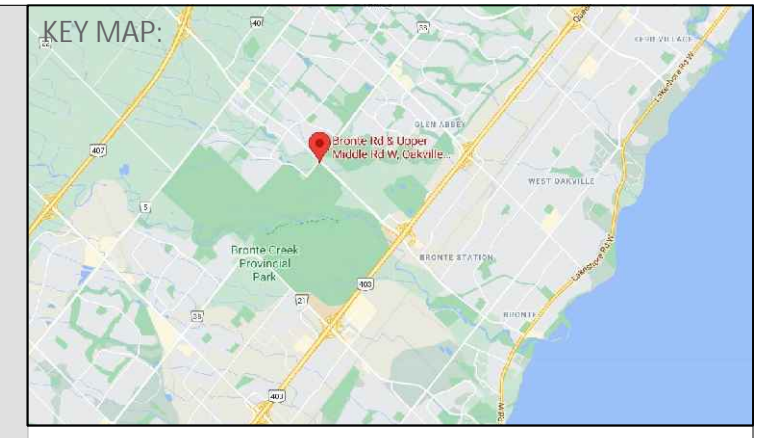


LANDSCAPE PLAN

SAW WHET BLVD.



**LEGEND:**

- Concrete
- Pavers
- Sod
- Street Tree
- Proposed Vegetation
- Proposed Elevation

- Landscape Notes**
- Dimensions are shown in meters unless noted otherwise. Do not scale drawings.
  - Contractor to review layout on site with Landscape Architect prior to commencing work.
  - Contractor to verify grades and identify discrepancies prior to initiating work. Report any changes, discrepancies, or substitutions to the Landscape Architect for review prior to work.
  - It is the contractor's responsibility to locate and verify all existing utilities and services prior to construction.
  - Plant material support systems must be removed by the contractor at time of final acceptance. No extras will be paid to complete this work.
  - Contractor to provide minimum one (1) year warranty from date accepted on all work unless otherwise specified.
  - Grading and servicing shown is for information purposes. For grading and servicing information refer to engineering drawings.
  - For lighting information and power distribution refer to the electrical drawings.
  - Drawings are for construction only if Landscape Architects stamp is signed and dated by the Landscape Architect, and plans are approved by the Municipality.
  - Tree planting within the municipal right-of-way to be undertaken by the Municipality unless noted otherwise.
  - Unless otherwise specified all landscaped areas are to be sodded.
  - Unless otherwise specified, all undeveloped areas shall be undisturbed and kept free and clear of debris.
  - The Owner is to be aware of the Migratory Birds Convention Act, 1994. This Act is implemented by Environment Canada and the Owner is to make every effort to avoid removal of vegetation from the period of March 31st to August 31st.

**STAMP:**

2022-09-31  
NOT FOR CONSTRUCTION

**WHITEHOUSE URBAN DESIGN**  
LANDSCAPE ARCHITECTS & URBAN DESIGNERS

**REVISIONS / SUBMISSIONS**

NO.	DESCRIPTION	DATE:
4	Issued for SPA	2022-03-31
3	Issued for SPA	2021-10-22
2	Issued for SPA	2021-09-20
1	Issued for SPA	2021-05-07

**CLIENT:**  
New Horizon Development Group

**PROJECT TITLE:**  
Ovation @ Encore Inc.

**SHEET TITLE:**  
Landscape Plan

**DWG No. L1**      **DRAWN BY:** AP  
**SHEET No. 1 of 6**      **DESIGN BY:** LWS and AP  
**PROJECT No: 032-21**      **CHECKED BY:** LWS  
**SCALE:** As shown      **NORTH ARROW:**

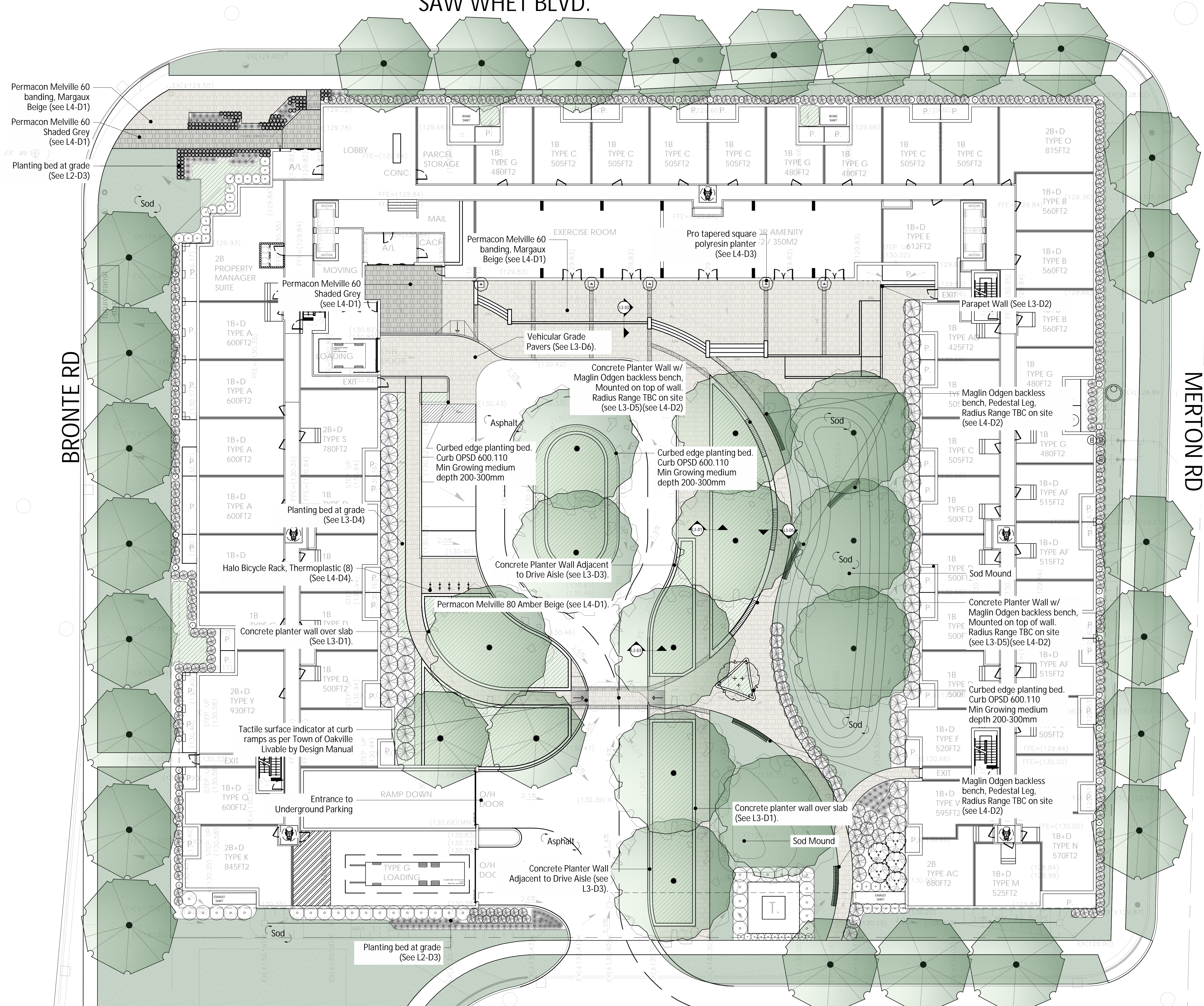
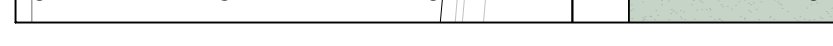
Permacon Melville 60 banding, Margaux Beige (see L4-D1)  
 Permacon Melville 60 Shaded Grey (see L4-D1)  
 Planting bed at grade (see L2-D3)

BRONTE RD

MERTON RD

LITTLEFIELD CRESCENT

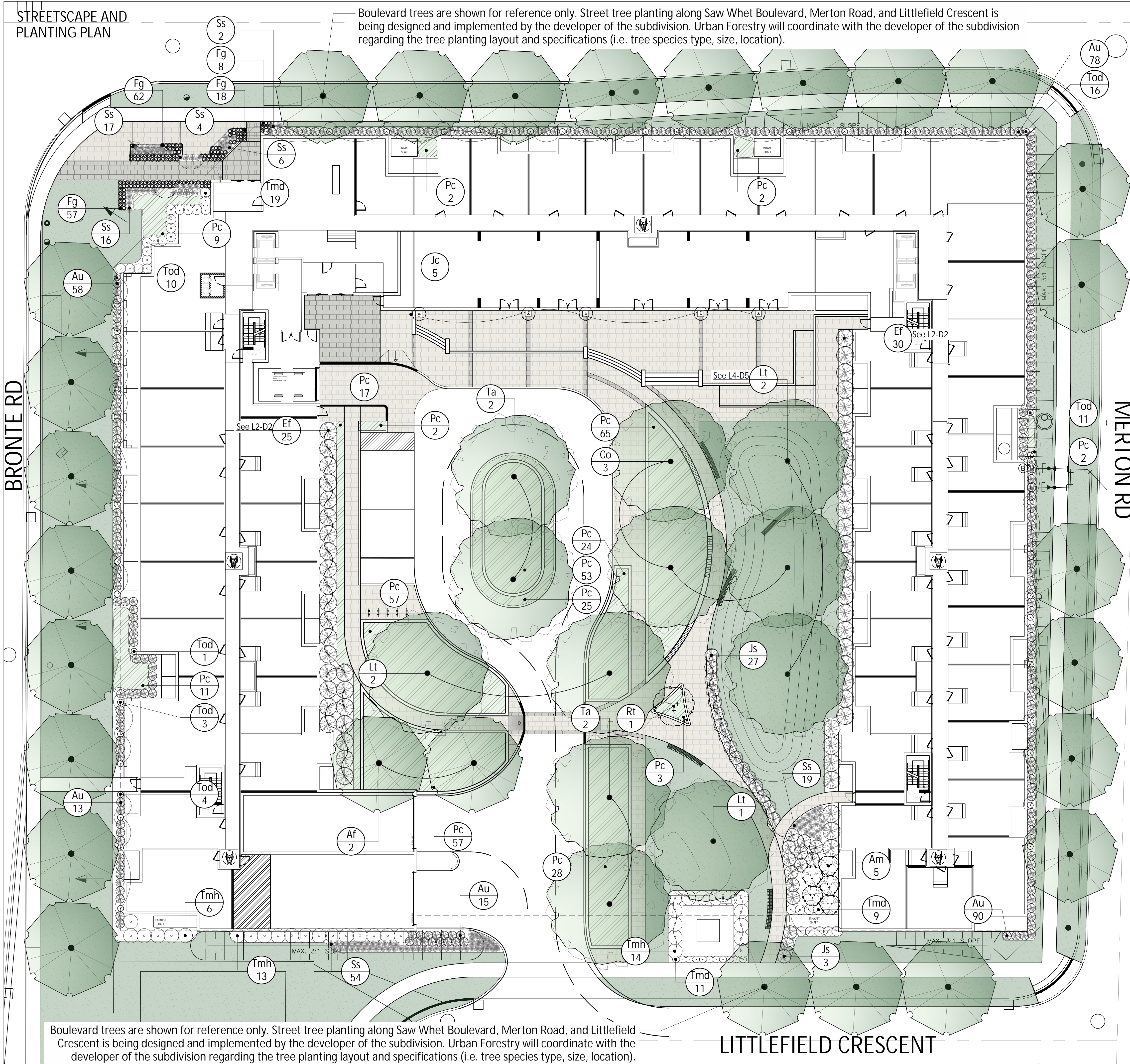
Scale 1:200      Print Size: 24 x 36





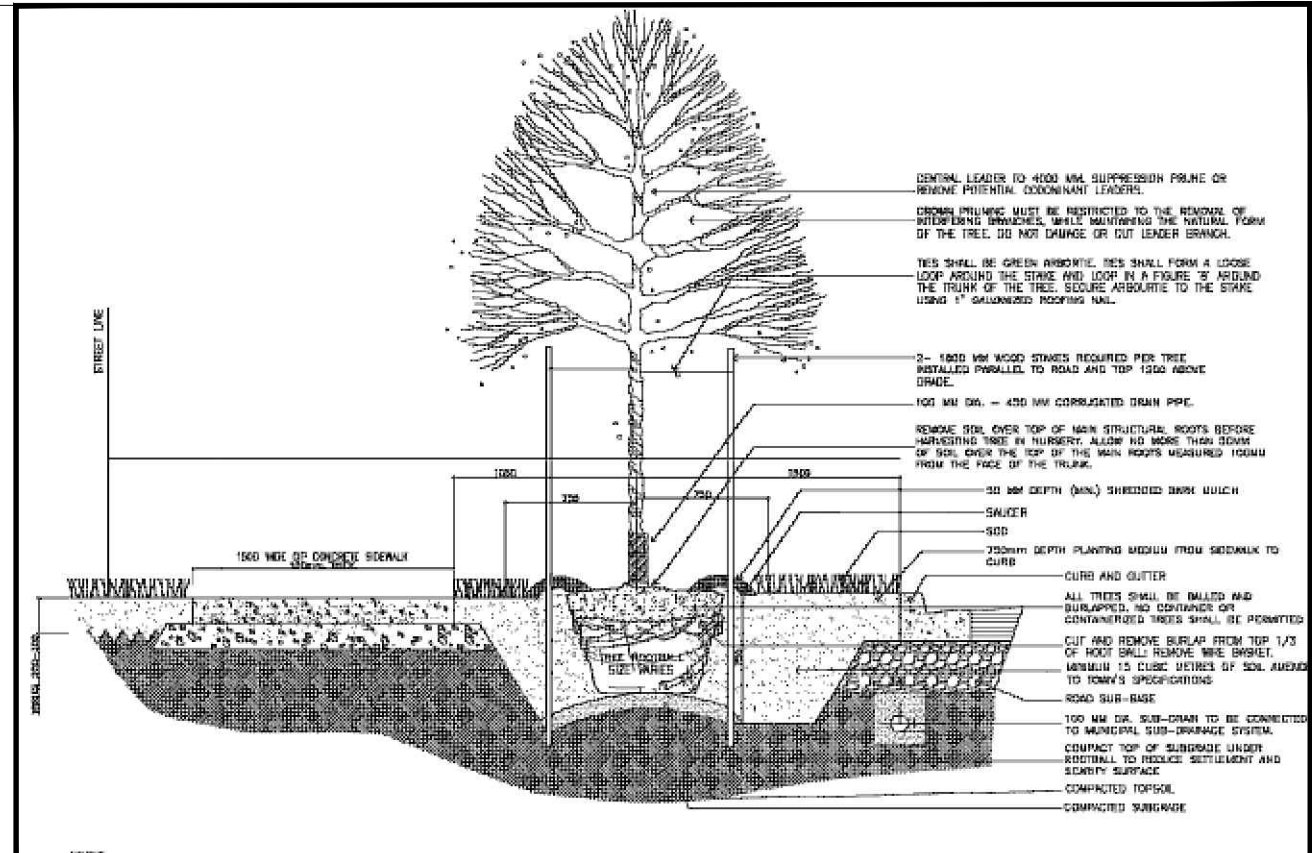
**STREETSCAPE AND PLANTING PLAN**

Boulevard trees are shown for reference only. Street tree planting along Saw Whet Boulevard, Merton Road, and Littlefield Crescent is being designed and implemented by the developer of the subdivision. Urban Forestry will coordinate with the developer of the subdivision regarding the tree planting layout and specifications (i.e. tree species type, size, location).

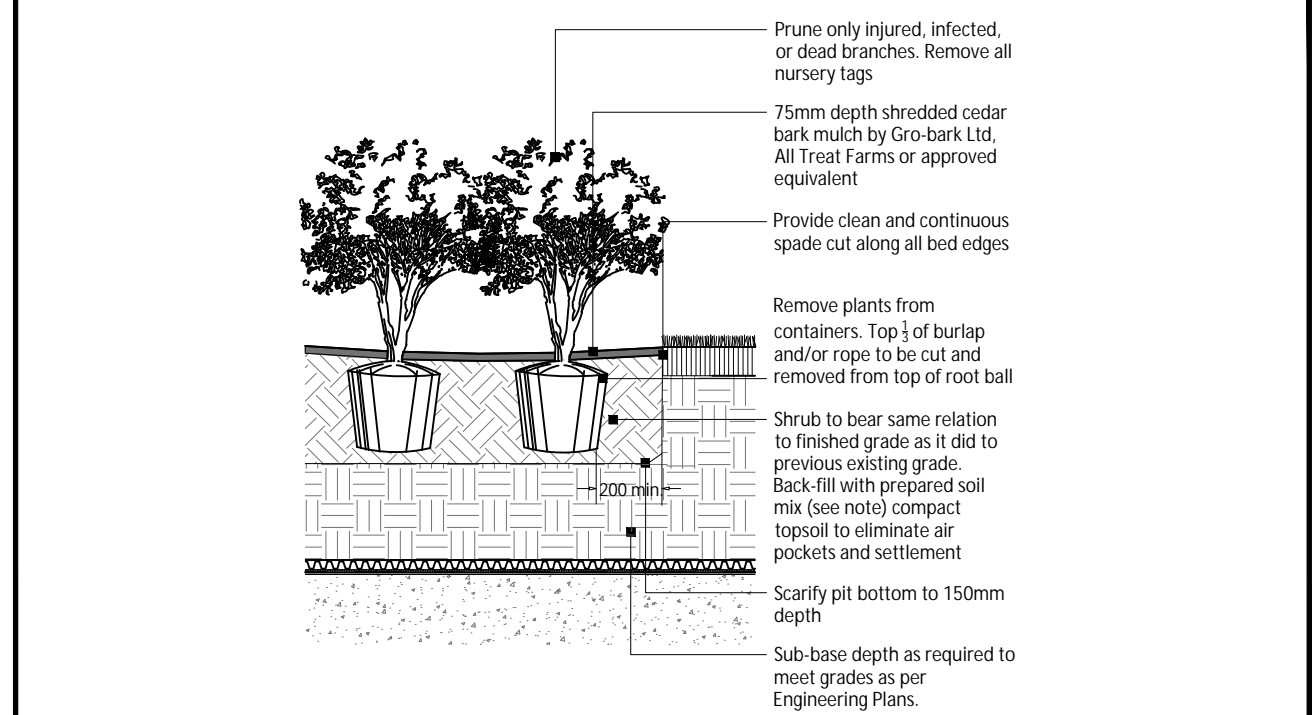


Boulevard trees are shown for reference only. Street tree planting along Saw Whet Boulevard, Merton Road, and Littlefield Crescent is being designed and implemented by the developer of the subdivision. Urban Forestry will coordinate with the developer of the subdivision regarding the tree planting layout and specifications (i.e. tree species type, size, location).

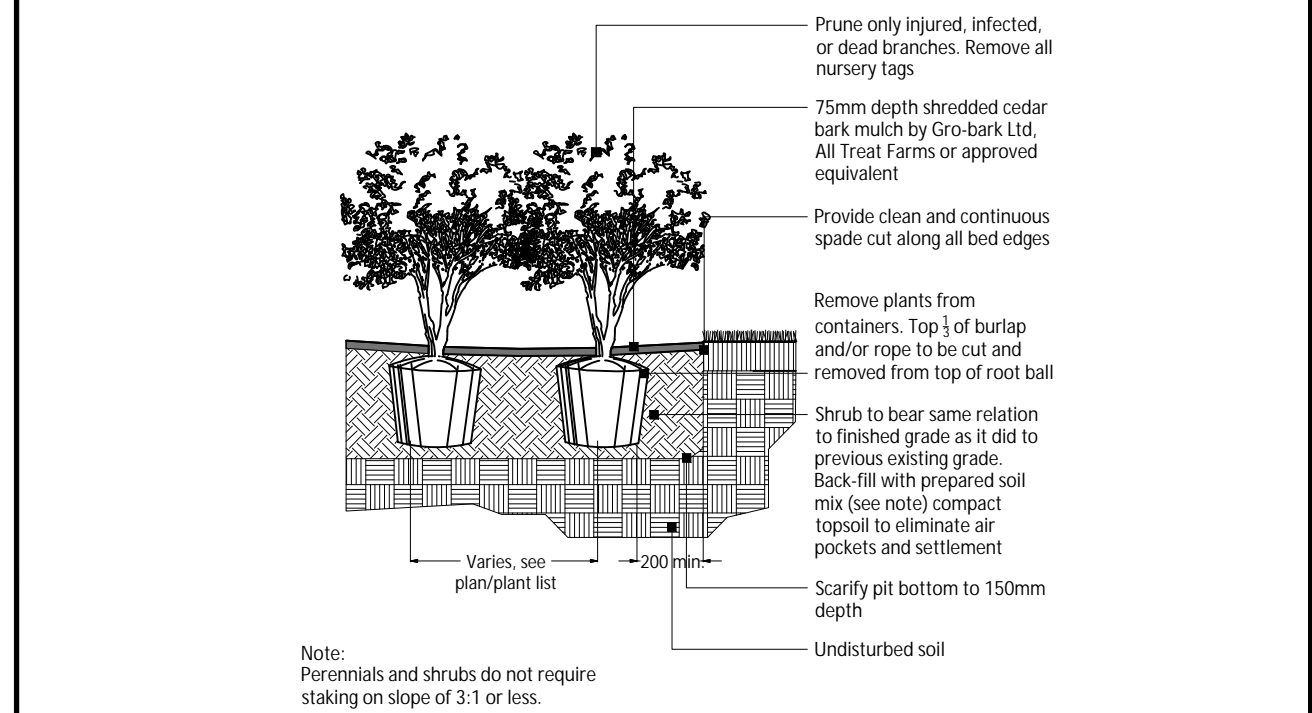
**LITTLEFIELD CRESCENT**



L2-D1 STREET TREE DETAIL - TOWN OF OAKVILLE STANDARD N.T.S.



L2-D2 CONTAINER GROWN SHRUB OVER SLAB N.T.S.

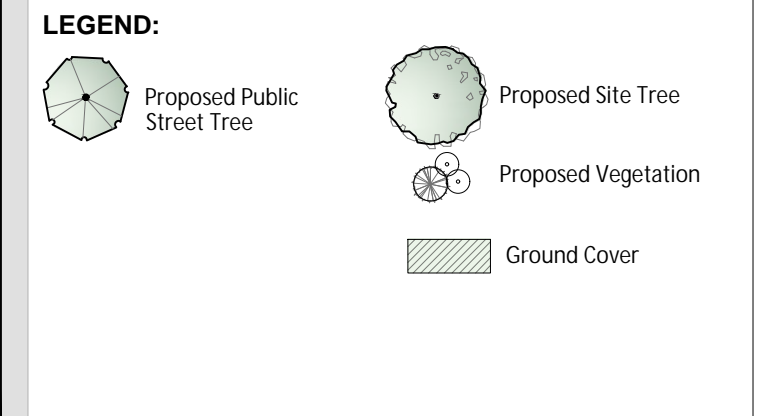
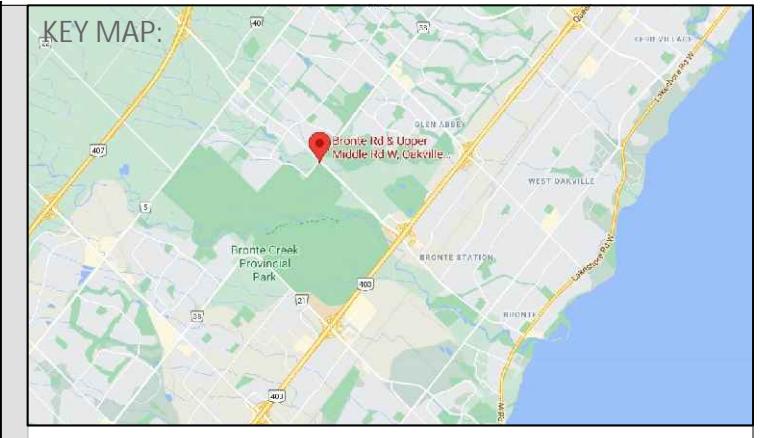


L2-D3 CONTAINER GROWN SHRUB N.T.S.

**Plant List**

Key	Botanical Name	Common Name	Size	Qty	Cond.
<b>Trees - Deciduous</b>					
Lt	<i>Liriodendron tulipifera</i>	Tulip Tree	60mm	5	W.B.
Ta	<i>Tilia americana</i>	Basswood	60mm	4	W.B.
Co	<i>Celtis occidentalis</i>	Common Hackberry	60mm	3	W.B.
Af	<i>Acer x freemanii 'Jeffersred'</i>	Autumn Blaze Maple	60mm	2	W.B.
Rt	<i>Rhus typhina 'Baikage'</i>	Tiger Eyes® Sumac	600mm	1	5 gal
<b>Shrubs - Coniferous</b>					
Tod	<i>Thuja occidentalis 'Degroot's Spire'</i>	Degroot's Spire Arborvitae	175cm	45	8.B.
Js	<i>Juniperus squamata 'Blue Carpet'</i>	Blue Carpet Juniper	40cm	30	3 gal
Co	<i>Celastrus scandens 'Densiformis'</i>	Densiformis Yew	40cm	39	3 gal
Tmh	<i>Taxus x media 'Hilli'</i>	Hill's Yew	40cm	33	3 gal
Jc	<i>Juniperus communis 'Gold Cone'</i>	Gold Cone Juniper	30cm	5	2 gal
<b>Ornamental Grass</b>					
Ss	<i>Schizachyrium scaparium</i>	Little Bluestem	15cm	118	1 gal
Fg	<i>Festuca glauca</i>	Beyond Blue Fescue	15cm	145	1 gal
<b>Broadleaf Evergreens</b>					
Ef	<i>Euonymus fortunei 'Emerald Gaiety'</i>	Emerald Gaiety Wintercreeper	30cm	55	2 gal
Au	<i>Arctostaphylos uva-ursi 'Massachusetts'</i>	Massachusetts Bearberry	20cm	254	1 gal
<b>Shrubs</b>					
Am	<i>Aronia melanocarpa 'Autumn Magic'</i>	Autumn Magic Black Chokeberry	30cm	5	1 gal
<b>Perennials</b>					
Pc	<i>Paxistima canbyi</i>	Mountain Lover	80-100 pcs	357	FLAT

Scale 1:200 Print Size: 24 x 36



- Landscape Notes**
- Dimensions are shown in meters unless noted otherwise. Do not scale drawings.
  - Contractor to review layout on site with Landscape Architect prior to commencing work.
  - Contractor to verify grades and identify discrepancies prior to initiating work. Report any changes, discrepancies, or substitutions to the Landscape Architect for review prior to work.
  - It is the contractor's responsibility to locate and verify all existing utilities and services prior to construction.
  - Plant material support systems must be removed by the contractor at time of final acceptance. No extras will be paid to complete this work.
  - Contractor to provide minimum one (1) year warranty from date accepted on all work unless otherwise specified.
  - Grading and servicing shown is for information purposes. For grading and servicing information refer to engineering drawings.
  - For lighting information and power distribution refer to the electrical drawings.
  - Drawings are for construction only if Landscape Architects stamp is signed and dated by the Landscape Architect, and plans are approved by the Municipality.
  - Tree planting within the municipal right-of-way to be undertaken by the Municipality unless noted otherwise.
  - Unless otherwise specified all landscaped areas are to be sodded.
  - Unless otherwise specified, all undeveloped areas shall be undisturbed and kept free and clear of debris.
  - The Owner is to be aware of the Migratory Birds Convention Act, 1994. This Act is implemented by Environment Canada and the Owner is to make every effort to avoid removal of vegetation from the period of March 31st to August 31st.



**REVISIONS / SUBMISSIONS**

NO.	DESCRIPTION	DATE:
4	Issued for SPA	2022-03-31
3	Issued for SPA	2021-10-22
2	Issued for SPA	2021-09-20
1	Issued for SPA	2021-05-07

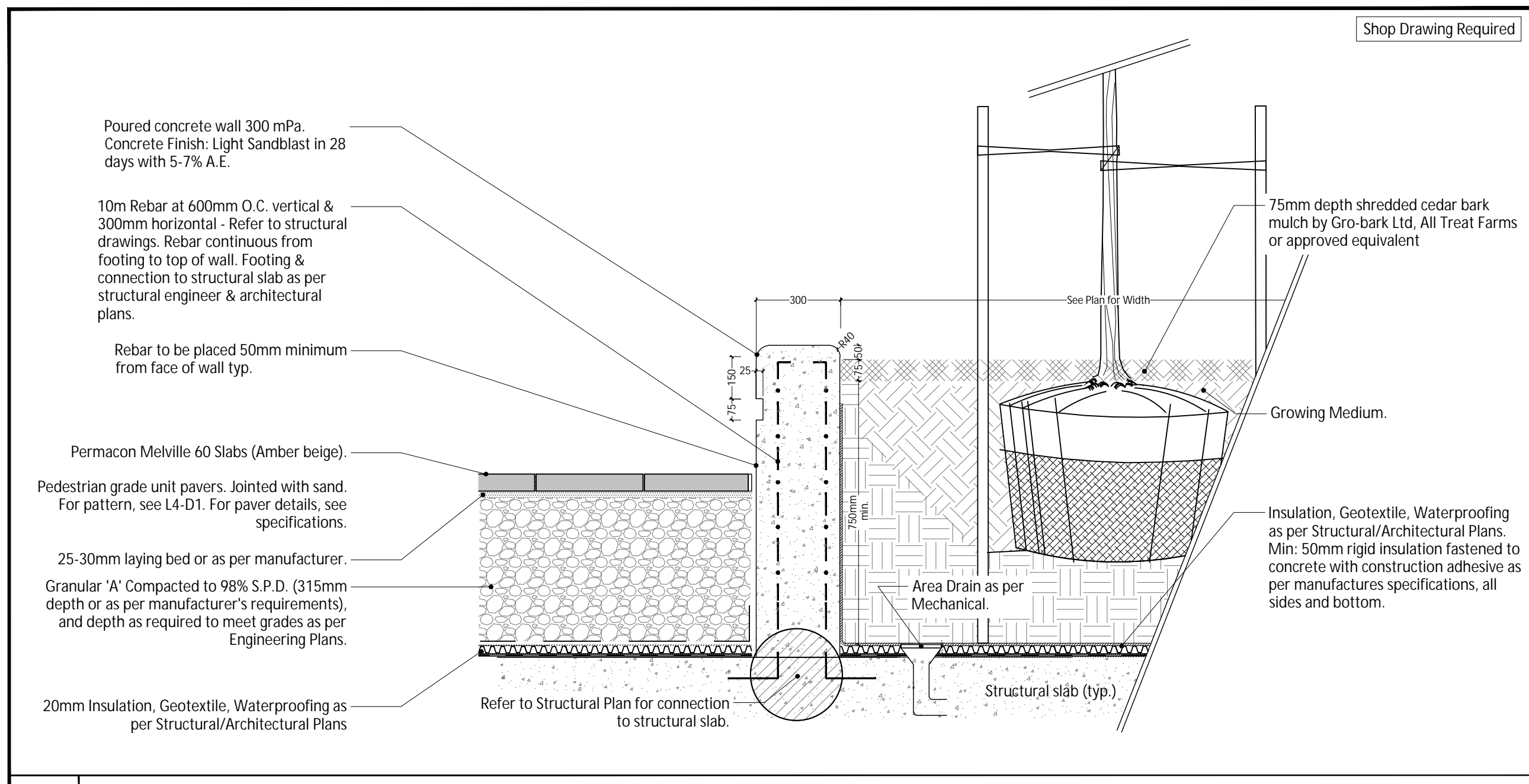
**CLIENT:** New Horizon Development Group

**PROJECT TITLE:** Ovation @ Encore Inc.

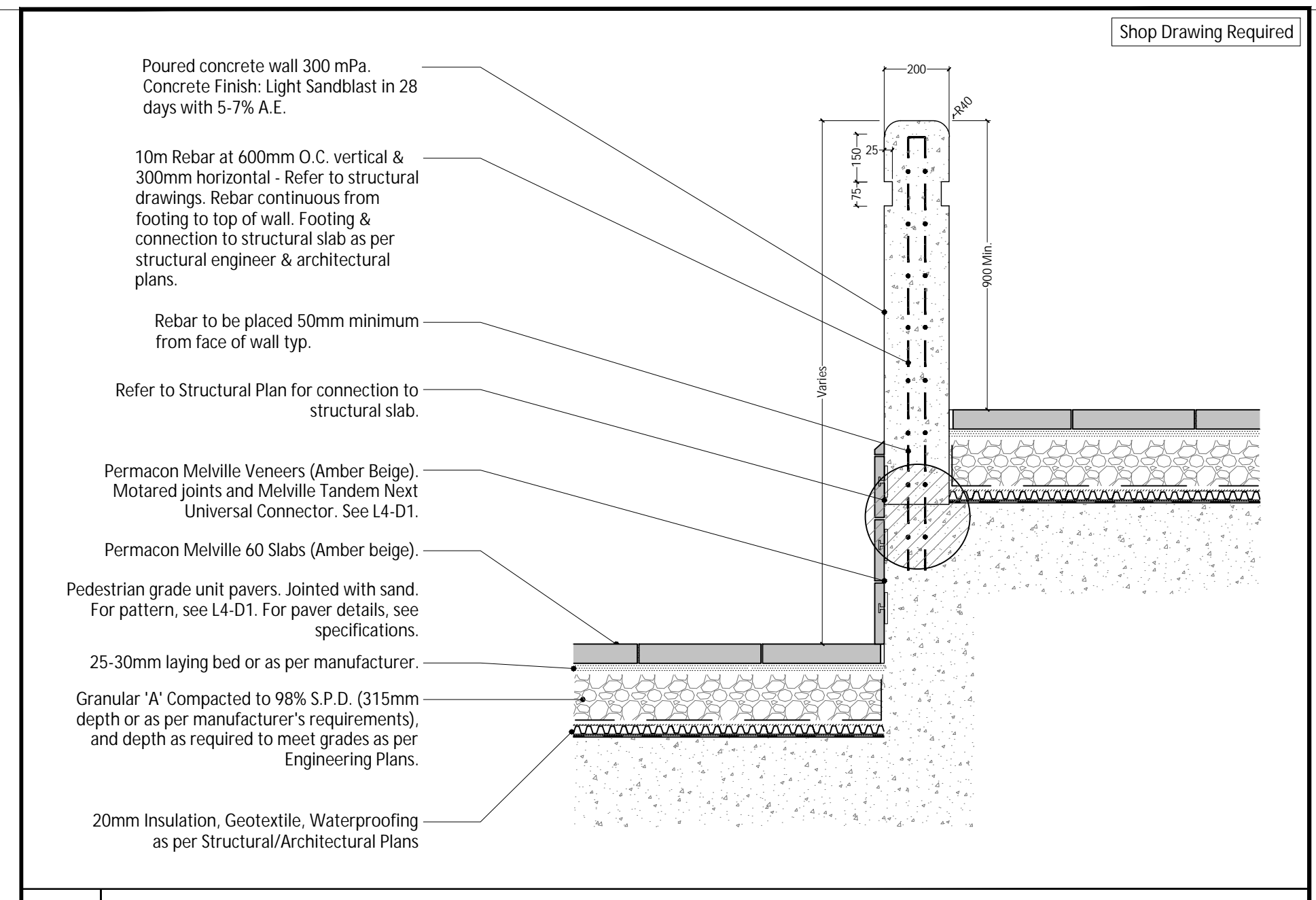
**SHEET TITLE:** Streetscape and Planting Plan

**DWG No. L2** DRAWN BY: AP  
**SHEET No. 2 of 6** DESIGN BY: LWS and AP  
**PROJECT No: 032-21** CHECKED BY: LWS  
**SCALE:** As shown **NORTH ARROW:**

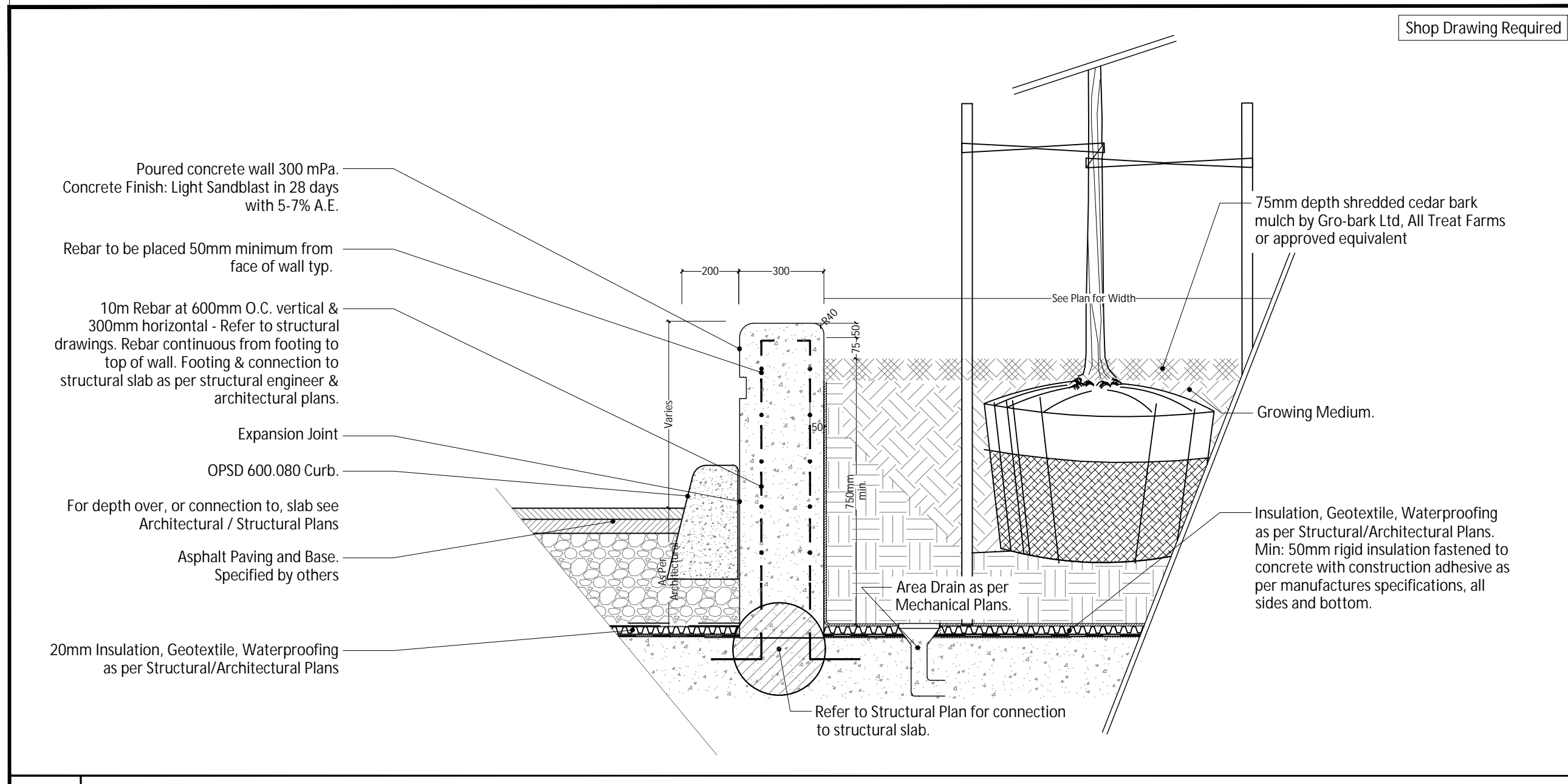




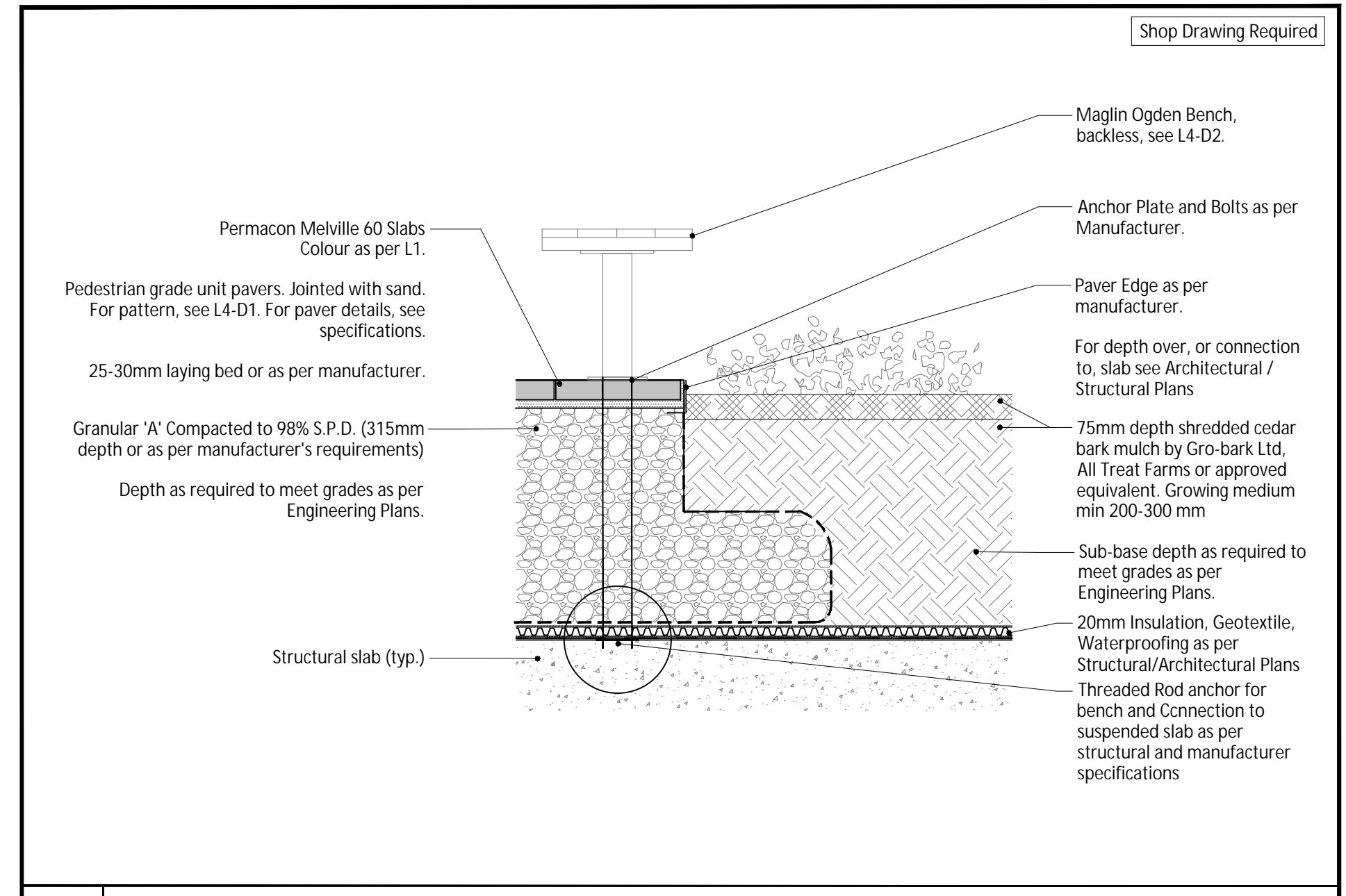
L3-D1 CONCRETE PLANTER WALL OVER SLAB N.T.S.



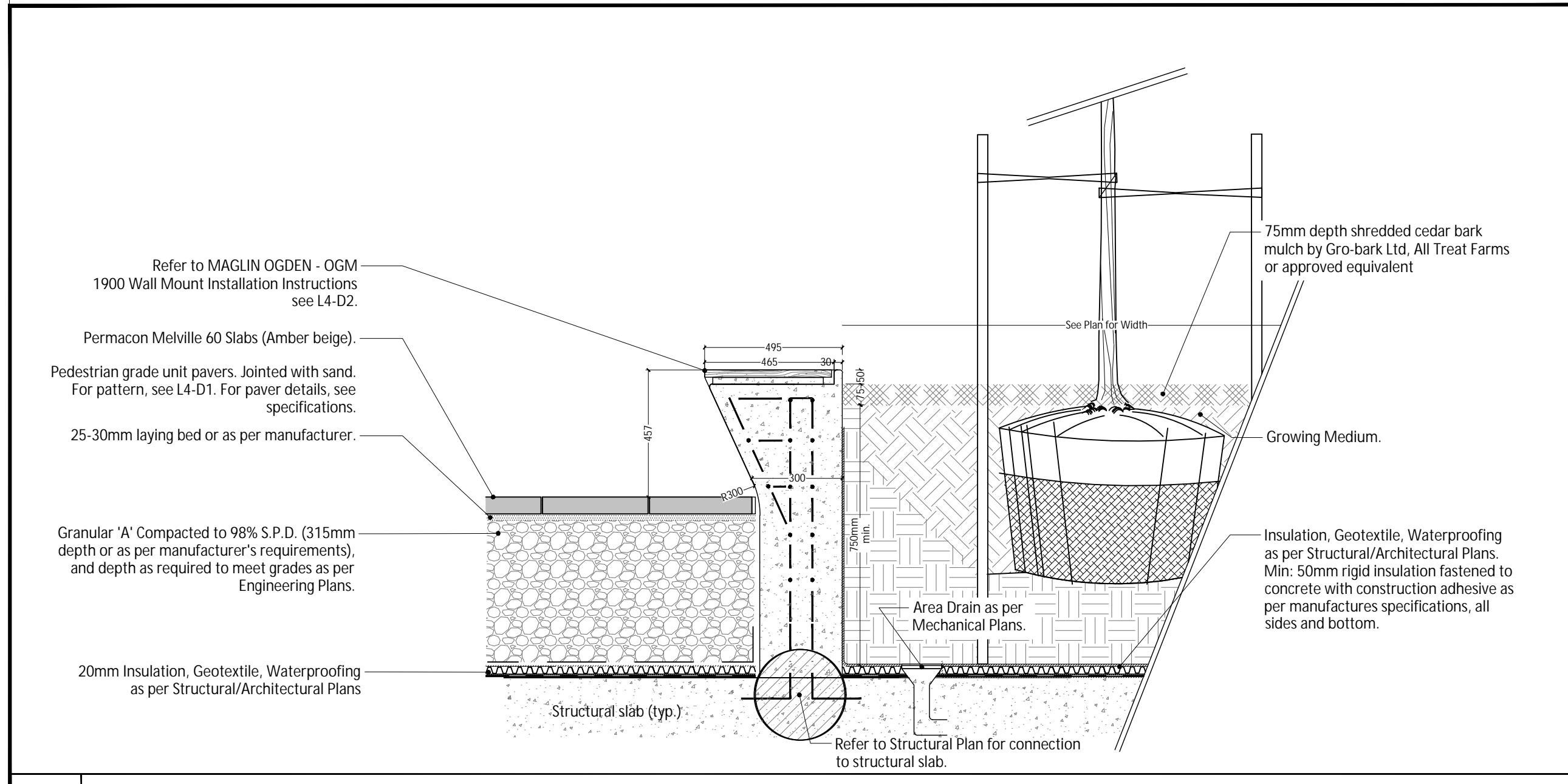
L3-D2 PARAPET WALL N.T.S.



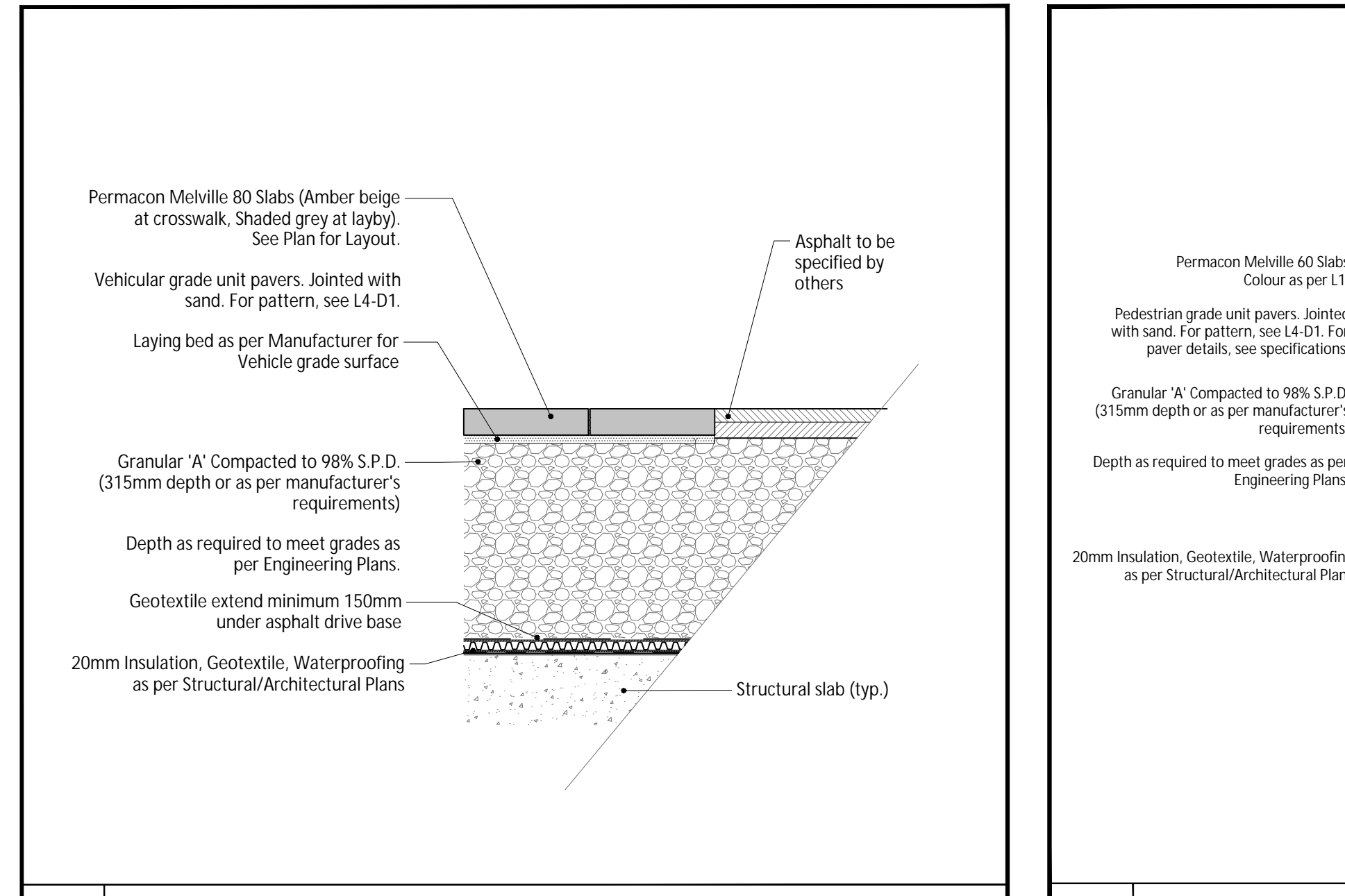
L3-D3 RAISED PLANTERS ADJACENT TO DRIVE AISLE N.T.S.



L3-D4 PLANTER AT GRADE OVER SLAB N.T.S.



L3-D5 RAISED PLANTER/SEATWALL N.T.S.



L3-D6 UNIT PAVERS FLUSH WITH ASPHALT OVER SLAB N.T.S.

**LANDSCAPE SPECIFICATIONS**

CONTRACTOR MUST CONTACT ALL UTILITY COMPANIES FOR STAKE OUTS PRIOR TO ANY EXCAVATION OR PLANTING.

**ROUGH GRADING**  
ROUGH GRADE AND FILL AREAS TO ESTABLISH SUBGRADE AS REQUIRED. PROVIDE DRAINAGE PATTERN AS INDICATED ON DRAWINGS.

ROUND SMOOTHLY ALL TOPS AND TOES OF SLOPES. COMPACT ALL AREAS TO 95% STANDARD PROCTOR DENSITY UNLESS SPECIFIED OTHERWISE. EXISTING TREES TO REMAIN ON SITE ARE TO BE PROTECTED AS DETAILED.

**FINE GRADING**  
FINE GRADE ALL AREAS TO FINISHED GRADES AS SHOWN ON LAYOUT OR GRADING PLAN OR ARCHITECT'S SITE PLAN. PROVIDE UNIFORM SLOPES AWAY FROM THE BUILDING, UNLESS SPECIFIED OTHERWISE. SLOPES MAY NOT EXCEED 3:1 (3% G.S.).

**SPREADING OF TOPSOIL**  
SCARIFY THE SUBSOIL PRIOR TO THE SPREADING OF THE TOPSOIL. REMOVE ALL DEBRIS AND LEAVE A FINE-TEXTURED EVEN SURFACE.

ALL TOPSOIL TO BE IMPORTED UNLESS PREVIOUSLY APPROVED BY LANDSCAPE ARCHITECT. OBTAIN APPROVAL FOR THE QUALITY OF ANY IMPORTED TOPSOIL BEFORE DELIVERY TO THE SITE. TOPSOIL IS TO BE COMPACTED TO CREATE A FIRM AND EVEN SURFACE.

**SOD**  
USE NO. 1 GRADE TURFGRASS NURSERY SOD WHICH CONFORMS WITH THE SPECIFICATIONS OF THE NURSERY SOD GROWERS ASSOCIATION OF ONTARIO. ALL LAWN AREAS SHALL RECEIVE A MINIMUM OF 100MM (4") OF COMPACTED TOPSOIL, AND SHALL BE SODDED WITH #1 KENTUCKY BLUEGRASS - FESCUE. NO SOD SLOPES ARE TO EXCEED 3:1. SLOPE IN EXCESS OF 4:1 TO BE REGGED.

**MINERAL FERTILIZER**  
APPLY THE FOLLOWING MINERAL FERTILIZER UNLESS SOILS TESTS SHOW OTHER REQUIREMENTS:  
1. SODDED AREAS - 11% NITROGEN, 8% PHOSPHORUS AND 4% POTASH (11-8-4) AT THE RATE OF 4.5 KG OVER M2 (10 LBS OVER 1000 SQ. FT.)  
2. PLANTING BEDS - 7% NITROGEN, 8% PHOSPHORUS AND 7% POTASH (7-7-7) AT THE RATE OF 40 GRAMS (4 OZ.) FOR EVERY BUSHEL OF TOPSOIL.

**PREPARATION OF PLANTING BEDS**  
ALL PLANT BEDS TO BE CONTINUOUS. EXCAVATE ALL PLANTING BEDS TO THE DEPTH AS INDICATED ON THE DRAWINGS AND DETAILS. MIN 450mm (18"). BACKFILL ALL PLANTING BEDS WITH A SOIL MIXTURE CONSISTING OF SIX (6) PARTS OF SAND (LAWN ONE (1) PART OF FINELY PULVERIZED PEAT MOSS, TWO (2) PARTS OF WELL-ROTTED MANURE AND THE MINERAL FERTILIZER AS SPECIFIED ABOVE. ALSO ADD 58 KILOS BONE MEAL/CUBIC METER OF PLANTING SOIL (1 LB./CUBIC YARD). PREPARE THE PLANTING BEDS FOR PLANTING BEFORE THE DELIVERY OF THE PLANT MATERIAL TO THE JOB SITE.

**NOTE:** IF THE EXISTING SOIL CONDITIONS ARE CLAY OR WET IN NATURE, CONTACT THE LANDSCAPE ARCHITECT FOR INSTRUCTIONS OF A SUITABLE SOIL MIXTURE. FAILURE TO DO THIS MAY RESULT IN DELAY OF APPROVAL AND ACCEPTANCE.

**PLANT MATERIALS**  
ALL PLANT MATERIAL SHALL CONFORM TO THE STANDARDS OF THE CANADIAN NURSERY TRADES ASSOCIATION FOR SIZE AND SPECIES.

ALL SHRUB AND TREE MATERIAL SHALL BE CONTAINER GROWN, POTTED, S/B OR B/B, UNLESS OTHERWISE NOTED. BARE ROOT PLANTING SHALL BE ACCEPTABLE FOR CERTAIN SPECIES DURING EARLY SPRING OR LATE FALL PLANTING SEASON. CONTRACTOR SHALL MAKE REQUESTS FOR ROOT CONDITION SUBSTITUTION IN WRITING TO THE LANDSCAPE ARCHITECT PRIOR TO COMMENCEMENT OF PLANTING OPERATIONS. ALL PLANT MATERIAL TO BE CLAY GROWN STOCK UNLESS OTHERWISE NOTED.

**PLANT MATERIAL INSTALLATION**  
ALL TREES, SHRUBS AND GROUNDCOVERS SHALL BE PLANTED AS DETAILED & AS SHOWN ON THE PLANTING PLAN. ALL BEDS TO RECEIVE A COVER OF CLEAN MULCH TO A DEPTH OF 75mm (3"). FOR GIVING AND STAKING TREES, REFER TO PLANTING DETAILS. WRAP ALL DECIDUOUS TREES UNDER EXPERIENCED SUPERVISION ONLY TO THE SPECIFICATIONS OF THE ONTARIO LANDSCAPE CONTRACTORS' ASSOCIATION.

PLANT MATERIAL SIZES AND CONDITIONS ARE TO BE AS INDICATED ON THE LANDSCAPE DRAWING.

THE INDIVIDUAL PLANT GROUPING TOTAL AS ILLUSTRATED ON THE PLANTING PLAN SUPERSEDES THE ESTIMATED QUANTITY ON THE MASTER PLANT LIST. CONTRACTOR MUST REPORT ANY DISCREPANCIES TO THE LANDSCAPE ARCHITECT IN WRITING BEFORE COMMENCING ANY WORK. CONTRACTOR WILL ASSUME FULL RESPONSIBILITY IF LANDSCAPE ARCHITECT IS NOT NOTIFIED OF DISCREPANCIES.

\* MULCH - SHREDDED PINE MULCH BY "GRO BARK" OR APPROVED EQUAL. LANDSCAPE ARCHITECT TO APPROVE MULCH BEFORE INSTALLATION.

**GENERAL MAINTENANCE**  
PROPER MAINTENANCE PROCEDURES ARE TO BE FULLY ADMINISTERED FOR ALL NEWLY CONSTRUCTED LANDSCAPE WORK, IN ACCORDANCE WITH LANDSCAPE ONTARIO SPECIFICATIONS (SECTION 1E - MAINTENANCE WORK). THIS SHALL APPLY ONLY DURING THE CONSTRUCTION PERIOD, UNLESS OTHERWISE SPECIFIED. CONTRACTOR IS RESPONSIBLE FOR MAINTENANCE OF SOD AND PLANTING UNTIL FINAL ACCEPTANCE BY LANDSCAPE ARCHITECT.

**RODENT PROTECTION**  
THE CONTRACTOR SHALL BE RESPONSIBLE FOR THE PROTECTION OF ALL TREES AND SHRUBS FOR WINTER PROTECTION AND FROM RODENT INJURY FOR THE DURATION OF GUARANTEE PERIOD. PROTECTIVE GUARDS SHALL BE EMPLOYED AROUND ALL DECIDUOUS TREES. GUARDS TO BE 150MM DIA. PVC PIPE OR AS MUNICIPAL GUIDELINES. GUARDS SHALL BE INSTALLED PRIOR TO THE APPLICATION OF THE MULCH AND SHOULD BE PLACED A MINIMUM OF 50MM (2") OUT FROM THE TREE TRUNK ON ALL SIDES.

ALL SHRUBS AND CONIFEROUS TREES SHALL HAVE AN APPLICATION OF "SKOOT" OR APPROVED EQUIVALENT RODENT FORMULA, TO BE APPLIED AT THE END OF OCTOBER. FOLLOW MANUFACTURER'S DIRECTIONS FOR APPLICATION.

**GENERAL REQUIREMENTS**  
USE ABOVE SPECIFICATIONS IN CONJUNCTION WITH THE GENERAL LANDSCAPE SPECIFICATIONS OF THE ONTARIO LANDSCAPE CONTRACTORS' ASSOCIATION, THE NURSERY SOD GROWERS' ASSOCIATION OF ONTARIO AND WITH THE GUIDE SPECIFICATIONS FOR NURSERY STOCK OF THE CANADIAN NURSERY TRADES ASSOCIATION. USE ONLY PLANT MATERIAL TRUE TO NAME, SIZE AND GRADE AS SPECIFIED ON PLANTING PLAN. PROVIDE SUFFICIENT LABELS OR MARKINGS TO INDICATE CLEARLY THE VARIETY, SIZE AND GRADE OF EACH SPECIMEN OR BUNDLE.

OBTAIN APPROVAL FOR SUBSTITUTIONS AS TO VARIETY, SIZE OR GRADE FROM THE LANDSCAPE ARCHITECT. USE ONLY NURSERY STOCK GROWN UNDER PROPER HORTICULTURAL PRACTICES, VIABLE, FREE FROM PEST AND DISEASE AND UNDAMAGED.

CHECK LOCATIONS AND OBTAIN STAKEOUTS OF ALL UTILITY LINES BEFORE EXCAVATION. OBTAIN ALL NECESSARY PERMITS BEFORE COMMENCEMENT OF CONSTRUCTION.

REPORT IN WRITING ANY DISCREPANCIES IN THE DRAWINGS, SPECIFICATIONS AND CONTRACT DOCUMENTS TO THE LANDSCAPE ARCHITECT BEFORE THE END OF THE BIDDING PROCESS AND COMMENCEMENT OF CONSTRUCTION.

THESE SPECIFICATIONS MAY BE SUPERSEDED BY ADDITIONAL SPECIFICATIONS SET OUT IN THE TENDER DOCUMENTS. CONTRACTOR TO REVIEW ALL DOCUMENTS.

**GUARANTEE PERIOD**  
PROVIDE ONE FULL YEAR GUARANTEE ON ALL LANDSCAPE WORK FROM DATE OF FINAL ACCEPTANCE BY LANDSCAPE ARCHITECT.

GUARANTEE PERIOD MAY BE EXTENDED TO TWO FULL YEARS DEPENDING ON MUNICIPAL STANDARDS. CONTRACTOR TO VERIFY WITH OWNER AND LANDSCAPE ARCHITECT.



**LEGEND:**

**Landscape Notes**

- Dimensions are shown in meters unless noted otherwise. Do not scale drawings.
- Contractor to review layout on site with Landscape Architect prior to commencing work.
- Contractor to verify grades and identify discrepancies prior to initiating work. Report any changes, discrepancies, or substitutions to the Landscape Architect for review prior to work.
- It is the contractor's responsibility to locate and verify all existing utilities and services prior to construction.
- Plant material support systems must be removed by the contractor at time of final acceptance. No extras will be paid to complete this work.
- Contractor to provide minimum one (1) year warranty from date accepted on all work unless otherwise specified.
- Grading and servicing shown is for information purposes. For grading and servicing information refer to engineering drawings.
- For lighting information and power distribution refer to the electrical drawings.
- Drawings are for construction only if Landscape Architects stamp is signed and dated by the Landscape Architect, and plans are approved by the Municipality.
- Tree planting within the municipal right-of-way to be undertaken by the Municipality unless noted otherwise.
- Unless otherwise specified all landscaped areas are to be sodded.
- Unless otherwise specified, all undeveloped areas shall be undisturbed and kept free and clear of debris.
- The Owner is to be aware of the Migratory Birds Convention Act, 1994. This Act is implemented by Environment Canada and the Owner is to make every effort to avoid removal of vegetation from the period of March 31st to August 31st.

**STAMP:**

**WHITEHOUSE URBAN DESIGN**  
LANDSCAPE ARCHITECTS & URBAN DESIGNERS

**REVISIONS / SUBMISSIONS**

NO.	DESCRIPTION	DATE:
4	Issued for SPA	2022-03-31
3	Issued for SPA	2021-10-22
2	Issued for SPA	2021-09-20
1	Issued for SPA	2021-05-07

**CLIENT:** New Horizon Development Group

**PROJECT TITLE:** Ovation @ Encore Inc.

**SHEET TITLE:** Details

**DWG No. L3** DRAWN BY: AP  
**SHEET No. 3 of 6** DESIGN BY: LWS and AP  
**PROJECT No: 032-21** CHECKED BY: LWS  
**SCALE:** As shown **NORTH ARROW:**



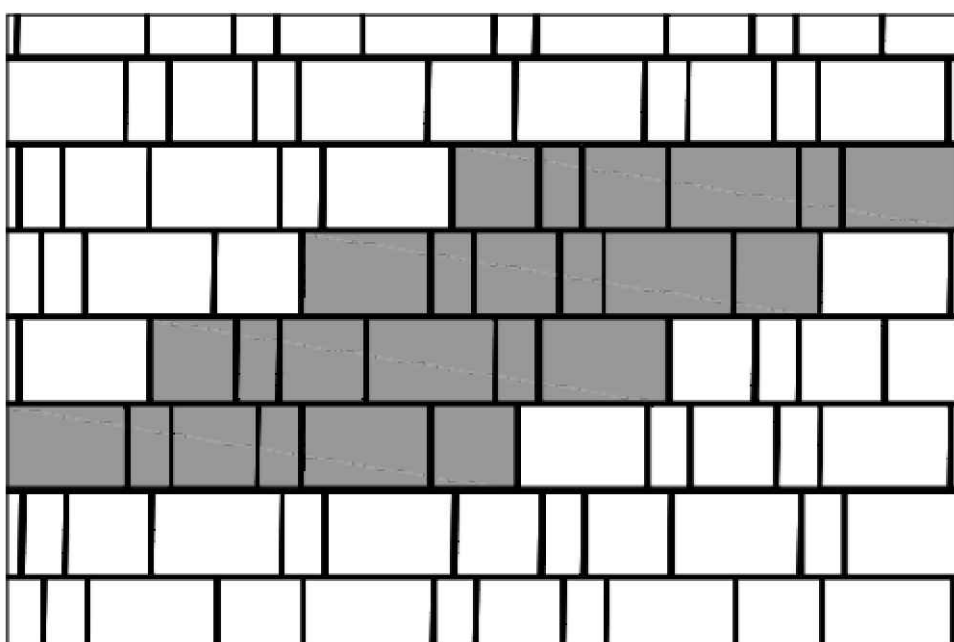
**Melville® 60 Slabs**

	Dimensions (mm)	Dimensions (in)
A	60 x 190 x 380	2 3/8 x 7 1/2 x 15
B	60 x 380 x 380	2 3/8 x 15 x 15
C	60 x 380 x 570	2 3/8 x 15 x 22 7/16
Weight/unit (avg.)	20 kg	44 lb
Area/unit (avg.)	0.14 m <sup>2</sup>	1.55 ft <sup>2</sup>
Area/layer	0.87 m <sup>2</sup>	9.33 ft <sup>2</sup>
Area/cube	10.44 m <sup>2</sup>	111.96 ft <sup>2</sup>
Qty/cube	A = 24 B = 24 C = 24	
Weight/cube	1465 kg	3225 lb

**Melville® 80 Pavers**

	Dimensions (mm)	Dimensions (in)
A	80 x 190 x 380	3 1/8 x 7 1/2 x 15
B	80 x 380 x 380	3 1/8 x 15 x 15
C	80 x 380 x 570	3 1/8 x 15 x 22 7/16
Weight/unit (avg.)	27 kg	60 lb
Units/area (avg.)	6.93 units/m <sup>2</sup>	0.65 units/ft <sup>2</sup>
Area/layer	0.87 m <sup>2</sup>	9.33 ft <sup>2</sup>
Area/cube	7.83 m <sup>2</sup>	83.97 ft <sup>2</sup>
Qty/cube	A = 18 B = 18 C = 18	
Length/layer (1)	2.28 lin. m	7.48 lin. ft
Length/cube (1)	20.52 lin. m	67.32 lin. ft
Weight/cube	1463 kg	3225 lb

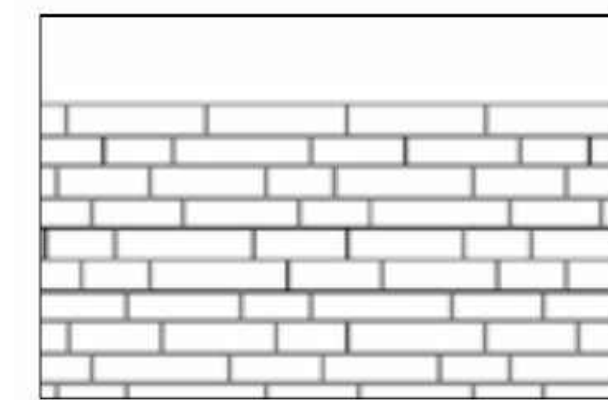
(1) Soldier course



**Melville® Tandem® Wall – 90 mm Veneer Units**

	Dimensions (mm)	Dimensions (in)
A	90 x 67 x 201	3 9/16 x 2 5/8 x 7 7/8
B	90 x 67 x 268	3 9/16 x 2 5/8 x 10 1/2
C	90 x 67 x 335	3 9/16 x 2 5/8 x 13 3/16
D	90 x 67 x 402	3 9/16 x 2 5/8 x 15 13/16
Weight/unit (avg.)	4 kg	8 lb
Area/layer	0.98 m <sup>2</sup>	10.53 ft <sup>2</sup>
Area/cube	3.92 m <sup>2</sup>	42.12 ft <sup>2</sup>
Qty/cube	A = 36 B = 36 C = 36 D = 36	
Length/layer	10.89 lin. m	35.64 lin. ft
Length/cube	43.56 lin. m	142.56 lin. ft
Weight/cube	550 kg	1210 lb

**Laying Patterns**



**Ancrage universel Tandem® Next**

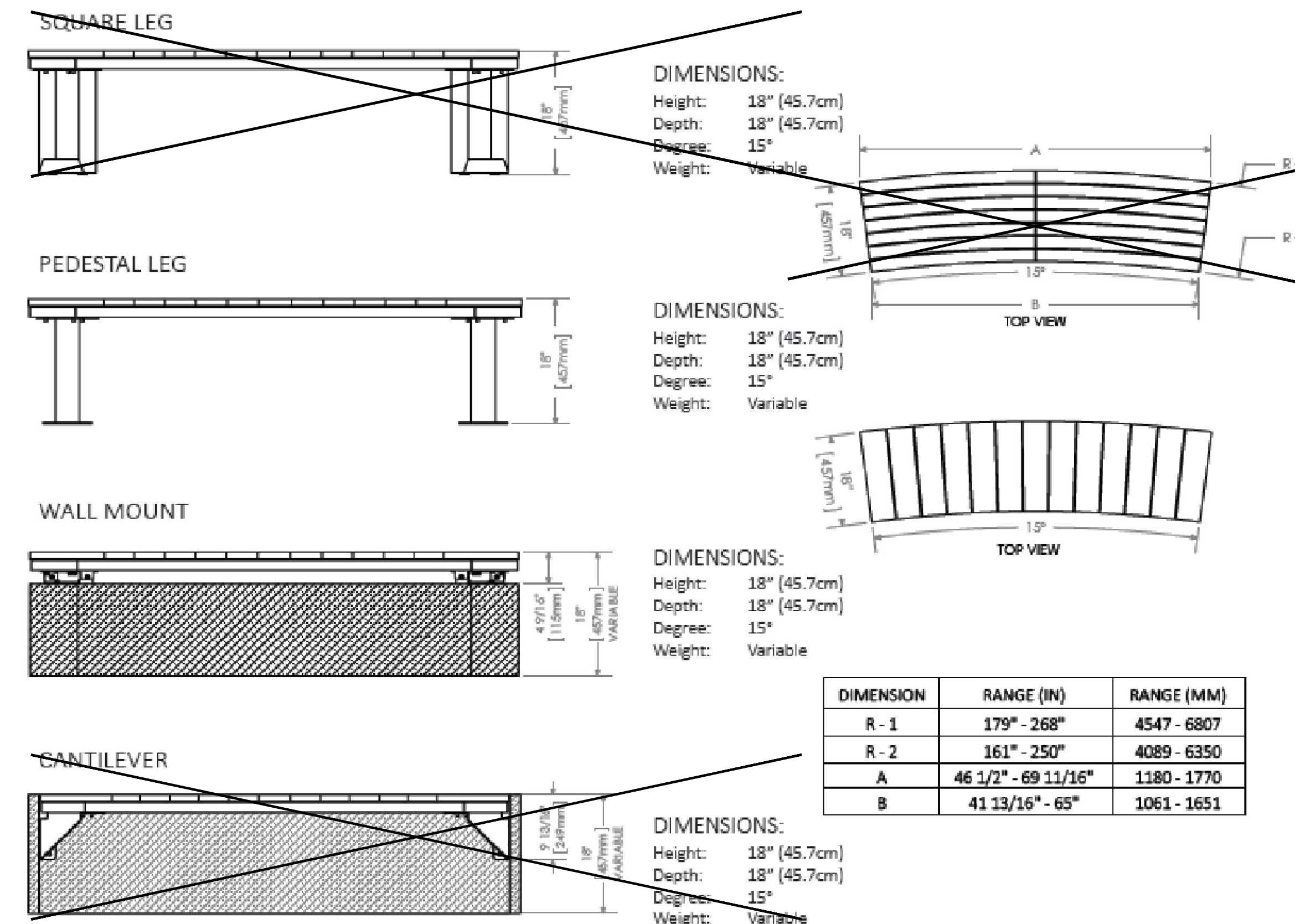


**MATERIALS:** The seat pan is constructed from steel. The seat employs 1" thick IPE, HDPE (plastic), or 3/4" thick HDPC (composite) slats. Thickness: IPE 1", HDPE 1", HDPC 3/4"

**FINISH:** All steel components are protected with E-Coat rust proofing. The Maglin Powdercoat System provides a durable finish on all metal surfaces.

**INSTALLATION:** The seats sections come preassembled with boards. Chosen mount option come as a separate component. Reference: INSTALLATION-INST\_OGM1900 document for onsite assembly and installation.

**TO SPECIFY:** Please contact your Maglin Site Furniture Representative.



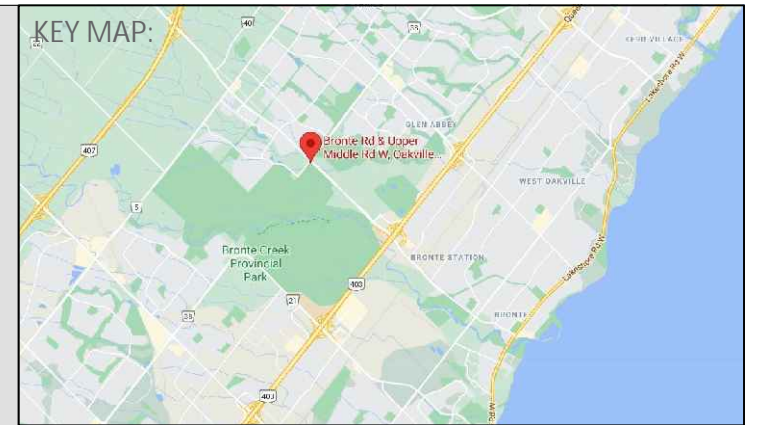
\*Please Note: When HDPC seat material is chosen, seat height is reduced by 1/4".



All drawings, specifications, design and details on this page remain the property of Maglin Site Furniture Inc. and may not be used without Maglin authorization. Details and specifications may vary due to continuing improvements of our products.

T 000-716-8808  
 F 077-260-9393  
 WWW.MAGLIN.COM  
 SALES@MAGLIN.COM

L4-D2 MAGLIN OGDEN BENCH RANGES TBD



**LEGEND:**

**Landscape Notes**

- Dimensions are shown in meters unless noted otherwise. Do not scale drawings.
- Contractor to review layout on site with Landscape Architect prior to commencing work.
- Contractor to verify grades and identify discrepancies prior to initiating work. Report any changes, discrepancies, or substitutions to the Landscape Architect for review prior to work.
- It is the contractor's responsibility to locate and verify all existing utilities and services prior to construction.
- Plant material support systems must be removed by the contractor at time of final acceptance. No extras will be paid to complete this work.
- Contractor to provide minimum one (1) year warranty from date accepted on all work unless otherwise specified.
- Grading and servicing shown is for information purposes. For grading and servicing information refer to engineering drawings.
- For lighting information and power distribution refer to the electrical drawings.
- Drawings are for construction only if Landscape Architects stamp is signed and dated by the Landscape Architect, and plans are approved by the Municipality.
- Tree planting within the municipal right-of-way to be undertaken by the Municipality unless noted otherwise.
- Unless otherwise specified all landscaped areas are to be sodded.
- Unless otherwise specified, all undeveloped areas shall be undisturbed and kept free and clear of debris.
- The Owner is to be aware of the Migratory Birds Convention Act, 1994. This Act is implemented by Environment Canada and the Owner is to make every effort to avoid removal of vegetation from the period of March 31st to August 31st.

**STAMP:**



NOT FOR CONSTRUCTION



**REVISIONS / SUBMISSIONS**

NO.	DESCRIPTION	DATE:
4	Issued for SPA	2022-03-31
3	Issued for SPA	2021-10-22
2	Issued for SPA	2021-09-20
1	Issued for SPA	2021-05-07

**CLIENT:**

New Horizon Development Group

**PROJECT TITLE:**

Ovation @ Encore Inc.

**SHEET TITLE:**

Details

**DWG No. L4**

**DRAWN BY:** AP

**SHEET No. 4 of 6**

**DESIGN BY:** LWS and AP

**PROJECT No:** 032-21

**CHECKED BY:** LWS

**SCALE:** As shown

**NORTH ARROW:**

L4-D1 PERMACON MELVILLE PAVING/VENEER UNITS

**Pro Tapered Polyresin Planter**

CHSVK-1010-BK - Pro Tapered Polyresin Planter

The Pro Tapered Polyresin Planter is lightweight, fade resistant, weather & impact resistant, and environmentally friendly. The Pro Series planters are constructed out of roto-molded commercial grade polyethylene. They feature a ribbed texture, and double wall design for added insulation (frost resistant up to -30°C). Equipped with removable shelf. Available in 'Black' or 'Grey' finish. For indoor or outdoor use.

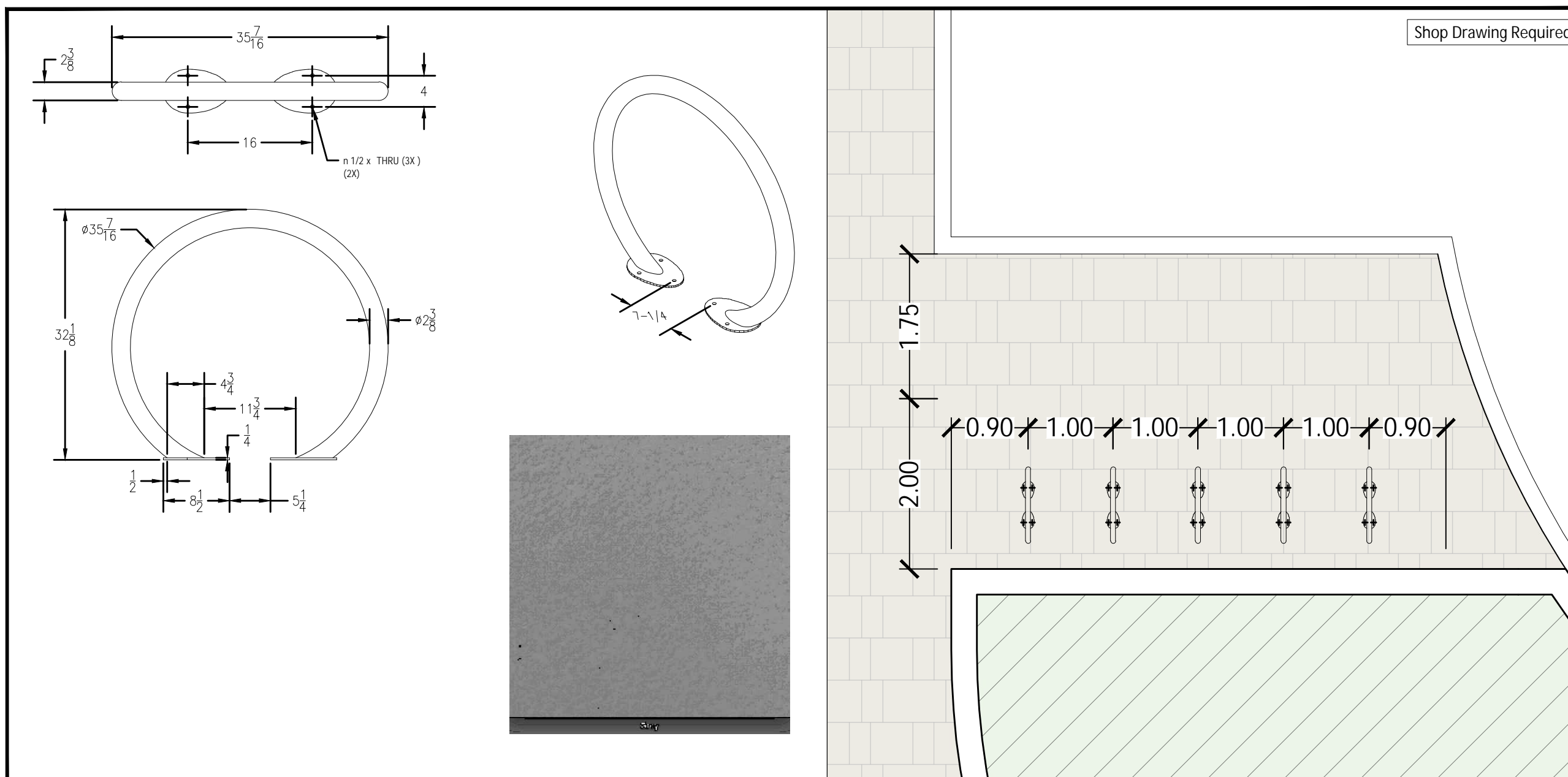


Width: 26" (66.0 cm)  
 Depth: 26" (66.0 cm)  
 Height: 30" (76.2 cm)

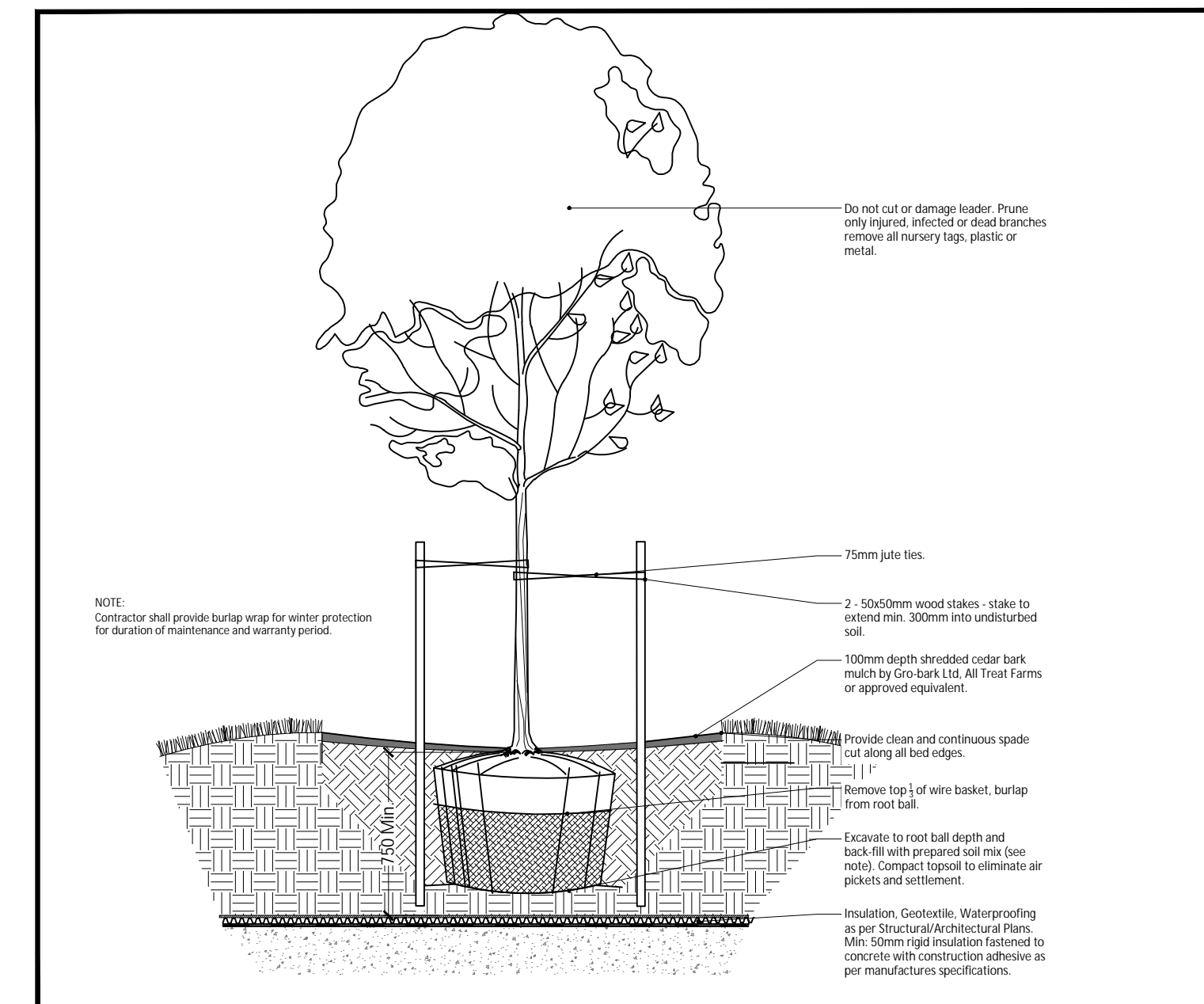


HAUSER CONTRACT CHSVK-1010-BK - Pro Tapered Polyresin Planter

L4-D3 PRO TAPERED POLYRESIN PLANTER

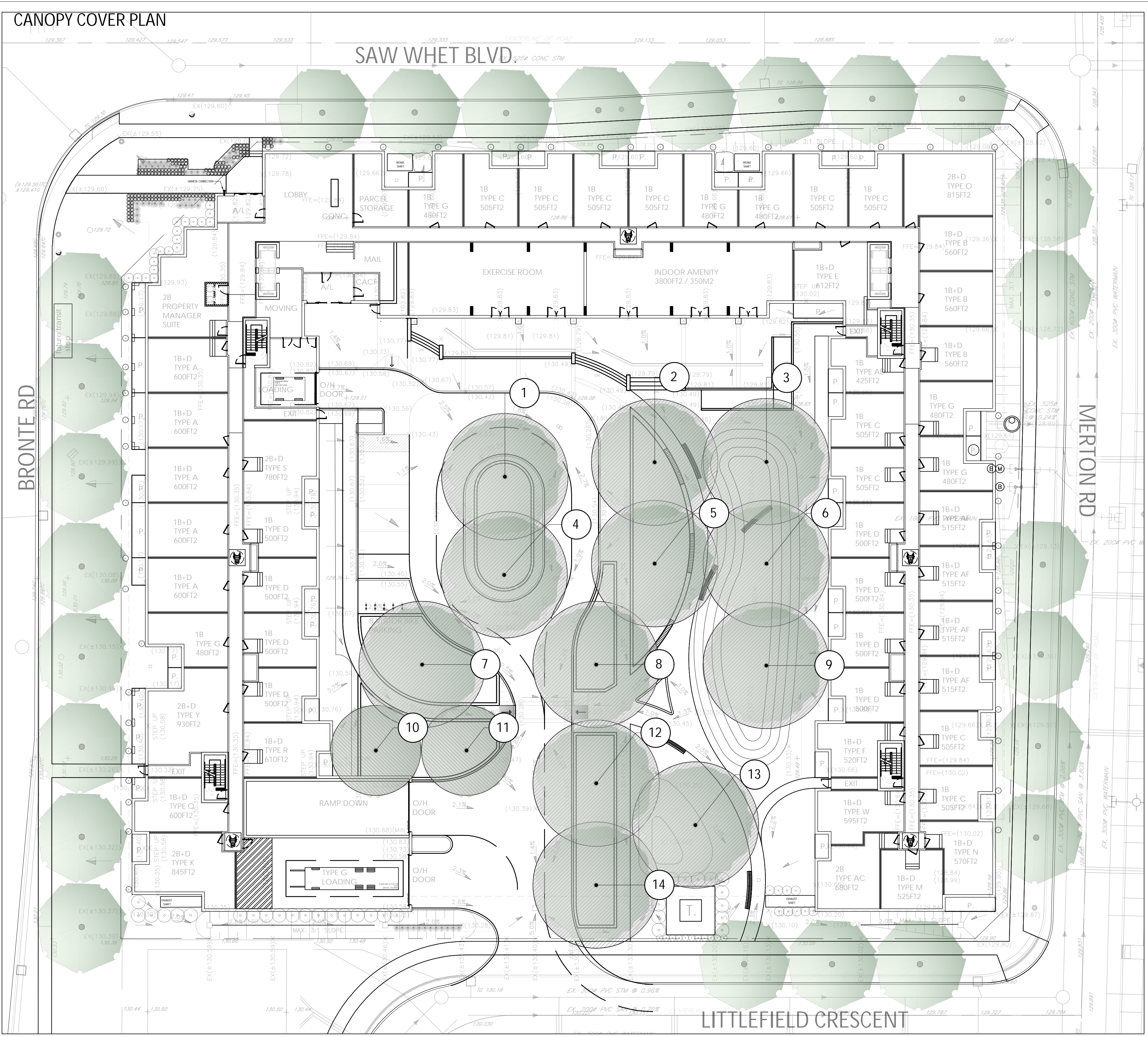


L4-D4 SURFACE MOUNTED HALO BICYCLE RACK, THERMOPLASTIC



L4-D5 TREE PLANTED ON MOUND OVER SLAB





Scale 1:250  
 0 5 10 25



WhitehouseUrbanDesign.ca

Canopy Coverage Calculation Chart

WUD File No. 031-21  
 File Name: Ovation @ Encore Inc.  
 Canopy Coverage Target: 20%

Tree #	Species	Stature (S,M,L)	Soil Volume per Tree (m³)	Canopy Area (m²)	Canopy Area Subtotal (m²)
<b>Proposed Canopy On Site</b>					
1	<i>Tilia americana</i>	L	106.2	139.3	
2	<i>Celtis occidentalis</i>	L	57.6	143.3	
3	<i>Liriodendron tulipifera</i>	L	30	143.3	
4	<i>Tilia americana</i>	L	106.2	146.9	
5	<i>Celtis occidentalis</i>	L	57.6	143.3	
6	<i>Celtis occidentalis</i>	L	30	143.3	
7	<i>Liriodendron tulipifera</i>	L	88.1	145	
8	<i>Liriodendron tulipifera</i>	L	16.3	143.3	
9	<i>Liriodendron tulipifera</i>	L	37.8	143.3	
10	<i>Acer x freemanii</i>	M	43.9	78.5	
11	<i>Acer x freemanii</i>	M	43.9	78.5	
12	<i>Tilia americana</i>	L	39.6	143.3	
13	<i>Liriodendron tulipifera</i>	L	30	143.3	
14	<i>Tilia americana</i>	L	39.6	140	
				<b>Subtotal of Proposed Canopy:</b>	<b>1874.6</b>

<b>Existing Canopy On Site</b>	Subtotal of Existing Canopy:	0
	Multiplied by bonus factor of 1.5	0

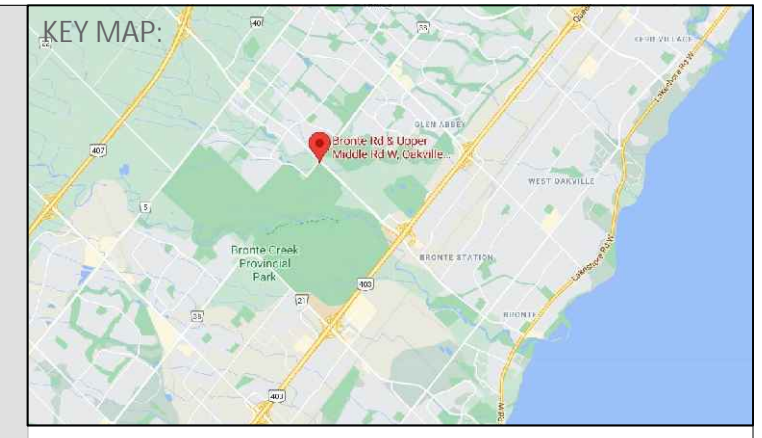
<b>Existing Canopy Overhanging Site</b>	Subtotal of Existing Overhanging Canopy:	0
---	--	---

<b>Total # of Trees</b>	<b>Total Canopy Area (m²)</b>
14	1874.6

<b>Canopy Summary</b>	
Total Site Area	8687
Site Canopy Cover	21.60%
Canopy Cover Target by Land Use	20%

<b>Parking Summary</b>	
Total Surface Parking Spaces Proposed	5
Total # of Trees in or within 5m of Parking Area	0

Notes:  
 1) All Site Trees are over underground structural slab and depth has been calculated at 750mm. It is expected that there will be over 750mm soil depth.



- LEGEND:**
- Proposed Public Street Tree
  - Proposed Site Tree
  - Canopy Cover Calculation (Large Stature)
  - Canopy Cover Calculation (Medium Stature)

- Landscape Notes**
- Dimensions are shown in meters unless noted otherwise. Do not scale drawings.
  - Contractor to review layout on site with Landscape Architect prior to commencing work.
  - Contractor to verify grades and identify discrepancies prior to initiating work. Report any changes, discrepancies, or substitutions to the Landscape Architect for review prior to work.
  - It is the contractor's responsibility to locate and verify all existing utilities and services prior to construction.
  - Plant material support systems must be removed by the contractor at time of final acceptance. No extras will be paid to complete this work.
  - Contractor to provide minimum one (1) year warranty from date accepted on all work unless otherwise specified.
  - Grading and servicing shown is for information purposes. For grading and servicing information refer to engineering drawings.
  - For lighting information and power distribution refer to the electrical drawings.
  - Drawings are for construction only if Landscape Architects stamp is signed and dated by the Landscape Architect, and plans are approved by the Municipality.
  - Tree planting within the municipal right-of-way to be undertaken by the Municipality unless noted otherwise.
  - Unless otherwise specified all landscaped areas are to be sodded.
  - Unless otherwise specified, all undeveloped areas shall be undisturbed and kept free and clear of debris.
  - The Owner is to be aware of the Migratory Birds Convention Act, 1994. This Act is implemented by Environment Canada and the Owner is to make every effort to avoid removal of vegetation from the period of March 31st to August 31st.



**REVISIONS / SUBMISSIONS**

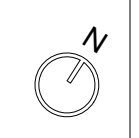
NO.	DESCRIPTION	DATE:
4	Issued for SPA	2022-03-31
3	Issued for SPA	2021-10-22
2	Issued for SPA	2021-09-20
1	Issued for SPA	2021-05-07

**CLIENT:**  
 New Horizon Development Group

**PROJECT TITLE:**  
 Ovation @ Encore Inc.

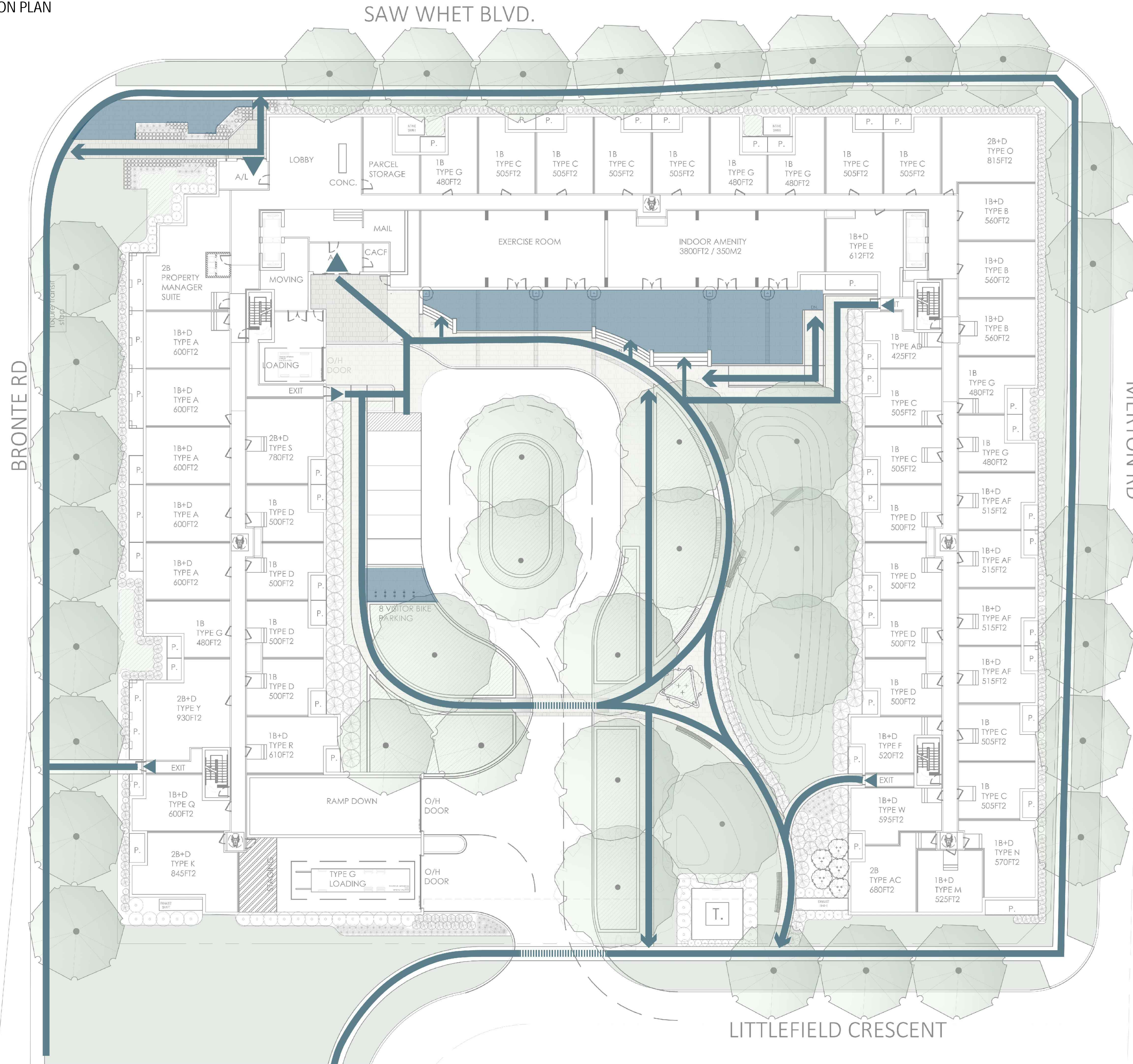
**SHEET TITLE:**  
 Canopy Cover Plan

**DWG No. L5** DRAWN BY: AP  
**SHEET No. 5 of 6** DESIGN BY: LWS and AP  
**PROJECT No: 032-21** CHECKED BY: LWS  
**SCALE: As shown** NORTH ARROW:









PEDESTRIAN CIRCULATION PLAN



LEGEND

-  Pedestrian Flows
-  Pedestrian Crosswalks
-  Pedestrian Amenity Areas
-  Building Entrances



Landscape Notes

1. Dimensions are shown in meters unless noted otherwise. Do not scale drawings.
2. Contractor to review layout on site with Landscape Architect prior to commencing work.
3. Contractor to verify grades and identify discrepancies prior to initiating work. Report any changes, discrepancies, or substitutions to the Landscape Architect for review prior to work.
4. It is the contractor's responsibility to locate and verify all existing utilities and services prior to construction.
5. Plant material support systems must be removed by the contractor at time of final acceptance. No extras will be paid to complete this work.
6. Contractor to provide minimum one (1) year warranty from date accepted on all work unless otherwise specified.
7. Grading and servicing shown is for information purposes. For grading and servicing information refer to engineering drawings.
8. For lighting information and power distribution refer to the electrical drawings.
9. Drawings are for construction only if Landscape Architects stamp is signed and dated by the Landscape Architect, and plans are approved by the Municipality.
10. Tree planting within the municipal right-of-way to be undertaken by the Municipality unless noted otherwise.
11. Unless otherwise specified all landscaped areas are to be sodded.
12. Unless otherwise specified, all undeveloped areas shall be undisturbed and kept free and clear of debris.
13. The Owner is to be aware of the Migratory Birds Convention Act, 1994. This Act is implemented by Environment Canada and the Owner is to make every effort to avoid removal of vegetation from the period of March 31st to August 31st.

STAMP:



REVISIONS / SUBMISSIONS

NO.	DESCRIPTION	DATE:
4	Issued for SPA	2022-03-31
3	Issued for SPA	2021-10-22
2	Issued for SPA	2021-09-20
1	Issued for SPA	2021-05-07

CLIENT:

New Horizon Development Group

PROJECT TITLE:

Ovation @ Encore Inc.

SHEET TITLE:

Pedestrian Circulation Plan

DWG No. L6

DRAWN BY: AP

SHEET No. 6 of 6

DESIGN BY: LWS and AP

PROJECT No: 032-21

CHECKED BY: LWS

SCALE: As shown

NORTH ARROW:

