

NORTH OAKVILLE BLOCK 6

ISSUED FOR SPA
MAY 17, 2023

LIST OF DRAWINGS

MP-1 OVERALL LANDSCAPE PLAN

L-1 LANDSCAPE ENLARGEMENT
L-2 LANDSCAPE ENLARGEMENT
L-3 LANDSCAPE ENLARGEMENT
L-4 LANDSCAPE ENLARGEMENT

C-1 CANOPY COVERAGE PLAN
C-2 CANOPY COVERAGE PLAN
C-3 CANOPY COVERAGE PLAN
C-4 CANOPY COVERAGE PLAN

D-1 LANDSCAPE DETAILS

KEY PLAN



BASE INFORMATION OBTAINED ELECTRONICALLY FROM
BALDASSARRA ARCHITECTS INC. (JOB NO. 21-49, TEL. 905-660-0722)

no.	date	version	by
4.	MAY 17 2023	ISSUED FOR SPA	SO/ HH
3.	JAN 18 2023	ISSUED FOR SPA	SO/ ED
2.	MAR 14 2022	ISSUED FOR SPA	SO/ DS
1.	NOV 26 2021	ISSUED FOR CLIENT REVIEW	SO/ DS

All information hereon to be checked and verified at the site and any discrepancies must be reported to and clarified by the landscape architect before commencing work. All drawings, specifications, details, digital information, etc., prepared by the landscape architect are instruments of service and as such are his property and must be returned at his request.

MEMBER

ALEXANDER BUDREVICS
& ASSOCIATES LIMITED
LANDSCAPE ARCHITECTS

895 Don Mills Road, Second Tower, Suite 212
Toronto, Ontario, Canada, M3C 1W3

☎ 416.444.5201
☎ 416.444.5208

www.budrevics.com

project
NORTH OAKVILLE BLOCK 6
SIXTH LINE & WILLIAM HALTON PARKWAY
OAKVILLE, ONTARIO

BALDASSARRA ARCHITECTS

drawing
**OVERALL
LANDSCAPE PLAN**

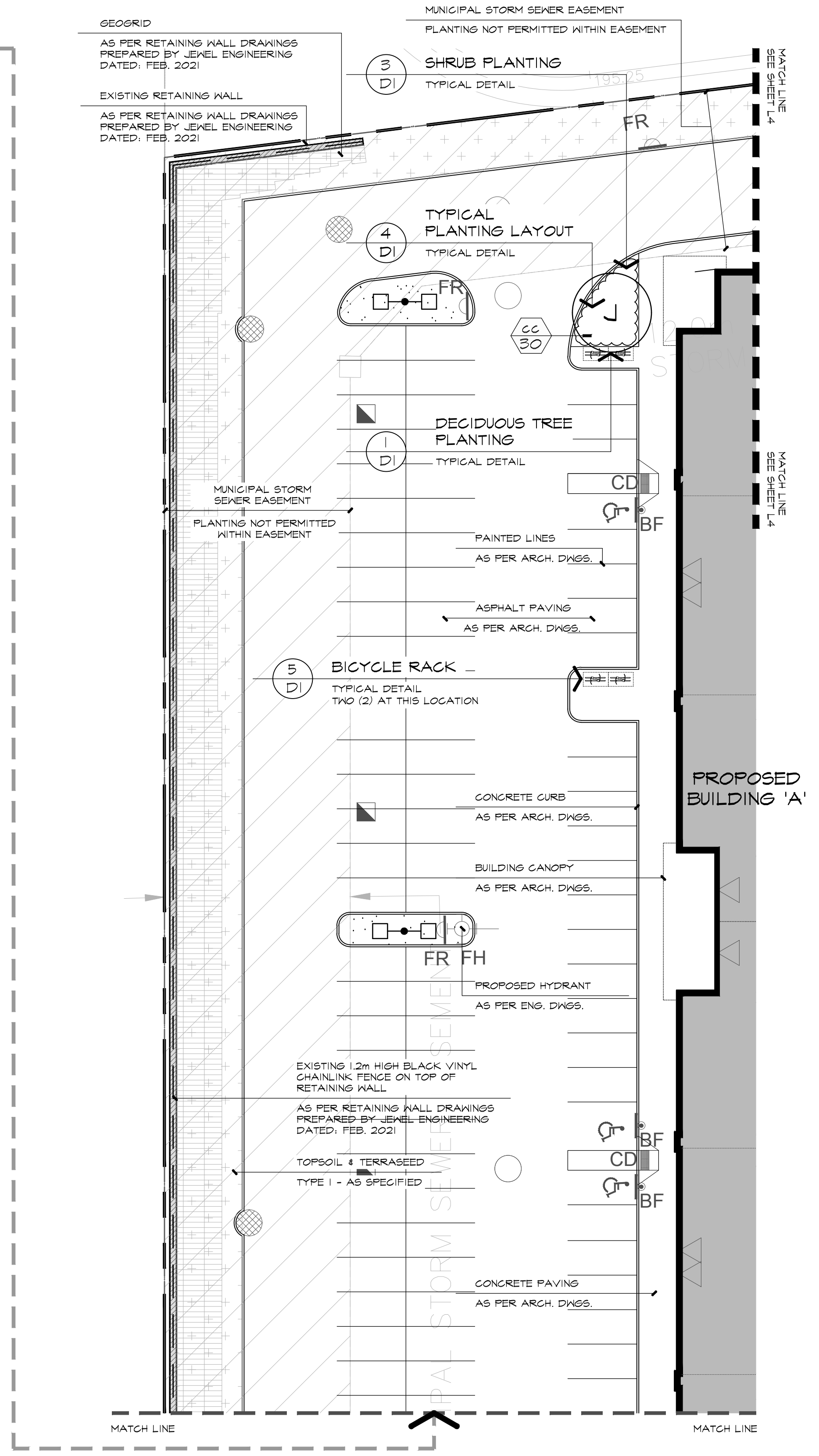
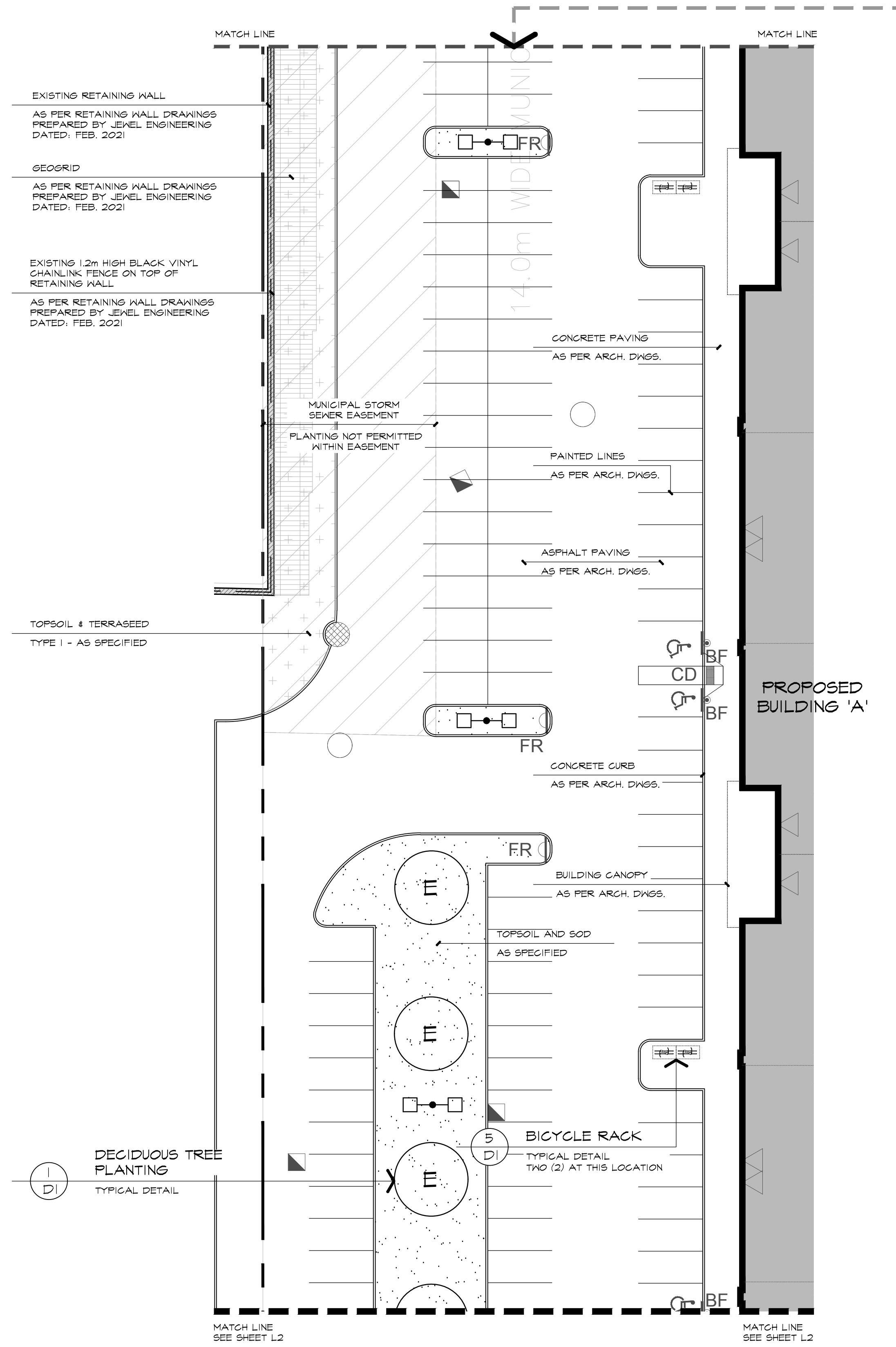
date	NOVEMBER 19, 2021	drawn	SO/DS
scale*	1:750	file	3530 MP1 V4-230516
direction		project no.	3530
		sheet no.	MP-1

*NOTED SCALE IS APPLICABLE ONLY WHEN PRINTED ON ARCH D (34"X36") SIZE SHEET

REFERENCE PLANT LIST

KEY	COMMON NAME
DECIDUOUS TREES	
A	CLUMP RED MAPLE
B	RED SUNSET MAPLE
D	SHADEMASTER HONEY-LOCUST
E	EUROPEAN BEECH
F	LONDON PLANE TREE
G	RED OAK
J	PRINCETON ELM
N	TULIP TREE
P	BASSWOOD
Q	MAIDENHAIR TREE
CONIFEROUS TREES	
L	COLORADO SPRUCE
M	EASTERN WHITE PINE
DECIDUOUS SHRUBS	
aa	NEARLY WILD ROSE
bb	DIABLO NINEBARK
cc	GOLDFLAME SPIREA
dd	RED OSIER DOGWOOD
ee	FRAGRANT SUMAC
ff	COMMON NINEBARK

*REFER TO SHEET D-1 FOR MASTER PLANT LIST



LEGEND

- DECIDUOUS TREES
- SHRUBS
- BICYCLE RACKS
- SODDED AREA
- TYPE 1 TERRASEEDING
- LIGHTING

BASE INFORMATION OBTAINED ELECTRONICALLY FROM BALDASSARRA ARCHITECTS INC. (JOB NO. 21-49, TEL. 905-660-0722)

no.	date	version	by
4.	MAY 17 2023	ISSUED FOR SPA	SO/HH
3.	JAN 18 2023	ISSUED FOR SPA	SO/ED
2.	MAR 14 2022	ISSUED FOR SPA	SO/DS
1.	NOV 26 2021	ISSUED FOR CLIENT REVIEW	SO/DS

All information hereon to be checked and verified at the site and any discrepancies must be reported to and clarified by the landscape architect before commencing work. All drawings, specifications, details, digital information, etc., prepared by the landscape architect are instruments of service and as such are his property and must be returned at his request.

ALEXANDER BUDREVICS
LANDSCAPE ARCHITECTS
895 Don Mills Road, Second Tower, Suite 212
Toronto, Ontario, Canada, M3C 1W3
416.444.5201
416.444.5208
www.budrevics.com

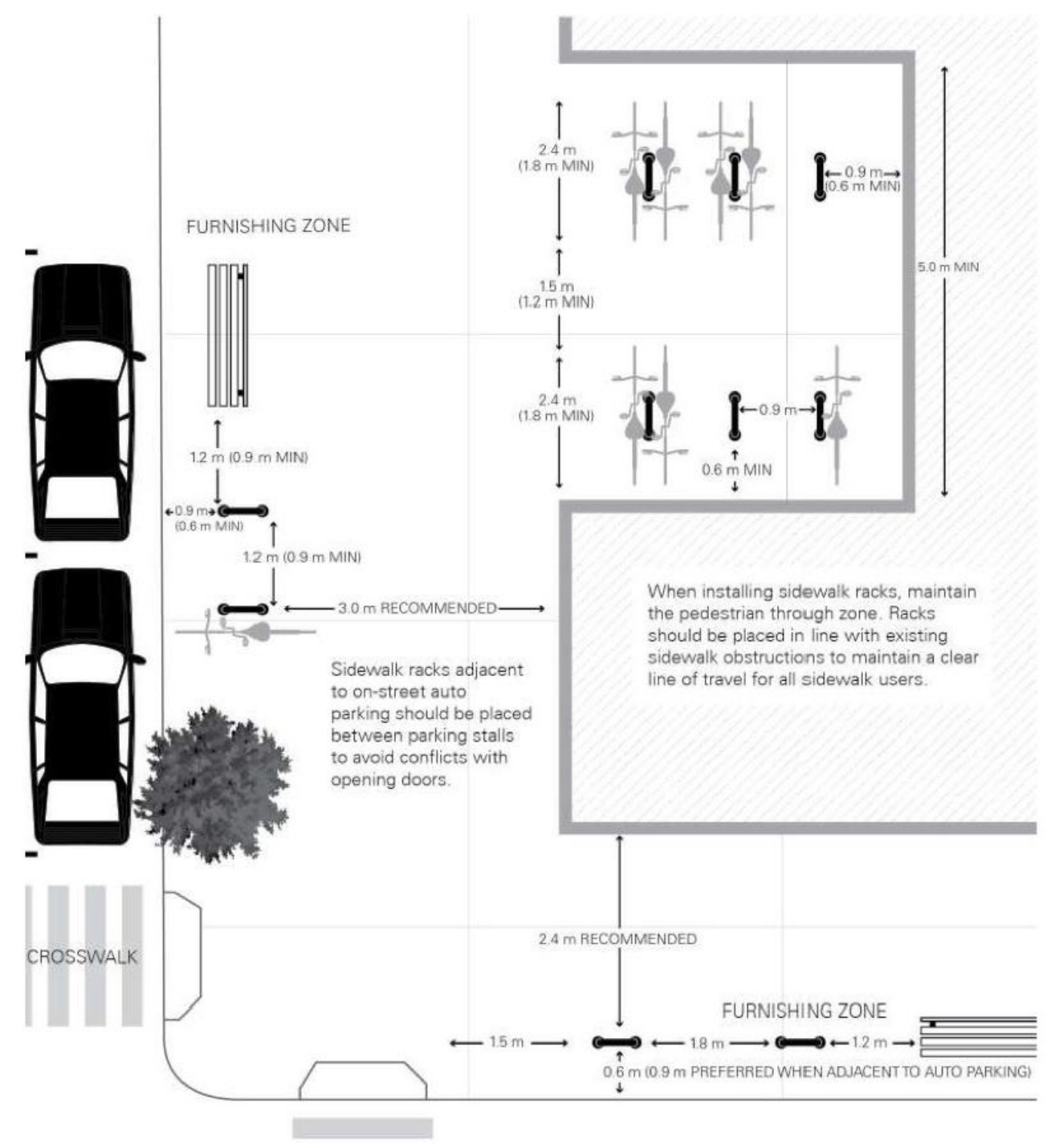
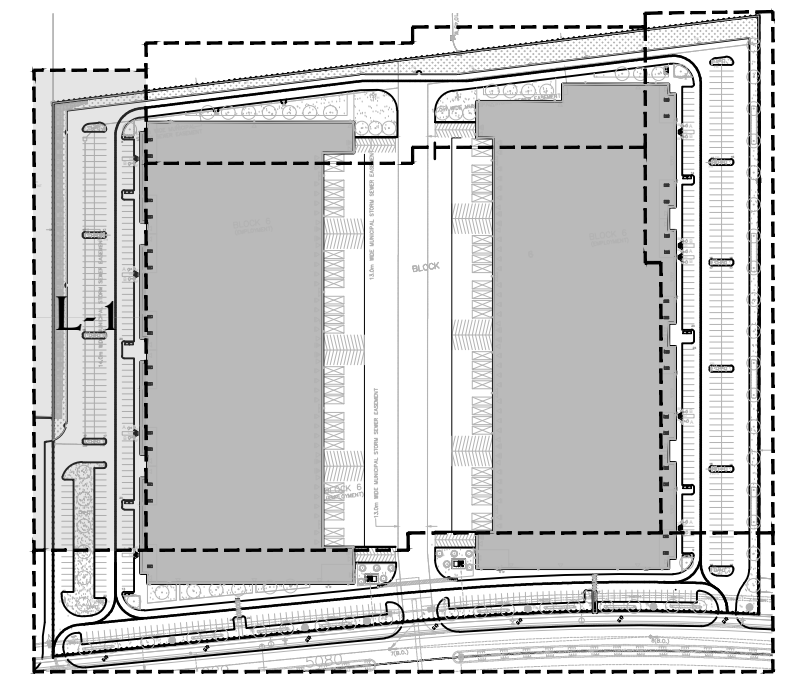


Figure 9.22 - Bike Parking Configuration Clearances

Adapted from Association of Pedestrian and Bicycle Professionals Essentials of Bike Parking report (2015)

REQUIRED BIKE PARKING CLEARANCES
TYPICAL FOR ALL BIKE PARKING SPACES ON SITE

REFERENCE PLAN



project
NORTH OAKVILLE BLOCK 6
SIXTH LINE & WILLIAM HALTON PARKWAY
OAKVILLE, ONTARIO
BALDASSARRA ARCHITECTS

drawing
LANDSCAPE ENLARGEMENT

date	NOVEMBER 19, 2021	drawn	SO/DS
scale*	1:250	file	3530 L1 V4-230516
direction		project no.	3530
		sheet no.	L-1

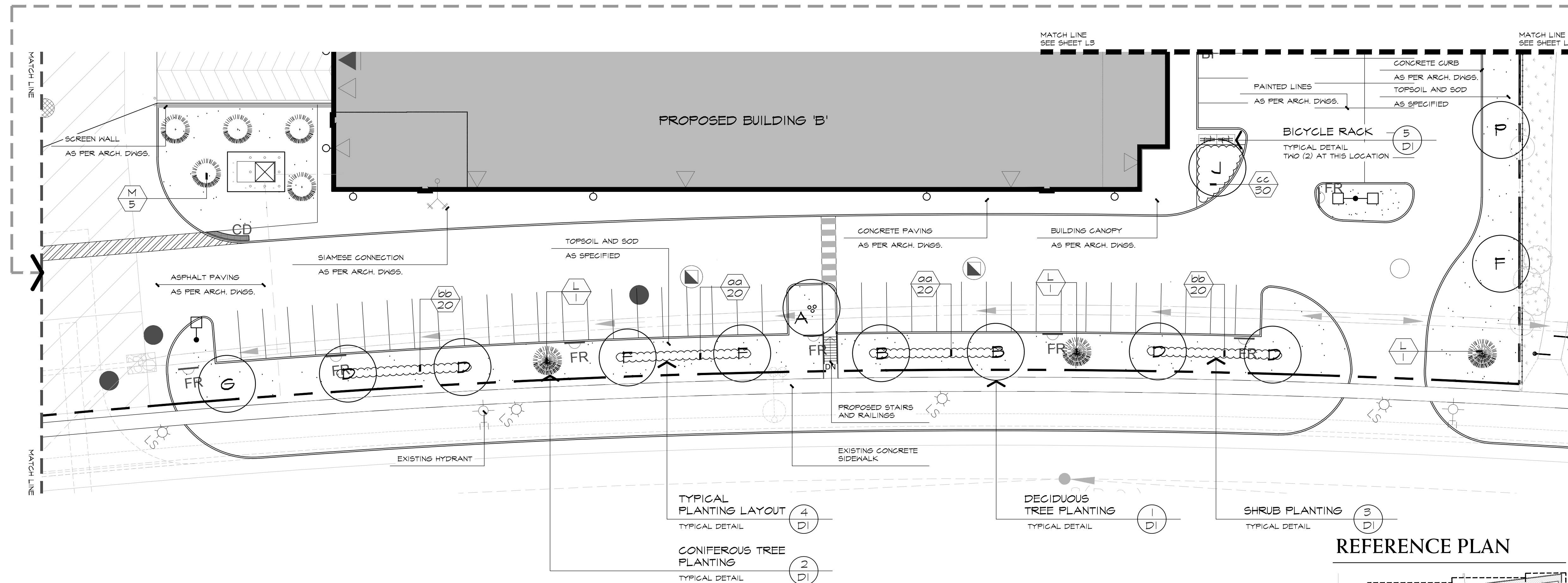
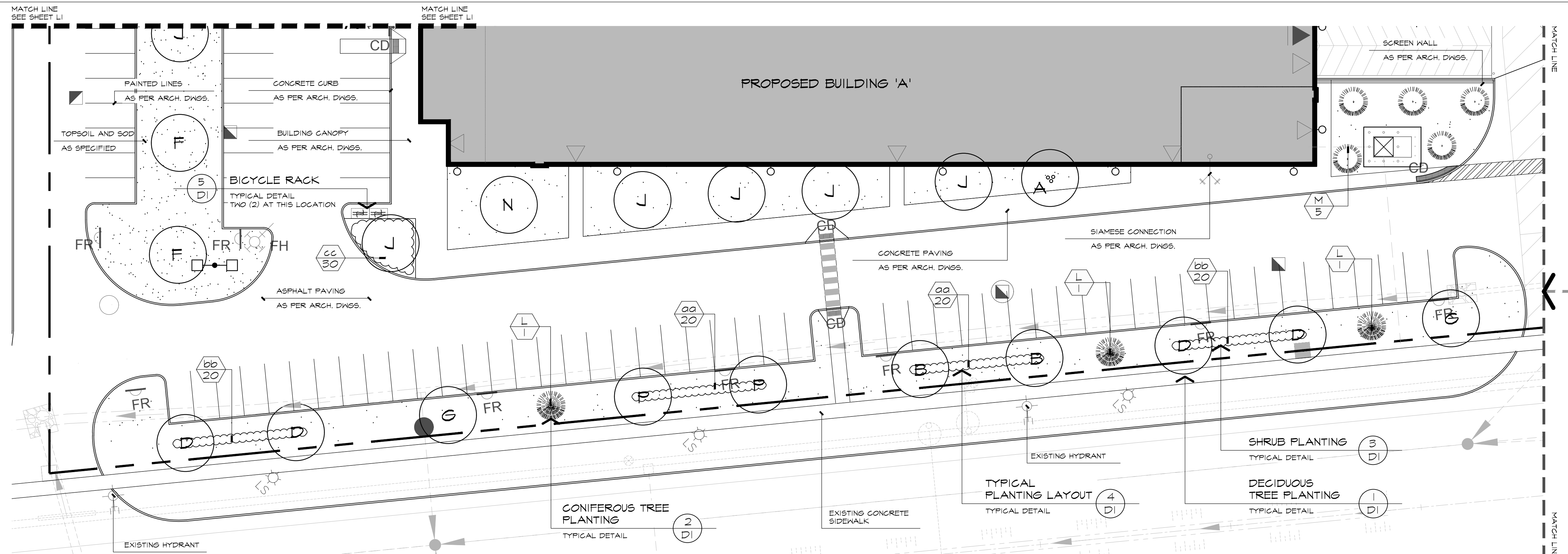
*NOTED SCALE IS APPLICABLE ONLY WHEN PRINTED ON ARCH D (34"x36") SIZE SHEET

REFERENCE PLANT LIST

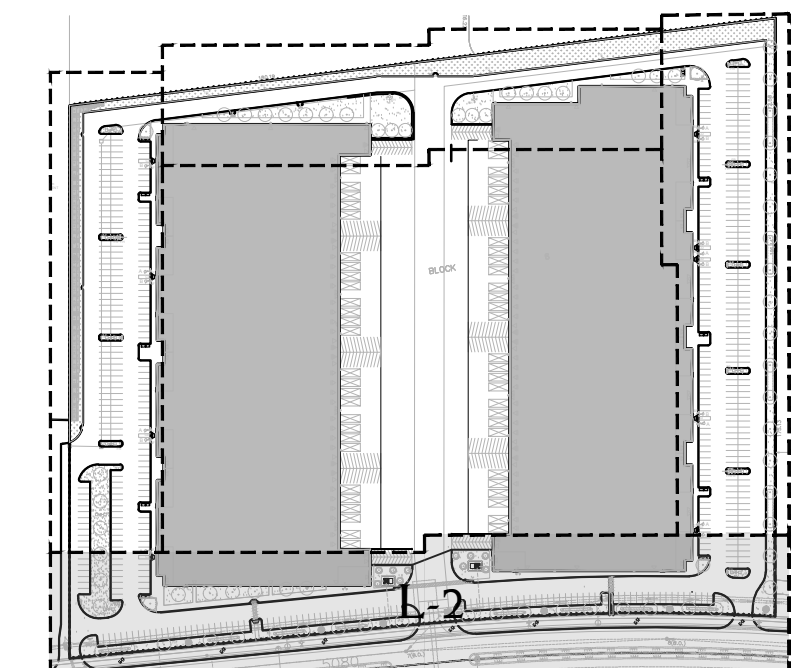
KEY COMMON NAME

- DECIDUOUS TREES**
- A CLUMP RED MAPLE
 - B RED SUNSET MAPLE
 - D SHADEMASTER HONEY-LOGUST
 - E EUROPEAN BEECH
 - F LONDON PLANE TREE
 - G RED OAK
 - J PRINCETON ELM
 - N TULIP TREE
 - P BASSWOOD
 - Q MAIDENHAIR TREE
- CONIFEROUS TREES**
- L COLORADO SPRUCE
 - M EASTERN WHITE PINE
- DECIDUOUS SHRUBS**
- aa NEARLY WILD ROSE
 - bb DIABLO NINEBARK
 - cc GOLDFLAME SPIREA
 - dd RED OSIER DOGWOOD
 - ee FRAGRANT SUMAC
 - ff COMMON NINEBARK

*REFER TO SHEET D-1 FOR MASTER PLANT LIST



REFERENCE PLAN



LEGEND

- DECIDUOUS TREES
- DECIDUOUS MULTI-STEM TREES
- CONIFEROUS TREES
- SHRUBS
- BICYCLE RACKS
- SODDED AREA
- LIGHTING

BASE INFORMATION OBTAINED ELECTRONICALLY FROM BALDASSARRA ARCHITECTS INC. (JOB NO. 21-49, TEL. 905-660-0722)

no.	date	version	by
4.	MAY 17 2023	ISSUED FOR SPA	SO/HH
3.	JAN 18 2023	ISSUED FOR SPA	SO/ED
2.	MAR 14 2022	ISSUED FOR SPA	SO/DS
1.	NOV 26 2021	ISSUED FOR CLIENT REVIEW	SO/DS

All information hereon to be checked and verified at the site and any discrepancies must be reported to and clarified by the landscape architect before commencing work. All drawings, specifications, details, digital information, etc., prepared by the landscape architect are instruments of service and as such are his property and must be returned at his request.

ALEXANDER BUDREVICS
 ASSOCIATES LIMITED
 LANDSCAPE ARCHITECTS

895 Don Mills Road, Second Tower, Suite 212
 Toronto, Ontario, Canada, M3C 1W3

416.444.5201
 416.444.5208

www.budrevics.com

project
NORTH OAKVILLE BLOCK 6
 SIXTH LINE & WILLIAM HALTON PARKWAY
 OAKVILLE, ONTARIO
 BALDASSARRA ARCHITECTS

LANDSCAPE ENLARGEMENT

date NOVEMBER 19, 2021	drawn SO/DS
scale* 1:250	file 3530 L2 V4-230516
direction 	project no. 3530
	sheet no. L-2

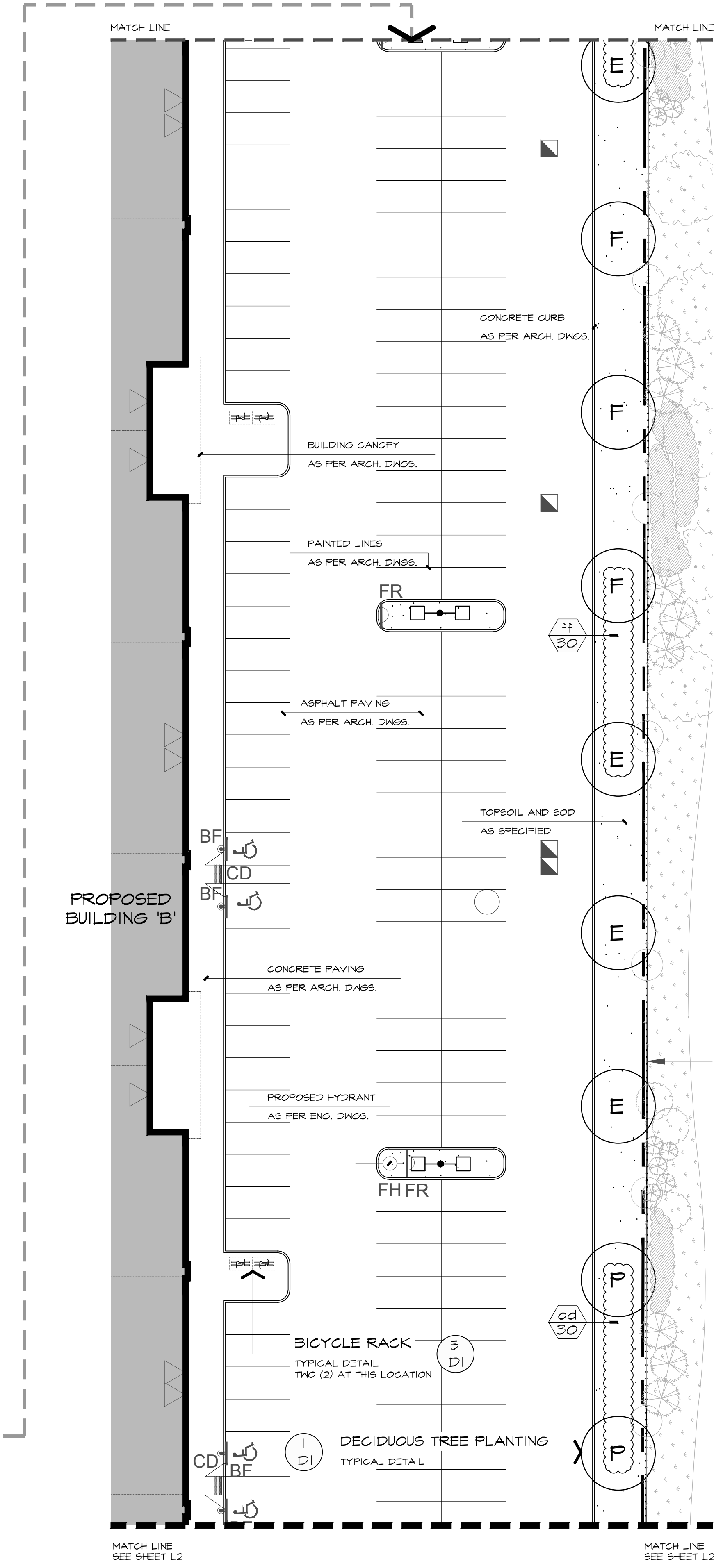
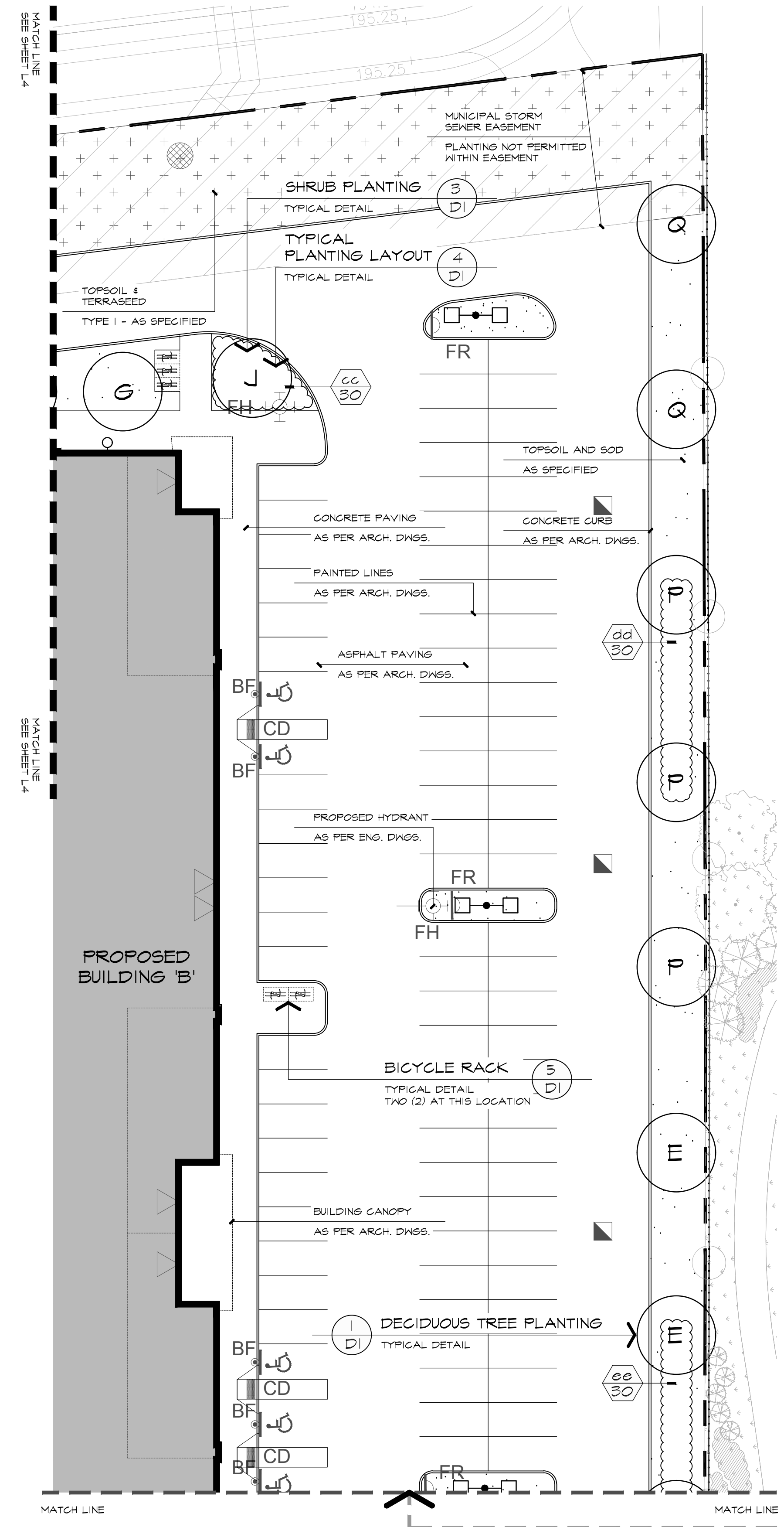
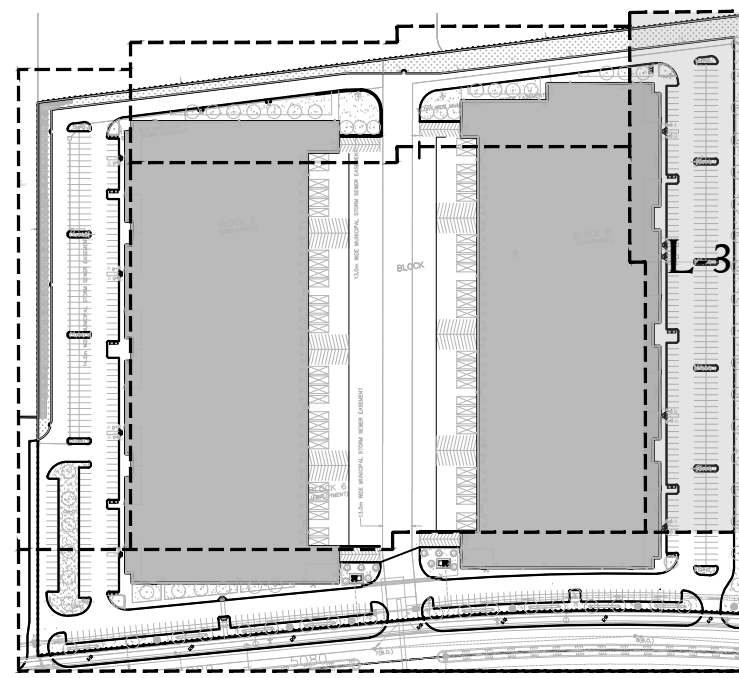
*NOTED SCALE IS APPLICABLE ONLY WHEN PRINTED ON ARCH D (34"x36") SIZE SHEET

REFERENCE PLANT LIST

KEY	COMMON NAME
DECIDUOUS TREES	
A	CLUMP RED MAPLE
B	RED SUNSET MAPLE
D	SHADEMASTER HONEY-LOCUST
E	EUROPEAN BEECH
F	LONDON PLANE TREE
G	RED OAK
J	FRINGETON ELM
N	TULIP TREE
P	BASSWOOD
Q	MAIDENHAIR TREE
CONIFEROUS TREES	
L	COLORADO SPRUCE
M	EASTERN WHITE PINE
DECIDUOUS SHRUBS	
aa	NEARLY WILD ROSE
bb	DIABLO NINEBARK
cc	GOLDFLAME SPIREA
dd	RED OSIER DOGWOOD
ee	FRAGRANT SUMAC
ff	COMMON NINEBARK

*REFER TO SHEET D-1 FOR MASTER PLANT LIST

REFERENCE PLAN



LEGEND

- DECIDUOUS TREES
- BICYCLE RACKS
- SODDED AREA
- TYPE 1 TERRASEEDING
- LIGHTING

BASE INFORMATION OBTAINED ELECTRONICALLY FROM BALDASSARRA ARCHITECTS INC. (JOB NO. 21-49, TEL. 905-660-0722)

no.	date	version	by
4.	MAY 17 2023	ISSUED FOR SPA	SO/HH
3.	JAN 18 2023	ISSUED FOR SPA	SO/ED
2.	MAR 14 2022	ISSUED FOR SPA	SO/DS
1.	NOV 26 2021	ISSUED FOR CLIENT REVIEW	SO/DS

All information hereon to be checked and verified at the site and any discrepancies must be reported to and clarified by the landscape architect before commencing work. All drawings, specifications, details, digital information, etc., prepared by the landscape architect are instruments of service and as such are his property and must be returned at his request.

MEMBER

ALEXANDER BUDREVICS
ASSOCIATES LIMITED
LANDSCAPE ARCHITECTS

895 Don Mills Road, Second Tower, Suite 212
Toronto, Ontario, Canada, M3C 1W3

416.444.5201
416.444.5208

www.budrevics.com

project
NORTH OAKVILLE BLOCK 6
SIXTH LINE & WILLIAM HALTON PARKWAY
OAKVILLE, ONTARIO
BALDASSARRA ARCHITECTS

LANDSCAPE ENLARGEMENT

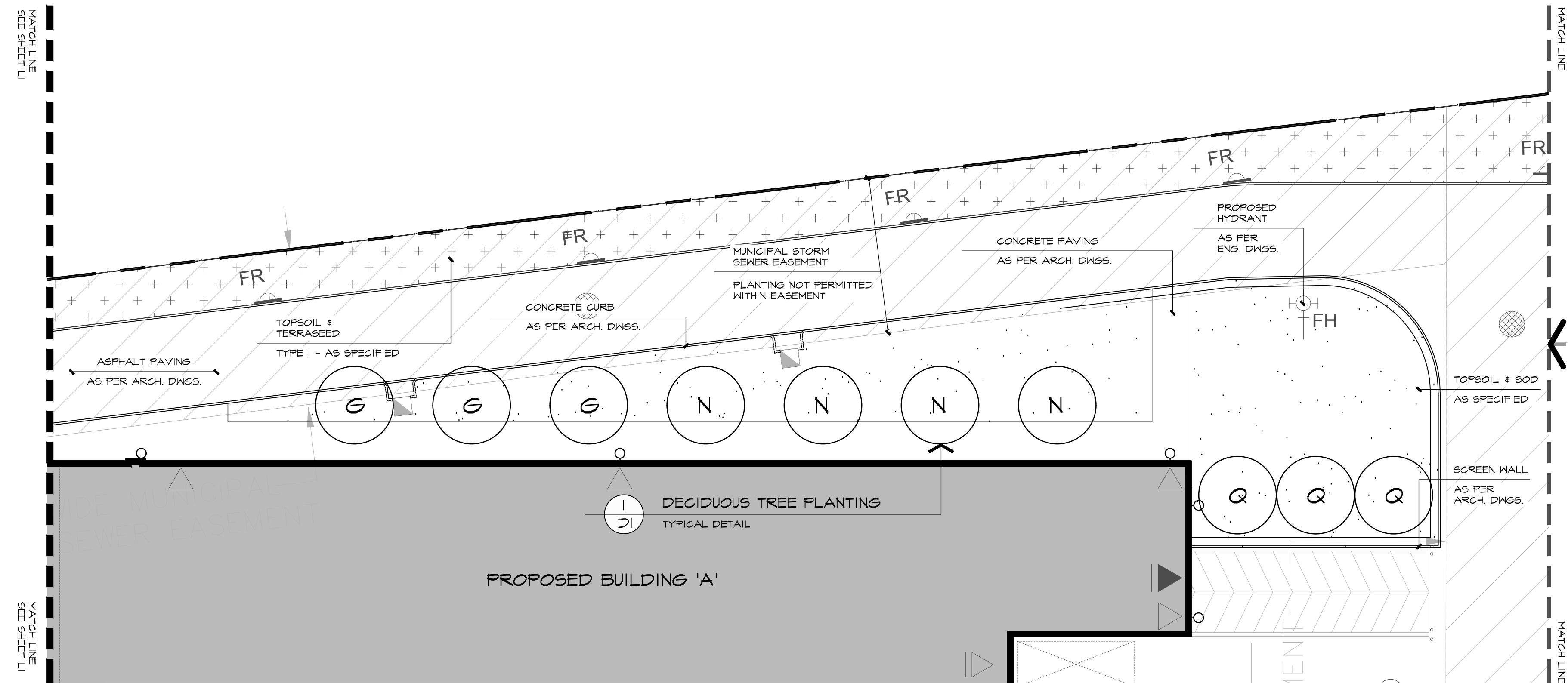
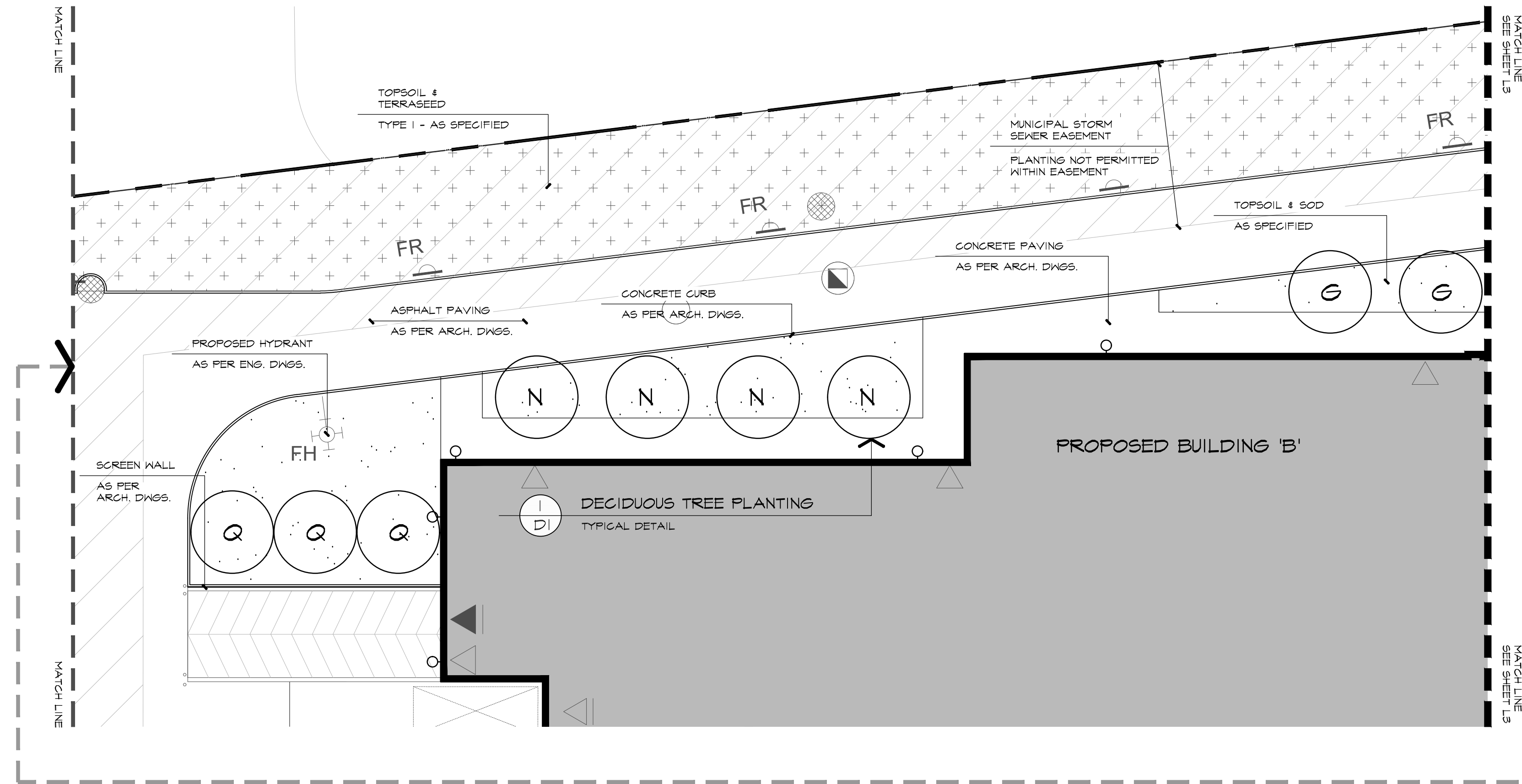
date	NOVEMBER 19, 2021	drawn	SO/DS
scale*	1:250	file	3530 L3 V4-230516
direction		project no.	3530
		sheet no.	L-3

*NOTED SCALE IS APPLICABLE ONLY WHEN PRINTED ON ARCH D (34"x36") SIZE SHEET

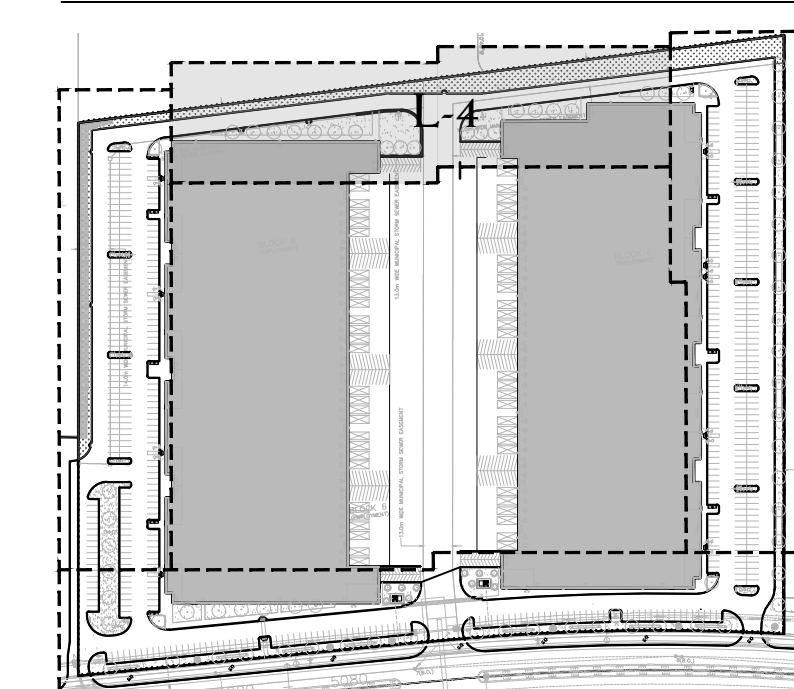
REFERENCE PLANT LIST

KEY	COMMON NAME
DECIDUOUS TREES	
A	CLUMP RED MAPLE
B	RED SUNSET MAPLE
D	SHADEMASTER HONEY-LOCUST
E	EUROPEAN BEECH
F	LONDON PLANE TREE
G	RED OAK
J	FRINCETON ELM
N	TULIP TREE
P	BASSWOOD
Q	MAIDENHAIR TREE
CONIFEROUS TREES	
L	COLORADO SPRUCE
M	EASTERN WHITE PINE
DECIDUOUS SHRUBS	
aa	NEARLY WILD ROSE
bb	DIABLO NINEBARK
cc	GOLDFLAME SPIREA
dd	RED OSIER DOGWOOD
ee	FRAGRANT SUMAC
ff	COMMON NINEBARK

*REFER TO SHEET D-1 FOR MASTER PLANT LIST



REFERENCE PLAN



LEGEND

	DECIDUOUS TREES
	BICYCLE RACKS
	SODDED AREA
	TYPE 1 TERRASEEDING
	LIGHTING

BASE INFORMATION OBTAINED ELECTRONICALLY FROM BALDASSARRA ARCHITECTS INC. (JOB NO. 21-49, TEL. 905-660-0722)

no.	date	version	by
4.	MAY 17 2023	ISSUED FOR SPA	SO/HH
3.	JAN 18 2023	ISSUED FOR SPA	SO/ED
2.	MAR 14 2022	ISSUED FOR SPA	SO/DS
1.	NOV 26 2021	ISSUED FOR CLIENT REVIEW	SO/DS

All information hereon to be checked and verified at the site and any discrepancies must be reported to and clarified by the landscape architect before commencing work. All drawings, specifications, details, digital information, etc., prepared by the landscape architect are instruments of service and as such are his property and must be returned at his request.

ALEXANDER BUDREVICS & ASSOCIATES LIMITED LANDSCAPE ARCHITECTS

895 Don Mills Road, Second Tower, Suite 212
Toronto, Ontario, Canada, M3C 1W3

☎ 416.444.5201
☎ 416.444.5208

www.budrevics.com

project
NORTH OAKVILLE BLOCK 6
SIXTH LINE & WILLIAM HALTON PARKWAY
OAKVILLE, ONTARIO
BALDASSARRA ARCHITECTS
drawing

LANDSCAPE ENLARGEMENT

date	NOVEMBER 19, 2021	drawn	SO/DS
scale*	1:250	file	3530 L4 V4-230516
direction		project no.	3530
		sheet no.	L-4

*NOTED SCALE IS APPLICABLE ONLY WHEN PRINTED ON ARCH D (34"x36") SIZE SHEET