

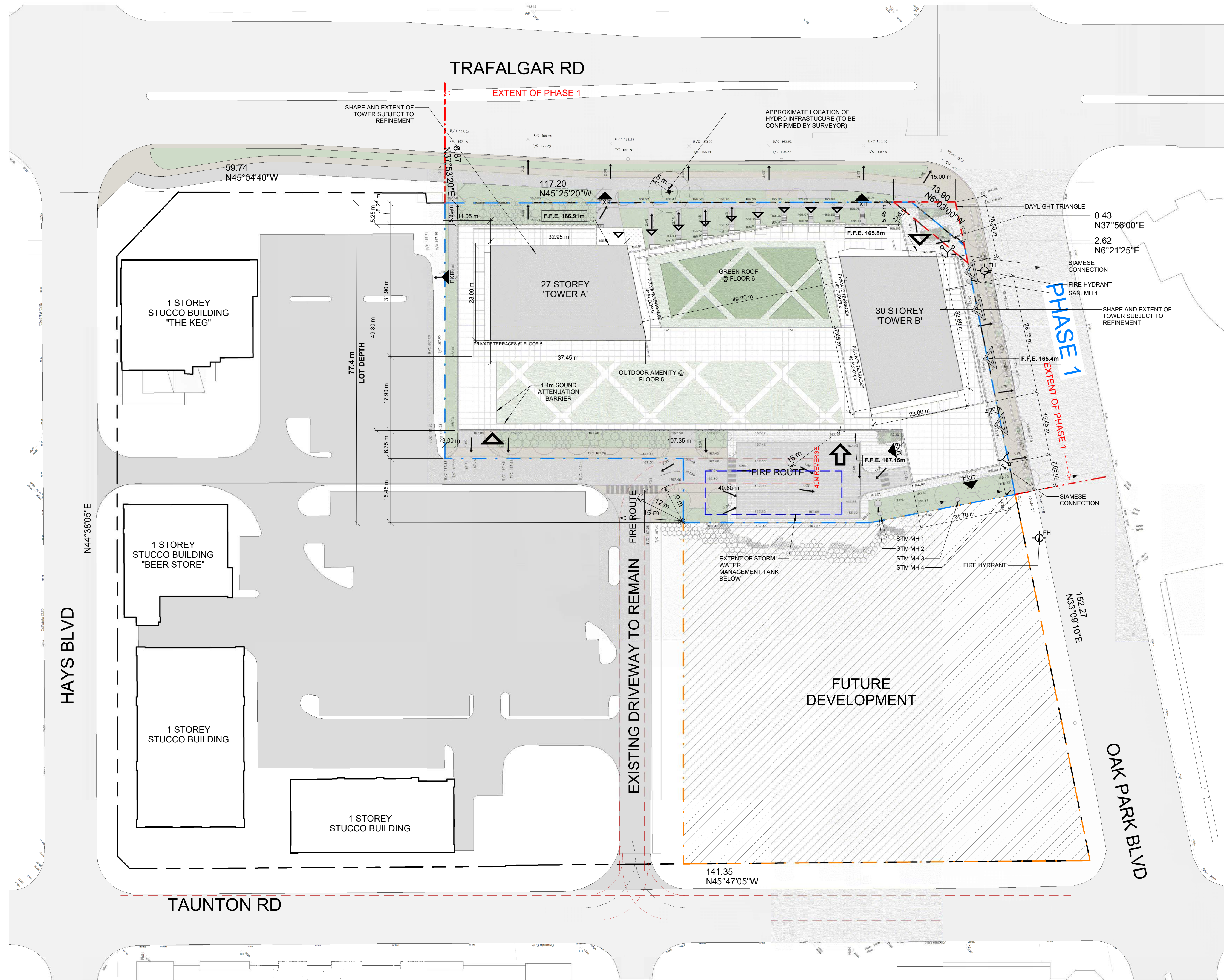
This drawing, as an instrument of service, is provided by and is the property of Turner Fleischer Architects Inc. The contractor must verify and accept responsibility for all dimensions and conditions on site and must notify Turner Fleischer Architects Inc. of any variations from the supplied information. This drawing is not to be scaled. The architect is not responsible for the accuracy of survey, structural, mechanical, electrical, etc. information shown on this drawing. Refer to the appropriate codes and requirements of applicable health and safety jurisdiction. The contractor must conform to all applicable codes and requirements of applicable health and safety jurisdiction. The contractor must assume full responsibility and bear costs for any corrections or damages resulting from his work.

## LEGEND

- - - - - FUTURE DEVELOPMENT
- - - - - PHASE 1

## LEGEND

- PRIMARY RESIDENTIAL ENTRANCE
- SECONDARY RESIDENTIAL ENTRANCE
- RETAIL ENTRANCE
- EXIT
- FIRE HYDRANT
- SIAMESE CONNECTION
- CONVEX MIRROR
- TRANSFORMER WITH CLEARANCES
- FIRE ROUTE SIGN
- 0.000.00 SPOT ELEVATION
- GAS/HYDRO METER



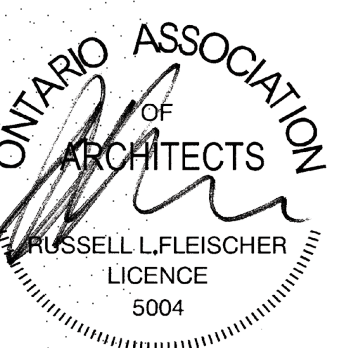
#	DATE	DESCRIPTION	BY
3	2022-03-07	ISSUED FOR SITE PLAN APPROVAL	DVI
2	2022-02-07	ISSUED FOR ZONING SUBMISSION #2	DVI
1	2021-04-20	ISSUED FOR ZONING SUBMISSION #1	DVI



PROJECT  
**OAKVILLE NORTH**  
Trafalgar Rd + Oak Park Blvd

DRAWING  
**CONCEPT PLAN / SITE PLAN / ROOF PLAN**

PROJECT NO.  
20.042SPA  
PROJECT DATE  
2021-04-20  
DRAWN BY  
DVI  
CHECKED BY  
RMH  
SCALE  
1:500



DRAWING NO.  
**SPA005**