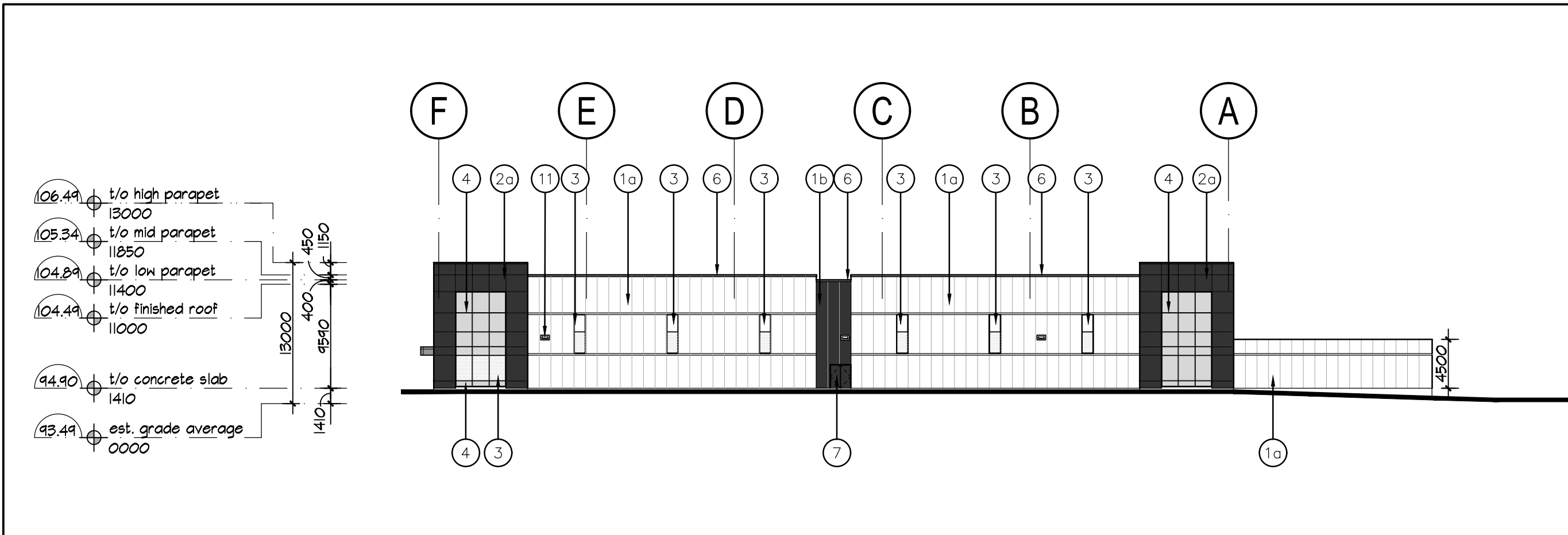
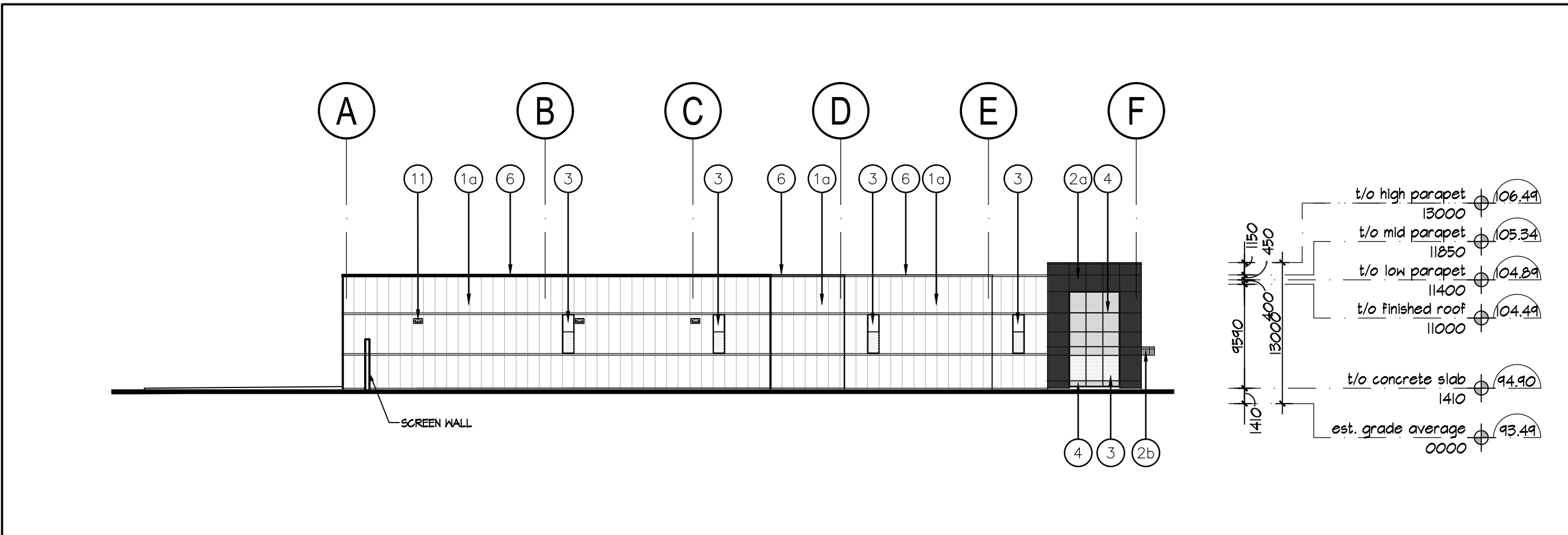


- 1 INSULATED METAL PANELS BY KINGSPAN. TEXTURE TO BE FUTURE SELECTION BY ARCHITECT.  
1a - COLOUR TO BE WHITE.  
1b - COLOUR TO BE CHARCOAL GREY.
- 2 ALUMINUM COMPOSITE PANELS BY ALPOLIC OR APPROVED EQUAL.  
2a - COLOUR TO BE CHARCOAL GREY.  
2b - COLOUR TO BE GREY.
- 3 THERMAL GLAZING IN ALUMINUM CURTAIN WALL FRAMES, C/W BIRD FRIENDLY VISUAL MARKERS.
- 4 SPANDREL GLAZING IN ALUMINUM CURTAIN WALL FRAMES.
- 5 ALUMINUM AND TEMPERED THERMAL GLASS DOOR(S) IN ALUMINUM CURTAIN WALL DOOR FRAMING SYSTEM. COLOUR TO MATCH WINDOW GLAZING SYSTEM.
- 6 PRE-FINISHED METAL COPING BY VICWEST OR APPROVED EQUAL. COLOUR TO MATCH MATERIAL BELOW.
- 7 INSULATED HOLLOW METAL DOOR IN PRESSED STEEL FRAMES. COLOUR TO MATCH ADJACENT MATERIAL.
- 8 INSULATED HOLLOW METAL SECTIONAL OVERHEAD DOOR C/W 305mm x 200mm (WxH) LEXAN INSERT. 4270mm x 4880mm (WxH). COLOUR TO BE FUTURE SELECTION.
- 9 INSULATED HOLLOW METAL SECTIONAL OVERHEAD DOOR C/W DOCK SEAL, DOCK LEVELLER, DOCK BUMPERS AND 305mm x 200mm (WxH) LEXAN INSERT. 3050mm (W) X 3355mm (H). COLOUR TO BE WHITE.
- 10 STEEL GRATE EXTERIOR STAIR. PRIMED & MARINE OIL BASE PAINTED GREY.
- 11 WALL MOUNTED LIGHTING. REFER TO ELECTRICAL DRAWINGS.

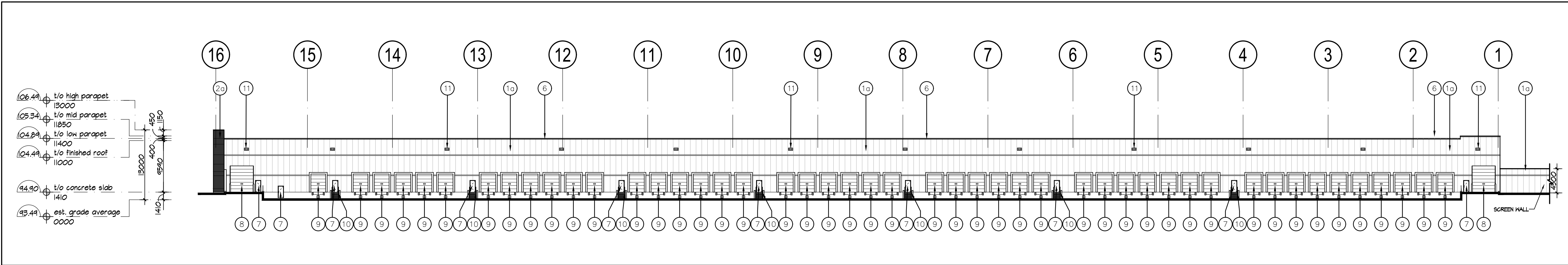
GLAZING TYPE	AREA (m2)
<input type="checkbox"/> CLEAR GLAZING	25.66
<input type="checkbox"/> DOT PATTERN ON CLEAR GLAZING	179.66
<input type="checkbox"/> SPANDREL GLAZING	277.62
TOTAL	482.94 m2
DOT PATTERNED GLASS + SPANDREL GLASS = 457.28 m2 95% OF CONTIGUOUS GLASS PANEL AREA IS BIRD-FRIENDLY	



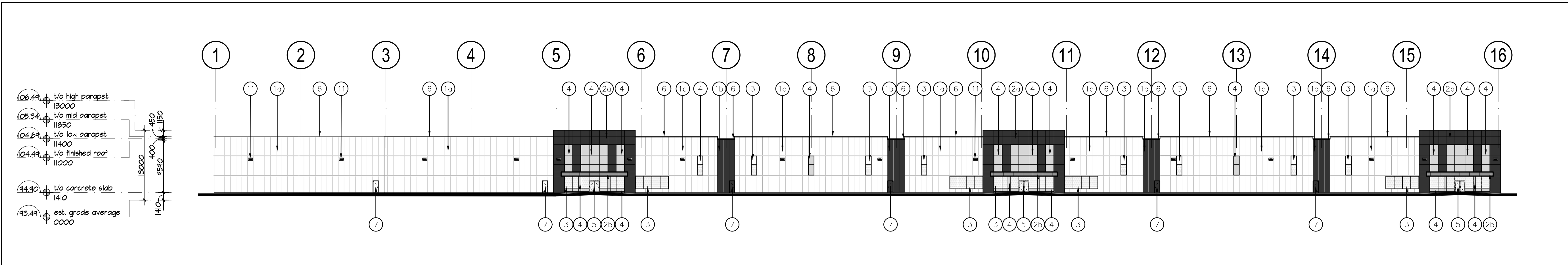
3 East Elevation  
A-3.0 Scale = 1:400



4 West Elevation  
A-3.0 Scale = 1:400



2 North Elevation  
A-3.0 Scale = 1:400



1 South Elevation  
A-3.0 Scale = 1:400

No.	ISSUED	DATE
1	ISSUED FOR REVIEW	OCT. 1, 2020
2	RE-ISSUED FOR SPA	MAR. 1 2021
3	RE-ISSUED FOR SPA	NOV. 25 2021
4	RE-ISSUED FOR SPA	JULY 6, 2022

No.	REVISION	DATE
-----	----------	------

BALDASSARRA  
Architects Inc.

30 Great Gulf Drive, Unit 20 | Concord ON | L4K 0K7  
T: 905.660.0722 | [www.baldassarra.ca](http://www.baldassarra.ca)



OWNERS INFORMATION:

560 Winston  
Churchill Blvd.

Oakville, Ontario

ELEVATIONS  
Building A

DATE: SEPT. 2020	DRAWN BY: LY	CHECKED: AS NOTED	SCALE: AS NOTED
PROJECT No. 18-51 A		DRAWING No. A-3.0	