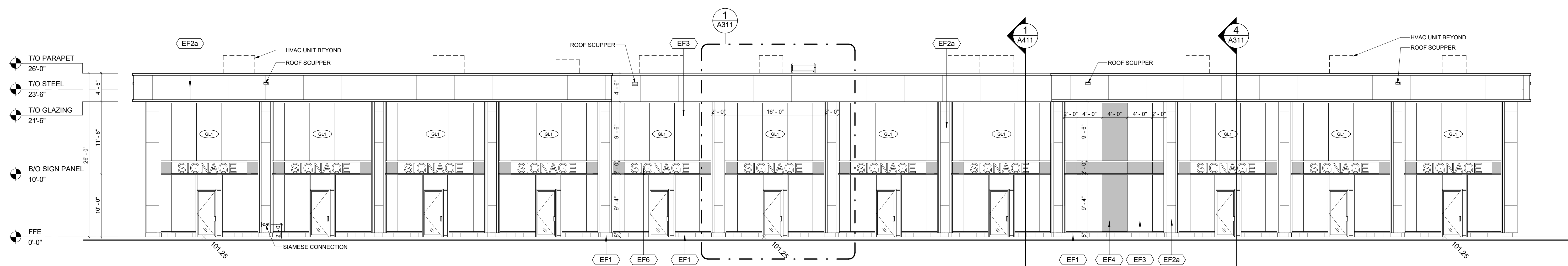
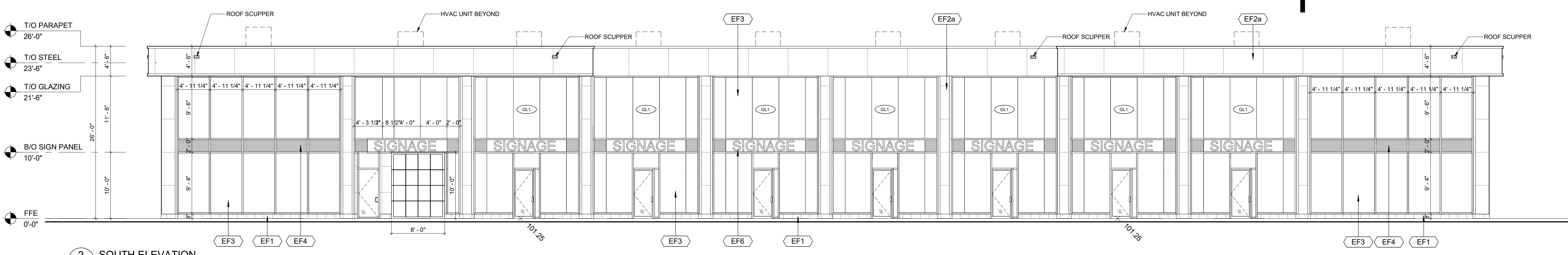


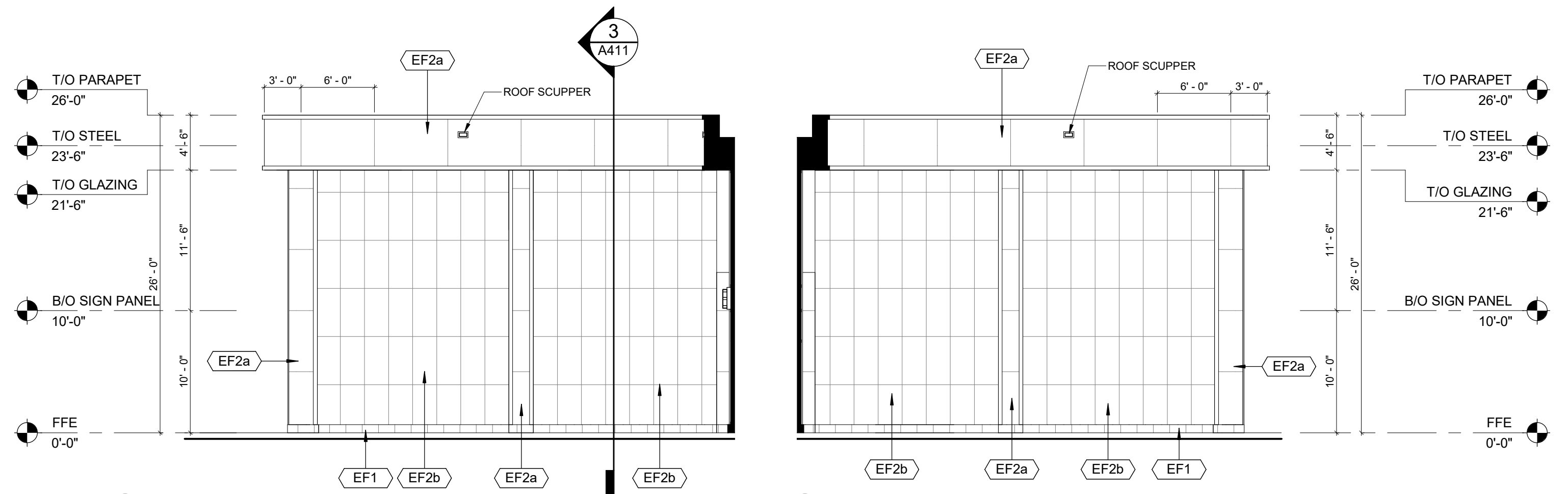
This drawing, as an instrument of service, is provided by and is the property of Turner Fleischer Architects Inc. The contractor must verify and accept responsibility for all dimensions and conditions on site and must notify Turner Fleischer Architects Inc. of any variations from the supplied information. This drawing is not to be scaled. The architect is not responsible for the accuracy of survey, structural, mechanical, electrical, etc. information shown on this drawing. Refer to the appropriate consultant drawings before proceeding with the work. Contractor must conform to all applicable codes and requirements of applicable building jurisdiction. The contractor working from drawings not specifically marked "For Contractor" must assume full responsibility and bear costs for any corrections or damages resulting from his work.



1 NORTH ELEVATION  
 A301  
 1/8" = 1'-0"

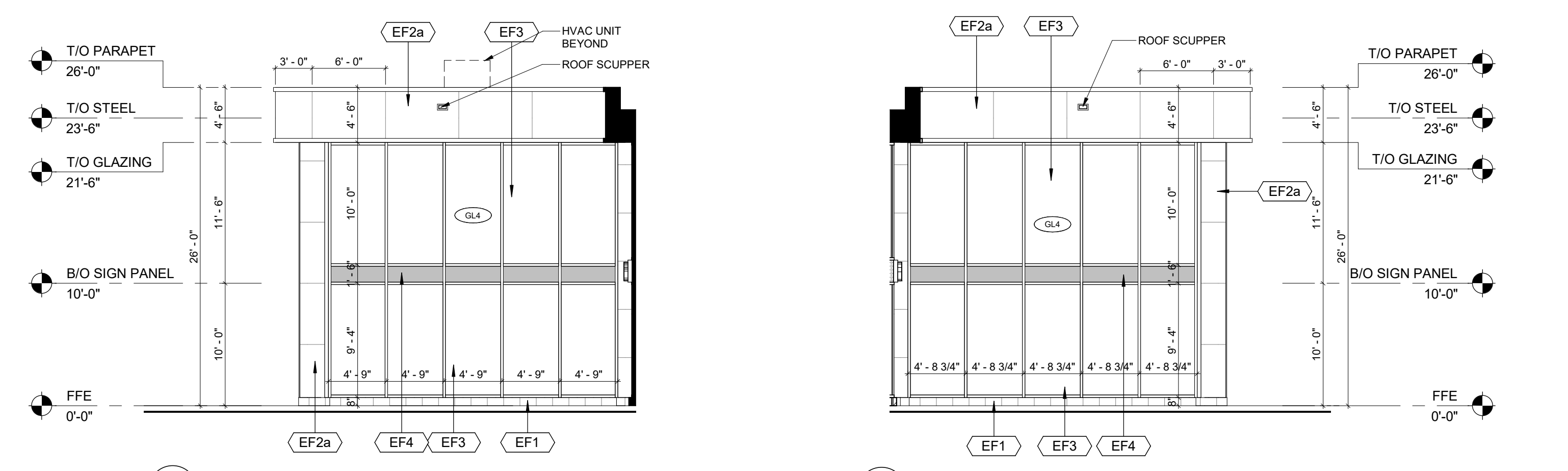


2 SOUTH ELEVATION  
 A301  
 1/8" = 1'-0"



5 Elevation 2 - a  
 A301  
 1/8" = 1'-0"

6 Elevation 3 - a  
 A301  
 1/8" = 1'-0"



8 Elevation 1 - a  
 A301  
 1/8" = 1'-0"

7 Elevation 4 - a  
 A301  
 1/8" = 1'-0"

EXTERIOR FINISH SCHEDULE	
EF1	<b>CONCRETE BLOCK:</b> PRODUCT: SHOULDICE ARCH BLOCK SIZE: 190 X 390 COLOUR: COLBY FINISH: TAPESTRY MORTAR: SEE MANUFACTURER'S STANDARD SPECIFICATIONS CONTROL JOINT AND CAULKING COLOURS TO MATCH MASONRY UNIT COLOUR.
EF2a	<b>ALUMINUM COMPOSITE PANELS:</b> PRODUCT: ALPOLIC SIZE: SEE ELEVATIONS C/W MATCHING TRIMS/FLASHING COLOUR: BRONZE CONTRACTOR TO PROVIDE COLOUR/FINISH SAMPLE FOR OWNER APPROVAL PRIOR TO ORDERING OF MATERIALS
EF2b	<b>ALUMINUM COMPOSITE PANELS:</b> PRODUCT: ALPOLIC SIZE: 12" X 24" C/W MATCHING TRIMS/FLASHING COLOUR: BRONZE CONTRACTOR TO PROVIDE COLOUR/FINISH SAMPLE FOR OWNER APPROVAL PRIOR TO ORDERING OF MATERIALS
EF3	<b>GLAZED DOORS &amp; WINDOWS:</b> CLEAR LOW E GLAZING IN COLOUR: BLACK ANODIZED THERMALLY BROKEN ALUMINUM FRAMES
EF4	<b>SPANDREL GLAZED DOORS &amp; WINDOWS:</b> BLACK ANODIZED ALUMINUM FRAMES CLEAR GLASS UNIT WITH CUSTOM COLOUR COATING ON INBOARD SURFACE OF OUTERLITE (TEMPERED GLASS TO BE USED AT DOORS AND SIDELIGHTS) COLOUR: BLACK
EF5	<b>ACM CORNICE:</b> PRODUCT: ALPOLIC COLOUR: BRONZE CONTRACTOR TO PROVIDE COLOUR/FINISH SAMPLE FOR OWNER APPROVAL PRIOR TO ORDERING OF MATERIALS PROFILE: REFER TO DETAILS, ACM TO BE BENT TO SUIT
EF6	<b>EXTERIOR SIGNAGE &amp; PANEL:</b> SIGNAGE TO BE PROVIDED BY AND INSTALLED BY TENANT. G.C. TO INSTALL 5/8" PLYWOOD BACKING FOR FUTURE MOUNTING OF SIGNAGE. SIGNAGE CONDUIT ROUGH-OUTS TO BE COORDINATED WITH TENANT.

#	DATE	DESCRIPTION	BY
6	2022-05-27	ISSUED FOR SPA SUBMISSION #1	YSK
5	2022-04-08	ISSUED FOR PERMIT	YSK
3	2022-01-24	ISSUED FOR SPA SUBMISSION	YSK
2	2022-01-20	ISSUED FOR COORDINATION	YSK
1	2022-01-05	ISSUED FOR REVIEW	YSK



PROJECT  
**PROPOSED INDUSTRIAL BUILDING**  
 530 SPERS ROAD, OAKVILLE, ON

DRAWING  
**ELEVATIONS 1**

PROJECT NO. 21-101SH	
PROJECT DATE 2021-12-10	
DRAWN BY YSK	
CHECKED BY GAH	
SCALE 1/8" = 1'-0"	REV 5004