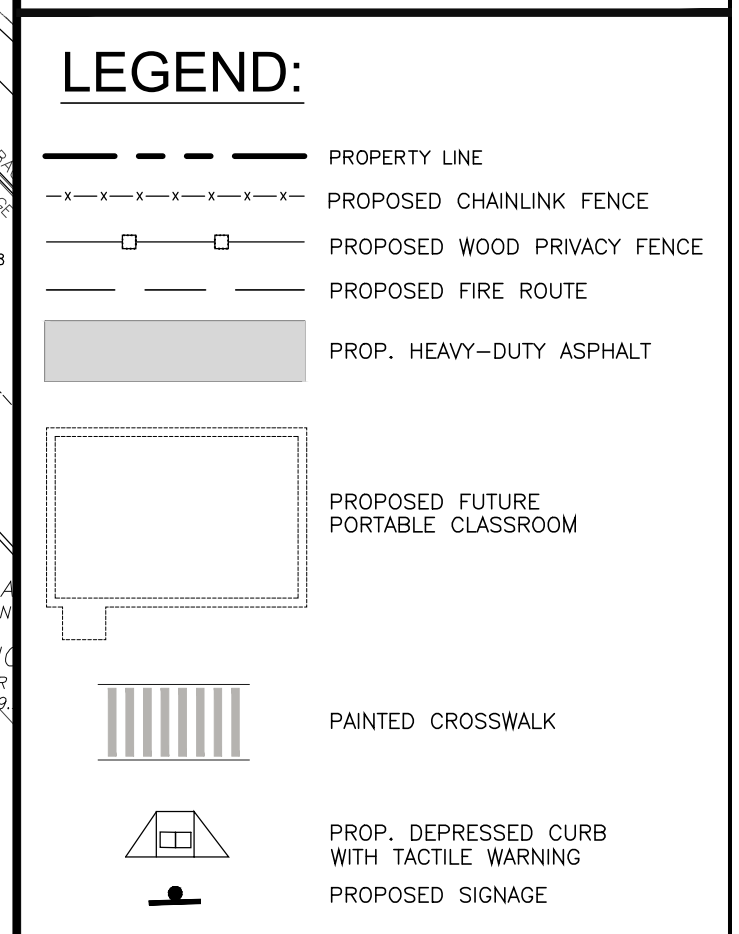


KEY PLAN N.T.S.

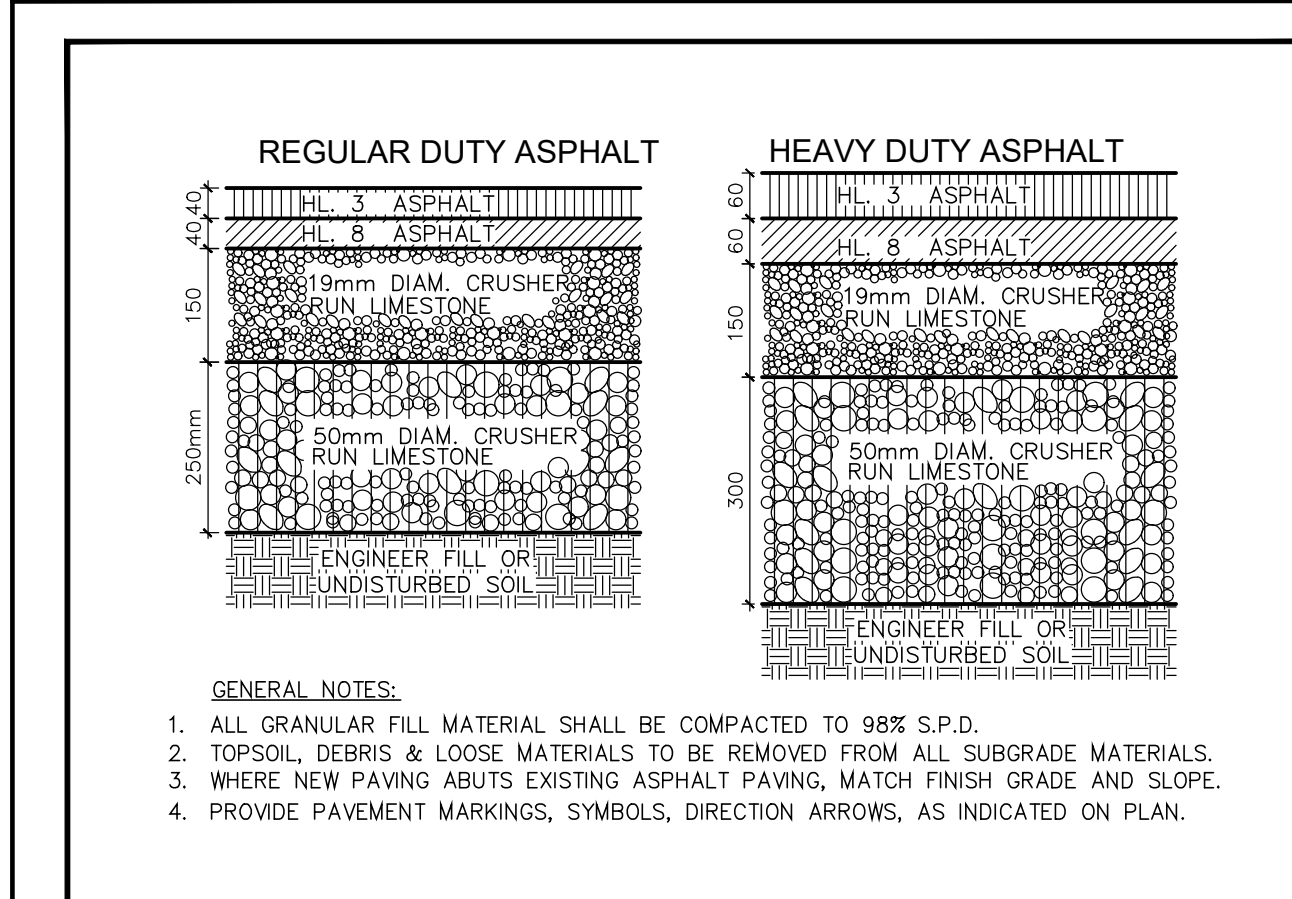
BASE INFORMATION TAKEN FROM DRAWINGS BY OTHERS. SA DOES NOT ASSUME ANY RESPONSIBILITY FOR ERRORS, OMISSIONS, OR ACCURACY OF THE INFORMATION. DRAWINGS SHALL ONLY BE USED FOR GRADING PURPOSES ONLY.

BASE INFORMATION TAKEN FROM LIBRANTIS MINTO AND SHELLEY DETLEFSEN AS-BUILT ENGINEERING DRAWINGS FROM 2015 AND 2016.

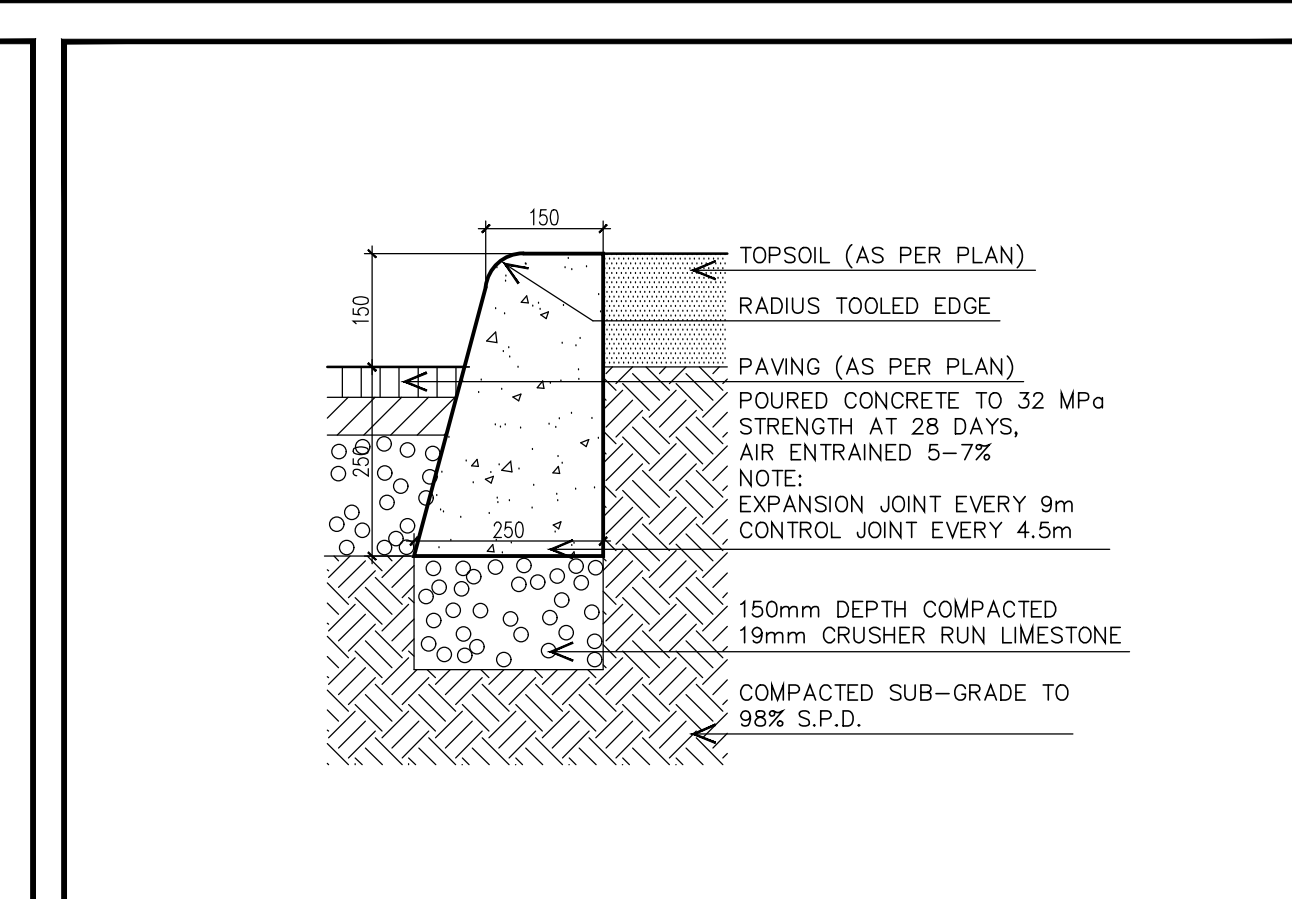


SITE STATISTICS

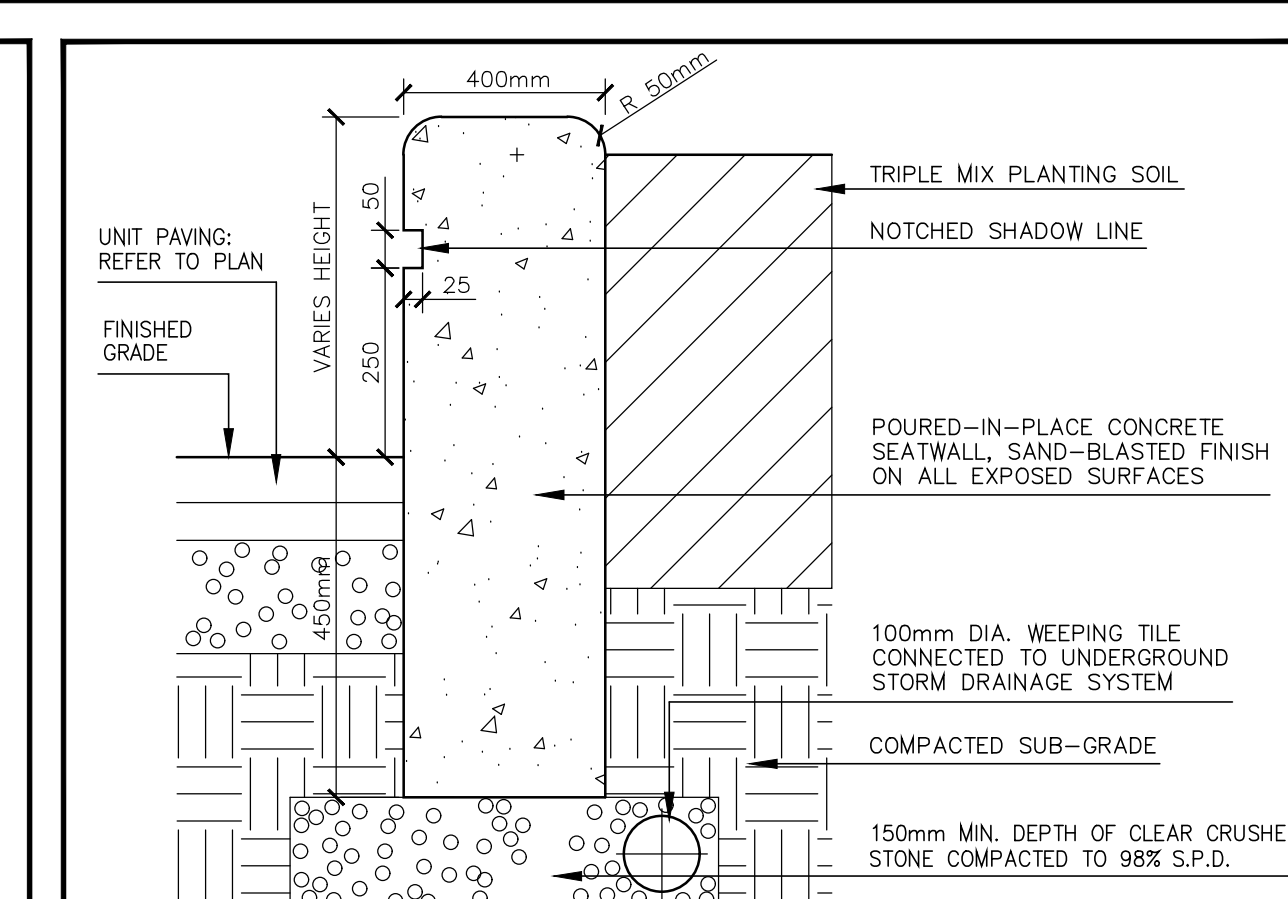
ZONING DATA	REQUIRED	PROVIDED
CURRENT 1 (INSTITUTIONAL) NORTH OAKVILLE ZONING BY-LAW 2009-189	-	-
MINIMUM FLOOR SPACE INDEX	0.30 FSI	Site area=23,774.99m ² GFA (School) = 6,000m ² GFA (Playground) = 1,330m ²
MAXIMUM FLOOR SPACE INDEX	2.00 FSI	FSI = 0.31
MINIMUM REQUIRED FRONT YARD (Neighbourhood)	3.0 m	3.64m
MINIMUM REQUIRED FRONT YARD (Neighbourhood)	6.0 m	6.0m
MINIMUM REQUIRED FLANKAGE (Threshing Mill Blvd.)	3.0 m	6.0m
MINIMUM REQUIRED FLANKAGE (Threshing Mill Blvd.)	6.0 m	6.0m
MINIMUM REQUIRED REAR YARD	7.5 m	106.08
MINIMUM REQUIRED INTERIOR SIDE YARD	1.5 m	22.50m
MINIMUM HEIGHT	11.00 m	11.25m
MAXIMUM HEIGHT	16.00 m	-
PARKING (MINIMUM)	1 PARKING SPACE PER CLASSROOM 30 CLASSROOMS = 18 PORTABLES X 1 SPACE = 48 SPACES MINIMUM	96 SPACES
PARKING (MAXIMUM)	2 PARKING SPACE PER CLASSROOM 30 CLASSROOMS = 18 PORTABLES X 2 SPACES = 96 SPACES MAXIMUM	96 SPACES
REQUIRED ACCESSIBLE PARKING	4 SPACES	4 SPACES
BIKEWAY SPACES	7% OF MIN. REQUIRED PARKING 7 SPACES	18 SPACES



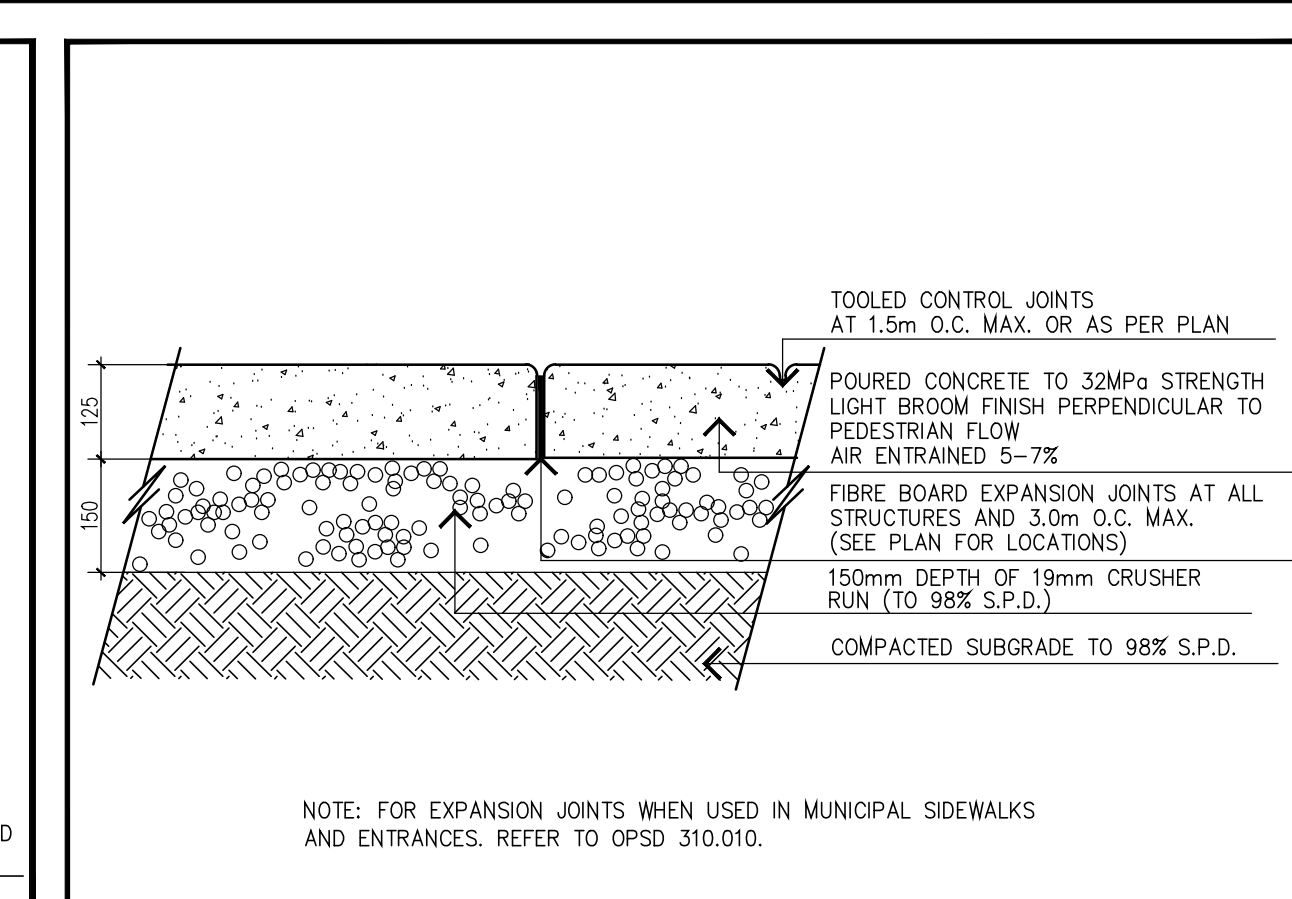
ASPHALT PAVING
SCALE: 1 : 10 m



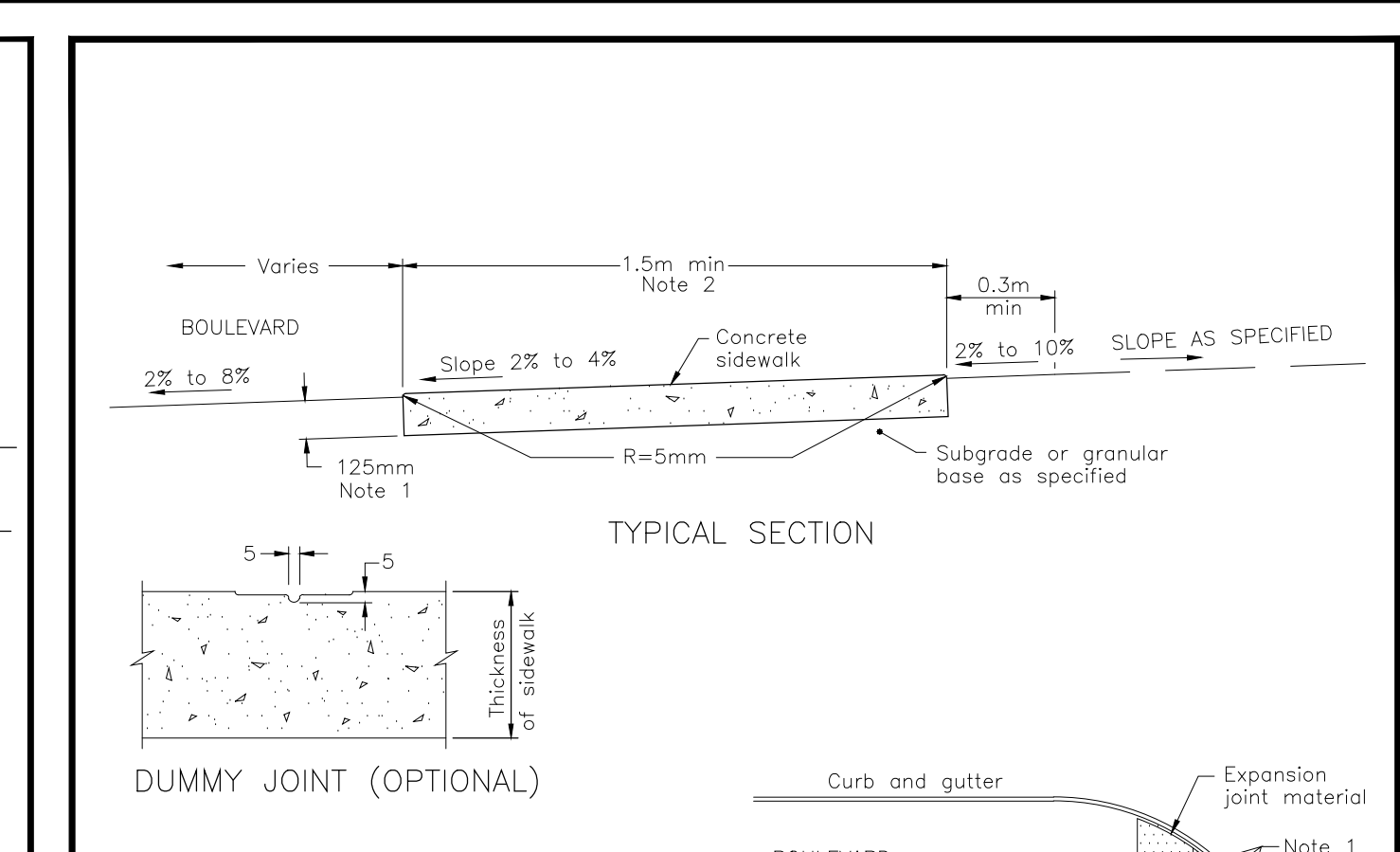
POURED CONCRETE CURB AT LANDSCAPE
SCALE: 1 : 10 m



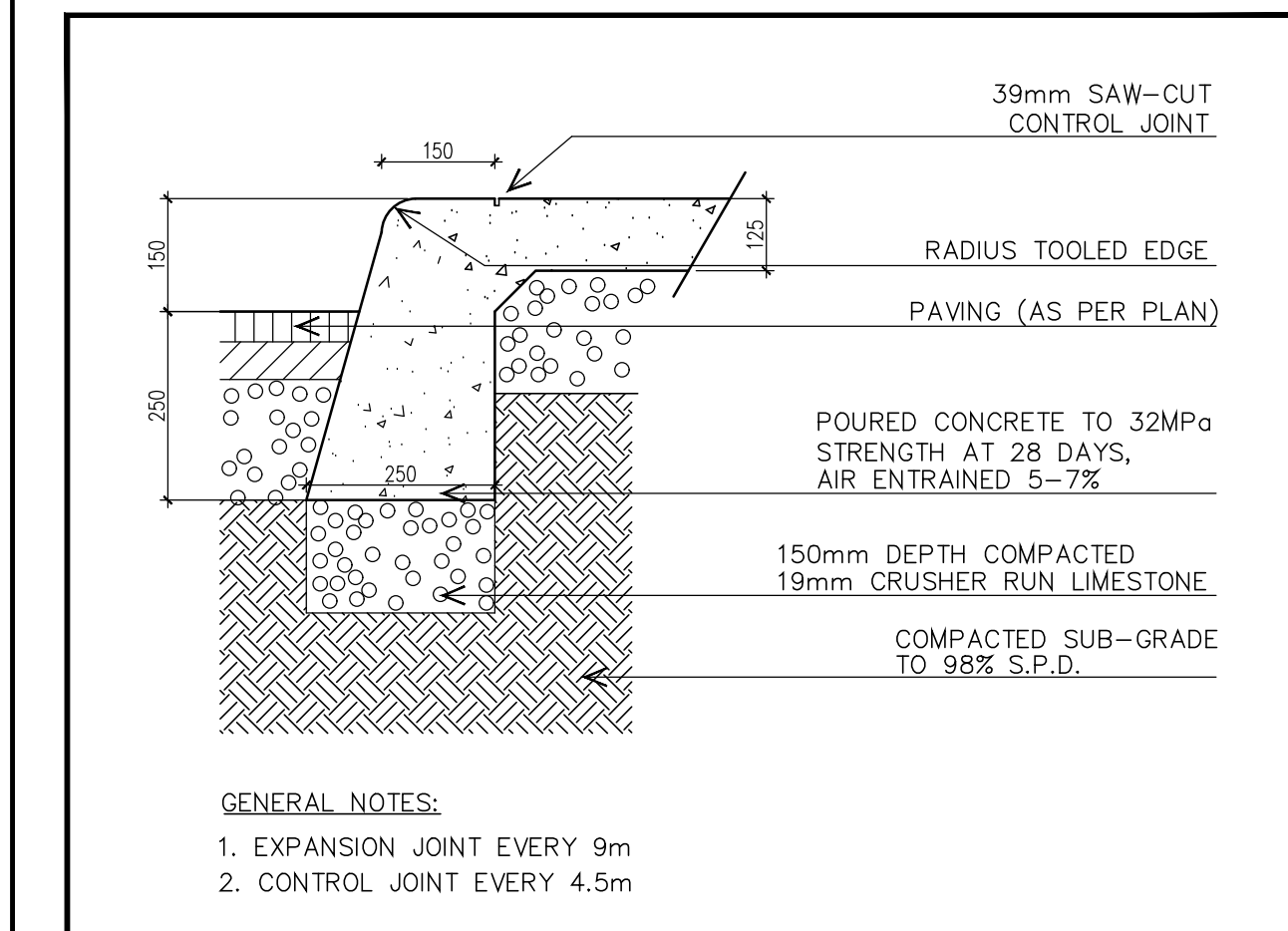
POURED CONCRETE SEATWALL
SCALE: 1 : 10 m



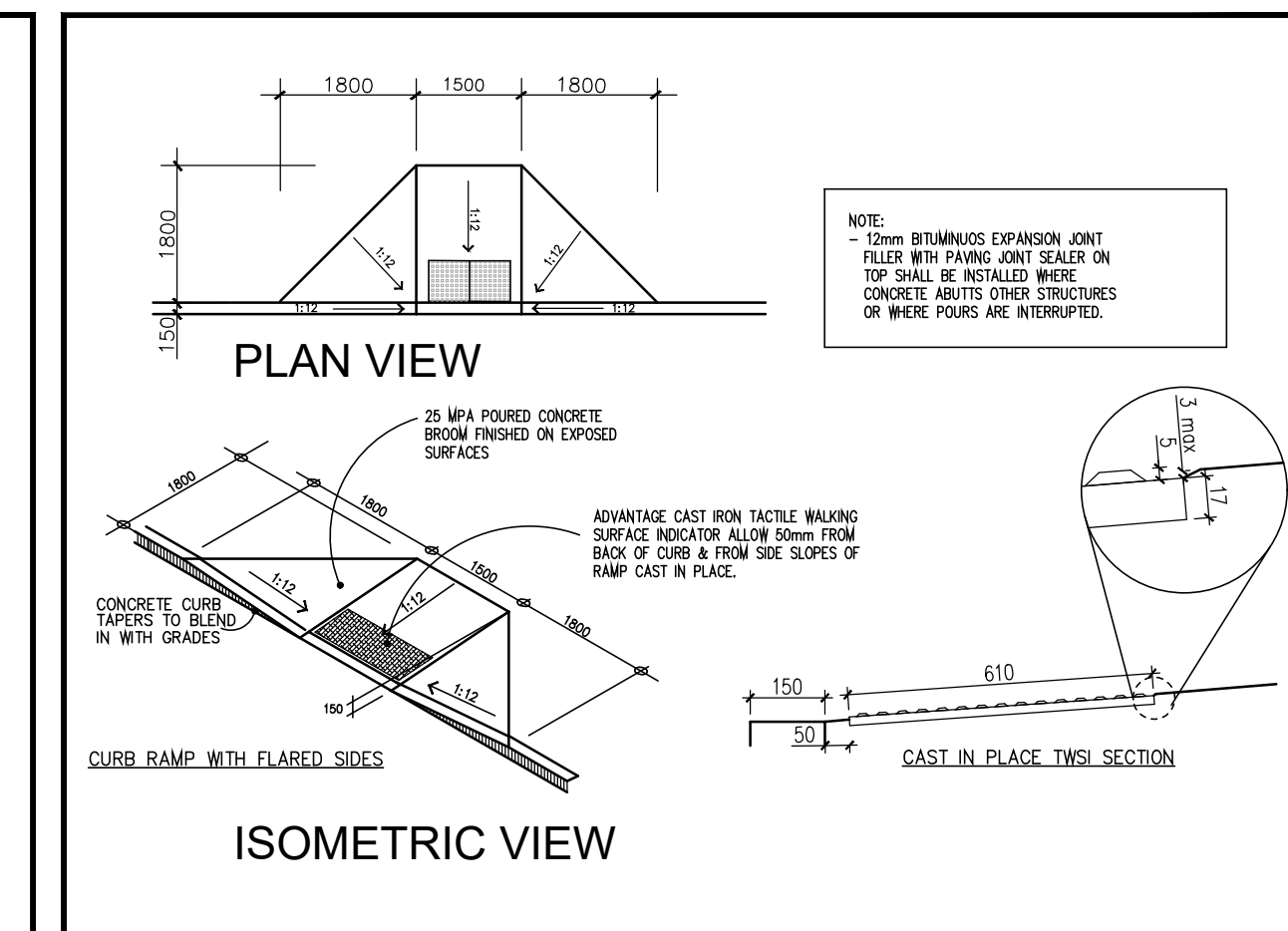
POURED CONCRETE PAVING
SCALE: 1 : 10 m



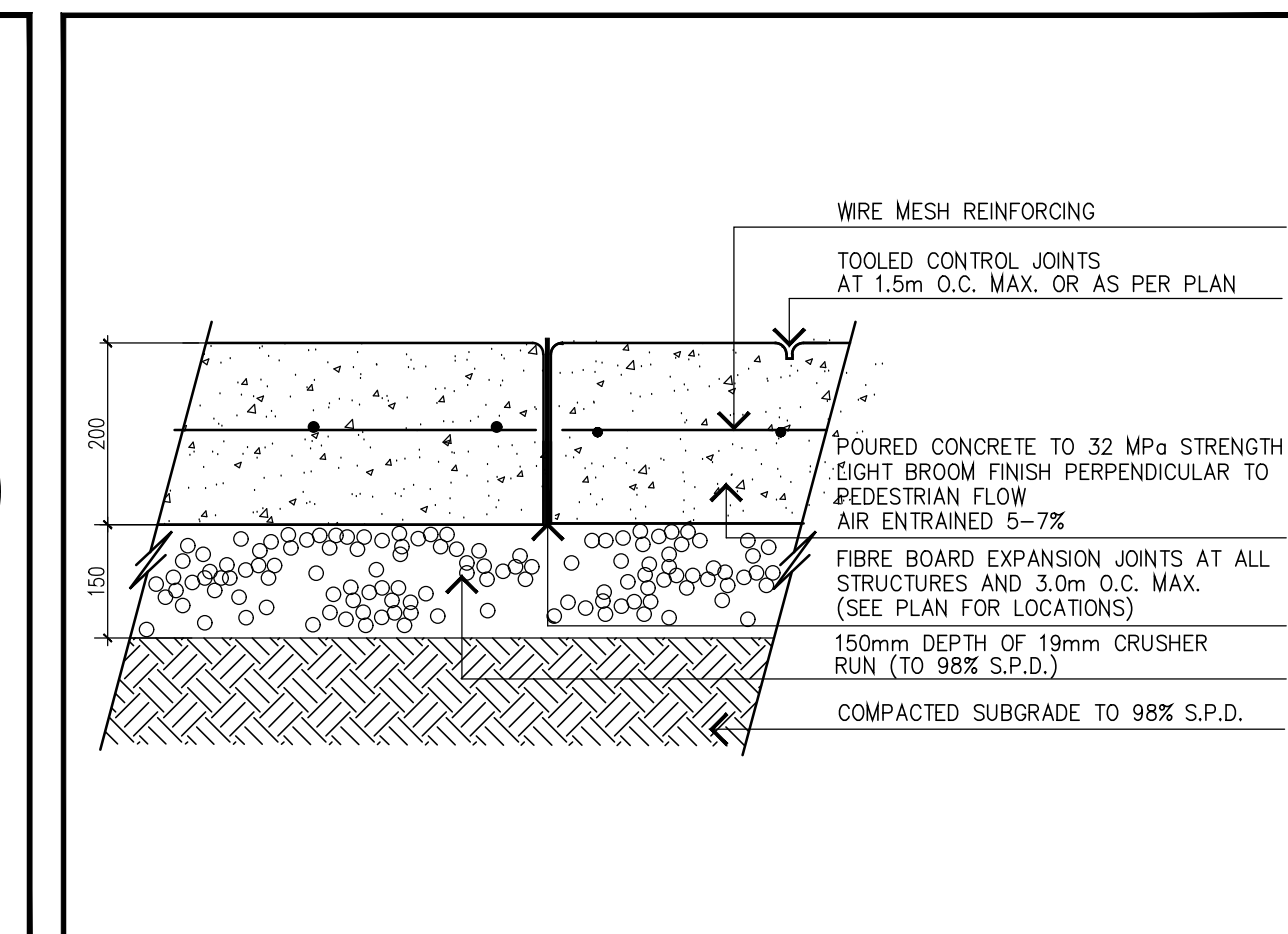
CONCRETE SIDEWALK
SCALE: 1 : 10 m



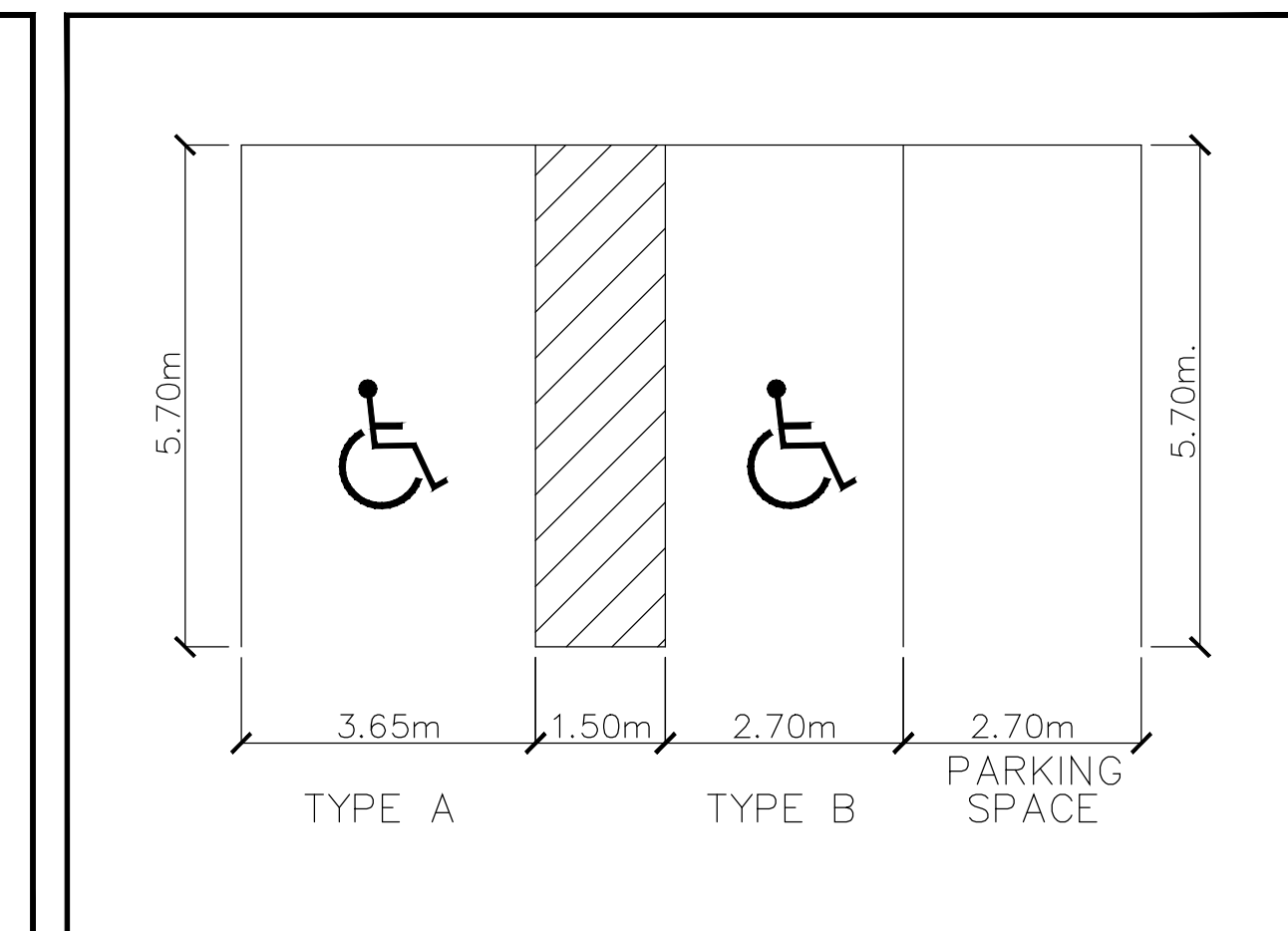
POURED CONCRETE CURB FACEWALK
SCALE: 1 : 10 m



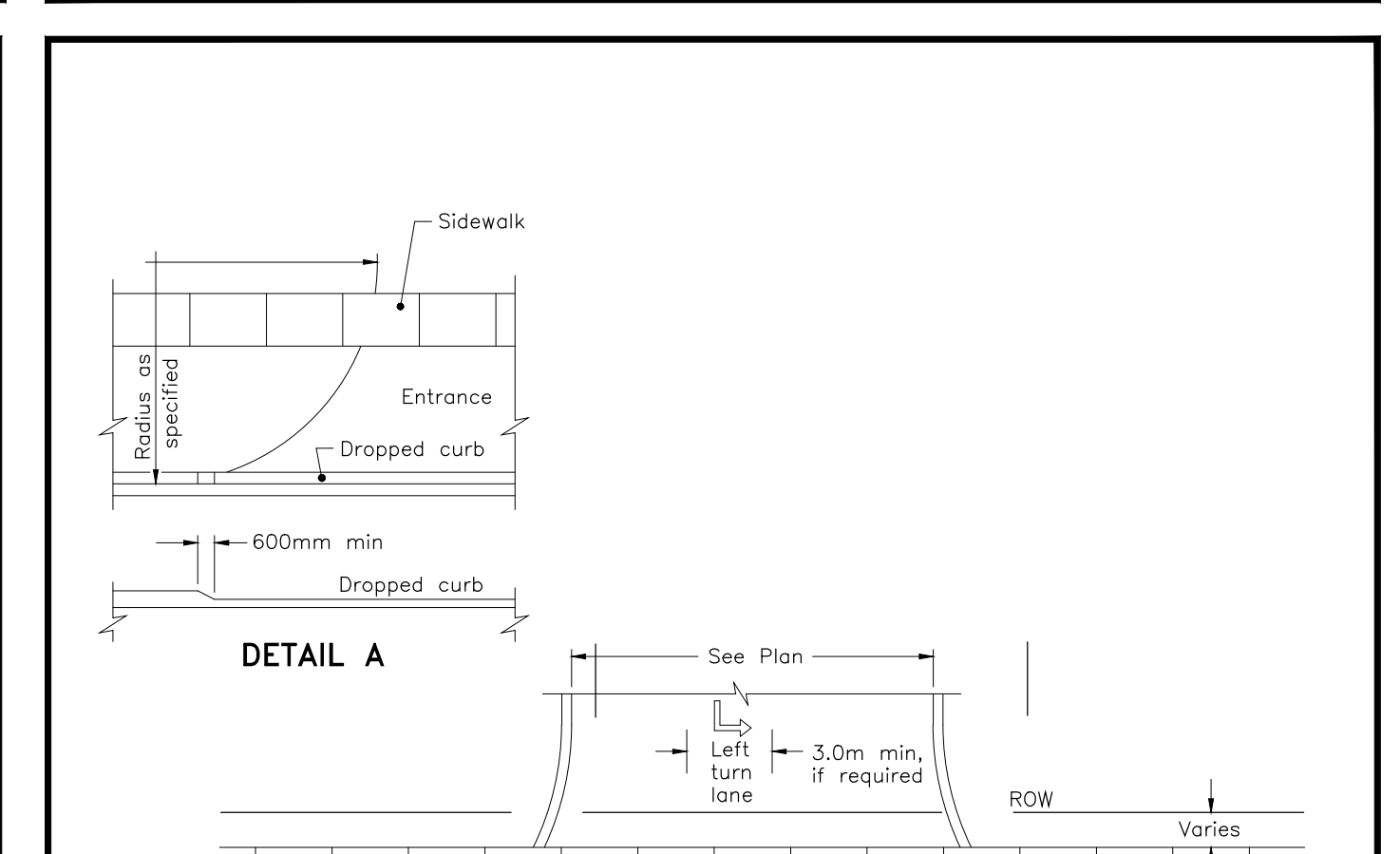
DEPRESSED CURB WITH TACTILE WARNING SURFACE
SCALE: 1 : 10 m



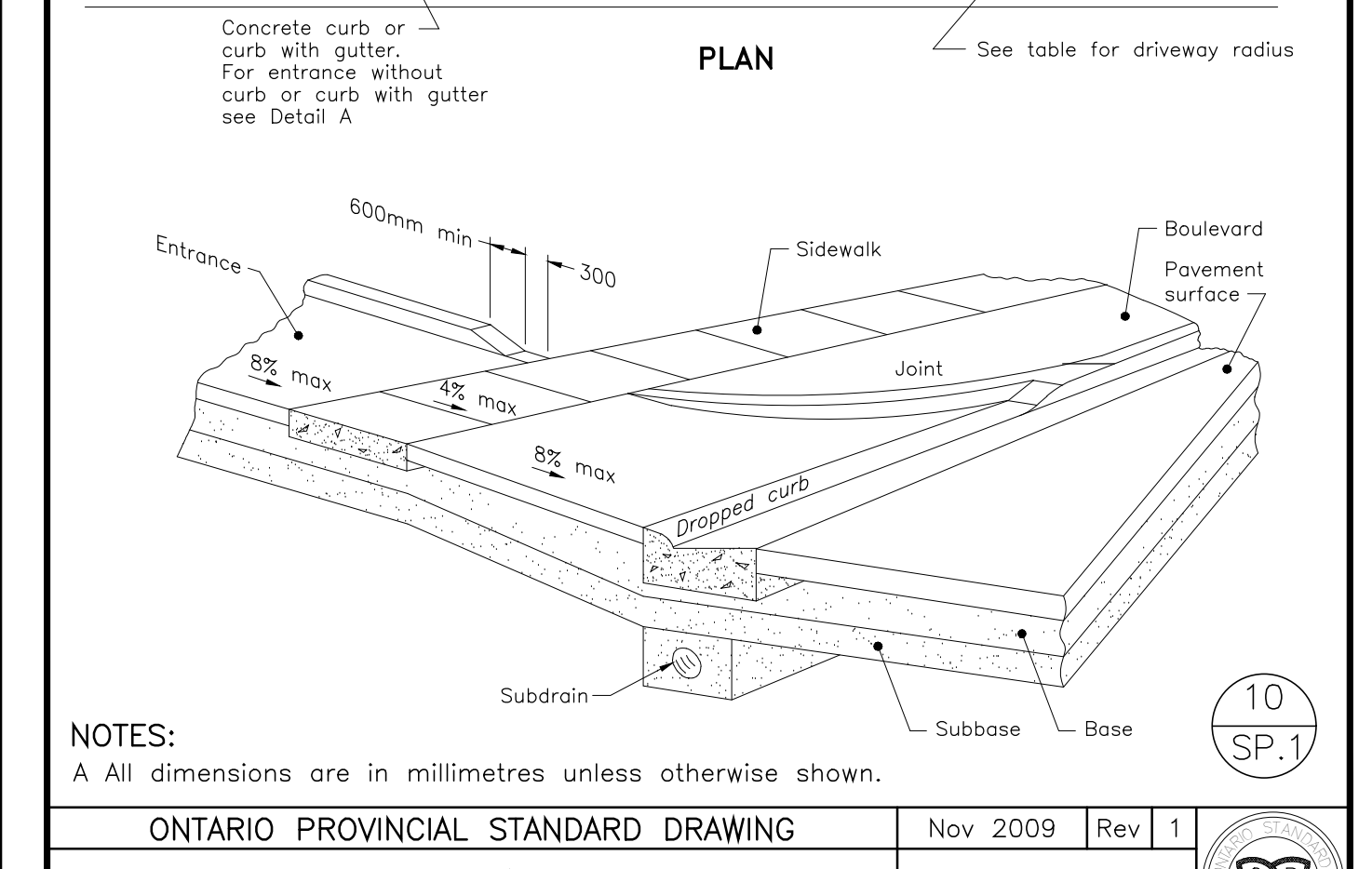
HEAVY-DUTY POURED CONCRETE PAVING
SCALE: 1 : 10 m



ACCESSIBLE PARKING SPACES
SCALE: N T S



DETAIL A & B
SCALE: 1 : 10 m



CONCRETE SIDEWALK
SCALE: 1 : 10 m

DATE DESCRIPTION CHECKED BY

DATE	DESCRIPTION	CHECKED BY
APR 19 2022	ISSUED FOR 2ND SITE PLAN APPROVAL	4 JK
JUL 27 2021	ISSUED FOR SITE PLAN APPROVAL	3 JK
JUL 20 2021	ISSUED TO URBANTECH	2 JK
JAN 13 2021	ISSUED FOR PRE-CONSULTATION	1 NH

REVISIONS

NOTE: Contractor to check and verify all dimensions and conditions on the project, and to immediately report any discrepancies to the landscape architect before proceeding with the work.

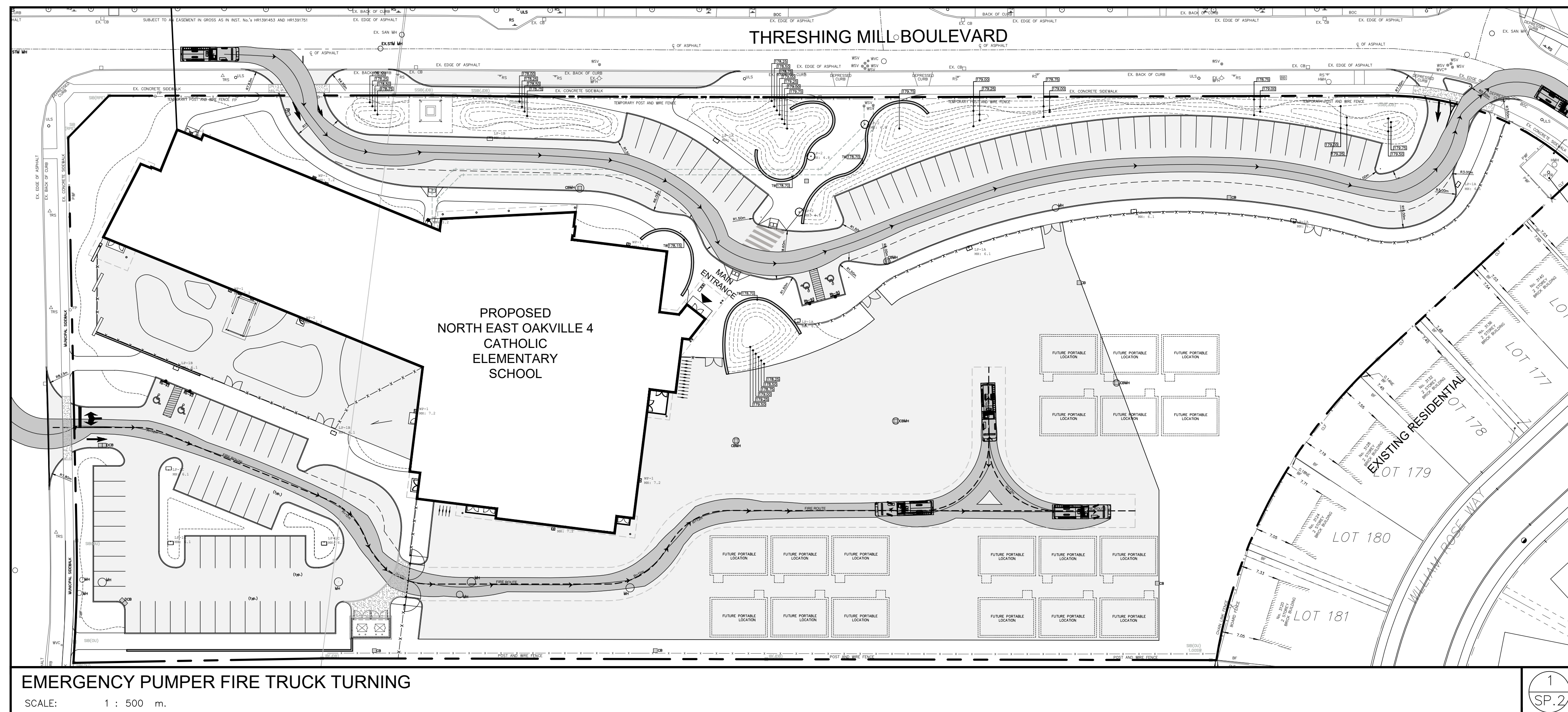
HALTON CATHOLIC DISTRICT SCHOOL BOARD

Strategy 4
Development of
Urban Transformation
Urban Engineering
2620 Bristol Circle, Suite 100
Oakville, ON L6M 6Z7
Tel: (905) 829-2544

Project Name: **NE OAKVILLE #4 CATHOLIC ELEMENTARY SCHOOL**
THRESHING MILL BLVD, OAKVILLE, ONTARIO

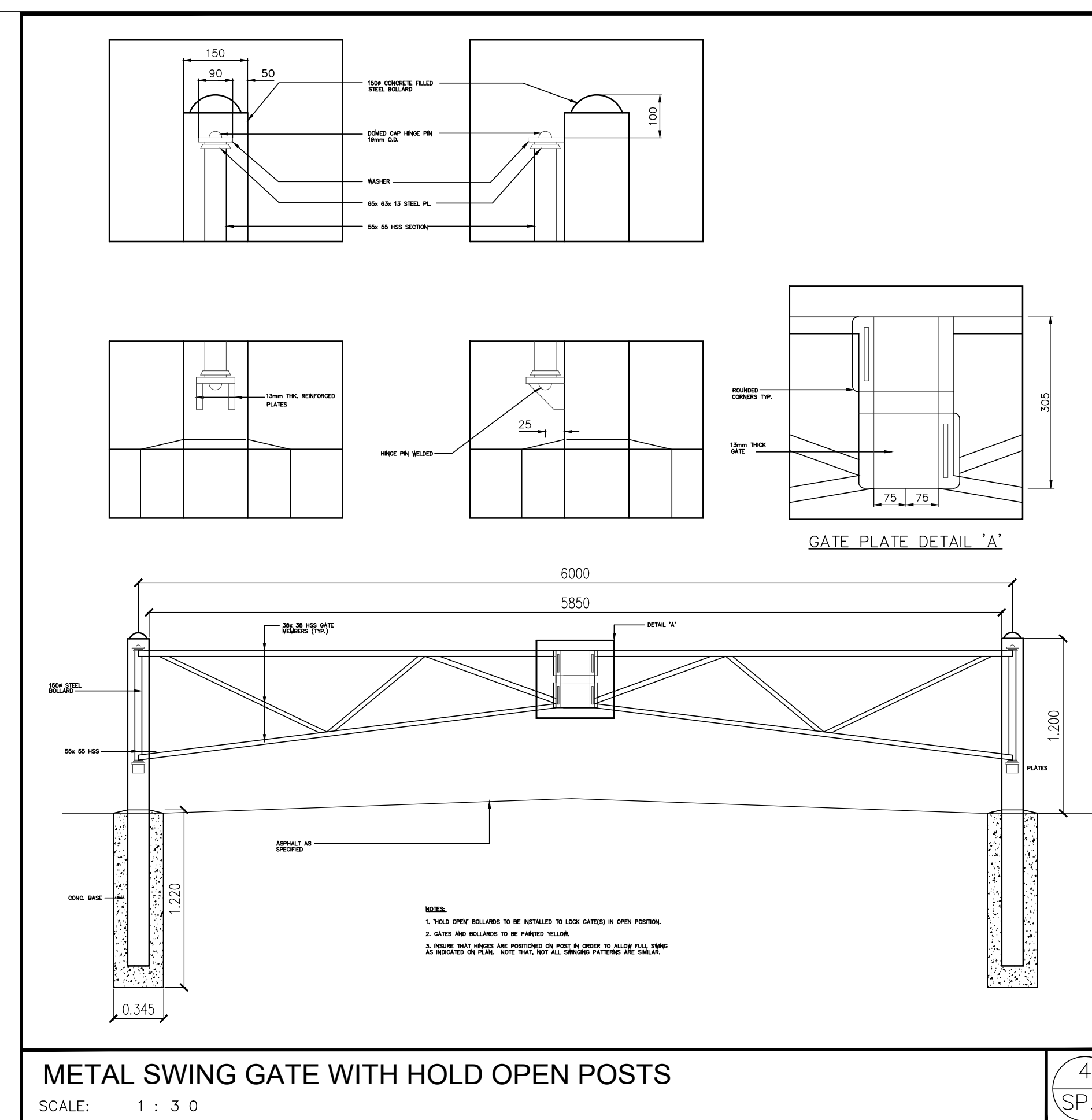
Sheet Description: **SITE PLAN AND DETAILS**
SP.131.001/03

Date: **JAN 2021** Issued: **APRIL 2022**
Job No.: **S4 2751** Drawn By: **ML/RO**
Scale: **1:300** Checked By: **DT**
SHEET No.: **SP.1** File No.: **2751SP-220426.DWG**



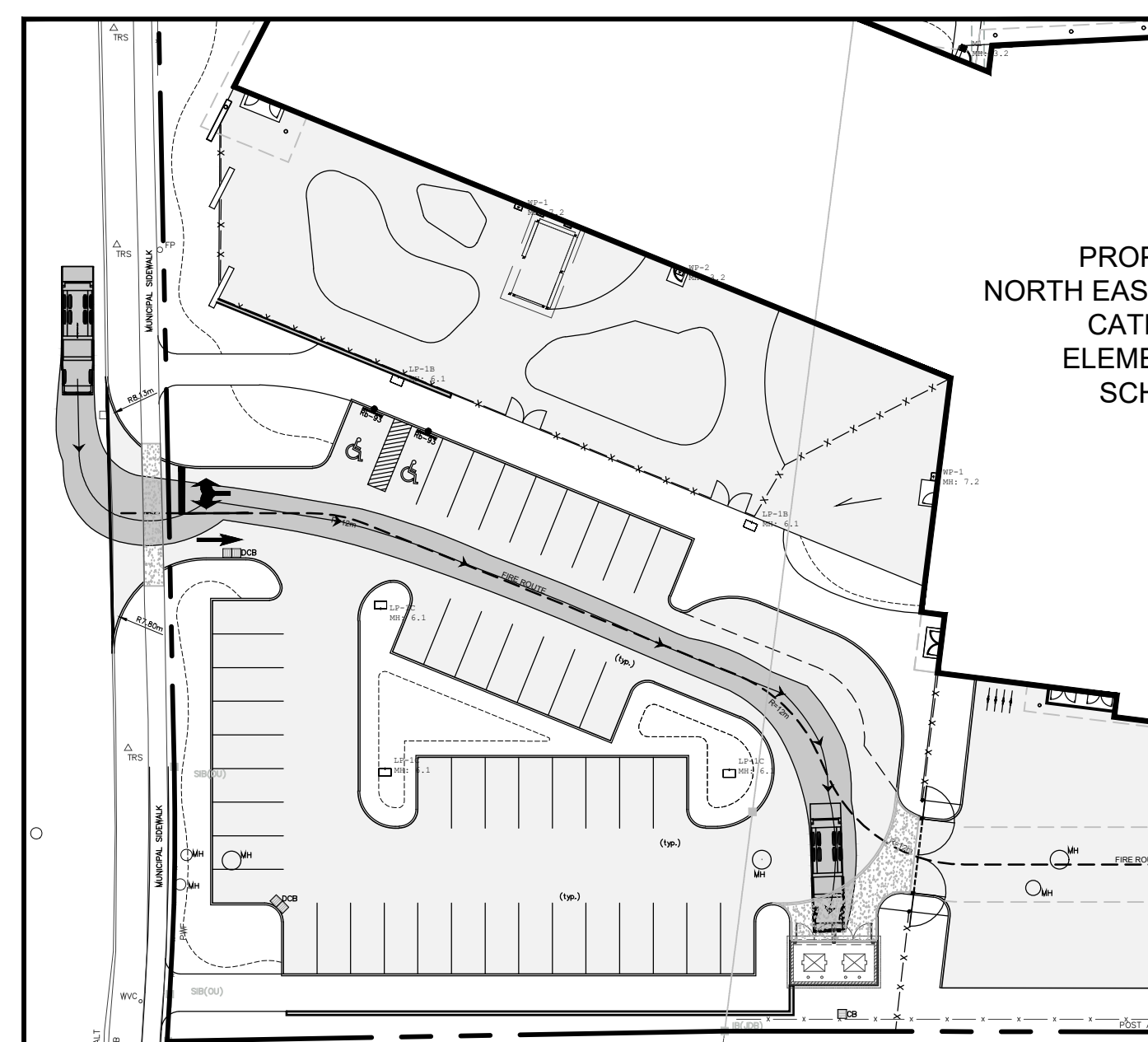
EMERGENCY PUMPER FIRE TRUCK TURNING
SCALE: 1 : 500 m.

1
SP.2



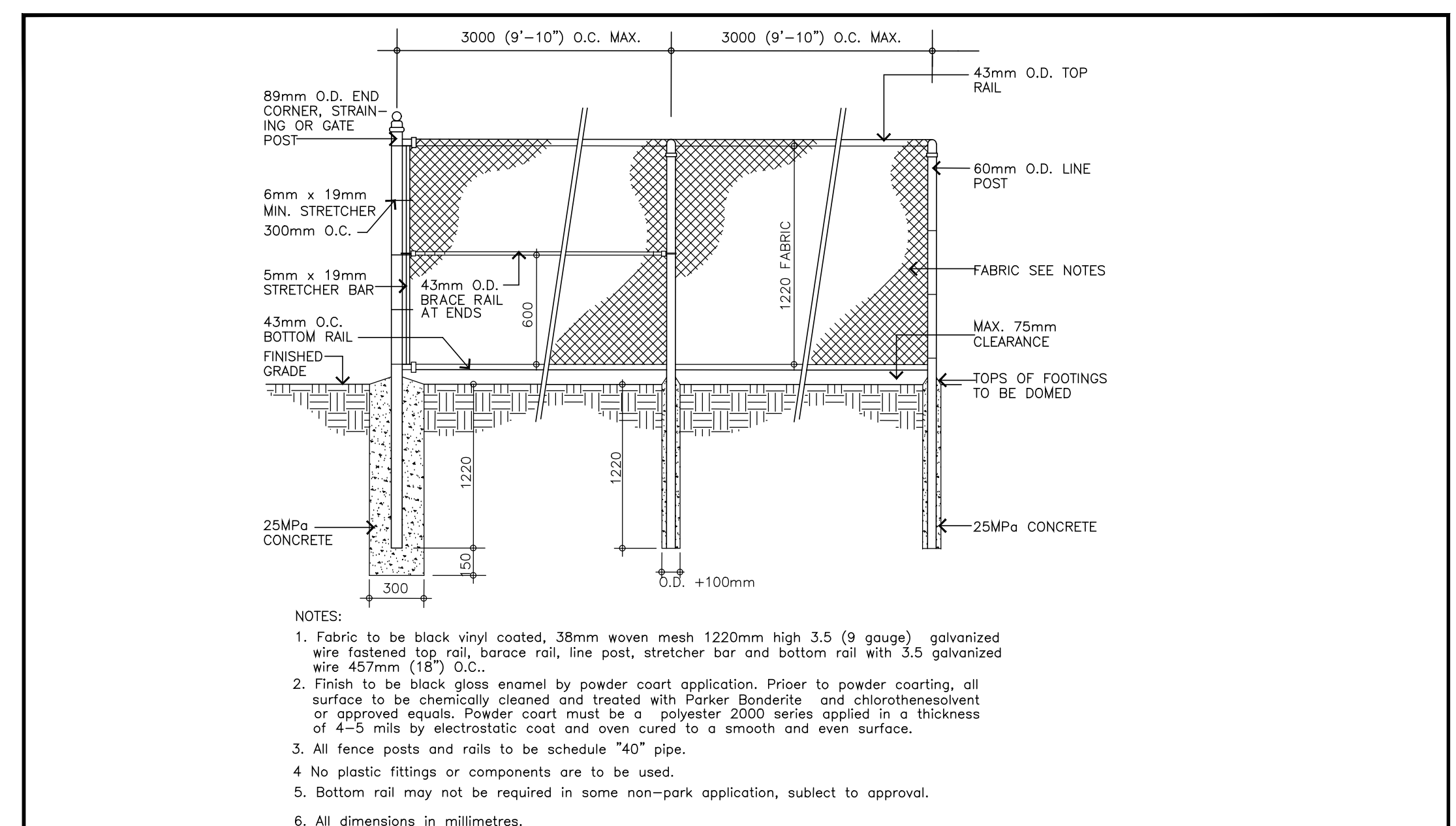
METAL SWING GATE WITH HOLD OPEN POSTS
SCALE: 1 : 30

4
SP.2



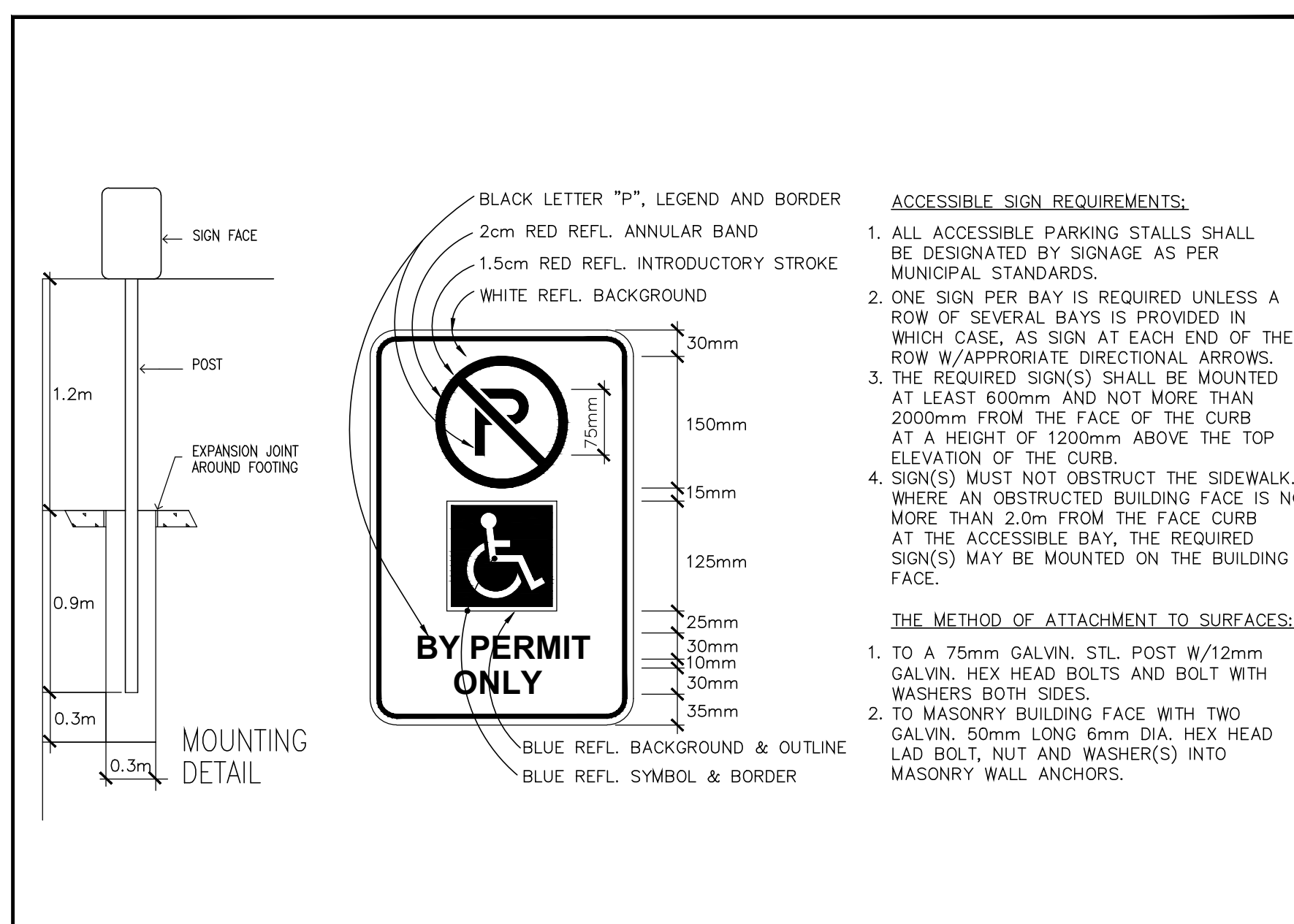
GARBAGE TRUCK AND LOADING SPACE TURNING
SCALE: 1 : 500 m.

2
SP.2



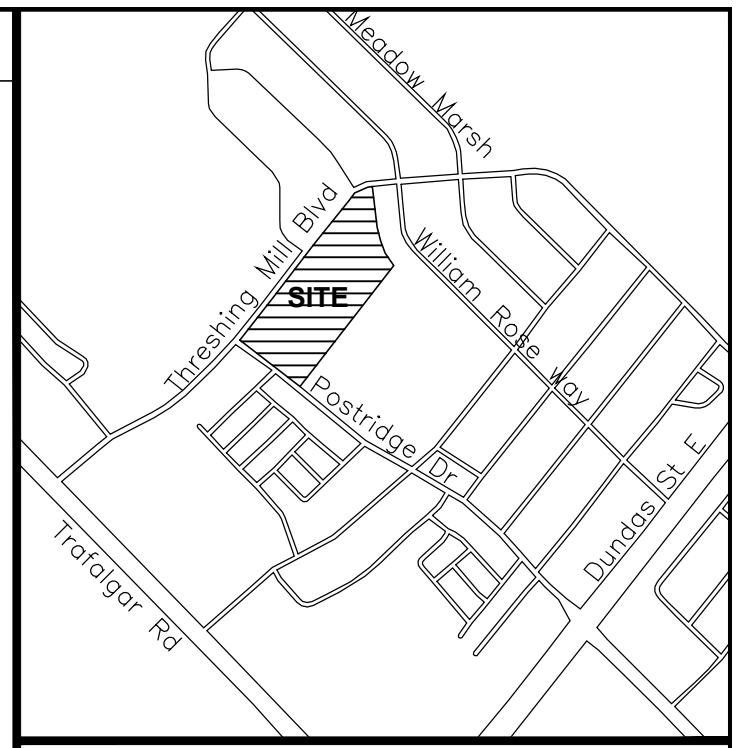
1.2m HT. BLACK VINYL CHAIN LINK FENCE
SCALE: N.T.S.

3
SP.2



ACCESSIBLE PARKING SIGNAGE
SCALE: N.T.S.

5
SP.2



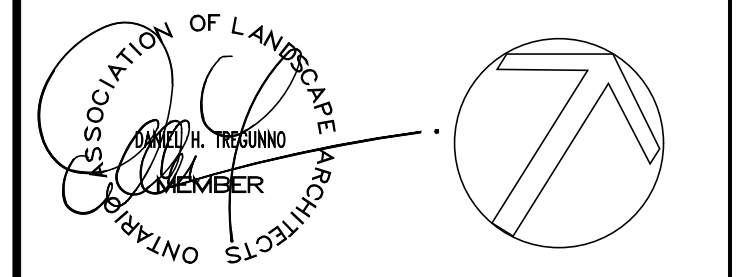
KEY PLAN N.T.S.

BASE INFORMATION TAKEN FROM DRAWINGS BY OTHERS. SA DOES NOT ASSUME ANY RESPONSIBILITY FOR ERRORS, OMISSIONS, OR ACCURACY OF THE INFORMATION. DRAWINGS SHALL ONLY BE USED FOR GUIDELINE PURPOSES ONLY.

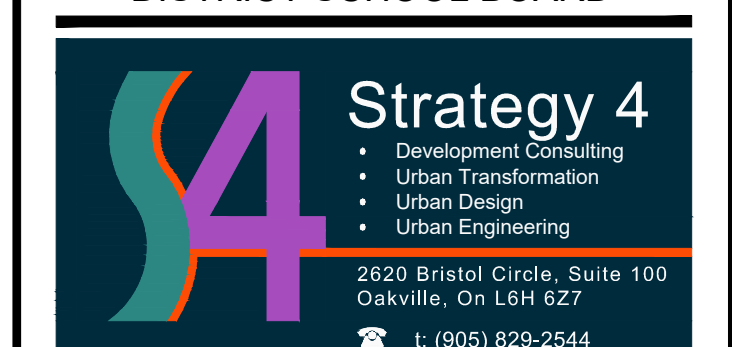
DATE	DESCRIPTION	CHECKED BY
APR. 19 2022	ISSUED FOR I.D.O. SITE PLAN APPLICATION CIRCULATION	J.K.
JUL. 27 2021	ISSUED FOR SITE PLAN APPROVAL	J.K.
JUL. 20 2021	ISSUED TO URBANTECH	J.K.

DATE DESCRIPTION CHECKED BY
REVISIONS

NOTE: Contractor is to check and verify all dimensions and conditions on the project, and is immediately report any discrepancies to the landscape architect before proceeding with the work.



HALTON CATHOLIC DISTRICT SCHOOL BOARD



Project Name:
NE OAKVILLE #4 CATHOLIC ELEMENTARY SCHOOL
THRESHING MILL BLVD, OAKVILLE, ONTARIO
Sheet Description:
DETAILS
SP.1311.001/03
Date: Issued:
JAN 2021 APRIL 2022
Job No.: Drawn By:
S4 2751 RO
Scale: Checked By:
AS NOTED DT
SHEET No.: File No.:
SP.2 2751SP2-220426 DWG